

Converting Colors

RGB(255, 192, 198)

Have a look what the booklet for
RGB(255, 192, 198) contains.

RGB(255, 192, 198)	3
<i>Conversions</i>	4
<i>Details</i>	6
<i>Harmonies</i>	11
<i>Previews</i>	23
<i>Color Blindness Simulation</i>	26
<i>CSS Examples</i>	29

Color

RGB(255, 192, 198)

Conversions

Conversions Part 1

Format	Color
Hex	FFC0C6
RGB	255, 192, 198
RGB Percent	100%, 75%, 78%
CMY	0.0000, 0.2471, 0.2235
CMYK	0.00, 0.25, 0.22, 0.00
HSL	354°, 100%, 88%
HSV	354°, 25%, 100%
XYZ	70.2827, 63.0365, 61.8890
YIQ	211.5210, 35.6220, 15.2220

Conversions

Conversions Part 2

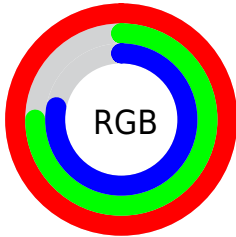
Format	Color
R _Y B	255, 192, 198
Decimal	16761030
CIE Lab	83.46, 23.43, 5.81
CIE LCh	83, 24.137, 13.938
Yxy	63.0365, 0.3600, 0.3229
Android (android.graphics.Color)	4294951110 (0xFFFFC0C6)
YUV	211.5210, -6.6659, 38.1311
Hunter-Lab	79.3955, 19.0700, 9.3601

Details

The RGB color **255, 192, 198** is a light color, and the websafe version is hex **FFCCCC**. A complement of this color would be **192, 255, 249**, and the grayscale version is **212, 212, 212**.

A 20% lighter version of the original color is **255, 249, 255**, and **197, 138, 144** is the 20% darker color. If you saturate the color by 10%, you get **255, 167, 175**, and if you desaturate by 10%, it is **255, 218, 221**.

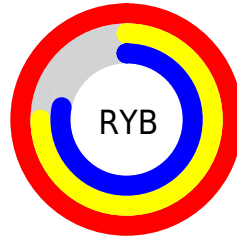
Distribution



Red (100%)

Green (75%)

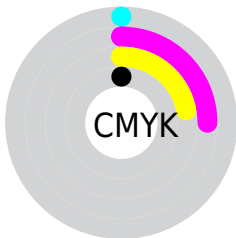
Blue (78%)



Red (100%)

Yellow (75%)

Blue (78%)

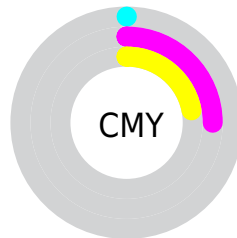


Cyan (0%)

Magenta (25%)

Yellow (22%)

Black (0%)



Cyan (0%)

Magenta (25%)

Yellow (22%)

Brightness & Saturation Gradients


These gradients show how the RGB color 255, 192, 198 changes by changing the brightness by 10 percent. The first figure shows a shift by +10% for each color and the second figure -10%.

Similar to the brightness gradients but the following saturation gradients show a change of the RGB color 255, 192, 198 by changing the saturation by 10% instead.


 255, 192, 198

 255, 192, 198

255, 255, 255

 226, 165, 171


 255, 249, 255

 197, 138, 144

 169, 112, 119

 142, 88, 94

 116, 64, 70

 90, 41, 48

 65, 18, 27

 43, 0, 0

 0, 0, 0

 255, 192, 198

 255, 192, 198

 255, 167, 175

 255, 218, 221

 255, 141, 152

 255, 243, 244

 255, 116, 129

255, 255, 255

 255, 90, 106

 255, 65, 83

 255, 39, 60

 255, 14, 37

 255, 0, 24

Harmonies

Analogous

The Analogous color harmony consists of three colors that are next to each other on the color wheel.



246, 193, 221



255, 192, 198



251, 196, 177

Triad

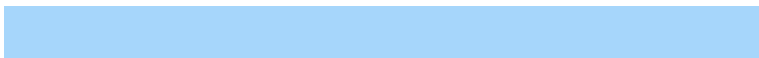
The Triadic color harmony groups three colors that are evenly spaced from another and form a triangle on the color wheel.



255, 192, 198



188, 216, 175



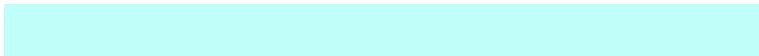
166, 214, 251

Complementary

The Complementary color scheme is a pair of colors which are on the opposite of each other on the color wheel.



255, 192, 198



192, 255, 249

Split Complementary

Split-complementary colors differ from the complementary color scheme. The scheme consists of three colors, the original color and two neighbors of the complement color.



147, 219, 239



255, 192, 198



164, 220, 195

Square

The Square scheme is like the rectangle color scheme, but the four colors are evenly spaced on the color wheel.



255, 192, 198



214, 210, 164



147, 221, 218



196, 206, 252

Rectangle

The Rectangle color scheme consists of four colors that form a rectangle on the color wheel.



255, 192, 198



243, 200, 168



147, 221, 218



158, 216, 248

Sweetspot

The Sweet Spot groups the original color and five complimentary colors.



255, 192, 198



255, 237, 239



249, 192, 255



128, 117, 118



0, 0, 0



128, 128, 128

Same Dimension

The Same Dimension uses a secret algorithm to generate beautiful new colors.



255, 192, 198



255, 179, 186



255, 217, 192



128, 115, 116



191, 0, 18



64, 0, 6

Inverse Universe

The Inverse Universe completely reimagines the original color for something new.



255, 192, 198



255, 179, 186



192, 230, 255



128, 115, 116



191, 0, 18



64, 0, 6

Previews

White Background



This preview shows how the RGB color 255, 192, 198 looks on a white background.

Color Contrast Check

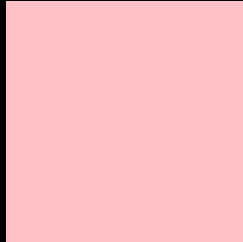
Large Text (above 18pt) WCAG AA × Fail

Any Text WCAG AA × Fail

Large Text (above 18pt) WCAG AAA × Fail

Any Text WCAG AAA × Fail

Black Background



This preview shows how the RGB color 255, 192, 198 looks on a black background.

Color Contrast Check

Large Text (above 18pt) WCAG AA ✓ Pass

Any Text WCAG AA ✓ Pass

Large Text (above 18pt) WCAG AAA ✓ Pass

Any Text WCAG AAA ✓ Pass

If you want to check with other color combinations, try the [Color Contrast Checker](#).

RGB 255, 192, 198 Background



This preview shows how black text looks on a background with the RGB color 255, 192, 198.



This preview shows how white text looks on a background with the RGB color 255, 192, 198.

Color Blindness Simulation

Color vision deficiency is a very complex topic, and I could not describe the different causes any better than Wikipedia does, so if you want to learn more, you should check out their [article about color blindness](#).


Dichromacy



Original Color
255, 192, 198

Protanopia
212, 207, 207

Deuteranopia
233, 201, 196



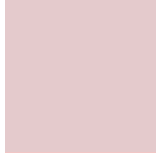
Tritanopia
255, 191, 206

Trichromacy



Original Color

255, 192, 198



Protanomaly

228, 202, 204



Deuteranomaly

241, 198, 197



Tritanomaly

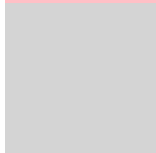
255, 191, 203

Monochromacy



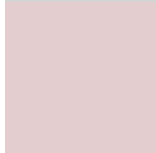
Original Color

255, 192, 198



Achromatopsia

212, 212, 212



Achromatomaly

228, 205, 207

CSS Examples

Text

The CSS property to change the color of the text to RGB 255, 192, 198 is called "color". The color property can be set on classes, ids or directly on the HTML element.

This example shows how text in the color `rgb(255, 192, 198)` looks like.

```
.text, #text, p{  
    color:rgb(255, 192, 198)  
}
```

If you want to add a text shadow in that color use the text-shadow property, you can generate a text shadow directly with our [CSS Text Shadow Generator](#).

Here you see how black text with a 4 pixel rgb(255, 192, 198) colored shadow looks like.

```
.shadow{ text-shadow: 4px 4px 2px rgb(255, 192, 198) }
```

Border

The CSS property to change the border of an element to RGB 255, 192, 198 is called "border". The border property can be set on classes, ids or directly on the HTML element.

This example shows the color as border, it can be applied via the CSS property "border" or "border-color".

```
.border, #border, table{ border:4px solid rgb(255, 192, 198) }
```

If only the border color should be changed use the property `border-color`.

```
.border{ border-color:rgb(255, 192, 198) }
```

If you want to add a box shadow in that color use:

Here you see how a box with a 4 pixel `rgb(255, 192, 198)` colored shadow looks like.

```
.boxshadow{ -moz-box-shadow:4px 4px 4px  
4px rgb(255, 192, 198); -webkit-box-  
shadow:4px 4px 4px 4px rgb(255, 192, 198);  
box-shadow:4px 4px 4px 4px rgb(255, 192,  
198) }
```

Background

The CSS property to change the background color of an element to RGB 255, 192, 198 is called "background". The background property can be set on classes, ids or directly on the HTML element.

```
.background, #background, body{  
background: rgb(255, 192, 198) }
```

If only the background color should be changed can be used:

```
.background{ background-color: rgb(255,  
192, 198) }
```

This example shows the color as background, it is applied via the CSS property "background".

To optimize and compress your CSS code, you can use our [online CSS compressor and optimizer](#) based on csstidy. If you want to create a linear or radial gradient as background or border, check our [CSS Gradient Generator](#).

Hey! You found this booklet interesting? Support Converting Colors with the new Membership Option!

The pro membership hides all ads, plus gives you double the colors in the color bucket, and more awesome pro features!

[Learn more, Memberships starting at \\$2.50/m!](#)

**Follow me
on Twitter!**

@ConvertingColor