

Converting Colors

RGB(255, 193, 192)

Have a look what the booklet for
RGB(255, 193, 192) contains.

RGB(255, 193, 192)	3
<i>Conversions</i>	4
<i>Details</i>	6
<i>Harmonies</i>	11
<i>Previews</i>	23
<i>Color Blindness Simulation</i>	26
<i>CSS Examples</i>	29

Color

RGB(255, 193, 192)

Conversions

Conversions Part 1

Format	Color
Hex	FFC1C0
RGB	255, 193, 192
RGB Percent	100%, 76%, 75%
CMY	0.0000, 0.2431, 0.2471
CMYK	0.00, 0.24, 0.25, 0.00
HSL	1°, 100%, 88%
HSV	1°, 25%, 100%
XYZ	69.8244, 63.2057, 58.3889
YIQ	211.4240, 37.2730, 12.8330

Conversions

Conversions Part 2

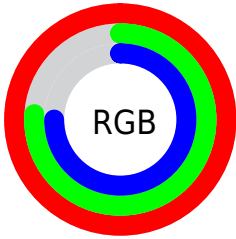
Format	Color
R _Y B	255, 193, 192
Decimal	16761280
CIE Lab	83.55, 22.06, 9.15
CIE LCh	84, 23.881, 22.532
Yxy	63.2057, 0.3648, 0.3302
Android (android.graphics.Color)	4294951360 (0xFFFFC1C0)
YUV	211.4240, -9.5760, 38.2162
Hunter-Lab	79.5020, 17.6430, 12.1068

Details

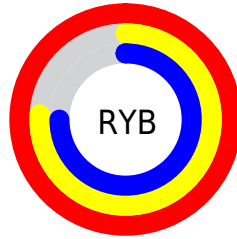
The RGB color **255, 193, 192** is a light color, and the websafe version is hex **FFCCCC**. A complement of this color would be **192, 254, 255**, and the grayscale version is **211, 211, 211**.

A 20% lighter version of the original color is **255, 250, 248**, and **197, 139, 139** is the 20% darker color. If you saturate the color by 10%, you get **255, 168, 167**, and if you desaturate by 10%, it is **255, 218, 218**.

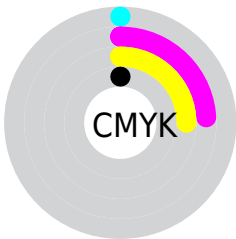
Distribution



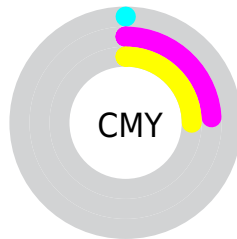
- Red (100%)
- Green (76%)
- Blue (75%)



- Red (100%)
- Yellow (76%)
- Blue (75%)



- Cyan (0%)
- Magenta (24%)
- Yellow (25%)
- Black (0%)



- Cyan (0%)
- Magenta (24%)
- Yellow (25%)

Brightness & Saturation Gradients

These gradients show how the RGB color 255, 193, 192 changes by changing the brightness by 10 percent. The first figure shows a shift by +10% for each color and the second figure -10%.

Similar to the brightness gradients but the following saturation gradients show a change of the RGB color 255, 193, 192 by changing the saturation by 10% instead.


 255, 193, 192

 255, 193, 192

255, 255, 255

 226, 166, 165

 255, 250, 248

 197, 139, 139

 169, 113, 113

 142, 89, 89

 115, 65, 65

 89, 42, 43

 64, 20, 23

 42, 0, 0

 0, 0, 0

■ 255, 193, 192

■ 255, 193, 192

■ 255, 168, 167

■ 255, 218, 218

■ 255, 143, 141

■ 255, 243, 243

■ 255, 118, 116

255, 255, 255

■ 255, 93, 90

■ 255, 68, 65

■ 255, 42, 39

■ 255, 17, 14

■ 255, 4, 0

Harmonies

Analogous

The Analogous color harmony consists of three colors that are next to each other on the color wheel.



250, 193, 215



255, 193, 192



248, 198, 173

Triad

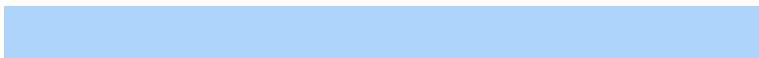
The Triadic color harmony groups three colors that are evenly spaced from another and form a triangle on the color wheel.



255, 193, 192



182, 218, 180



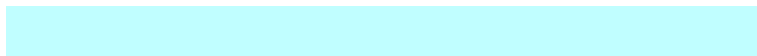
175, 212, 252

Complementary

The Complementary color scheme is a pair of colors which are on the opposite of each other on the color wheel.



255, 193, 192



192, 254, 255

Split Complementary

Split-complementary colors differ from the complementary color scheme. The scheme consists of three colors, the original color and two neighbors of the complement color.



152, 218, 243



255, 193, 192



159, 221, 202

Square

The Square scheme is like the rectangle color scheme, but the four colors are evenly spaced on the color wheel.



255, 193, 192



207, 212, 167



146, 221, 225



205, 204, 250

Rectangle

The Rectangle color scheme consists of four colors that form a rectangle on the color wheel.



255, 193, 192



237, 202, 166



146, 221, 225



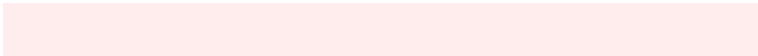
166, 214, 250

Sweetspot

The Sweet Spot groups the original color and five complimentary colors.



255, 193, 192



255, 237, 237



255, 192, 255



128, 117, 117



0, 0, 0



128, 128, 128

Same Dimension

The Same Dimension uses a secret algorithm to generate beautiful new colors.



255, 193, 192



255, 180, 179



255, 224, 192



128, 115, 115



191, 3, 0



64, 1, 0

Inverse Universe

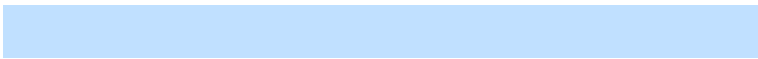
The Inverse Universe completely reimagines the original color for something new.



192, 254, 255



179, 254, 255



192, 224, 255



115, 127, 128



0, 188, 191



0, 63, 64

Previews

White Background



This preview shows how the RGB color 255, 193, 192 looks on a white background.

Color Contrast Check

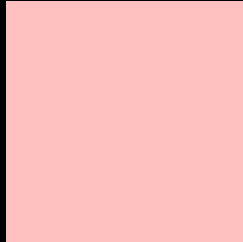
Large Text (above 18pt) WCAG AA × Fail

Any Text WCAG AA × Fail

Large Text (above 18pt) WCAG AAA × Fail

Any Text WCAG AAA × Fail

Black Background



This preview shows how the RGB color 255, 193, 192 looks on a black background.

Color Contrast Check

Large Text (above 18pt) WCAG AA ✓ Pass

Any Text WCAG AA ✓ Pass

Large Text (above 18pt) WCAG AAA ✓ Pass

Any Text WCAG AAA ✓ Pass

If you want to check with other color combinations, try the [Color Contrast Checker](#).

RGB 255, 193, 192 Background



This preview shows how black text looks on a background with the RGB color 255, 193, 192.



This preview shows how white text looks on a background with the RGB color 255, 193, 192.

Color Blindness Simulation

Color vision deficiency is a very complex topic, and I could not describe the different causes any better than Wikipedia does, so if you want to learn more, you should check out their [article about color blindness](#).


Dichromacy



Original Color
255, 193, 192

Protanopia
214, 208, 200

Deuteranopia
235, 201, 190



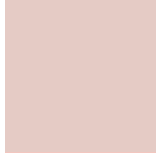
Tritanopia
255, 192, 206

Trichromacy



Original Color

255, 193, 192



Protanomaly

229, 203, 197



Deuteranomaly

242, 198, 191



Tritanomaly

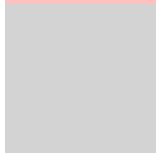
255, 192, 201

Monochromacy



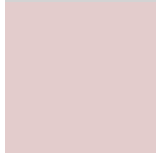
Original Color

255, 193, 192



Achromatopsia

211, 211, 211



Achromatomaly

227, 204, 204

CSS Examples

Text

The CSS property to change the color of the text to RGB 255, 193, 192 is called "color". The color property can be set on classes, ids or directly on the HTML element.

This example shows how text in the color `rgb(255, 193, 192)` looks like.

```
.text, #text, p{  
    color:rgb(255, 193, 192)  
}
```

If you want to add a text shadow in that color use the text-shadow property, you can generate a text shadow directly with our [CSS Text Shadow Generator](#).

Here you see how black text with a 4 pixel rgb(255, 193, 192) colored shadow looks like.

```
.shadow{ text-shadow: 4px 4px 2px rgb(255, 193, 192) }
```

Border

The CSS property to change the border of an element to RGB 255, 193, 192 is called "border". The border property can be set on classes, ids or directly on the HTML element.

This example shows the color as border, it can be applied via the CSS property "border" or "border-color".

```
.border, #border, table{ border:4px solid rgb(255, 193, 192) }
```

If only the border color should be changed use the property `border-color`.

```
.border{ border-color:rgb(255, 193, 192) }
```

If you want to add a box shadow in that color use:

Here you see how a box with a 4 pixel `rgb(255, 193, 192)` colored shadow looks like.

```
.boxshadow{ -moz-box-shadow:4px 4px 4px  
4px rgb(255, 193, 192); -webkit-box-  
shadow:4px 4px 4px 4px rgb(255, 193, 192);  
box-shadow:4px 4px 4px 4px rgb(255, 193,  
192) }
```

Background

The CSS property to change the background color of an element to RGB 255, 193, 192 is called "background". The background property can be set on classes, ids or directly on the HTML element.

```
.background, #background, body{  
background: rgb(255, 193, 192) }
```

If only the background color should be changed can be used:

```
.background{ background-color: rgb(255,  
193, 192) }
```

This example shows the color as background, it is applied via the CSS property "background".

To optimize and compress your CSS code, you can use our [online CSS compressor and optimizer](#) based on csstidy. If you want to create a linear or radial gradient as background or border, check our [CSS Gradient Generator](#).

Hey! You found this booklet interesting? Support Converting Colors with the new Membership Option!

The pro membership hides all ads, plus gives you double the colors in the color bucket, and more awesome pro features!

[Learn more, Memberships starting at \\$2.50/m!](#)

**Follow me
on Twitter!**

@ConvertingColor