

Converting Colors

RGB(255, 197, 211)

Have a look what the booklet for
RGB(255, 197, 211) contains.

RGB(255, 197, 211)	3
<i>Conversions</i>	4
<i>Details</i>	6
<i>Harmonies</i>	11
<i>Previews</i>	23
<i>Color Blindness Simulation</i>	26
<i>CSS Examples</i>	29

Color

RGB(255, 197, 211)

Conversions

Conversions Part 1

Format	Color
Hex	FFC5D3
RGB	255, 197, 211
RGB Percent	100%, 77%, 83%
CMY	0.0000, 0.2275, 0.1725
CMYK	0.00, 0.23, 0.17, 0.00
HSL	346°, 100%, 89%
HSV	346°, 23%, 100%
XYZ	72.9641, 65.8957, 70.5015
YIQ	215.9380, 30.0740, 16.6500

Conversions

Conversions Part 2

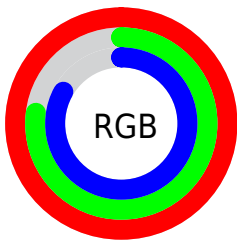
Format	Color
R _Y B	255, 197, 211
Decimal	16762323
CIE Lab	84.94, 22.72, 1.01
CIE LCh	85, 22.742, 2.557
Yxy	65.8957, 0.3485, 0.3147
Android (android.graphics.Color)	4294952403 (0xFFFFC5D3)
YUV	215.9380, -2.4344, 34.2574
Hunter-Lab	81.1761, 18.3842, 5.3299

Details

The RGB color **255, 197, 211** is a light color, and the websafe version is hex **FFCCCC**. A complement of this color would be **197, 255, 241**, and the grayscale version is **216, 216, 216**.

A 20% lighter version of the original color is 255, 254, 255, and **198, 143, 157** is the 20% darker color. If you saturate the color by 10%, you get **255, 172, 192**, and if you desaturate by 10%, it is **255, 223, 230**.

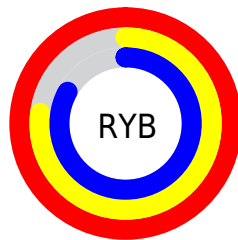
Distribution



Red (100%)

Green (77%)

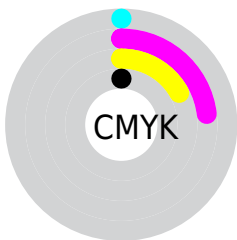
Blue (83%)



Red (100%)

Yellow (77%)

Blue (83%)

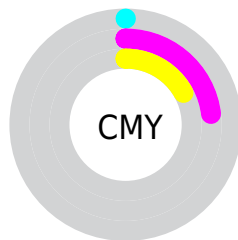


Cyan (0%)

Magenta (23%)

Yellow (17%)

Black (0%)



Cyan (0%)

Magenta (23%)

Yellow (17%)

Brightness & Saturation Gradients


These gradients show how the RGB color 255, 197, 211 changes by changing the brightness by 10 percent. The first figure shows a shift by +10% for each color and the second figure -10%.

Similar to the brightness gradients but the following saturation gradients show a change of the RGB color 255, 197, 211 by changing the saturation by 10% instead.

 255, 197, 211


 255, 197, 211

255, 255, 255

 226, 170, 183


255, 254, 255

 198, 143, 157

 170, 117, 131

 143, 92, 105

 116, 68, 81

 91, 45, 58

 66, 23, 37

 43, 0, 16

 2, 0, 0

255, 197, 211

255, 197, 211

255, 172, 192

255, 223, 230

255, 146, 172

255, 248, 250

255, 121, 153

255, 255, 255

255, 95, 134

255, 69, 114

255, 44, 95

255, 18, 76

255, 0, 62

Harmonies

Analogous

The Analogous color harmony consists of three colors that are next to each other on the color wheel.



242, 200, 232



255, 197, 211



255, 199, 190

Triad

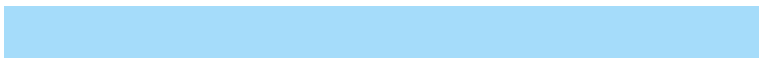
The Triadic color harmony groups three colors that are evenly spaced from another and form a triangle on the color wheel.



255, 197, 211



203, 218, 176



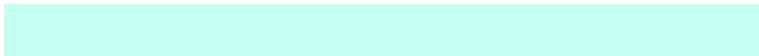
165, 220, 250

Complementary

The Complementary color scheme is a pair of colors which are on the opposite of each other on the color wheel.



255, 197, 211



197, 255, 241

Split Complementary

Split-complementary colors differ from the complementary color scheme. The scheme consists of three colors, the original color and two neighbors of the complement color.



154, 224, 234



255, 197, 211



179, 223, 192

Square

The Square scheme is like the rectangle color scheme, but the four colors are evenly spaced on the color wheel.



255, 197, 211



227, 211, 169



160, 225, 213



190, 213, 255

Rectangle

The Rectangle color scheme consists of four colors that form a rectangle on the color wheel.



255, 197, 211



250, 202, 179



160, 225, 213



159, 221, 245

Sweetspot

The Sweet Spot groups the original color and five complimentary colors.



255, 197, 211



255, 237, 241



241, 197, 255



128, 117, 120



0, 0, 0



128, 128, 128

Same Dimension

The Same Dimension uses a secret algorithm to generate beautiful new colors.



255, 197, 211



255, 186, 203



255, 212, 197



128, 115, 118



191, 0, 46



64, 0, 15

Inverse Universe

The Inverse Universe completely reimagines the original color for something new.



255, 197, 211



255, 186, 203



197, 241, 255



128, 115, 118



191, 0, 46



64, 0, 15

Previews

White Background



This preview shows how the RGB color 255, 197, 211 looks on a white background.

Color Contrast Check

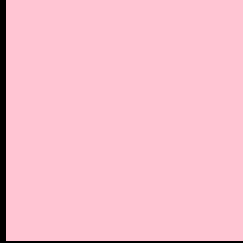
Large Text (above 18pt) WCAG AA × Fail

Any Text WCAG AA × Fail

Large Text (above 18pt) WCAG AAA × Fail

Any Text WCAG AAA × Fail

Black Background



This preview shows how the RGB color 255, 197, 211 looks on a black background.

Color Contrast Check

Large Text (above 18pt) WCAG AA ✓ Pass

Any Text WCAG AA ✓ Pass

Large Text (above 18pt) WCAG AAA ✓ Pass

Any Text WCAG AAA ✓ Pass

If you want to check with other color combinations, try the [Color Contrast Checker](#).

RGB 255, 197, 211 Background



This preview shows how black text looks on a background with the RGB color 255, 197, 211.



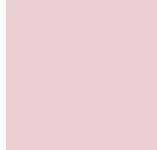


This preview shows how white text looks on a background with the RGB color 255, 197, 211.

Color Blindness Simulation

Color vision deficiency is a very complex topic, and I could not describe the different causes any better than Wikipedia does, so if you want to learn more, you should check out their [article about color blindness](#).

Dichromacy

	Original Color 255, 197, 211
	Protanopia 214, 211, 219
	Deuteranopia 234, 206, 209



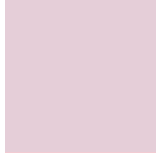
Tritanopia
255, 197, 212

Trichromacy



Original Color

255, 197, 211



Protanomaly

229, 206, 216



Deuteranomaly

242, 203, 210



Tritanomaly

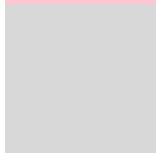
255, 197, 212

Monochromacy



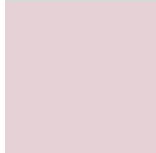
Original Color

255, 197, 211



Achromatopsia

216, 216, 216



Achromatomaly

230, 209, 214

CSS Examples

Text

The CSS property to change the color of the text to RGB 255, 197, 211 is called "color". The color property can be set on classes, ids or directly on the HTML element.

This example shows how text in the color `rgb(255, 197, 211)` looks like.

```
.text, #text, p{  
    color:rgb(255, 197, 211)  
}
```

If you want to add a text shadow in that color use the text-shadow property, you can generate a text shadow directly with our [CSS Text Shadow Generator](#).

Here you see how black text with a 4 pixel rgb(255, 197, 211) colored shadow looks like.

```
.shadow{ text-shadow: 4px 4px 2px rgb(255, 197, 211) }
```

Border

The CSS property to change the border of an element to RGB 255, 197, 211 is called "border". The border property can be set on classes, ids or directly on the HTML element.

This example shows the color as border, it can be applied via the CSS property "border" or "border-color".

```
.border, #border, table{ border:4px solid rgb(255, 197, 211) }
```

If only the border color should be changed use the property `border-color`.

```
.border{ border-color:rgb(255, 197, 211) }
```

If you want to add a box shadow in that color use:

Here you see how a box with a 4 pixel `rgb(255, 197, 211)` colored shadow looks like.

```
.boxshadow{ -moz-box-shadow:4px 4px 4px  
4px rgb(255, 197, 211); -webkit-box-  
shadow:4px 4px 4px 4px rgb(255, 197, 211);  
box-shadow:4px 4px 4px 4px rgb(255, 197,  
211) }
```

Background

The CSS property to change the background color of an element to RGB 255, 197, 211 is called "background". The background property can be set on classes, ids or directly on the HTML element.

```
.background, #background, body{  
background: rgb(255, 197, 211) }
```

If only the background color should be changed can be used:

```
.background{ background-color: rgb(255,  
197, 211) }
```

This example shows the color as background, it is applied via the CSS property "background".

To optimize and compress your CSS code, you can use our [online CSS compressor and optimizer](#) based on csstidy. If you want to create a linear or radial gradient as background or border, check our [CSS Gradient Generator](#).

Hey! You found this booklet interesting? Support Converting Colors with the new Membership Option!

The pro membership hides all ads, plus gives you double the colors in the color bucket, and more awesome pro features!

[Learn more, Memberships starting at \\$2.50/m!](#)

**Follow me
on Twitter!**

@ConvertingColor