

Converting Colors

RGB(255, 65, 130)

Have a look what the booklet for
RGB(255, 65, 130) contains.

RGB(255, 65, 130)	3
<i>Conversions</i>	4
<i>Details</i>	6
<i>Harmonies</i>	11
<i>Previews</i>	23
<i>Color Blindness Simulation</i>	26
<i>CSS Examples</i>	29

Color

RGB(255, 65, 130)

Conversions

Conversions Part 1

Format	Color
Hex	FF4182
RGB	255, 65, 130
RGB Percent	100%, 25%, 51%
CMY	0.0000, 0.7451, 0.4902
CMYK	0.00, 0.75, 0.49, 0.00
HSL	339°, 100%, 63%
HSV	339°, 75%, 100%
XYZ	47.1596, 26.6523, 23.7779
YIQ	129.2200, 92.3750, 60.4950

Conversions

Conversions Part 2

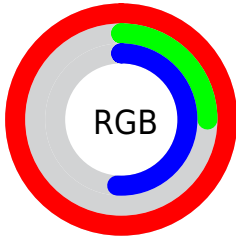
Format	Color
R_{YB}	255, 65, 130
Decimal	16728450
CIE _{Lab}	58.65, 74.06, 8.27
CIE _{LCh}	59, 74.523, 6.371
Yxy	26.6523, 0.4832, 0.2731
Android (android.graphics.Color)	4294918530 (0xFFFF4182)
YUV	129.2200, 0.3845, 110.3091
Hunter-Lab	51.6259, 72.7122, 8.8302

Details

The RGB color **255, 65, 130** is a light color, and the websafe version is hex **FF6699**. The color can be described as light washed rose. A complement of this color would be **65, 255, 190**, and the grayscale version is **129, 129, 129**.

A 20% lighter version of the original color is **255, 128, 183**, and **192, 0, 81** is the 20% darker color. If you saturate the color by 10%, you get **255, 39, 113**, and if you desaturate by 10%, it is **255, 90, 147**.

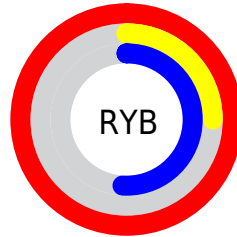
Distribution



Red (100%)

Green (25%)

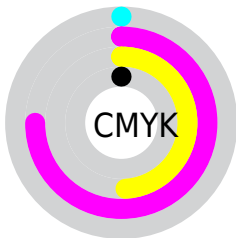
Blue (51%)



Red (100%)

Yellow (25%)

Blue (51%)

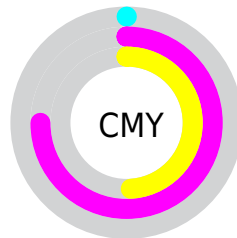


Cyan (0%)

Magenta (75%)

Yellow (49%)

Black (0%)



Cyan (0%)


Magenta (75%)

Yellow (49%)

Brightness & Saturation Gradients

These gradients show how the RGB color 255, 65, 130 changes by changing the brightness by 10 percent. The first figure shows a shift by +10% for each color and the second figure -10%.

Similar to the brightness gradients but the following saturation gradients show a change of the RGB color 255, 65, 130 by changing the saturation by 10% instead.

 255, 65, 130

 255, 65, 130

255, 255, 255

 223, 21, 105

 255, 128, 183

 192, 0, 81

 255, 157, 210

 161, 0, 59

 255, 187, 238

 130, 0, 37

 255, 217, 255

 100, 0, 17

 255, 247, 255

 71, 0, 4

 39, 0, 1

 0, 0, 0

 255, 65, 130

 255, 65, 130

■ 255, 39, 113

■ 255, 90, 147

■ 255, 14, 96

■ 255, 116, 164

■ 255, 0, 87

■ 255, 142, 180

■ 255, 167, 197

■ 255, 193, 214

■ 255, 218, 231

■ 255, 243, 247

255, 255, 255

Harmonies

Analogous

The Analogous color harmony consists of three colors that are next to each other on the color wheel.



229, 82, 195



255, 65, 130



246, 86, 67

Triad

The Triadic color harmony groups three colors that are evenly spaced from another and form a triangle on the color wheel.



255, 65, 130



87, 158, 4



0, 162, 255

Complementary

The Complementary color scheme is a pair of colors which are on the opposite of each other on the color wheel.



255, 65, 130



65, 255, 190

Split Complementary

Split-complementary colors differ from the complementary color scheme. The scheme consists of three colors, the original color and two neighbors of the complement color.



0, 169, 217



255, 65, 130



0, 167, 85

Square

The Square scheme is like the rectangle color scheme, but the four colors are evenly spaced on the color wheel.



255, 65, 130



157, 143, 0



0, 170, 154



0, 145, 255

Rectangle

The Rectangle color scheme consists of four colors that form a rectangle on the color wheel.



255, 65, 130



225, 108, 23



0, 170, 154



0, 165, 250

Sweetspot

The Sweet Spot groups the original color and five complimentary colors.



255, 65, 130



255, 199, 218



189, 65, 255



128, 94, 106



0, 0, 0



128, 128, 128

Same Dimension

The Same Dimension uses a secret algorithm to generate beautiful new colors.



255, 65, 130



255, 28, 106



255, 94, 65



128, 115, 119



191, 0, 65



64, 0, 22

Inverse Universe

The Inverse Universe completely reimagines the original color for something new.



255, 65, 130



255, 28, 106



65, 226, 255



128, 115, 119



191, 0, 65



64, 0, 22

Previews

White Background



This preview shows how the RGB color 255, 65, 130 looks on a white background.

Color Contrast Check

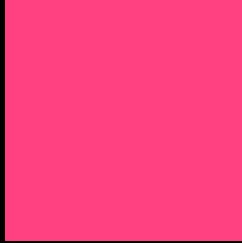
Large Text (above 18pt) WCAG AA ✓ Pass

Any Text WCAG AA ✗ Fail

Large Text (above 18pt) WCAG AAA ✗ Fail

Any Text WCAG AAA ✗ Fail

Black Background



This preview shows how the RGB color 255, 65, 130 looks on a black background.

Color Contrast Check

Large Text (above 18pt) WCAG AA ✓ Pass

Any Text WCAG AA ✓ Pass

Large Text (above 18pt) WCAG AAA ✓ Pass

Any Text WCAG AAA × Fail

If you want to check with other color combinations, try the [Color Contrast Checker](#).

RGB 255, 65, 130 Background



This preview shows how black text looks on a background with the RGB color 255, 65, 130.

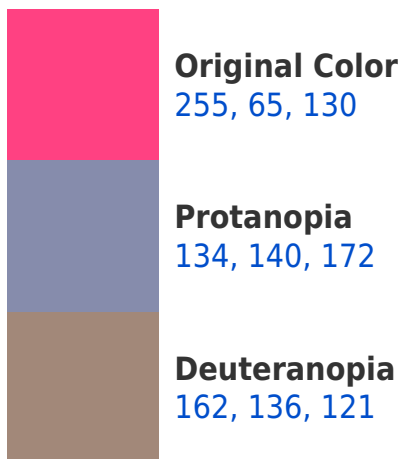


This preview shows how white text looks on a background with the RGB color 255, 65, 130.

Color Blindness Simulation

Color vision deficiency is a very complex topic, and I could not describe the different causes any better than Wikipedia does, so if you want to learn more, you should check out their [article about color blindness](#).

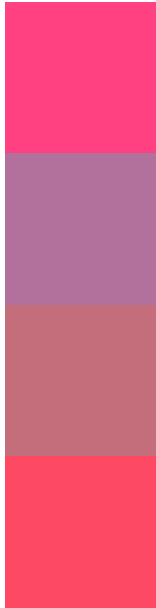
Dichromacy





Tritanopia
252, 77, 81

Trichromacy



Original Color
255, 65, 130

Protanomaly
178, 113, 157

Deuteranomaly
196, 110, 124

Tritanomaly
253, 73, 99

Monochromacy



Original Color
255, 65, 130

Achromatopsia
129, 129, 129

Achromatomaly
175, 106, 129

CSS Examples

Text

The CSS property to change the color of the text to RGB 255, 65, 130 is called "color". The color property can be set on classes, ids or directly on the HTML element.

This example shows how text in the color `rgb(255, 65, 130)` looks like.

```
.text, #text, p{  
    color:rgb(255, 65, 130)  
}
```

If you want to add a text shadow in that color use the text-shadow property, you can generate a text shadow directly with our [CSS Text Shadow Generator](#).

Here you see how black text with a 4 pixel rgb(255, 65, 130) colored shadow looks like.

```
.shadow{ text-shadow: 4px 4px 2px rgb(255, 65, 130) }
```

Border

The CSS property to change the border of an element to RGB 255, 65, 130 is called "border". The border property can be set on classes, ids or directly on the HTML element.

This example shows the color as border, it can be applied via the CSS property "border" or "border-color".

```
.border, #border, table{ border:4px solid rgb(255, 65, 130) }
```

If only the border color should be changed use the property `border-color`.

```
.border{ border-color:rgb(255, 65, 130) }
```

If you want to add a box shadow in that color use:

Here you see how a box with a 4 pixel `rgb(255, 65, 130)` colored shadow looks like.

```
.boxshadow{ -moz-box-shadow:4px 4px 4px  
4px rgb(255, 65, 130); -webkit-box-  
shadow:4px 4px 4px 4px rgb(255, 65, 130);  
box-shadow:4px 4px 4px 4px rgb(255, 65,  
130) }
```

Background

The CSS property to change the background color of an element to RGB 255, 65, 130 is called "background". The background property can be set on classes, ids or directly on the HTML element.

```
.background, #background, body{  
background: rgb(255, 65, 130) }
```

If only the background color should be changed can be used:

```
.background{ background-color: rgb(255, 65,  
130) }
```

This example shows the color as background, it is applied via the CSS property "background".

To optimize and compress your CSS code, you can use our [online CSS compressor and optimizer](#) based on csstidy. If you want to create a linear or radial gradient as background or border, check our [CSS Gradient Generator](#).

Hey! You found this booklet interesting? Support Converting Colors with the new Membership Option!

The pro membership hides all ads, plus gives you double the colors in the color bucket, and more awesome pro features!

[Learn more, Memberships starting at \\$2.50/m!](#)

**Follow me
on Twitter!**

@ConvertingColor