

Converting Colors

RGB(255, 77, 140)

Have a look what the booklet for
RGB(255, 77, 140) contains.

RGB(255, 77, 140)	3
<i>Conversions</i>	4
<i>Details</i>	6
<i>Harmonies</i>	11
<i>Previews</i>	23
<i>Color Blindness Simulation</i>	26
<i>CSS Examples</i>	29

Color

RGB(255, 77, 140)

Conversions

Conversions Part 1

Format	Color
Hex	FF4D8C
RGB	255, 77, 140
RGB Percent	100%, 30%, 55%
CMY	0.0000, 0.6980, 0.4510
CMYK	0.00, 0.70, 0.45, 0.00
HSL	339°, 100%, 65%
HSV	339°, 70%, 100%
XYZ	48.6275, 28.4612, 27.7416
YIQ	137.4040, 85.8650, 57.3290

Conversions

Conversions Part 2

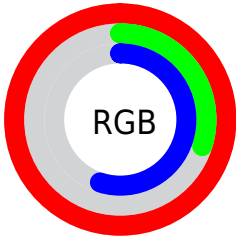
Format	Color
R _Y B	255, 77, 140
Decimal	16731532
CIE Lab	60.30, 71.01, 4.77
CIE LCh	60, 71.167, 3.840
Yxy	28.4612, 0.4639, 0.2715
Android (android.graphics.Color)	4294921612 (0xFFFF4D8C)
YUV	137.4040, 1.2798, 103.1317
Hunter-Lab	53.3490, 69.3414, 6.5135

Details

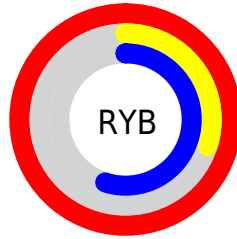
The RGB color **255, 77, 140** is a light color, and the websafe version is hex **FF6699**. The color can be described as light washed rose. A complement of this color would be **77, 255, 192**, and the grayscale version is **137, 137, 137**.

A 20% lighter version of the original color is **255, 137, 193**, and **193, 0, 90** is the 20% darker color. If you saturate the color by 10%, you get **255, 52, 124**, and if you desaturate by 10%, it is **255, 103, 156**.

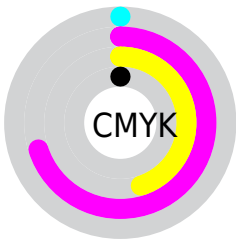
Distribution



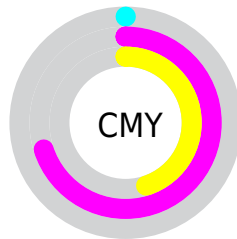
- Red (100%)
- Green (30%)
- Blue (55%)



- Red (100%)
- Yellow (30%)
- Blue (55%)



- Cyan (0%)
- Magenta (70%)
- Yellow (45%)
- Black (0%)





- Cyan (0%)
- Magenta (70%)
- Yellow (45%)

Brightness & Saturation Gradients

These gradients show how the RGB color 255, 77, 140 changes by changing the brightness by 10 percent. The first figure shows a shift by +10% for each color and the second figure -10%.

Similar to the brightness gradients but the following saturation gradients show a change of the RGB color 255, 77, 140 by changing the saturation by 10% instead.

 255, 77, 140

 255, 77, 140

255, 255, 255

 224, 42, 115

 255, 137, 193

 193, 0, 90

 255, 166, 221

 162, 0, 67

 255, 196, 250

 132, 0, 45


 255, 226, 255

 102, 0, 25

 74, 0, 4

 42, 0, 1

 0, 0, 0

 255, 77, 140

 255, 77, 140

■ 255, 52, 124

■ 255, 103, 156

■ 255, 26, 107

■ 255, 128, 173

■ 255, 1, 91

■ 255, 154, 189

■ 255, 0, 90

■ 255, 179, 206

■ 255, 205, 222

■ 255, 230, 239

255, 255, 255

Harmonies

Analogous

The Analogous color harmony consists of three colors that are next to each other on the color wheel.



226, 94, 202



255, 77, 140



249, 92, 79

Triad

The Triadic color harmony groups three colors that are evenly spaced from another and form a triangle on the color wheel.



255, 77, 140



102, 161, 20



0, 166, 255

Complementary

The Complementary color scheme is a pair of colors which are on the opposite of each other on the color wheel.



255, 77, 140



77, 255, 192

Split Complementary

Split-complementary colors differ from the complementary color scheme. The scheme consists of three colors, the original color and two neighbors of the complement color.



0, 173, 214



255, 77, 140



0, 170, 87

Square

The Square scheme is like the rectangle color scheme, but the four colors are evenly spaced on the color wheel.



255, 77, 140



167, 145, 0



0, 174, 152



0, 150, 255

Rectangle

The Rectangle color scheme consists of four colors that form a rectangle on the color wheel.



255, 77, 140



230, 111, 41



0, 174, 152



0, 169, 246

Sweetspot

The Sweet Spot groups the original color and five complimentary colors.



255, 77, 140



255, 201, 220



190, 77, 255



128, 96, 107



0, 0, 0



128, 128, 128

Same Dimension

The Same Dimension uses a secret algorithm to generate beautiful new colors.



255, 77, 140



255, 41, 117



255, 101, 77



128, 115, 119



191, 0, 68



64, 0, 23

Inverse Universe

The Inverse Universe completely reimagines the original color for something new.



255, 77, 140



255, 41, 117



77, 231, 255



128, 115, 119



191, 0, 68



64, 0, 23

Previews

White Background



This preview shows how the RGB color 255, 77, 140 looks on a white background.

Color Contrast Check

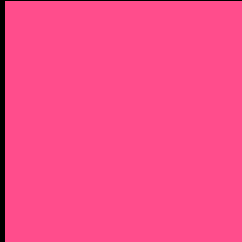
Large Text (above 18pt) WCAG AA ✓ Pass

Any Text WCAG AA ✗ Fail

Large Text (above 18pt) WCAG AAA ✗ Fail

Any Text WCAG AAA ✗ Fail

Black Background



This preview shows how the RGB color 255, 77, 140 looks on a black background.

Color Contrast Check

Large Text (above 18pt) WCAG AA ✓ Pass

Any Text WCAG AA ✓ Pass

Large Text (above 18pt) WCAG AAA ✓ Pass

Any Text WCAG AAA × Fail

If you want to check with other color combinations, try the [Color Contrast Checker](#).

RGB 255, 77, 140 Background



This preview shows how black text looks on a background with the RGB color 255, 77, 140.



This preview shows how white text looks on a background with the RGB color 255, 77, 140.

Color Blindness Simulation

Color vision deficiency is a very complex topic, and I could not describe the different causes any better than Wikipedia does, so if you want to learn more, you should check out their [article about color blindness](#).

Dichromacy



Original Color
255, 77, 140

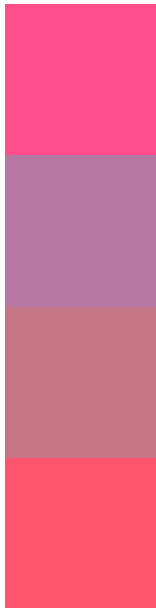
Protanopia
138, 144, 179

Deuteranopia
165, 140, 131



Tritanopia
252, 88, 93

Trichromacy



Original Color
255, 77, 140

Protanomaly
181, 120, 165

Deuteranomaly
198, 117, 134

Tritanomaly
253, 84, 110

Monochromacy



Original Color
255, 77, 140

Achromatopsia
137, 137, 137

Achromatomaly
180, 115, 138

CSS Examples

Text

The CSS property to change the color of the text to RGB 255, 77, 140 is called "color". The color property can be set on classes, ids or directly on the HTML element.

This example shows how text in the color `rgb(255, 77, 140)` looks like.

```
.text, #text, p{  
    color:rgb(255, 77, 140)  
}
```

If you want to add a text shadow in that color use the text-shadow property, you can generate a text shadow directly with our [CSS Text Shadow Generator](#).

Here you see how black text with a 4 pixel rgb(255, 77, 140) colored shadow looks like.

```
.shadow{ text-shadow: 4px 4px 2px rgb(255, 77, 140) }
```

Border

The CSS property to change the border of an element to RGB 255, 77, 140 is called "border". The border property can be set on classes, ids or directly on the HTML element.

This example shows the color as border, it can be applied via the CSS property "border" or "border-color".

```
.border, #border, table{ border:4px solid rgb(255, 77, 140) }
```

If only the border color should be changed use the property `border-color`.

```
.border{ border-color:rgb(255, 77, 140) }
```

If you want to add a box shadow in that color use:

Here you see how a box with a 4 pixel `rgb(255, 77, 140)` colored shadow looks like.

```
.boxshadow{ -moz-box-shadow:4px 4px 4px  
4px rgb(255, 77, 140); -webkit-box-  
shadow:4px 4px 4px 4px rgb(255, 77, 140);  
box-shadow:4px 4px 4px 4px rgb(255, 77,  
140) }
```

Background

The CSS property to change the background color of an element to RGB 255, 77, 140 is called "background". The background property can be set on classes, ids or directly on the HTML element.

```
.background, #background, body{  
background: rgb(255, 77, 140) }
```

If only the background color should be changed can be used:

```
.background{ background-color: rgb(255, 77,  
140) }
```

This example shows the color as background, it is applied via the CSS property "background".

To optimize and compress your CSS code, you can use our [online CSS compressor and optimizer](#) based on csstidy. If you want to create a linear or radial gradient as background or border, check our [CSS Gradient Generator](#).

Hey! You found this booklet interesting? Support Converting Colors with the new Membership Option!

The pro membership hides all ads, plus gives you double the colors in the color bucket, and more awesome pro features!

[Learn more, Memberships starting at \\$2.50/m!](#)

**Follow me
on Twitter!**

@ConvertingColor