

Converting Colors

RGB(255, 93, 129)

Have a look what the booklet for
RGB(255, 93, 129) contains.

RGB(255, 93, 129)	3
<i>Conversions</i>	4
<i>Details</i>	6
<i>Harmonies</i>	11
<i>Previews</i>	23
<i>Color Blindness Simulation</i>	26
<i>CSS Examples</i>	29

Color

RGB(255, 93, 129)

Conversions

Conversions Part 1

Format	Color
Hex	FF5D81
RGB	255, 93, 129
RGB Percent	100%, 36%, 51%
CMY	0.0000, 0.6353, 0.4941
CMYK	0.00, 0.64, 0.49, 0.00
HSL	347°, 100%, 68%
HSV	347°, 64%, 100%
XYZ	49.1168, 30.6737, 24.1007
YIQ	145.5420, 84.9960, 45.5400

Conversions

Conversions Part 2

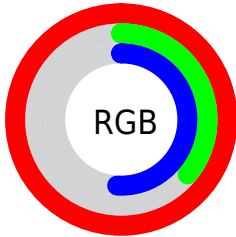
Format	Color
R _Y B	255, 93, 129
Decimal	16735617
CIE Lab	62.23, 64.03, 13.90
CIE LCh	62, 65.524, 12.247
Yxy	30.6737, 0.4728, 0.2952
Android (android.graphics.Color)	4294925697 (0xFFFF5D81)
YUV	145.5420, -8.1552, 95.9947
Hunter-Lab	55.3838, 61.3799, 12.9681

Details

The RGB color **255, 93, 129** is a light color, and the websafe version is hex **FF6699**. The color can be described as light muted rose. A complement of this color would be **93, 255, 219**, and the grayscale version is **146, 146, 146**.

A 20% lighter version of the original color is **255, 150, 182**, and **193, 26, 80** is the 20% darker color. If you saturate the color by 10%, you get **255, 67, 109**, and if you desaturate by 10%, it is **255, 119, 149**.

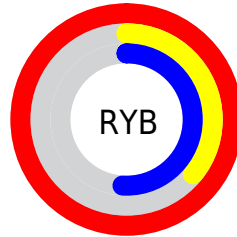
Distribution



Red (100%)

Green (36%)

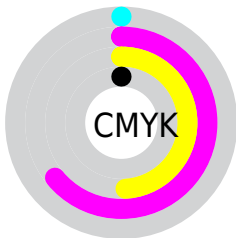
Blue (51%)



Red (100%)

Yellow (36%)

Blue (51%)

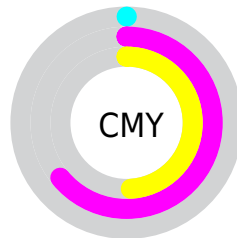


Cyan (0%)

Magenta (64%)

Yellow (49%)

Black (0%)



Cyan (0%)


Magenta (64%)

Yellow (49%)

Brightness & Saturation Gradients

These gradients show how the RGB color 255, 93, 129 changes by changing the brightness by 10 percent. The first figure shows a shift by +10% for each color and the second figure -10%.

Similar to the brightness gradients but the following saturation gradients show a change of the RGB color 255, 93, 129 by changing the saturation by 10% instead.

 255, 93, 129

 255, 93, 129

255, 255, 255

 224, 63, 104

 255, 150, 182

 193, 26, 80

 255, 179, 209

 162, 0, 58

 255, 208, 237

 132, 0, 36

 255, 238, 255

 102, 0, 16

 74, 0, 2

 43, 0, 1

 0, 0, 0

 255, 93, 129

 255, 93, 129

■ 255, 67, 109

■ 255, 119, 149

■ 255, 42, 89

■ 255, 144, 169

■ 255, 16, 69

■ 255, 170, 188

■ 255, 0, 57

■ 255, 195, 208

■ 255, 221, 228

■ 255, 246, 248

255, 255, 255

Harmonies

Analogous

The Analogous color harmony consists of three colors that are next to each other on the color wheel.



237, 100, 187



255, 93, 129



242, 110, 75

Triad

The Triadic color harmony groups three colors that are evenly spaced from another and form a triangle on the color wheel.



255, 93, 129



91, 168, 57



0, 166, 255

Complementary

The Complementary color scheme is a pair of colors which are on the opposite of each other on the color wheel.



255, 93, 129



93, 255, 219

Split Complementary

Split-complementary colors differ from the complementary color scheme. The scheme consists of three colors, the original color and two neighbors of the complement color.



0, 175, 227



255, 93, 129



0, 175, 113

Square

The Square scheme is like the rectangle color scheme, but the four colors are evenly spaced on the color wheel.



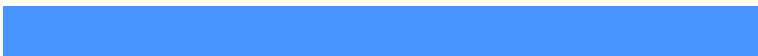
255, 93, 129



157, 155, 10



0, 178, 173



70, 149, 255

Rectangle

The Rectangle color scheme consists of four colors that form a rectangle on the color wheel.



255, 93, 129



221, 127, 43



0, 178, 173



0, 170, 253

Sweetspot

The Sweet Spot groups the original color and five complimentary colors.



255, 93, 129



255, 207, 217



217, 93, 255



128, 98, 105



0, 0, 0



128, 128, 128

Same Dimension

The Same Dimension uses a secret algorithm to generate beautiful new colors.



255, 93, 129



255, 61, 104



255, 136, 93



128, 115, 118



191, 0, 42



64, 0, 14

Inverse Universe

The Inverse Universe completely reimagines the original color for something new.



255, 93, 129



255, 61, 104



93, 212, 255



128, 115, 118



191, 0, 42



64, 0, 14

Previews

White Background



This preview shows how the RGB color 255, 93, 129 looks on a white background.

Color Contrast Check

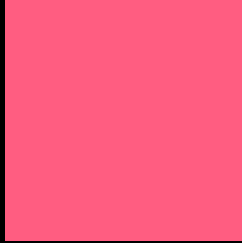
Large Text (above 18pt) WCAG AA × Fail

Any Text WCAG AA × Fail

Large Text (above 18pt) WCAG AAA × Fail

Any Text WCAG AAA × Fail

Black Background



This preview shows how the RGB color 255, 93, 129 looks on a black background.

Color Contrast Check

Large Text (above 18pt) WCAG AA ✓ Pass

Any Text WCAG AA ✓ Pass

Large Text (above 18pt) WCAG AAA ✓ Pass

Any Text WCAG AAA ✓ Pass

If you want to check with other color combinations, try the [Color Contrast Checker](#).

RGB 255, 93, 129 Background



This preview shows how black text looks on a background with the RGB color 255, 93, 129.

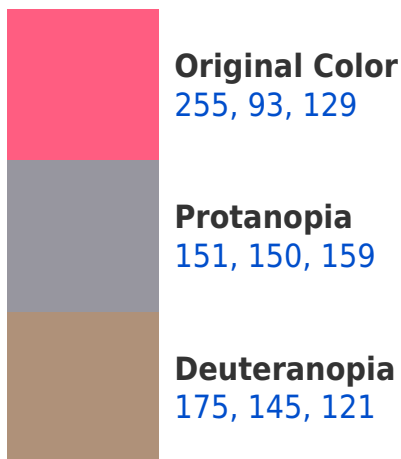


This preview shows how white text looks on a background with the RGB color 255, 93, 129.

Color Blindness Simulation

Color vision deficiency is a very complex topic, and I could not describe the different causes any better than Wikipedia does, so if you want to learn more, you should check out their [article about color blindness](#).

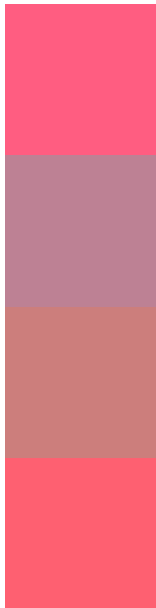
Dichromacy





Tritanopia
253, 98, 104

Trichromacy



Original Color
255, 93, 129

Protanomaly
189, 129, 148

Deuteranomaly
204, 126, 124

Tritanomaly
254, 96, 113

Monochromacy



Original Color
255, 93, 129

Achromatopsia
146, 146, 146

Achromatomaly
186, 127, 140

CSS Examples

Text

The CSS property to change the color of the text to RGB 255, 93, 129 is called "color". The color property can be set on classes, ids or directly on the HTML element.

This example shows how text in the color `rgb(255, 93, 129)` looks like.

```
.text, #text, p{  
    color:rgb(255, 93, 129)  
}
```

If you want to add a text shadow in that color use the text-shadow property, you can generate a text shadow directly with our [CSS Text Shadow Generator](#).

Here you see how black text with a 4 pixel rgb(255, 93, 129) colored shadow looks like.

```
.shadow{ text-shadow: 4px 4px 2px rgb(255, 93, 129) }
```

Border

The CSS property to change the border of an element to RGB 255, 93, 129 is called "border". The border property can be set on classes, ids or directly on the HTML element.

This example shows the color as border, it can be applied via the CSS property "border" or "border-color".

```
.border, #border, table{ border:4px solid rgb(255, 93, 129) }
```

If only the border color should be changed use the property border-color.

```
.border{ border-color:rgb(255, 93, 129) }
```

If you want to add a box shadow in that color use:

Here you see how a box with a 4 pixel rgb(255, 93, 129) colored shadow looks like.

```
.boxshadow{ -moz-box-shadow:4px 4px 4px  
4px rgb(255, 93, 129); -webkit-box-  
shadow:4px 4px 4px 4px rgb(255, 93, 129);  
box-shadow:4px 4px 4px 4px rgb(255, 93,  
129) }
```

Background

The CSS property to change the background color of an element to RGB 255, 93, 129 is called "background". The background property can be set on classes, ids or directly on the HTML element.

```
.background, #background, body{  
background: rgb(255, 93, 129) }
```

If only the background color should be changed can be used:

```
.background{ background-color: rgb(255, 93,  
129) }
```

This example shows the color as background, it is applied via the CSS property "background".

To optimize and compress your CSS code, you can use our [online CSS compressor and optimizer](#) based on csstidy. If you want to create a linear or radial gradient as background or border, check our [CSS Gradient Generator](#).

Hey! You found this booklet interesting? Support Converting Colors with the new Membership Option!

The pro membership hides all ads, plus gives you double the colors in the color bucket, and more awesome pro features!

[Learn more, Memberships starting at \\$2.50/m!](#)

**Follow me
on Twitter!**

@ConvertingColor