

Converting Colors

RGB(255, 93, 135)

Have a look what the booklet for
RGB(255, 93, 135) contains.

RGB(255, 93, 135)	3
<i>Conversions</i>	4
<i>Details</i>	6
<i>Harmonies</i>	11
<i>Previews</i>	23
<i>Color Blindness Simulation</i>	26
<i>CSS Examples</i>	29

Color

RGB(255, 93, 135)

Conversions

Conversions Part 1

Format	Color
Hex	FF5D87
RGB	255, 93, 135
RGB Percent	100%, 36%, 53%
CMY	0.0000, 0.6353, 0.4706
CMYK	0.00, 0.64, 0.47, 0.00
HSL	344°, 100%, 68%
HSV	344°, 64%, 100%
XYZ	49.5275, 30.8380, 26.2636
YIQ	146.2260, 83.0700, 47.4060

Conversions

Conversions Part 2

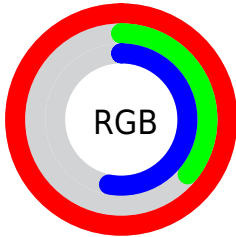
Format	Color
R _Y B	255, 93, 135
Decimal	16735623
CIE Lab	62.37, 64.55, 10.62
CIE LCh	62, 65.416, 9.347
Yxy	30.8380, 0.4645, 0.2892
Android (android.graphics.Color)	4294925703 (0xFFFF5D87)
YUV	146.2260, -5.5344, 95.3948
Hunter-Lab	55.5319, 62.0187, 10.8314

Details

The RGB color **255, 93, 135** is a light color, and the websafe version is hex **FF6699**. The color can be described as light muted rose. A complement of this color would be **93, 255, 213**, and the grayscale version is **146, 146, 146**.

A 20% lighter version of the original color is **255, 151, 188**, and **193, 26, 86** is the 20% darker color. If you saturate the color by 10%, you get **255, 67, 116**, and if you desaturate by 10%, it is **255, 119, 154**.

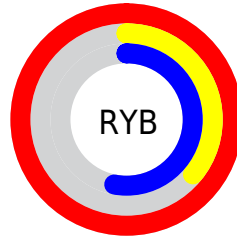
Distribution



Red (100%)

Green (36%)

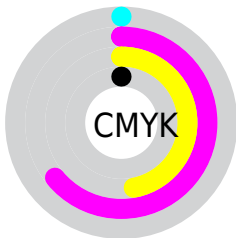
Blue (53%)



Red (100%)

Yellow (36%)

Blue (53%)

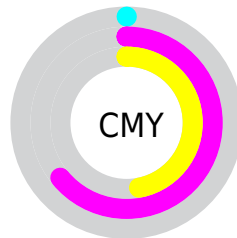


Cyan (0%)

Magenta (64%)

Yellow (47%)

Black (0%)



Cyan (0%)

Magenta (64%)

Yellow (47%)

Brightness & Saturation Gradients

These gradients show how the RGB color 255, 93, 135 changes by changing the brightness by 10 percent. The first figure shows a shift by +10% for each color and the second figure -10%.

Similar to the brightness gradients but the following saturation gradients show a change of the RGB color 255, 93, 135 by changing the saturation by 10% instead.



255, 93, 135



255, 93, 135

255, 255, 255



224, 63, 110



255, 151, 188



193, 26, 86



255, 179, 216



163, 0, 63



255, 209, 244



132, 0, 41



255, 238, 255



103, 0, 21



74, 0, 2



44, 0, 1



0, 0, 0



255, 93, 135



255, 93, 135

■ 255, 67, 116

■ 255, 119, 154

■ 255, 42, 97

■ 255, 144, 173

■ 255, 16, 78

■ 255, 170, 192

■ 255, 0, 66

■ 255, 195, 211

■ 255, 221, 229

■ 255, 246, 248

255, 255, 255

Harmonies

Analogous

The Analogous color harmony consists of three colors that are next to each other on the color wheel.



234, 102, 193



255, 93, 135



245, 109, 80

Triad

The Triadic color harmony groups three colors that are evenly spaced from another and form a triangle on the color wheel.



255, 93, 135



100, 168, 53



0, 168, 255

Complementary

The Complementary color scheme is a pair of colors which are on the opposite of each other on the color wheel.



255, 93, 135



93, 255, 213

Split Complementary

Split-complementary colors differ from the complementary color scheme. The scheme consists of three colors, the original color and two neighbors of the complement color.



0, 176, 223



255, 93, 135



0, 175, 107

Square

The Square scheme is like the rectangle color scheme, but the four colors are evenly spaced on the color wheel.



255, 93, 135



163, 154, 8



0, 178, 168



47, 152, 255

Rectangle

The Rectangle color scheme consists of four colors that form a rectangle on the color wheel.



255, 93, 135



225, 125, 48



0, 178, 168



0, 172, 250

Sweetspot

The Sweet Spot groups the original color and five complimentary colors.



255, 93, 135



255, 207, 219



212, 93, 255



128, 98, 106



0, 0, 0



128, 128, 128

Same Dimension

The Same Dimension uses a secret algorithm to generate beautiful new colors.



255, 93, 135



255, 61, 111



255, 131, 93



128, 115, 118



191, 0, 50



64, 0, 17

Inverse Universe

The Inverse Universe completely reimagines the original color for something new.



255, 93, 135



255, 61, 111



93, 217, 255



128, 115, 118



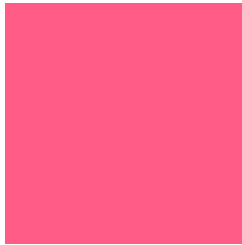
191, 0, 50



64, 0, 17

Previews

White Background



This preview shows how the RGB color 255, 93, 135 looks on a white background.

Color Contrast Check

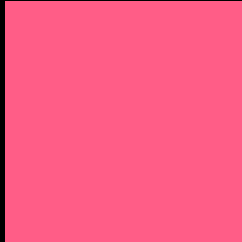
Large Text (above 18pt) WCAG AA × Fail

Any Text WCAG AA × Fail

Large Text (above 18pt) WCAG AAA × Fail

Any Text WCAG AAA × Fail

Black Background



This preview shows how the RGB color 255, 93, 135 looks on a black background.

Color Contrast Check

Large Text (above 18pt) WCAG AA ✓ Pass

Any Text WCAG AA ✓ Pass

Large Text (above 18pt) WCAG AAA ✓ Pass

Any Text WCAG AAA ✓ Pass

If you want to check with other color combinations, try the [Color Contrast Checker](#).

RGB 255, 93, 135 Background



This preview shows how black text looks on a background with the RGB color 255, 93, 135.



This preview shows how white text looks on a background with the RGB color 255, 93, 135.

Color Blindness Simulation

Color vision deficiency is a very complex topic, and I could not describe the different causes any better than Wikipedia does, so if you want to learn more, you should check out their [article about color blindness](#).

Dichromacy



Original Color
255, 93, 135

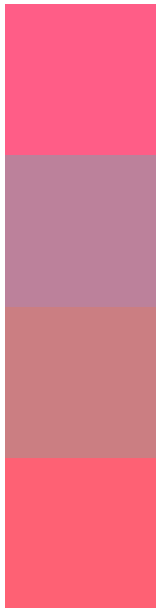
Protanopia
149, 150, 166

Deuteranopia
174, 145, 127



Tritanopia
253, 99, 105

Trichromacy



Original Color
255, 93, 135

Protanomaly
188, 129, 155

Deuteranomaly
203, 126, 130

Tritanomaly
254, 97, 116

Monochromacy



Original Color
255, 93, 135

Achromatopsia
146, 146, 146

Achromatomaly
186, 127, 142

CSS Examples

Text

The CSS property to change the color of the text to RGB 255, 93, 135 is called "color". The color property can be set on classes, ids or directly on the HTML element.

This example shows how text in the color `rgb(255, 93, 135)` looks like.

```
.text, #text, p{  
    color:rgb(255, 93, 135)  
}
```

If you want to add a text shadow in that color use the text-shadow property, you can generate a text shadow directly with our [CSS Text Shadow Generator](#).

Here you see how black text with a 4 pixel rgb(255, 93, 135) colored shadow looks like.

```
.shadow{ text-shadow: 4px 4px 2px rgb(255, 93, 135) }
```

Border

The CSS property to change the border of an element to RGB 255, 93, 135 is called "border". The border property can be set on classes, ids or directly on the HTML element.

This example shows the color as border, it can be applied via the CSS property "border" or "border-color".

```
.border, #border, table{ border:4px solid rgb(255, 93, 135) }
```

If only the border color should be changed use the property `border-color`.

```
.border{ border-color:rgb(255, 93, 135) }
```

If you want to add a box shadow in that color use:

Here you see how a box with a 4 pixel `rgb(255, 93, 135)` colored shadow looks like.

```
.boxshadow{ -moz-box-shadow:4px 4px 4px  
4px rgb(255, 93, 135); -webkit-box-  
shadow:4px 4px 4px 4px rgb(255, 93, 135);  
box-shadow:4px 4px 4px 4px rgb(255, 93,  
135) }
```

Background

The CSS property to change the background color of an element to RGB 255, 93, 135 is called "background". The background property can be set on classes, ids or directly on the HTML element.

```
.background, #background, body{  
background: rgb(255, 93, 135) }
```

If only the background color should be changed can be used:

```
.background{ background-color: rgb(255, 93,  
135) }
```

This example shows the color as background, it is applied via the CSS property "background".

To optimize and compress your CSS code, you can use our [online CSS compressor and optimizer](#) based on csstidy. If you want to create a linear or radial gradient as background or border, check our [CSS Gradient Generator](#).

Hey! You found this booklet interesting? Support Converting Colors with the new Membership Option!

The pro membership hides all ads, plus gives you double the colors in the color bucket, and more awesome pro features!

[Learn more, Memberships starting at \\$2.50/m!](#)

**Follow me
on Twitter!**

@ConvertingColor