

Converting Colors

RGB(255, 94, 143)

Have a look what the booklet for
RGB(255, 94, 143) contains.

RGB(255, 94, 143)	3
<i>Conversions</i>	4
<i>Details</i>	6
<i>Harmonies</i>	11
<i>Previews</i>	23
<i>Color Blindness Simulation</i>	26
<i>CSS Examples</i>	29

Color

RGB(255, 94, 143)

Conversions

Conversions Part 1

Format	Color
Hex	FF5E8F
RGB	255, 94, 143
RGB Percent	100%, 37%, 56%
CMY	0.0000, 0.6314, 0.4392
CMYK	0.00, 0.63, 0.44, 0.00
HSL	342°, 100%, 68%
HSV	342°, 63%, 100%
XYZ	50.2006, 31.2486, 29.3723
YIQ	147.7250, 80.2270, 49.3710

Conversions

Conversions Part 2

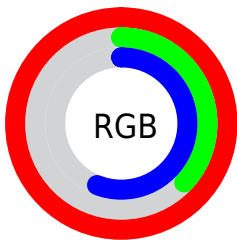
Format	Color
R_{YB}	255, 94, 143
Decimal	16735887
CIE _{Lab}	62.72, 64.87, 6.49
CIE _{LCh}	63, 65.193, 5.714
Yxy	31.2486, 0.4530, 0.2820
Android (android.graphics.Color)	4294925967 (0xFFFF5E8F)
YUV	147.7250, -2.3294, 94.0802
Hunter-Lab	55.9004, 62.4738, 7.9770

Details

The RGB color **255, 94, 143** is a light color, and the websafe version is hex **FF6699**. The color can be described as light muted rose. A complement of this color would be **94, 255, 206**, and the grayscale version is **148, 148, 148**.

A 20% lighter version of the original color is **255, 152, 197**, and **193, 27, 93** is the 20% darker color. If you saturate the color by 10%, you get **255, 69, 125**, and if you desaturate by 10%, it is **255, 120, 161**.

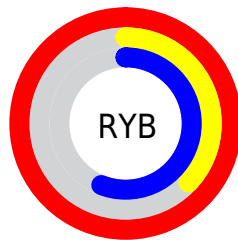
Distribution



Red (100%)

Green (37%)

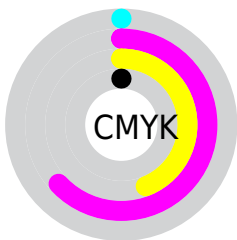
Blue (56%)



Red (100%)

Yellow (37%)

Blue (56%)

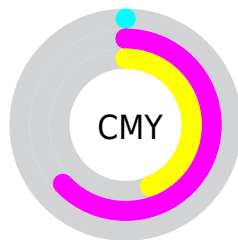


Cyan (0%)

Magenta (63%)

Yellow (44%)

Black (0%)



Cyan (0%)

Magenta (63%)

Yellow (44%)

Brightness & Saturation Gradients

These gradients show how the RGB color 255, 94, 143 changes by changing the brightness by 10 percent. The first figure shows a shift by +10% for each color and the second figure -10%.

Similar to the brightness gradients but the following saturation gradients show a change of the RGB color 255, 94, 143 by changing the saturation by 10% instead.



255, 94, 143



255, 94, 143

255, 255, 255



224, 64, 118



255, 152, 197



193, 27, 93



255, 180, 224



163, 0, 70



255, 210, 253



133, 0, 48



255, 239, 255



103, 0, 27



76, 0, 2



45, 0, 1



0, 0, 0



255, 94, 143



255, 94, 143

■ 255, 69, 125

■ 255, 120, 161

■ 255, 43, 108

■ 255, 145, 178

■ 255, 18, 90

■ 255, 171, 196

■ 255, 0, 78

■ 255, 196, 214

■ 255, 222, 232

■ 255, 247, 249

255, 255, 255

Harmonies

Analogous

The Analogous color harmony consists of three colors that are next to each other on the color wheel.



230, 106, 200



255, 94, 143



249, 107, 87

Triad

The Triadic color harmony groups three colors that are evenly spaced from another and form a triangle on the color wheel.



255, 94, 143



110, 167, 48



0, 170, 255

Complementary

The Complementary color scheme is a pair of colors which are on the opposite of each other on the color wheel.



255, 94, 143



94, 255, 206

Split Complementary

Split-complementary colors differ from the complementary color scheme. The scheme consists of three colors, the original color and two neighbors of the complement color.



0, 178, 218



255, 94, 143



0, 176, 101

Square

The Square scheme is like the rectangle color scheme, but the four colors are evenly spaced on the color wheel.



255, 94, 143



170, 153, 10



0, 179, 161



0, 155, 255

Rectangle

The Rectangle color scheme consists of four colors that form a rectangle on the color wheel.



255, 94, 143



230, 123, 55



0, 179, 161



0, 174, 247

Sweetspot

The Sweet Spot groups the original color and five complimentary colors.



255, 94, 143



255, 207, 221



204, 94, 255



128, 98, 107



0, 0, 0



128, 128, 128

Same Dimension

The Same Dimension uses a secret algorithm to generate beautiful new colors.



255, 94, 143



255, 61, 120



255, 124, 94



128, 115, 119



191, 0, 58



64, 0, 19

Inverse Universe

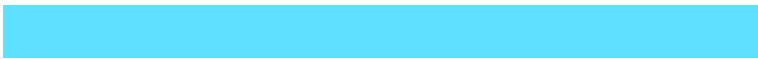
The Inverse Universe completely reimagines the original color for something new.



255, 94, 143



255, 61, 120



94, 225, 255



128, 115, 119



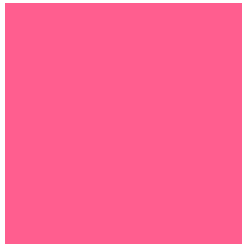
191, 0, 58



64, 0, 19

Previews

White Background



This preview shows how the RGB color 255, 94, 143 looks on a white background.

Color Contrast Check

Large Text (above 18pt) WCAG AA × Fail

Any Text WCAG AA × Fail

Large Text (above 18pt) WCAG AAA × Fail

Any Text WCAG AAA × Fail

Black Background



This preview shows how the RGB color 255, 94, 143 looks on a black background.

Color Contrast Check

Large Text (above 18pt) WCAG AA ✓ Pass

Any Text WCAG AA ✓ Pass

Large Text (above 18pt) WCAG AAA ✓ Pass

Any Text WCAG AAA ✓ Pass

If you want to check with other color combinations, try the [Color Contrast Checker](#).

RGB 255, 94, 143 Background



This preview shows how black text looks on a background with the RGB color 255, 94, 143.

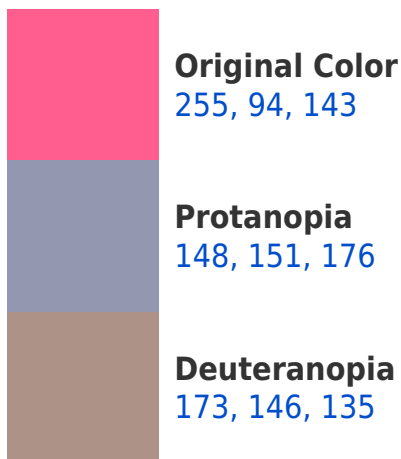


This preview shows how white text looks on a background with the RGB color 255, 94, 143.

Color Blindness Simulation

Color vision deficiency is a very complex topic, and I could not describe the different causes any better than Wikipedia does, so if you want to learn more, you should check out their [article about color blindness](#).

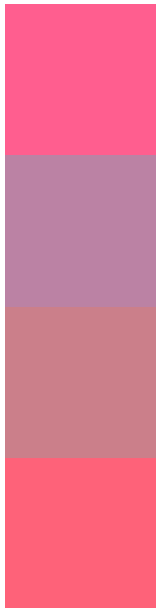
Dichromacy





Tritanopia
253, 101, 108

Trichromacy



Original Color
255, 94, 143

Protanomaly
187, 130, 164

Deuteranomaly
203, 127, 138

Tritanomaly
254, 98, 121

Monochromacy



Original Color
255, 94, 143

Achromatopsia
148, 148, 148

Achromatomaly
187, 128, 146

CSS Examples

Text

The CSS property to change the color of the text to RGB 255, 94, 143 is called "color". The color property can be set on classes, ids or directly on the HTML element.

This example shows how text in the color `rgb(255, 94, 143)` looks like.

```
.text, #text, p{  
    color:rgb(255, 94, 143)  
}
```

If you want to add a text shadow in that color use the text-shadow property, you can generate a text shadow directly with our [CSS Text Shadow Generator](#).

Here you see how black text with a 4 pixel rgb(255, 94, 143) colored shadow looks like.

```
.shadow{ text-shadow: 4px 4px 2px rgb(255, 94, 143) }
```

Border

The CSS property to change the border of an element to RGB 255, 94, 143 is called "border". The border property can be set on classes, ids or directly on the HTML element.

This example shows the color as border, it can be applied via the CSS property "border" or "border-color".

```
.border, #border, table{ border:4px solid rgb(255, 94, 143) }
```

If only the border color should be changed use the property `border-color`.

```
.border{ border-color:rgb(255, 94, 143) }
```

If you want to add a box shadow in that color use:

Here you see how a box with a 4 pixel `rgb(255, 94, 143)` colored shadow looks like.

```
.boxshadow{ -moz-box-shadow:4px 4px 4px  
4px rgb(255, 94, 143); -webkit-box-  
shadow:4px 4px 4px 4px rgb(255, 94, 143);  
box-shadow:4px 4px 4px 4px rgb(255, 94,  
143) }
```

Background

The CSS property to change the background color of an element to RGB 255, 94, 143 is called "background". The background property can be set on classes, ids or directly on the HTML element.

```
.background, #background, body{  
background: rgb(255, 94, 143) }
```

If only the background color should be changed can be used:

```
.background{ background-color: rgb(255, 94,  
143) }
```

This example shows the color as background, it is applied via the CSS property "background".

To optimize and compress your CSS code, you can use our [online CSS compressor and optimizer](#) based on csstidy. If you want to create a linear or radial gradient as background or border, check our [CSS Gradient Generator](#).

Hey! You found this booklet interesting? Support Converting Colors with the new Membership Option!

The pro membership hides all ads, plus gives you double the colors in the color bucket, and more awesome pro features!

[Learn more, Memberships starting at \\$2.50/m!](#)

**Follow me
on Twitter!**

@ConvertingColor