

Converting Colors

`RYB(144, 119, 90)`

Have a look what the booklet for
RYB(144, 119, 90) contains.

RYB(144, 119, 90)	3
<i>Conversions</i>	4
<i>Details</i>	6
<i>Harmonies</i>	11
<i>Previews</i>	23
<i>Color Blindness Simulation</i>	26
<i>CSS Examples</i>	29

Color

$\text{RYB}(144, 119, 90)$

Conversions

Conversions Part 1

Format	Color
Hex	906D5A
RGB	144, 109, 90
RGB Percent	56%, 43%, 35%
CMY	0.4353, 0.5731, 0.6471
CMYK	0.00, 0.24, 0.37, 0.44
HSL	21°, 23%, 46%
HSV	21°, 37%, 56%
XYZ	18.8016, 17.5765, 12.0745
YIQ	117.2990, 26.9590, 1.5110

Conversions

Conversions Part 2

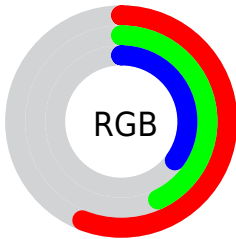
Format	Color
R_{YB}	144, 119, 90
Decimal	9465178
CIE _{Lab}	48.98, 11.25, 15.94
CIE _{LCh}	49, 19.515, 54.786
Yxy	17.5765, 0.3880, 0.3628
Android (android.graphics.Color)	4287655258 (0xFF906D5A)
YUV	117.2990, -13.4584, 23.4168
Hunter-Lab	41.9243, 6.6833, 12.2711

Details

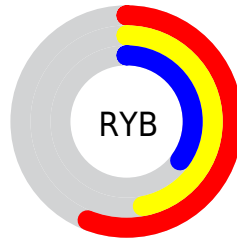
The RYB color **144, 119, 90** is a dark color, and the websafe version is hex **996666**. A complement of this color would be **90, 111, 144**, and the grayscale version is **117, 117, 117**.

A 20% lighter version of the original color is **199, 173, 140**, and **92, 70, 44** is the 20% darker color. If you saturate the color by 10%, you get **144, 111, 76**, and if you desaturate by 10%, it is **144, 126, 104**.

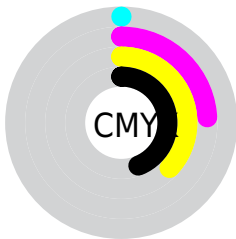
Distribution



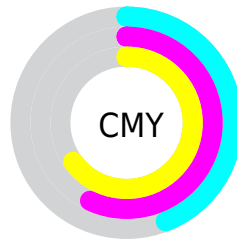
- Red (56%)
- Green (43%)
- Blue (35%)



- Red (56%)
- Yellow (47%)
- Blue (35%)



- Cyan (0%)
- Magenta (24%)
- Yellow (37%)
- Black (44%)



- Cyan (44%)
- Magenta (57%)
- Yellow (65%)

Brightness & Saturation Gradients


These gradients show how the RYB color 144, 119, 90 changes by changing the brightness by 10 percent. The first figure shows a shift by +10% for each color and the second figure -10%.

Similar to the brightness gradients but the following saturation gradients show a change of the RYB color 144, 119, 90 by changing the saturation by 10% instead.

 144, 119, 90  144, 119, 90

255, 255, 255  118, 96, 66

 199, 170, 140  92, 70, 44


 227, 197, 167  67, 48, 23

 255, 226, 194  45, 33, 0

 239, 255, 222  17, 0, 0

 250, 255, 250  0, 0, 0

 144, 119, 90  144, 119, 90

 144, 111, 76  144, 126, 104

 144, 106, 61  144, 133, 119

■ 144, 99, 47

■ 144, 139, 133

■ 144, 92, 32

■ 144, 145, 148

■ 144, 86, 18

■ 144, 151, 162

■ 144, 79, 4

■ 144, 157, 176

■ 144, 77, 0

■ 144, 162, 191

■ 144, 168, 205

■ 144, 174, 220

Harmonies

Analogous

The Analogous color harmony consists of three colors that are next to each other on the color wheel.



150, 105, 103



144, 119, 90



111, 131, 84

Triad

The Triadic color harmony groups three colors that are evenly spaced from another and form a triangle on the color wheel.



144, 119, 90



77, 104, 125



115, 113, 146

Complementary

The Complementary color scheme is a pair of colors which are on the opposite of each other on the color wheel.



144, 119, 90



90, 111, 144

Split Complementary

Split-complementary colors differ from the complementary color scheme. The scheme consists of three colors, the original color and two neighbors of the complement color.



92, 110, 149



144, 119, 90



67, 97, 130

Square

The Square scheme is like the rectangle color scheme, but the four colors are evenly spaced on the color wheel.



144, 119, 90



95, 121, 123



73, 102, 143



135, 108, 136

Rectangle

The Rectangle color scheme consists of four colors that form a rectangle on the color wheel.



144, 119, 90



86, 120, 84



73, 102, 143



107, 114, 148

Sweetspot

The Sweet Spot groups the original color and five complimentary colors.



144, 119, 90



186, 177, 166



144, 90, 126



94, 88, 82



222, 222, 222



94, 94, 94

Same Dimension

The Same Dimension uses a secret algorithm to generate beautiful new colors.



144, 119, 90



186, 149, 102



101, 144, 90



71, 69, 64



135, 72, 0



8, 5, 0

Inverse Universe

The Inverse Universe completely reimagines the original color for something new.



90, 111, 144



102, 135, 186



90, 98, 144



64, 67, 71



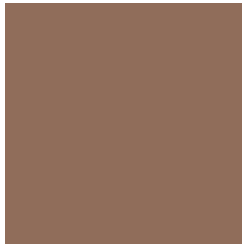
0, 53, 135



0, 3, 8

Previews

White Background



This preview shows how the RYB color 144, 119, 90 looks on a white background.

Color Contrast Check

Large Text (above 18pt) WCAG AA ✓ Pass

Any Text WCAG AA ✓ Pass

Large Text (above 18pt) WCAG AAA ✓ Pass

Any Text WCAG AAA × Fail

Black Background



This preview shows how the RYB color 144, 119, 90 looks on a black background.

Color Contrast Check

Large Text (above 18pt) WCAG AA ✓ Pass

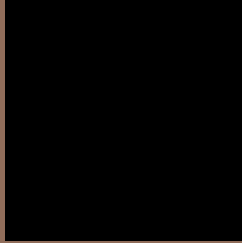
Any Text WCAG AA ✓ Pass

Large Text (above 18pt) WCAG AAA ✓ Pass

Any Text WCAG AAA × Fail

If you want to check with other color combinations, try the [Color Contrast Checker](#).

R Y B 144, 119, 90 Background



This preview shows how black text looks on a background with the RYB color 144, 119, 90.



This preview shows how white text looks on a background with the RYB color 144, 119, 90.

Color Blindness Simulation

Color vision deficiency is a very complex topic, and I could not describe the different causes any better than Wikipedia does, so if you want to learn more, you should check out their [article about color blindness](#).

Dichromacy



Original Color


144, 119, 90

Protanopia

104, 124, 93

Deuteranopia

137, 133, 89



Tritanopia
146, 106, 114

Trichromacy



Original Color

144, 119, 90

Protanomaly

125, 131, 92

Deuteranomaly

140, 128, 89

Tritanomaly

145, 107, 105

Monochromacy



Original Color

144, 119, 90

Achromatopsia

117, 117, 117

Achromatomaly

127, 118, 107

CSS Examples

Text

The CSS property to change the color of the text to RYB 144, 119, 90 is called "color". The color property can be set on classes, ids or directly on the HTML element.

This example shows how text in the color `rgb(144, 109, 90)` looks like.

```
.text, #text, p{  
    color:rgb(144, 109, 90)  
}
```

If you want to add a text shadow in that color use the text-shadow property, you can generate a text shadow directly with our [CSS Text Shadow Generator](#).

Here you see how black text with a 4 pixel rgb(144, 109, 90) colored shadow looks like.

```
.shadow{ text-shadow: 4px 4px 2px rgb(144, 109, 90) }
```

Border

The CSS property to change the border of an element to RYB 144, 119, 90 is called "border". The border property can be set on classes, ids or directly on the HTML element.

This example shows the color as border, it can be applied via the CSS property "border" or "border-color".

```
.border, #border, table{ border:4px solid rgb(144, 109, 90) }
```

If only the border color should be changed use the property `border-color`.

```
.border{ border-color:rgb(144, 109, 90) }
```

If you want to add a box shadow in that color use:

Here you see how a box with a 4 pixel `rgb(144, 109, 90)` colored shadow looks like.

```
.boxshadow{ -moz-box-shadow:4px 4px 4px  
4px rgb(144, 109, 90); -webkit-box-  
shadow:4px 4px 4px 4px rgb(144, 109, 90);  
box-shadow:4px 4px 4px 4px rgb(144, 109,  
90) }
```

Background

The CSS property to change the background color of an element to RYB 144, 119, 90 is called "background". The background property can be set on classes, ids or directly on the HTML element.

```
.background, #background, body{  
background: rgb(144, 109, 90) }
```

If only the background color should be changed can be used:

```
.background{ background-color: rgb(144,  
109, 90) }
```

This example shows the color as background, it is applied via the CSS property "background".

To optimize and compress your CSS code, you can use our [online CSS compressor and optimizer](#) based on csstidy. If you want to create a linear or radial gradient as background or border, check our [CSS Gradient Generator](#).

Hey! You found this booklet interesting? Support Converting Colors with the new Membership Option!

The pro membership hides all ads, plus gives you double the colors in the color bucket, and more awesome pro features!

[Learn more, Memberships starting at \\$2.50/m!](#)

**Follow me
on Twitter!**

@ConvertingColor