

# Converting Colors

`RYB(154, 143, 98)`

Have a look what the booklet for  
RYB(154, 143, 98) contains.

<b>RYB(154, 143, 98)</b> .....	3
<i><b>Conversions</b></i> .....	4
<i><b>Details</b></i> .....	6
<i><b>Harmonies</b></i> .....	11
<i><b>Previews</b></i> .....	23
<i><b>Color Blindness Simulation</b></i> .....	26
<i><b>CSS Examples</b></i> .....	29

# Color

**R<sub>Y</sub>B(154, 143, 98)**

# Conversions

## Conversions Part 1

<b>Format</b>	<b>Color</b>
Hex	9A7B62
RGB	154, 123, 98
RGB Percent	60%, 48%, 38%
CMY	0.3961, 0.5178, 0.6157
CMYK	0.00, 0.20, 0.36, 0.40
HSL	27°, 22%, 49%
HSV	27°, 36%, 60%
XYZ	22.6078, 21.9055, 14.5919
YIQ	129.4190, 26.5010, -1.2030

# Conversions

## Conversions Part 2

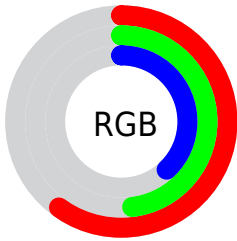
<b>Format</b>	<b>Color</b>
<b>RYB</b>	154, 143, 98
Decimal	10124130
CIELab	53.93, 8.39, 18.21
CIELCh	54, 20.054, 65.271
Yxy	21.9055, 0.3825, 0.3706
Android (android.graphics.Color)	4288314210 (0xFF9A7B62)
YUV	129.4190, -15.4896, 21.5575
Hunter-Lab	46.8033, 4.3167, 14.2774

# Details

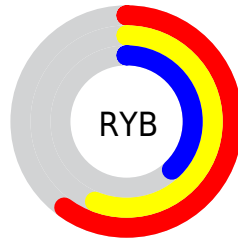
The RYB color **154, 143, 98** is a dark color, and the websafe version is hex **996666**. A complement of this color would be **98, 118, 154**, and the grayscale version is **130, 130, 130**.

A 20% lighter version of the original color is **209, 195, 149**, and **102, 93, 51** is the 20% darker color. If you saturate the color by 10%, you get **154, 138, 83**, and if you desaturate by 10%, it is **154, 145, 113**.

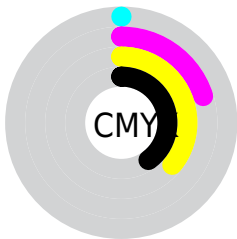
# Distribution



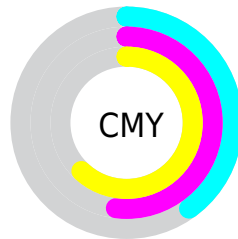
- Red (60%)
- Green (48%)
- Blue (38%)



- Red (60%)
- Yellow (56%)
- Blue (38%)



- Cyan (0%)
- Magenta (20%)
- Yellow (36%)
- Black (40%)



- Cyan (40%)
- Magenta (52%)
- Yellow (62%)

# Brightness & Saturation Gradients

These gradients show how the RYB color 154, 143, 98 changes by changing the brightness by 10 percent. The first figure shows a shift by +10% for each color and the second figure -10%.

Similar to the brightness gradients but the following saturation gradients show a change of the RYB color 154, 143, 98 by changing the saturation by 10% instead.





154, 143, 98



154, 143, 98

255, 255, 255



127, 118, 74



209, 195, 149



102, 93, 51



238, 224, 176



77, 71, 30



248, 255, 203



51, 53, 6



231, 255, 231



31, 9, 0



0, 0, 0



154, 143, 98



154, 143, 98



154, 138, 83



154, 145, 113



154, 138, 67



154, 149, 129

■ 154, 133, 52

■ 154, 154, 144

■ 154, 132, 36

■ 154, 156, 160

■ 154, 127, 21

■ 154, 162, 175

■ 154, 125, 6

■ 154, 167, 190

■ 154, 125, 0

■ 154, 173, 206

■ 154, 178, 221

■ 154, 184, 237

# Harmonies

## Analogous

The Analogous color harmony consists of three colors that are next to each other on the color wheel.



163, 119, 110



154, 143, 98



107, 139, 94

# Triad

The Triadic color harmony groups three colors that are evenly spaced from another and form a triangle on the color wheel.



154, 143, 98



84, 114, 139



136, 123, 157

# Complementary

The Complementary color scheme is a pair of colors which are on the opposite of each other on the color wheel.



154, 143, 98



98, 118, 154

# Split Complementary

Split-complementary colors differ from the complementary color scheme. The scheme consists of three colors, the original color and two neighbors of the complement color.



112, 125, 163



154, 143, 98



79, 111, 148

# Square

The Square scheme is like the rectangle color scheme, but the four colors are evenly spaced on the color wheel.



154, 143, 98



100, 127, 137



90, 117, 160



154, 118, 144

# Rectangle

The Rectangle color scheme consists of four colors that form a rectangle on the color wheel.



154, 143, 98



97, 132, 103



90, 117, 160



128, 125, 160



# Sweetspot

The Sweet Spot groups the original color and five complimentary colors.



154, 143, 98



201, 197, 179



154, 98, 130



102, 100, 89



230, 230, 230



102, 102, 102



# Same Dimension

The Same Dimension uses a secret algorithm to generate beautiful new colors.



154, 143, 98



201, 183, 113



102, 154, 98



77, 74, 69



140, 111, 0



13, 11, 0



# Inverse Universe

The Inverse Universe completely reimagines the original color for something new.



98, 118, 154



113, 144, 201



98, 102, 154



69, 72, 77



0, 50, 140

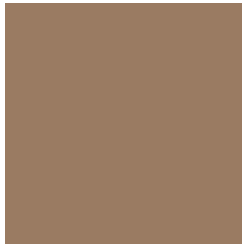


0, 5, 13



# Previews

## White Background



This preview shows how the RYB color 154, 143, 98 looks on a white background.

## Color Contrast Check

Large Text (above 18pt) WCAG AA ✓ Pass

Any Text WCAG AA ✗ Fail

Large Text (above 18pt) WCAG AAA ✗ Fail

Any Text WCAG AAA ✗ Fail

# Black Background



This preview shows how the RYB color 154, 143, 98 looks on a black background.

## Color Contrast Check

Large Text (above 18pt) WCAG AA ✓ Pass

Any Text WCAG AA ✓ Pass

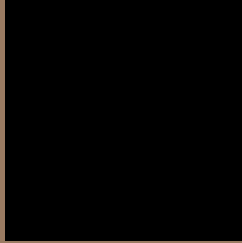
Large Text (above 18pt) WCAG AAA ✓ Pass

Any Text WCAG AAA × Fail

If you want to check with other color combinations, try the [Color Contrast Checker](#).



## R Y B 154, 143, 98 Background



This preview shows how black text looks on a background with the RYB color 154, 143, 98.



This preview shows how white text looks on a background with the RYB color 154, 143, 98.

# Color Blindness Simulation

Color vision deficiency is a very complex topic, and I could not describe the different causes any better than Wikipedia does, so if you want to learn more, you should check out their [article about color blindness](#).


## Dichromacy



**Original Color**  
[154, 143, 98](#)

**Protanopia**  
[113, 138, 101](#)

**Deuteranopia**  
[152, 148, 98](#)



**Tritanopia**  
157, 119, 128

# Trichromacy



**Original Color**

154, 143, 98

**Protanomaly**

128, 144, 100

**Deuteranomaly**

153, 147, 98

**Tritanomaly**

156, 120, 117

# Monochromacy



**Original Color**

154, 143, 98

**Achromatopsia**

129, 129, 129

**Achromatomaly**

138, 134, 118

# CSS Examples

## Text

The CSS property to change the color of the text to RYB 154, 143, 98 is called "color". The color property can be set on classes, ids or directly on the HTML element.

This example shows how text in the color `rgb(154, 123, 98)` looks like.

```
.text, #text, p{  
    color:rgb(154, 123, 98)  
}
```

If you want to add a text shadow in that color use the text-shadow property, you can generate a text shadow directly with our [CSS Text Shadow Generator](#).

Here you see how black text with a 4 pixel rgb(154, 123, 98) colored shadow looks like.

```
.shadow{ text-shadow: 4px 4px 2px rgb(154, 123, 98) }
```

## Border

The CSS property to change the border of an element to RYB 154, 143, 98 is called "border". The border property can be set on classes, ids or directly on the HTML element.

This example shows the color as border, it can be applied via the CSS property "border" or "border-color".

```
.border, #border, table{ border:4px solid rgb(154, 123, 98) }
```

If only the border color should be changed use the property `border-color`.

```
.border{ border-color:rgb(154, 123, 98) }
```

If you want to add a box shadow in that color use:

Here you see how a box with a 4 pixel `rgb(154, 123, 98)` colored shadow looks like.

```
.boxshadow{ -moz-box-shadow:4px 4px 4px  
4px rgb(154, 123, 98); -webkit-box-  
shadow:4px 4px 4px 4px rgb(154, 123, 98);  
box-shadow:4px 4px 4px 4px rgb(154, 123,  
98) }
```

# Background

The CSS property to change the background color of an element to RYB 154, 143, 98 is called "background".

The background property can be set on classes, ids or directly on the HTML element.

```
.background, #background, body{  
background: rgb(154, 123, 98) }
```

If only the background color should be changed can be used:

```
.background{ background-color: rgb(154,  
123, 98) }
```

This example shows the color as background, it is applied via the CSS property "background".

To optimize and compress your CSS code, you can use our [online CSS compressor and optimizer](#) based on csstidy. If you want to create a linear or radial gradient as background or border, check our [CSS Gradient Generator](#).



Hey! You found this booklet interesting? Support Converting Colors with the new Membership Option!

The pro membership hides all ads, plus gives you double the colors in the color bucket, and more awesome pro features!

**[Learn more, Memberships starting at \\$2.50/m!](#)**

**Follow me  
on Twitter!**

@ConvertingColor