

Converting Colors

`RYB(157, 113, 82)`

Have a look what the booklet for
RYB(157, 113, 82) contains.

RYB(157, 113, 82)	3
<i>Conversions</i>	4
<i>Details</i>	6
<i>Harmonies</i>	11
<i>Previews</i>	23
<i>Color Blindness Simulation</i>	26
<i>CSS Examples</i>	29

Color

`RYB(157, 113, 82)`

Conversions

Conversions Part 1

Format	Color
Hex	9D6852
RGB	157, 104, 82
RGB Percent	62%, 41%, 32%
CMY	0.3843, 0.5924, 0.6784
CMYK	0.00, 0.34, 0.48, 0.38
HSL	18°, 31%, 47%
HSV	18°, 48%, 62%
XYZ	20.3713, 17.6646, 10.3186
YIQ	117.3390, 38.6500, 4.3940

Conversions

Conversions Part 2

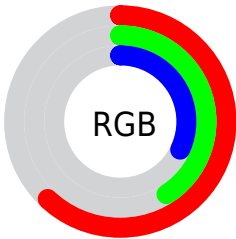
Format	Color
R_{YB}	157, 113, 82
Decimal	10315858
CIE _{Lab}	49.09, 18.68, 21.04
CIE _{LCh}	49, 28.131, 48.397
Yxy	17.6646, 0.4213, 0.3653
Android (android.graphics.Color)	4288505938 (0xFF9D6852)
YUV	117.3390, -17.4221, 34.7827
Hunter-Lab	42.0293, 12.9663, 14.8643

Details

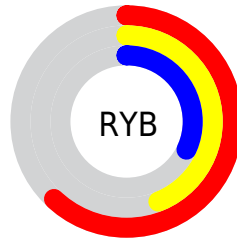
The RYB color **157, 113, 82** is a dark color, and the websafe version is hex **996666**. A complement of this color would be **82, 113, 157**, and the grayscale version is **117, 117, 117**.

A 20% lighter version of the original color is **214, 164, 132**, and **103, 64, 37** is the 20% darker color. If you saturate the color by 10%, you get **157, 104, 66**, and if you desaturate by 10%, it is **157, 122, 98**.

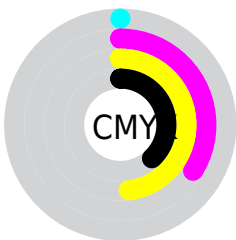
Distribution



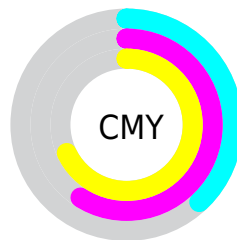
- Red (62%)
- Green (41%)
- Blue (32%)



- Red (62%)
- Yellow (44%)
- Blue (32%)



- Cyan (0%)
- Magenta (34%)
- Yellow (48%)
- Black (38%)



- Cyan (38%)
- Magenta (59%)
- Yellow (68%)

Brightness & Saturation Gradients

These gradients show how the RYB color 157, 113, 82 changes by changing the brightness by 10 percent. The first figure shows a shift by +10% for each color and the second figure -10%.

Similar to the brightness gradients but the following saturation gradients show a change of the RYB color 157, 113, 82 by changing the saturation by 10% instead.

 157, 113, 82  157, 113, 82

255, 255, 255  130, 89, 59

 214, 164, 132  103, 64, 37

 243, 191, 158  77, 42, 16

 255, 224, 185  52, 17, 0

 240, 255, 212  28, 0, 1

 241, 255, 241  0, 0, 0

 157, 113, 82  157, 113, 82

 157, 104, 66  157, 122, 98

 157, 95, 51  157, 131, 113

■ 157, 86, 35

■ 157, 140, 129

■ 157, 77, 19

■ 157, 149, 145

■ 157, 67, 3

■ 157, 158, 161

■ 157, 65, 0

■ 157, 165, 176

■ 157, 172, 192

■ 157, 178, 208

■ 157, 184, 223

Harmonies

Analogous

The Analogous color harmony consists of three colors that are next to each other on the color wheel.



163, 99, 103



157, 113, 82



119, 141, 70

Triad

The Triadic color harmony groups three colors that are evenly spaced from another and form a triangle on the color wheel.



157, 113, 82



60, 101, 129



106, 113, 162

Complementary

The Complementary color scheme is a pair of colors which are on the opposite of each other on the color wheel.



157, 113, 82



82, 113, 157

Split Complementary

Split-complementary colors differ from the complementary color scheme. The scheme consists of three colors, the original color and two neighbors of the complement color.



66, 102, 163



157, 113, 82



27, 78, 131

Square

The Square scheme is like the rectangle color scheme, but the four colors are evenly spaced on the color wheel.



157, 113, 82



84, 126, 119



26, 82, 152



137, 105, 148

Rectangle

The Rectangle color scheme consists of four colors that form a rectangle on the color wheel.



157, 113, 82



80, 126, 69



26, 82, 152



93, 111, 164

Sweetspot

The Sweet Spot groups the original color and five complimentary colors.



157, 113, 82



204, 188, 175



157, 82, 136



102, 92, 85



230, 230, 230



102, 102, 102

Same Dimension

The Same Dimension uses a secret algorithm to generate beautiful new colors.



157, 113, 82



204, 136, 88



102, 157, 82



79, 74, 71



143, 59, 0



15, 5, 0

Inverse Universe

The Inverse Universe completely reimagines the original color for something new.



82, 113, 157



88, 136, 204



82, 95, 157



71, 74, 79



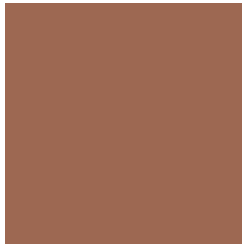
0, 59, 143



0, 6, 15

Previews

White Background



This preview shows how the RYB color 157, 113, 82 looks on a white background.

Color Contrast Check

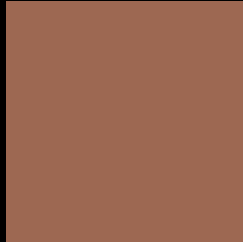
Large Text (above 18pt) WCAG AA ✓ Pass

Any Text WCAG AA ✓ Pass

Large Text (above 18pt) WCAG AAA ✓ Pass

Any Text WCAG AAA × Fail

Black Background



This preview shows how the RYB color 157, 113, 82 looks on a black background.

Color Contrast Check

Large Text (above 18pt) WCAG AA ✓ Pass

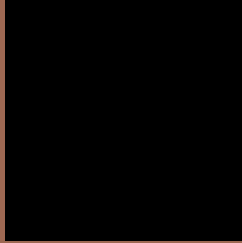
Any Text WCAG AA ✓ Pass

Large Text (above 18pt) WCAG AAA ✓ Pass

Any Text WCAG AAA × Fail

If you want to check with other color combinations, try the [Color Contrast Checker](#).

R Y B 157, 113, 82 Background



This preview shows how black text looks on a background with the RYB color 157, 113, 82.



This preview shows how white text looks on a background with the RYB color 157, 113, 82.

Color Blindness Simulation

Color vision deficiency is a very complex topic, and I could not describe the different causes any better than Wikipedia does, so if you want to learn more, you should check out their [article about color blindness](#).

Dichromacy



Original Color

157, 113, 82

Protanopia

98, 125, 88

Deuteranopia

133, 140, 80



Tritanopia
159, 100, 108

Trichromacy



Original Color

157, 113, 82

Protanomaly

135, 137, 86

Deuteranomaly

146, 130, 81

Tritanomaly

158, 101, 99

Monochromacy



Original Color

157, 113, 82

Achromatopsia

117, 117, 117

Achromatomaly

132, 115, 104

CSS Examples

Text

The CSS property to change the color of the text to RYB 157, 113, 82 is called "color". The color property can be set on classes, ids or directly on the HTML element.

This example shows how text in the color `rgb(157, 104, 82)` looks like.

```
.text, #text, p{  
    color:rgb(157, 104, 82)  
}
```

If you want to add a text shadow in that color use the text-shadow property, you can generate a text shadow directly with our [CSS Text Shadow Generator](#).

Here you see how black text with a 4 pixel rgb(157, 104, 82) colored shadow looks like.

```
.shadow{ text-shadow: 4px 4px 2px rgb(157, 104, 82) }
```

Border

The CSS property to change the border of an element to RYB 157, 113, 82 is called "border". The border property can be set on classes, ids or directly on the HTML element.

This example shows the color as border, it can be applied via the CSS property "border" or "border-color".

```
.border, #border, table{ border:4px solid rgb(157, 104, 82) }
```

If only the border color should be changed use the property border-color.

```
.border{ border-color:rgb(157, 104, 82) }
```

If you want to add a box shadow in that color use:

Here you see how a box with a 4 pixel rgb(157, 104, 82) colored shadow looks like.

```
.boxshadow{ -moz-box-shadow:4px 4px 4px  
4px rgb(157, 104, 82); -webkit-box-  
shadow:4px 4px 4px 4px rgb(157, 104, 82);  
box-shadow:4px 4px 4px 4px rgb(157, 104,  
82) }
```

Background

The CSS property to change the background color of an element to RYB 157, 113, 82 is called "background".

The background property can be set on classes, ids or directly on the HTML element.

```
.background, #background, body{  
background: rgb(157, 104, 82) }
```

If only the background color should be changed can be used:

```
.background{ background-color: rgb(157,  
104, 82) }
```

This example shows the color as background, it is applied via the CSS property "background".

To optimize and compress your CSS code, you can use our [online CSS compressor and optimizer](#) based on csstidy. If you want to create a linear or radial gradient as background or border, check our [CSS Gradient Generator](#).

Hey! You found this booklet interesting? Support Converting Colors with the new Membership Option!

The pro membership hides all ads, plus gives you double the colors in the color bucket, and more awesome pro features!

[Learn more, Memberships starting at \\$2.50/m!](#)

**Follow me
on Twitter!**

@ConvertingColor