

Converting Colors

`RYB(158, 164, 117)`

Have a look what the booklet for
RYB(158, 164, 117) contains.

RYB(158, 164, 117)	3
<i>Conversions</i>	4
<i>Details</i>	6
<i>Harmonies</i>	11
<i>Previews</i>	23
<i>Color Blindness Simulation</i>	26
<i>CSS Examples</i>	29

Color

R_YB(158, 164, 117)

Conversions

Conversions Part 1

Format	Color
Hex	A48E75
RGB	164, 142, 117
RGB Percent	64%, 56%, 46%
CMY	0.3569, 0.4427, 0.5412
CMYK	0.00, 0.13, 0.29, 0.36
HSL	32°, 21%, 55%
HSV	32°, 29%, 64%
XYZ	28.2090, 28.5533, 20.8542
YIQ	145.7280, 21.1370, -3.1110

Conversions

Conversions Part 2

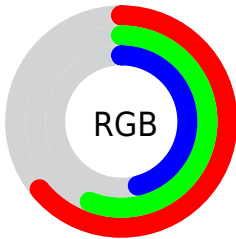
Format	Color
RYB	158, 164, 117
Decimal	10784373
CIELab	60.39, 4.27, 16.41
CIELCh	60, 16.960, 75.415
Yxy	28.5533, 0.3634, 0.3679
Android (android.graphics.Color)	4288974453 (0xFFA48E75)
YUV	145.7280, -14.1629, 16.0245
Hunter-Lab	53.4353, 0.7199, 14.2656

Details

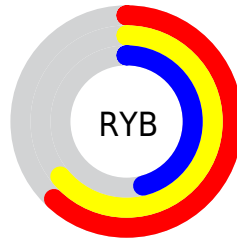
The RYB color **158, 164, 117** is a dark color, and the websafe version is hex **999966**. A complement of this color would be **117, 132, 164**, and the grayscale version is **146, 146, 146**.

A 20% lighter version of the original color is **214, 220, 169**, and **104, 111, 69** is the 20% darker color. If you saturate the color by 10%, you get **158, 164, 101**, and if you desaturate by 10%, it is **159, 164, 133**.

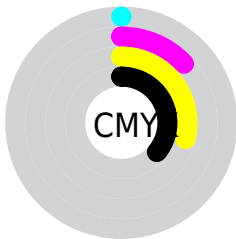
Distribution



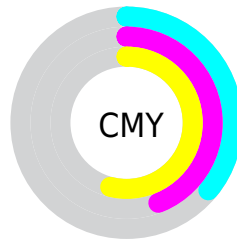
- Red (64%)
- Green (56%)
- Blue (46%)



- Red (62%)
- Yellow (64%)
- Blue (46%)



- Cyan (0%)
- Magenta (13%)
- Yellow (29%)
- Black (36%)



- Cyan (36%)
- Magenta (44%)
- Yellow (54%)

Brightness & Saturation Gradients

These gradients show how the RYB color 158, 164, 117 changes by changing the brightness by 10 percent. The first figure shows a shift by +10% for each color and the second figure -10%.

Similar to the brightness gradients but the following saturation gradients show a change of the RYB color 158, 164, 117 by changing the saturation by 10% instead.

 158, 164, 117

255, 255, 255

 214, 220, 169


 241, 248, 196

 227, 255, 224

253, 255, 253

 158, 164, 117

 158, 164, 101

 158, 164, 117

 128, 137, 92

 104, 111, 69

 79, 86, 46


 53, 62, 25

 26, 41, 0

 13, 0, 0

 0, 0, 0

 158, 164, 117

 159, 164, 133

■ 153, 164, 84

■ 164, 164, 150

■ 153, 164, 68

■ 164, 165, 166

■ 147, 164, 51

■ 164, 170, 183

■ 147, 164, 35

■ 164, 175, 199

■ 147, 164, 19

■ 164, 180, 215

■ 142, 164, 2

■ 164, 186, 232

■ 142, 164, 0

■ 164, 191, 248

■ 164, 195, 255

Harmonies

Analogous

The Analogous color harmony consists of three colors that are next to each other on the color wheel.



174, 143, 125



158, 164, 117



119, 149, 117

Triad

The Triadic color harmony groups three colors that are evenly spaced from another and form a triangle on the color wheel.



158, 164, 117



106, 130, 154



158, 139, 167

Complementary

The Complementary color scheme is a pair of colors which are on the opposite of each other on the color wheel.



158, 164, 117



117, 132, 164

Split Complementary

Split-complementary colors differ from the complementary color scheme. The scheme consists of three colors, the original color and two neighbors of the complement color.



139, 143, 174



158, 164, 117



107, 133, 166

Square

The Square scheme is like the rectangle color scheme, but the four colors are evenly spaced on the color wheel.



158, 164, 117



116, 140, 154



120, 139, 174



171, 136, 154

Rectangle

The Rectangle color scheme consists of four colors that form a rectangle on the color wheel.



158, 164, 117



121, 150, 133



120, 139, 174



152, 141, 170

Sweetspot

The Sweet Spot groups the original color and five complimentary colors.



158, 164, 117



212, 214, 195



164, 117, 139



104, 107, 95



235, 235, 235



107, 107, 107

Same Dimension

The Same Dimension uses a secret algorithm to generate beautiful new colors.



158, 164, 117



205, 214, 141



117, 164, 119



80, 82, 73



125, 145, 0



14, 18, 0

Inverse Universe

The Inverse Universe completely reimagines the original color for something new.



117, 132, 164



141, 164, 214



119, 117, 164



73, 76, 82



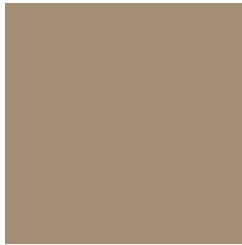
0, 46, 145



0, 6, 18

Previews

White Background



This preview shows how the RYB color 158, 164, 117 looks on a white background.

Color Contrast Check

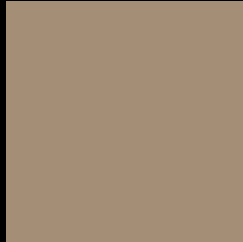
Large Text (above 18pt) WCAG AA ✓ Pass

Any Text WCAG AA × Fail

Large Text (above 18pt) WCAG AAA × Fail

Any Text WCAG AAA × Fail

Black Background



This preview shows how the RYB color 158, 164, 117 looks on a black background.

Color Contrast Check

Large Text (above 18pt) WCAG AA ✓ Pass

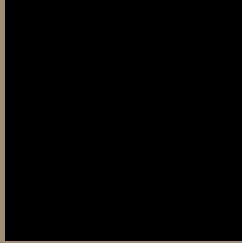
Any Text WCAG AA ✓ Pass

Large Text (above 18pt) WCAG AAA ✓ Pass

Any Text WCAG AAA × Fail

If you want to check with other color combinations, try the [Color Contrast Checker](#).

RYB 158, 164, 117 Background



This preview shows how black text looks on a background with the RYB color 158, 164, 117.



This preview shows how white text looks on a background with the RYB color 158, 164, 117.

Color Blindness Simulation

Color vision deficiency is a very complex topic, and I could not describe the different causes any better than Wikipedia does, so if you want to learn more, you should check out their [article about color blindness](#).

Dichromacy



Original Color


[158](#), [164](#), [117](#)

Protanopia

[131](#), [154](#), [119](#)

Deuteranopia

[169](#), [158](#), [117](#)



Tritanopia
168, 138, 148

Trichromacy



Original Color
158, 164, 117

Protanomaly
140, 158, 118

Deuteranomaly
167, 163, 117

Tritanomaly
167, 139, 137

Monochromacy



Original Color
158, 164, 117

Achromatopsia
146, 146, 146

Achromatomaly
149, 153, 135

CSS Examples

Text

The CSS property to change the color of the text to RYB 158, 164, 117 is called "color". The color property can be set on classes, ids or directly on the HTML element.

This example shows how text in the color `rgb(164, 142, 117)` looks like.

```
.text, #text, p{  
    color:rgb(164, 142, 117)  
}
```

If you want to add a text shadow in that color use the text-shadow property, you can generate a text shadow directly with our [CSS Text Shadow Generator](#).

Here you see how black text with a 4 pixel rgb(164, 142, 117) colored shadow looks like.

```
.shadow{ text-shadow: 4px 4px 2px rgb(164, 142, 117) }
```

Border

The CSS property to change the border of an element to RYB 158, 164, 117 is called "border". The border property can be set on classes, ids or directly on the HTML element.

This example shows the color as border, it can be applied via the CSS property "border" or "border-color".

```
.border, #border, table{ border:4px solid rgb(164, 142, 117) }
```

If only the border color should be changed use the property `border-color`.

```
.border{ border-color:rgb(164, 142, 117) }
```

If you want to add a box shadow in that color use:

Here you see how a box with a 4 pixel `rgb(164, 142, 117)` colored shadow looks like.

```
.boxshadow{ -moz-box-shadow:4px 4px 4px  
4px rgb(164, 142, 117); -webkit-box-  
shadow:4px 4px 4px 4px rgb(164, 142, 117);  
box-shadow:4px 4px 4px 4px rgb(164, 142,  
117) }
```

Background

The CSS property to change the background color of an element to RYB 158, 164, 117 is called "background". The background property can be set on classes, ids or directly on the HTML element.

```
.background, #background, body{  
background: rgb(164, 142, 117) }
```

If only the background color should be changed can be used:

```
.background{ background-color: rgb(164,  
142, 117) }
```

This example shows the color as background, it is applied via the CSS property "background".

To optimize and compress your CSS code, you can use our [online CSS compressor and optimizer](#) based on csstidy. If you want to create a linear or radial gradient as background or border, check our [CSS Gradient Generator](#).

Hey! You found this booklet interesting? Support Converting Colors with the new Membership Option!

The pro membership hides all ads, plus gives you double the colors in the color bucket, and more awesome pro features!

[Learn more, Memberships starting at \\$2.50/m!](#)

**Follow me
on Twitter!**

@ConvertingColor