

Converting Colors

`RYB(162, 174, 125)`

Have a look what the booklet for
RYB(162, 174, 125) contains.

RYB(162, 174, 125)	3
<i>Conversions</i>	4
<i>Details</i>	6
<i>Harmonies</i>	11
<i>Previews</i>	23
<i>Color Blindness Simulation</i>	26
<i>CSS Examples</i>	29

Color

R_YB(162, 174, 125)

Conversions

Conversions Part 1

Format	Color
Hex	AE997D
RGB	174, 153, 125
RGB Percent	68%, 60%, 49%
CMY	0.3176, 0.4003, 0.5098
CMYK	0.00, 0.12, 0.28, 0.32
HSL	34°, 23%, 59%
HSV	34°, 28%, 68%
XYZ	32.5351, 33.2352, 24.1023
YIQ	156.0870, 21.5040, -4.2560

Conversions

Conversions Part 2

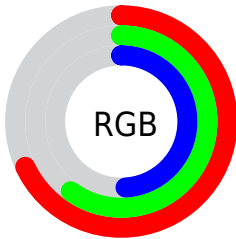
Format	Color
RYB	162, 174, 125
Decimal	11442557
CIELab	64.35, 3.42, 17.55
CIELCh	64, 17.882, 78.962
Yxy	33.2352, 0.3620, 0.3698
Android (android.graphics.Color)	4289632637 (0xFFAE997D)
YUV	156.0870, -15.3259, 15.7097
Hunter-Lab	57.6500, -0.1497, 15.5670

Details

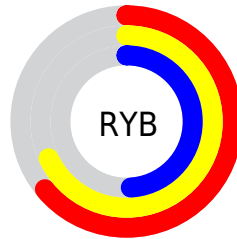
The RYB color **162, 174, 125** is a dark color, and the websafe version is hex **999966**. A complement of this color would be **125, 140, 174**, and the grayscale version is **156, 156, 156**.

A 20% lighter version of the original color is **219, 230, 178**, and **109, 121, 76** is the 20% darker color. If you saturate the color by 10%, you get **160, 174, 108**, and if you desaturate by 10%, it is **167, 174, 142**.

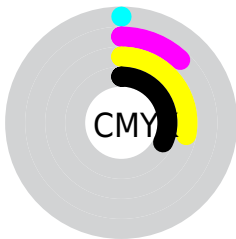
Distribution



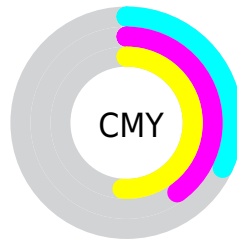
- Red (68%)
- Green (60%)
- Blue (49%)



- Red (64%)
- Yellow (68%)
- Blue (49%)



- Cyan (0%)
- Magenta (12%)
- Yellow (28%)
- Black (32%)



- Cyan (32%)
- Magenta (40%)
- Yellow (51%)

Brightness & Saturation Gradients

These gradients show how the RYB color 162, 174, 125 changes by changing the brightness by 10 percent. The first figure shows a shift by +10% for each color and the second figure -10%.

Similar to the brightness gradients but the following saturation gradients show a change of the RYB color 162, 174, 125 by changing the saturation by 10% instead.

 162, 174, 125

255, 255, 255

 219, 230, 178

 238, 255, 205


 233, 255, 233

 162, 174, 125

 135, 147, 100

 109, 121, 76

 84, 96, 53

 58, 71, 31

 31, 48, 9

 26, 22, 0

 0, 0, 0

 162, 174, 125

 160, 174, 108

 162, 174, 125

 167, 174, 142

■ 153, 174, 90

■ 171, 174, 160

■ 151, 174, 73

■ 174, 175, 177

■ 144, 174, 55

■ 174, 180, 195

■ 142, 174, 38

■ 174, 185, 212

■ 137, 174, 21

■ 174, 191, 229

■ 130, 174, 3

■ 174, 196, 247

■ 132, 174, 0

■ 174, 200, 255

■ 174, 203, 255

Harmonies

Analogous

The Analogous color harmony consists of three colors that are next to each other on the color wheel.



185, 154, 133



162, 174, 125



126, 158, 126

Triad

The Triadic color harmony groups three colors that are evenly spaced from another and form a triangle on the color wheel.



162, 174, 125



113, 139, 166



171, 149, 177

Complementary

The Complementary color scheme is a pair of colors which are on the opposite of each other on the color wheel.



162, 174, 125



125, 140, 174

Split Complementary

Split-complementary colors differ from the complementary color scheme. The scheme consists of three colors, the original color and two neighbors of the complement color.



151, 154, 186



162, 174, 125



116, 143, 179

Square

The Square scheme is like the rectangle color scheme, but the four colors are evenly spaced on the color wheel.



162, 174, 125



123, 149, 165



130, 149, 187



185, 145, 163

Rectangle

The Rectangle color scheme consists of four colors that form a rectangle on the color wheel.



162, 174, 125



131, 161, 147



130, 149, 187



165, 150, 181

Sweetspot

The Sweet Spot groups the original color and five complimentary colors.



162, 174, 125



223, 227, 209



174, 125, 146



112, 115, 103



242, 242, 242



115, 115, 115

Same Dimension

The Same Dimension uses a secret algorithm to generate beautiful new colors.



162, 174, 125



208, 227, 150



125, 174, 128



85, 87, 78



112, 150, 0



18, 23, 0

Inverse Universe

The Inverse Universe completely reimagines the original color for something new.



125, 140, 174



150, 173, 227



128, 125, 174



78, 81, 87



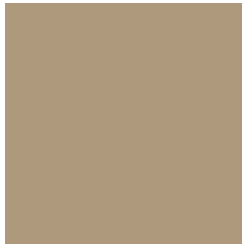
0, 45, 150



0, 7, 23

Previews

White Background



This preview shows how the RYB color 162, 174, 125 looks on a white background.

Color Contrast Check

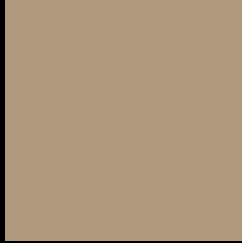
Large Text (above 18pt) WCAG AA × Fail

Any Text WCAG AA × Fail

Large Text (above 18pt) WCAG AAA × Fail

Any Text WCAG AAA × Fail

Black Background



This preview shows how the RYB color 162, 174, 125 looks on a black background.

Color Contrast Check

Large Text (above 18pt) WCAG AA ✓ Pass

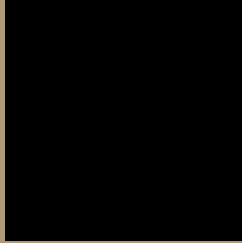
Any Text WCAG AA ✓ Pass

Large Text (above 18pt) WCAG AAA ✓ Pass

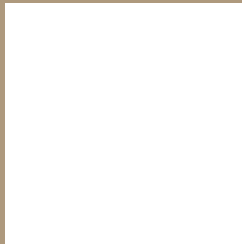
Any Text WCAG AAA ✓ Pass

If you want to check with other color combinations, try the [Color Contrast Checker](#).

R Y B 162, 174, 125 Background



This preview shows how black text looks on a background with the RYB color 162, 174, 125.



This preview shows how white text looks on a background with the RYB color 162, 174, 125.

Color Blindness Simulation

Color vision deficiency is a very complex topic, and I could not describe the different causes any better than Wikipedia does, so if you want to learn more, you should check out their [article about color blindness](#).

Dichromacy



Original Color

162, 174, 125

Protanopia

139, 166, 126

Deuteranopia

182, 168, 126



Tritanopia
178, 148, 160

Trichromacy



Original Color

162, 174, 125

Protanomaly

147, 169, 126

Deuteranomaly

179, 173, 126

Tritanomaly

177, 150, 147

Monochromacy



Original Color

162, 174, 125

Achromatopsia

156, 156, 156

Achromatomaly

159, 163, 145

CSS Examples

Text

The CSS property to change the color of the text to RYB 162, 174, 125 is called "color". The color property can be set on classes, ids or directly on the HTML element.

This example shows how text in the color rgb(174, 153, 125) looks like.

```
.text, #text, p{  
    color:rgb(174, 153, 125)  
}
```

If you want to add a text shadow in that color use the text-shadow property, you can generate a text shadow directly with our [CSS Text Shadow Generator](#).

Here you see how black text with a 4 pixel rgb(174, 153, 125) colored shadow looks like.

```
.shadow{ text-shadow: 4px 4px 2px rgb(174, 153, 125) }
```

Border

The CSS property to change the border of an element to RYB 162, 174, 125 is called "border". The border property can be set on classes, ids or directly on the HTML element.

This example shows the color as border, it can be applied via the CSS property "border" or "border-color".

```
.border, #border, table{ border:4px solid rgb(174, 153, 125) }
```

If only the border color should be changed use the property `border-color`.

```
.border{ border-color:rgb(174, 153, 125) }
```

If you want to add a box shadow in that color use:

Here you see how a box with a 4 pixel `rgb(174, 153, 125)` colored shadow looks like.

```
.boxshadow{ -moz-box-shadow:4px 4px 4px  
4px rgb(174, 153, 125); -webkit-box-  
shadow:4px 4px 4px 4px rgb(174, 153, 125);  
box-shadow:4px 4px 4px 4px rgb(174, 153,  
125) }
```

Background

The CSS property to change the background color of an element to RYB 162, 174, 125 is called "background". The background property can be set on classes, ids or directly on the HTML element.

```
.background, #background, body{  
background: rgb(174, 153, 125) }
```

If only the background color should be changed can be used:

```
.background{ background-color: rgb(174,  
153, 125) }
```

This example shows the color as background, it is applied via the CSS property "background".

To optimize and compress your CSS code, you can use our [online CSS compressor and optimizer](#) based on csstidy. If you want to create a linear or radial gradient as background or border, check our [CSS Gradient Generator](#).

Hey! You found this booklet interesting? Support Converting Colors with the new Membership Option!

The pro membership hides all ads, plus gives you double the colors in the color bucket, and more awesome pro features!

[Learn more, Memberships starting at \\$2.50/m!](#)

**Follow me
on Twitter!**

@ConvertingColor