

Converting Colors

`RYB(163, 161, 86)`

Have a look what the booklet for
RYB(163, 161, 86) contains.

RYB(163, 161, 86)	3
<i>Conversions</i>	4
<i>Details</i>	6
<i>Harmonies</i>	11
<i>Previews</i>	23
<i>Color Blindness Simulation</i>	26
<i>CSS Examples</i>	29

Color

R_YB(163, 161, 86)

Conversions

Conversions Part 1

Format	Color
Hex	A37C56
RGB	163, 124, 86
RGB Percent	64%, 49%, 34%
CMY	0.3608, 0.5138, 0.6627
CMYK	0.00, 0.24, 0.47, 0.36
HSL	30°, 31%, 49%
HSV	30°, 47%, 64%
XYZ	23.9908, 22.8721, 11.9544
YIQ	131.3290, 35.4420, -3.5500

Conversions

Conversions Part 2

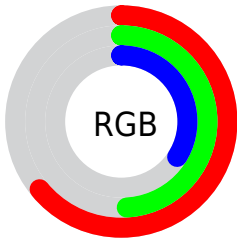
Format	Color
RYB	163, 161, 86
Decimal	10714198
CIELab	54.94, 10.21, 26.54
CIELCh	55, 28.440, 68.957
Yxy	22.8721, 0.4079, 0.3889
Android (android.graphics.Color)	4288904278 (0xFFA37C56)
YUV	131.3290, -22.3472, 27.7755
Hunter-Lab	47.8248, 5.8494, 18.6570

Details

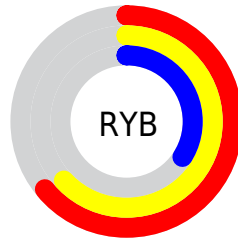
The RYB color **163, 161, 86** is a dark color, and the websafe version is hex **996633**. A complement of this color would be **86, 112, 163**, and the grayscale version is **132, 132, 132**.

A 20% lighter version of the original color is **220, 216, 136**, and **107, 109, 40** is the 20% darker color. If you saturate the color by 10%, you get **163, 161, 70**, and if you desaturate by 10%, it is **163, 161, 102**.

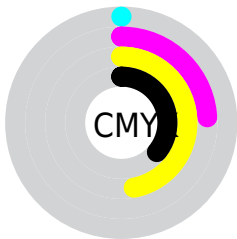
Distribution



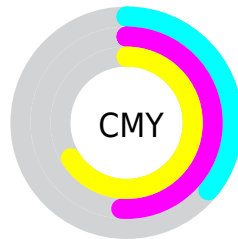
- Red (64%)
- Green (49%)
- Blue (34%)



- Red (64%)
- Yellow (63%)
- Blue (34%)



- Cyan (0%)
- Magenta (24%)
- Yellow (47%)
- Black (36%)



- Cyan (36%)
- Magenta (51%)
- Yellow (66%)

Brightness & Saturation Gradients

These gradients show how the RYB color 163, 161, 86 changes by changing the brightness by 10 percent. The first figure shows a shift by +10% for each color and the second figure -10%.

Similar to the brightness gradients but the following saturation gradients show a change of the RYB color 163, 161, 86 by changing the saturation by 10% instead.



163, 161, 86



163, 161, 86

255, 255, 255



136, 136, 62



220, 216, 136



107, 109, 40



249, 241, 163



74, 83, 18



226, 255, 190



53, 59, 0



218, 255, 218



35, 12, 0



246, 255, 246



0, 0, 0



163, 161, 86



163, 161, 86



163, 161, 70



163, 161, 102



163, 159, 53



163, 163, 119

■ 163, 159, 37

■ 163, 163, 135

■ 163, 159, 21

■ 163, 163, 151

■ 163, 161, 4

■ 163, 164, 168

■ 163, 157, 0

■ 163, 170, 184

■ 163, 176, 200

■ 163, 181, 216

■ 163, 186, 233

Harmonies

Analogous

The Analogous color harmony consists of three colors that are next to each other on the color wheel.



177, 119, 102



163, 161, 86



93, 141, 82

Triad

The Triadic color harmony groups three colors that are evenly spaced from another and form a triangle on the color wheel.



163, 161, 86



55, 102, 145



144, 122, 170

Complementary

The Complementary color scheme is a pair of colors which are on the opposite of each other on the color wheel.



163, 161, 86



86, 112, 163

Split Complementary

Split-complementary colors differ from the complementary color scheme. The scheme consists of three colors, the original color and two neighbors of the complement color.



109, 126, 180



163, 161, 86



43, 97, 162

Square

The Square scheme is like the rectangle color scheme, but the four colors are evenly spaced on the color wheel.



163, 161, 86



84, 124, 143



70, 112, 177



169, 115, 150

Rectangle

The Rectangle color scheme consists of four colors that form a rectangle on the color wheel.



163, 161, 86



88, 137, 102



70, 112, 177



133, 125, 174

Sweetspot

The Sweet Spot groups the original color and five complimentary colors.



163, 161, 86



212, 212, 182



163, 86, 126



107, 107, 89



235, 235, 235



107, 107, 107

Same Dimension

The Same Dimension uses a secret algorithm to generate beautiful new colors.



163, 161, 86



212, 210, 91



87, 163, 86



82, 80, 73



145, 143, 0



18, 18, 0

Inverse Universe

The Inverse Universe completely reimagines the original color for something new.



86, 112, 163



91, 132, 212



86, 87, 163



73, 76, 82



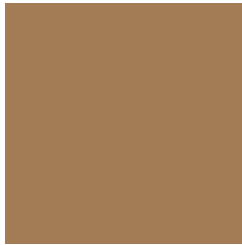
0, 49, 145



0, 6, 18

Previews

White Background



This preview shows how the RYB color 163, 161, 86 looks on a white background.

Color Contrast Check

Large Text (above 18pt) WCAG AA ✓ Pass

Any Text WCAG AA ✗ Fail

Large Text (above 18pt) WCAG AAA ✗ Fail

Any Text WCAG AAA ✗ Fail

Black Background



This preview shows how the RYB color 163, 161, 86 looks on a black background.

Color Contrast Check

Large Text (above 18pt) WCAG AA ✓ Pass

Any Text WCAG AA ✓ Pass

Large Text (above 18pt) WCAG AAA ✓ Pass

Any Text WCAG AAA × Fail

If you want to check with other color combinations, try the [Color Contrast Checker](#).

RYB 163, 161, 86 Background



This preview shows how black text looks on a background with the RYB color 163, 161, 86.



This preview shows how white text looks on a background with the RYB color 163, 161, 86.

Color Blindness Simulation

Color vision deficiency is a very complex topic, and I could not describe the different causes any better than Wikipedia does, so if you want to learn more, you should check out their [article about color blindness](#).

Dichromacy



Original Color


163, 161, 86

Protanopia

103, 143, 89

Deuteranopia

144, 158, 86



Tritanopia
167, 119, 128

Trichromacy



Original Color

163, 161, 86

Protanomaly

120, 150, 88

Deuteranomaly

152, 160, 86

Tritanomaly

166, 122, 113

Monochromacy



Original Color

163, 161, 86

Achromatopsia

131, 131, 131

Achromatomaly

143, 139, 115

CSS Examples

Text

The CSS property to change the color of the text to RYB 163, 124, 86 is called "color". The color property can be set on classes, ids or directly on the HTML element.

This example shows how text in the color `rgb(163, 124, 86)` looks like.

```
.text, #text, p{  
    color:rgb(163, 124, 86)  
}
```

If you want to add a text shadow in that color use the text-shadow property, you can generate a text shadow directly with our [CSS Text Shadow Generator](#).

Here you see how black text with a 4 pixel rgb(163, 124, 86) colored shadow looks like.

```
.shadow{ text-shadow: 4px 4px 2px rgb(163, 124, 86) }
```

Border

The CSS property to change the border of an element to RYB 163, 161, 86 is called "border". The border property can be set on classes, ids or directly on the HTML element.

This example shows the color as border, it can be applied via the CSS property "border" or "border-color".

```
.border, #border, table{ border:4px solid rgb(163, 124, 86) }
```

If only the border color should be changed use the property `border-color`.

```
.border{ border-color:rgb(163, 124, 86) }
```

If you want to add a box shadow in that color use:

Here you see how a box with a 4 pixel `rgb(163, 124, 86)` colored shadow looks like.

```
.boxshadow{ -moz-box-shadow:4px 4px 4px  
4px rgb(163, 124, 86); -webkit-box-  
shadow:4px 4px 4px 4px rgb(163, 124, 86);  
box-shadow:4px 4px 4px 4px rgb(163, 124,  
86) }
```

Background

The CSS property to change the background color of an element to RGB 163, 124, 86 is called "background". The background property can be set on classes, ids or directly on the HTML element.

```
.background, #background, body{  
background: rgb(163, 124, 86) }
```

If only the background color should be changed can be used:

```
.background{ background-color: rgb(163,  
124, 86) }
```

This example shows the color as background, it is applied via the CSS property "background".

To optimize and compress your CSS code, you can use our [online CSS compressor and optimizer](#) based on csstidy. If you want to create a linear or radial gradient as background or border, check our [CSS Gradient Generator](#).

Hey! You found this booklet interesting? Support Converting Colors with the new Membership Option!

The pro membership hides all ads, plus gives you double the colors in the color bucket, and more awesome pro features!

[Learn more, Memberships starting at \\$2.50/m!](#)

**Follow me
on Twitter!**

@ConvertingColor