

Converting Colors

`RYB(164, 142, 87)`

Have a look what the booklet for
RYB(164, 142, 87) contains.

RYB(164, 142, 87)	3
<i>Conversions</i>	4
<i>Details</i>	6
<i>Harmonies</i>	11
<i>Previews</i>	23
<i>Color Blindness Simulation</i>	26
<i>CSS Examples</i>	29

Color

`RYB(164, 142, 87)`

Conversions

Conversions Part 1

Format	Color
Hex	A47757
RGB	164, 119, 87
RGB Percent	64%, 47%, 34%
CMY	0.3569, 0.5330, 0.6588
CMYK	0.00, 0.27, 0.47, 0.36
HSL	25°, 31%, 49%
HSV	25°, 47%, 64%
XYZ	23.6369, 21.7941, 11.9777
YIQ	128.8070, 37.0920, -0.4120

Conversions

Conversions Part 2

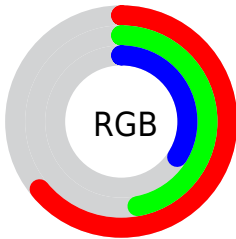
Format	Color
RYB	164, 142, 87
Decimal	10778455
CIELab	53.81, 13.53, 24.53
CIELCh	54, 28.013, 61.116
Yxy	21.7941, 0.4117, 0.3796
Android (android.graphics.Color)	4288968535 (0xFFA47757)
YUV	128.8070, -20.6109, 30.8643
Hunter-Lab	46.6842, 8.6799, 17.4670

Details

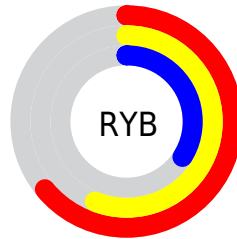
The RYB color **164, 142, 87** is a dark color, and the websafe version is hex **996633**. A complement of this color would be **87, 115, 164**, and the grayscale version is **129, 129, 129**.

A 20% lighter version of the original color is **221, 194, 137**, and **110, 91, 41** is the 20% darker color. If you saturate the color by 10%, you get **164, 138, 71**, and if you desaturate by 10%, it is **164, 148, 103**.

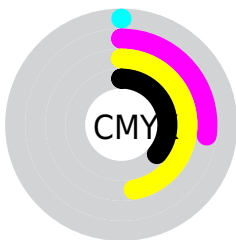
Distribution



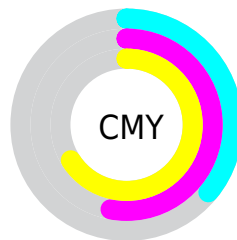
- Red (64%)
- Green (47%)
- Blue (34%)



- Red (64%)
- Yellow (56%)
- Blue (34%)



- Cyan (0%)
- Magenta (27%)
- Yellow (47%)
- Black (36%)



- Cyan (36%)
- Magenta (53%)
- Yellow (66%)

Brightness & Saturation Gradients

These gradients show how the RYB color 164, 142, 87 changes by changing the brightness by 10 percent. The first figure shows a shift by +10% for each color and the second figure -10%.

Similar to the brightness gradients but the following saturation gradients show a change of the RYB color 164, 142, 87 by changing the saturation by 10% instead.



164, 142, 87



164, 142, 87

255, 255, 255



137, 116, 63



221, 194, 137



110, 94, 41



250, 223, 164



84, 70, 20



241, 255, 191



60, 49, 0



219, 255, 219



35, 3, 0



247, 255, 247



0, 0, 0



164, 142, 87



164, 142, 87



164, 138, 71



164, 148, 103



164, 133, 54



164, 150, 120

■ 164, 127, 38

■ 164, 157, 136

■ 164, 124, 21

■ 164, 159, 153

■ 164, 118, 5

■ 164, 166, 169

■ 164, 116, 0

■ 164, 172, 185

■ 164, 178, 202

■ 164, 184, 218

■ 164, 190, 235

Harmonies

Analogous

The Analogous color harmony consists of three colors that are next to each other on the color wheel.



175, 113, 105



164, 142, 87



103, 144, 80

Triad

The Triadic color harmony groups three colors that are evenly spaced from another and form a triangle on the color wheel.



164, 142, 87



60, 105, 142



133, 122, 170

Complementary

The Complementary color scheme is a pair of colors which are on the opposite of each other on the color wheel.



164, 142, 87



87, 115, 164

Split Complementary

Split-complementary colors differ from the complementary color scheme. The scheme consists of three colors, the original color and two neighbors of the complement color.



97, 121, 177



164, 142, 87



41, 94, 153

Square

The Square scheme is like the rectangle color scheme, but the four colors are evenly spaced on the color wheel.



164, 142, 87



90, 128, 139



59, 105, 170



160, 114, 152

Rectangle

The Rectangle color scheme consists of four colors that form a rectangle on the color wheel.



164, 142, 87



83, 132, 87



59, 105, 170



121, 125, 173

Sweetspot

The Sweet Spot groups the original color and five complimentary colors.



164, 142, 87



214, 207, 184



164, 87, 132



107, 100, 89



235, 235, 235



107, 107, 107

Same Dimension

The Same Dimension uses a secret algorithm to generate beautiful new colors.



164, 142, 87



214, 180, 94



94, 164, 87



82, 80, 73



145, 105, 0



18, 11, 0

Inverse Universe

The Inverse Universe completely reimagines the original color for something new.



87, 115, 164



94, 138, 214



87, 93, 164



73, 76, 82



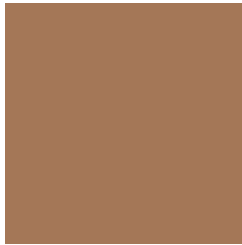
0, 54, 145



0, 6, 18

Previews

White Background



This preview shows how the RYB color 164, 142, 87 looks on a white background.

Color Contrast Check

Large Text (above 18pt) WCAG AA ✓ Pass

Any Text WCAG AA ✗ Fail

Large Text (above 18pt) WCAG AAA ✗ Fail

Any Text WCAG AAA ✗ Fail

Black Background



This preview shows how the RYB color 164, 142, 87 looks on a black background.

Color Contrast Check

Large Text (above 18pt) WCAG AA ✓ Pass

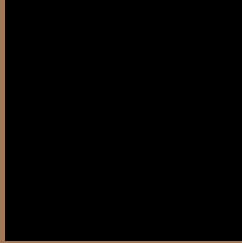
Any Text WCAG AA ✓ Pass

Large Text (above 18pt) WCAG AAA ✓ Pass

Any Text WCAG AAA × Fail

If you want to check with other color combinations, try the [Color Contrast Checker](#).

R Y B 164, 142, 87 Background



This preview shows how black text looks on a background with the RYB color 164, 142, 87.



This preview shows how white text looks on a background with the RYB color 164, 142, 87.

Color Blindness Simulation

Color vision deficiency is a very complex topic, and I could not describe the different causes any better than Wikipedia does, so if you want to learn more, you should check out their [article about color blindness](#).

Dichromacy



Original Color


164, 142, 87

Protanopia

104, 139, 91

Deuteranopia

146, 155, 86



Tritanopia
167, 114, 123

Trichromacy



Original Color

164, 142, 87

Protanomaly

128, 148, 90

Deuteranomaly

158, 158, 86

Tritanomaly

166, 117, 110

Monochromacy



Original Color

164, 142, 87

Achromatopsia

129, 129, 129

Achromatomaly

142, 132, 114

CSS Examples

Text

The CSS property to change the color of the text to RYB 164, 142, 87 is called "color". The color property can be set on classes, ids or directly on the HTML element.

This example shows how text in the color `rgb(164, 119, 87)` looks like.

```
.text, #text, p{  
    color:rgb(164, 119, 87)  
}
```

If you want to add a text shadow in that color use the text-shadow property, you can generate a text shadow directly with our [CSS Text Shadow Generator](#).

Here you see how black text with a 4 pixel rgb(164, 119, 87) colored shadow looks like.

```
.shadow{ text-shadow: 4px 4px 2px rgb(164, 119, 87) }
```

Border

The CSS property to change the border of an element to RYB 164, 142, 87 is called "border". The border property can be set on classes, ids or directly on the HTML element.

This example shows the color as border, it can be applied via the CSS property "border" or "border-color".

```
.border, #border, table{ border:4px solid rgb(164, 119, 87) }
```

If only the border color should be changed use the property `border-color`.

```
.border{ border-color:rgb(164, 119, 87) }
```

If you want to add a box shadow in that color use:

Here you see how a box with a 4 pixel `rgb(164, 119, 87)` colored shadow looks like.

```
.boxshadow{ -moz-box-shadow:4px 4px 4px 4px rgb(164, 119, 87); -webkit-box-shadow:4px 4px 4px 4px rgb(164, 119, 87); box-shadow:4px 4px 4px 4px rgb(164, 119, 87) }
```

Background

The CSS property to change the background color of an element to RYB 164, 142, 87 is called "background".

The background property can be set on classes, ids or directly on the HTML element.

```
.background, #background, body{  
background: rgb(164, 119, 87) }
```

If only the background color should be changed can be used:

```
.background{ background-color: rgb(164,  
119, 87) }
```

This example shows the color as background, it is applied via the CSS property "background".

To optimize and compress your CSS code, you can use our [online CSS compressor and optimizer](#) based on csstidy. If you want to create a linear or radial gradient as background or border, check our [CSS Gradient Generator](#).

Hey! You found this booklet interesting? Support Converting Colors with the new Membership Option!

The pro membership hides all ads, plus gives you double the colors in the color bucket, and more awesome pro features!

[Learn more, Memberships starting at \\$2.50/m!](#)

**Follow me
on Twitter!**

@ConvertingColor