

Converting Colors

`RYB(165, 146, 82)`

Have a look what the booklet for
RYB(165, 146, 82) contains.

RYB(165, 146, 82)	3
<i>Conversions</i>	4
<i>Details</i>	6
<i>Harmonies</i>	11
<i>Previews</i>	23
<i>Color Blindness Simulation</i>	26
<i>CSS Examples</i>	29

Color

`RYB(165, 146, 82)`

Conversions

Conversions Part 1

Format	Color
Hex	A57652
RGB	165, 118, 82
RGB Percent	65%, 46%, 32%
CMY	0.3529, 0.5367, 0.6784
CMYK	0.00, 0.28, 0.50, 0.35
HSL	26°, 34%, 48%
HSV	26°, 50%, 65%
XYZ	23.5345, 21.5975, 10.9110
YIQ	127.9490, 39.5680, -1.2320

Conversions

Conversions Part 2

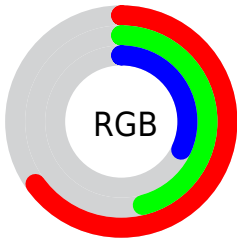
Format	Color
RYB	165, 146, 82
Decimal	10843730
CIELab	53.60, 13.98, 27.10
CIELCh	54, 30.495, 62.704
Yxy	21.5975, 0.4199, 0.3854
Android (android.graphics.Color)	4289033810 (0xFFA57652)
YUV	127.9490, -22.6529, 32.4937
Hunter-Lab	46.4731, 9.0666, 18.6110

Details

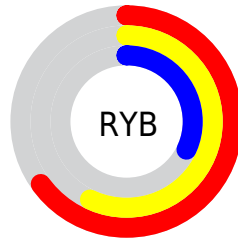
The RYB color **165, 146, 82** is a dark color, and the websafe version is hex **996633**. A complement of this color would be **82, 112, 165**, and the grayscale version is **128, 128, 128**.

A 20% lighter version of the original color is **222, 198, 132**, and **111, 98, 36** is the 20% darker color. If you saturate the color by 10%, you get **165, 142, 66**, and if you desaturate by 10%, it is **165, 149, 98**.

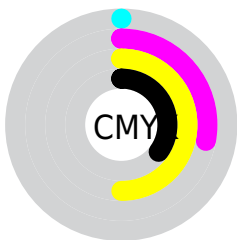
Distribution



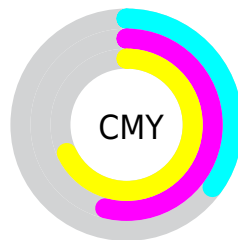
- Red (65%)
- Green (46%)
- Blue (32%)



- Red (65%)
- Yellow (57%)
- Blue (32%)



- Cyan (0%)
- Magenta (28%)
- Yellow (50%)
- Black (35%)



- Cyan (35%)
- Magenta (54%)
- Yellow (68%)

Brightness & Saturation Gradients

These gradients show how the RYB color 165, 146, 82 changes by changing the brightness by 10 percent. The first figure shows a shift by +10% for each color and the second figure -10%.

Similar to the brightness gradients but the following saturation gradients show a change of the RYB color 165, 146, 82 by changing the saturation by 10% instead.



165, 146, 82



165, 146, 82

255, 255, 255



137, 119, 59



222, 198, 132



111, 98, 36



251, 228, 158



84, 75, 15



235, 255, 185



59, 46, 0



214, 255, 213



35, 2, 0



242, 255, 242



0, 0, 0



165, 146, 82



165, 146, 82



165, 142, 66




165, 149, 98



165, 140, 49



165, 154, 115


 165, 135, 32

 165, 156, 132


 165, 131, 16

 165, 160, 148

 165, 128, 0

 164, 165, 164

 165, 171, 181

 165, 177, 197

 165, 183, 214

 165, 189, 230

Harmonies

Analogous

The Analogous color harmony consists of three colors that are next to each other on the color wheel.



178, 111, 101



165, 146, 82



96, 143, 75

Triad

The Triadic color harmony groups three colors that are evenly spaced from another and form a triangle on the color wheel.



165, 146, 82



47, 98, 142



134, 120, 172

Complementary

The Complementary color scheme is a pair of colors which are on the opposite of each other on the color wheel.



165, 146, 82



82, 112, 165

Split Complementary

Split-complementary colors differ from the complementary color scheme. The scheme consists of three colors, the original color and two neighbors of the complement color.



94, 119, 180



165, 146, 82



14, 81, 156

Square

The Square scheme is like the rectangle color scheme, but the four colors are evenly spaced on the color wheel.



165, 146, 82



84, 126, 140



47, 100, 174



163, 112, 153

Rectangle

The Rectangle color scheme consists of four colors that form a rectangle on the color wheel.



165, 146, 82



79, 133, 87



47, 100, 174



122, 124, 176

Sweetspot

The Sweet Spot groups the original color and five complimentary colors.



165, 146, 82



214, 207, 182



165, 82, 129



107, 102, 88



235, 235, 235



107, 107, 107

Same Dimension

The Same Dimension uses a secret algorithm to generate beautiful new colors.



165, 146, 82



214, 186, 86



88, 165, 82



82, 80, 73



145, 111, 0



18, 14, 0

Inverse Universe

The Inverse Universe completely reimagines the original color for something new.



82, 112, 165



86, 132, 214



82, 88, 165



73, 76, 82



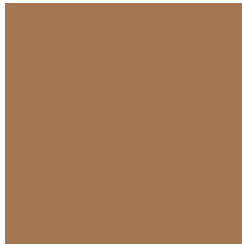
0, 52, 145



0, 6, 18

Previews

White Background



This preview shows how the RYB color 165, 146, 82 looks on a white background.

Color Contrast Check

Large Text (above 18pt) WCAG AA ✓ Pass

Any Text WCAG AA × Fail

Large Text (above 18pt) WCAG AAA × Fail

Any Text WCAG AAA × Fail

Black Background



This preview shows how the RYB color 165, 146, 82 looks on a black background.

Color Contrast Check

Large Text (above 18pt) WCAG AA ✓ Pass

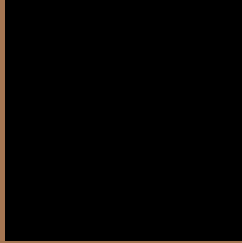
Any Text WCAG AA ✓ Pass

Large Text (above 18pt) WCAG AAA ✓ Pass

Any Text WCAG AAA × Fail

If you want to check with other color combinations, try the [Color Contrast Checker](#).

RYB 165, 146, 82 Background



This preview shows how black text looks on a background with the RYB color 165, 146, 82.



This preview shows how white text looks on a background with the RYB color 165, 146, 82.

Color Blindness Simulation

Color vision deficiency is a very complex topic, and I could not describe the different causes any better than Wikipedia does, so if you want to learn more, you should check out their [article about color blindness](#).


Dichromacy



Original Color
165, 146, 82

Protanopia
100, 139, 86

Deuteranopia
137, 155, 81



Tritanopia
168, 113, 122

Trichromacy



Original Color

165, 146, 82

Protanomaly

124, 148, 85

Deuteranomaly

155, 159, 81

Tritanomaly

167, 116, 107

Monochromacy



Original Color

165, 146, 82

Achromatopsia

128, 128, 128

Achromatomaly

141, 134, 111

CSS Examples

Text

The CSS property to change the color of the text to RYB 165, 146, 82 is called "color". The color property can be set on classes, ids or directly on the HTML element.

This example shows how text in the color `rgb(165, 118, 82)` looks like.

```
.text, #text, p{  
    color:rgb(165, 118, 82)  
}
```

If you want to add a text shadow in that color use the text-shadow property, you can generate a text shadow directly with our [CSS Text Shadow Generator](#).

Here you see how black text with a 4 pixel rgb(165, 118, 82) colored shadow looks like.

```
.shadow{ text-shadow: 4px 4px 2px rgb(165, 118, 82) }
```

Border

The CSS property to change the border of an element to RYB 165, 146, 82 is called "border". The border property can be set on classes, ids or directly on the HTML element.

This example shows the color as border, it can be applied via the CSS property "border" or "border-color".

```
.border, #border, table{ border:4px solid rgb(165, 118, 82) }
```

If only the border color should be changed use the property `border-color`.

```
.border{ border-color:rgb(165, 118, 82) }
```

If you want to add a box shadow in that color use:

Here you see how a box with a 4 pixel `rgb(165, 118, 82)` colored shadow looks like.

```
.boxshadow{ -moz-box-shadow:4px 4px 4px  
4px rgb(165, 118, 82); -webkit-box-  
shadow:4px 4px 4px 4px rgb(165, 118, 82);  
box-shadow:4px 4px 4px 4px rgb(165, 118,  
82) }
```

Background

The CSS property to change the background color of an element to RGB 165, 118, 82 is called "background". The background property can be set on classes, ids or directly on the HTML element.

```
.background, #background, body{  
background: rgb(165, 118, 82) }
```

If only the background color should be changed can be used:

```
.background{ background-color: rgb(165,  
118, 82) }
```

This example shows the color as background, it is applied via the CSS property "background".

To optimize and compress your CSS code, you can use our [online CSS compressor and optimizer](#) based on csstidy. If you want to create a linear or radial gradient as background or border, check our [CSS Gradient Generator](#).

Hey! You found this booklet interesting? Support Converting Colors with the new Membership Option!

The pro membership hides all ads, plus gives you double the colors in the color bucket, and more awesome pro features!

[Learn more, Memberships starting at \\$2.50/m!](#)

**Follow me
on Twitter!**

@ConvertingColor