

Converting Colors

`RYB(167, 146, 106)`

Have a look what the booklet for
RYB(167, 146, 106) contains.

RYB(167, 146, 106)	3
<i>Conversions</i>	4
<i>Details</i>	6
<i>Harmonies</i>	11
<i>Previews</i>	23
<i>Color Blindness Simulation</i>	26
<i>CSS Examples</i>	29

Color

R_YB(167, 146, 106)

Conversions

Conversions Part 1

Format	Color
Hex	A7826A
RGB	167, 130, 106
RGB Percent	65%, 51%, 42%
CMY	0.3451, 0.4896, 0.5843
CMYK	0.00, 0.22, 0.37, 0.35
HSL	24°, 26%, 54%
HSV	24°, 37%, 65%
XYZ	26.5416, 25.2635, 17.1131
YIQ	138.3270, 29.7560, 0.3800

Conversions

Conversions Part 2

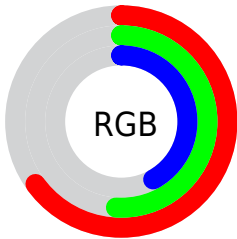
Format	Color
R_{YB}	167, 146, 106
Decimal	10977898
CIE _{Lab}	57.33, 10.73, 18.50
CIE _{LCh}	57, 21.387, 59.887
Yxy	25.2635, 0.3851, 0.3666
Android (android.graphics.Color)	4289167978 (0xFFA7826A)
YUV	138.3270, -15.9372, 25.1462
Hunter-Lab	50.2628, 6.2980, 14.9974

Details

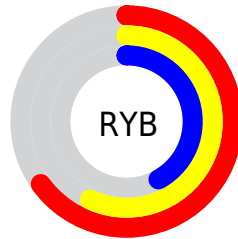
The RYB color **167, 146, 106** is a dark color, and the websafe version is hex **996666**. A complement of this color would be **106, 129, 167**, and the grayscale version is **139, 139, 139**.

A 20% lighter version of the original color is **223, 200, 157**, and **114, 96, 59** is the 20% darker color. If you saturate the color by 10%, you get **167, 140, 89**, and if you desaturate by 10%, it is **167, 151, 123**.

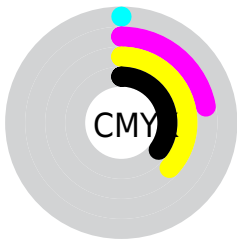
Distribution



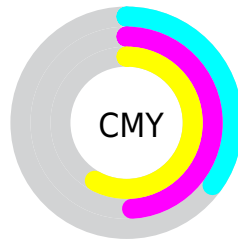
- Red (65%)
- Green (51%)
- Blue (42%)



- Red (65%)
- Yellow (57%)
- Blue (42%)



- Cyan (0%)
- Magenta (22%)
- Yellow (37%)
- Black (35%)



- Cyan (35%)
- Magenta (49%)
- Yellow (58%)

Brightness & Saturation Gradients

These gradients show how the RYB color 167, 146, 106 changes by changing the brightness by 10 percent. The first figure shows a shift by +10% for each color and the second figure -10%.

Similar to the brightness gradients but the following saturation gradients show a change of the RYB color 167, 146, 106 by changing the saturation by 10% instead.

 167, 146, 106

255, 255, 255

 223, 200, 157

 252, 229, 184

 237, 255, 212

 240, 255, 240

 167, 146, 106

 167, 140, 89

 167, 134, 73

 167, 146, 106

 140, 120, 82

 114, 96, 59


 88, 73, 37


 63, 51, 16

 40, 27, 0

 0, 0, 0

 167, 146, 106

 167, 151, 123

 167, 157, 139

■ 167, 129, 56

■ 167, 162, 156

■ 167, 124, 39

■ 167, 169, 173

■ 167, 119, 22

■ 167, 176, 189

■ 167, 112, 6

■ 167, 182, 206

■ 167, 109, 0

■ 167, 188, 223

■ 167, 194, 240

■ 167, 200, 255

Harmonies

Analogous

The Analogous color harmony consists of three colors that are next to each other on the color wheel.



175, 126, 120



167, 146, 106



121, 151, 100

Triad

The Triadic color harmony groups three colors that are evenly spaced from another and form a triangle on the color wheel.



167, 146, 106



91, 123, 148



141, 133, 170

Complementary

The Complementary color scheme is a pair of colors which are on the opposite of each other on the color wheel.



167, 146, 106



106, 129, 167

Split Complementary

Split-complementary colors differ from the complementary color scheme. The scheme consists of three colors, the original color and two neighbors of the complement color.



115, 132, 175



167, 146, 106



83, 117, 156

Square

The Square scheme is like the rectangle color scheme, but the four colors are evenly spaced on the color wheel.



167, 146, 106



110, 139, 146



92, 123, 169



162, 127, 157

Rectangle

The Rectangle color scheme consists of four colors that form a rectangle on the color wheel.



167, 146, 106



102, 140, 104



92, 123, 169



132, 135, 173

Sweetspot

The Sweet Spot groups the original color and five complimentary colors.



167, 146, 106



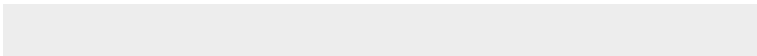
217, 207, 193



167, 106, 144



110, 105, 95



237, 237, 237



110, 110, 110

Same Dimension

The Same Dimension uses a secret algorithm to generate beautiful new colors.



167, 146, 106



217, 184, 121



114, 167, 106



84, 81, 76



148, 98, 0



20, 13, 0

Inverse Universe

The Inverse Universe completely reimagines the original color for something new.



106, 129, 167



121, 157, 217



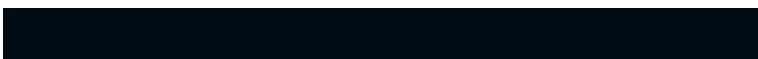
106, 112, 167



76, 79, 84



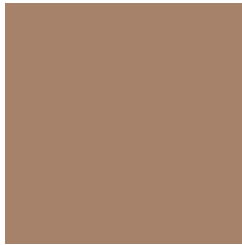
0, 56, 148



0, 8, 20

Previews

White Background



This preview shows how the RYB color 167, 146, 106 looks on a white background.

Color Contrast Check

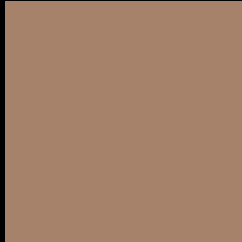
Large Text (above 18pt) WCAG AA ✓ Pass

Any Text WCAG AA × Fail

Large Text (above 18pt) WCAG AAA × Fail

Any Text WCAG AAA × Fail

Black Background



This preview shows how the RYB color 167, 146, 106 looks on a black background.

Color Contrast Check

Large Text (above 18pt) WCAG AA ✓ Pass

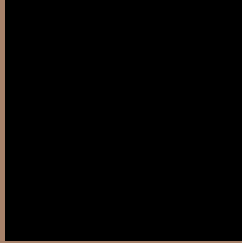
Any Text WCAG AA ✓ Pass

Large Text (above 18pt) WCAG AAA ✓ Pass

Any Text WCAG AAA × Fail

If you want to check with other color combinations, try the [Color Contrast Checker](#).

RYB 167, 146, 106 Background



This preview shows how black text looks on a background with the RYB color 167, 146, 106.



This preview shows how white text looks on a background with the RYB color 167, 146, 106.

Color Blindness Simulation

Color vision deficiency is a very complex topic, and I could not describe the different causes any better than Wikipedia does, so if you want to learn more, you should check out their [article about color blindness](#).

Dichromacy



Original Color

167, 146, 106

Protanopia

121, 147, 109

Deuteranopia

162, 155, 106



Tritanopia
170, 126, 136

Trichromacy



Original Color

167, 146, 106

Protanomaly

140, 154, 108

Deuteranomaly

164, 150, 106

Tritanomaly

169, 128, 125

Monochromacy



Original Color

167, 146, 106

Achromatopsia

138, 138, 138

Achromatomaly

149, 141, 126

CSS Examples

Text

The CSS property to change the color of the text to RYB 167, 146, 106 is called "color". The color property can be set on classes, ids or directly on the HTML element.

This example shows how text in the color `rgb(167, 130, 106)` looks like.

```
.text, #text, p{  
    color:rgb(167, 130, 106)  
}
```

If you want to add a text shadow in that color use the text-shadow property, you can generate a text shadow directly with our [CSS Text Shadow Generator](#).

Here you see how black text with a 4 pixel rgb(167, 130, 106) colored shadow looks like.

```
.shadow{ text-shadow: 4px 4px 2px rgb(167, 130, 106) }
```

Border

The CSS property to change the border of an element to RYB 167, 146, 106 is called "border". The border property can be set on classes, ids or directly on the HTML element.

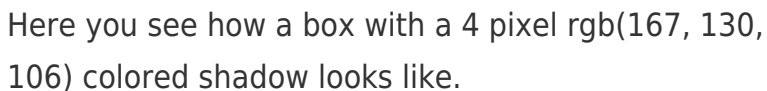
This example shows the color as border, it can be applied via the CSS property "border" or "border-color".

```
.border, #border, table{ border:4px solid rgb(167, 130, 106) }
```

If only the border color should be changed use the property `border-color`.

```
.border{ border-color:rgb(167, 130, 106) }
```

If you want to add a box shadow in that color use:



Here you see how a box with a 4 pixel `rgb(167, 130, 106)` colored shadow looks like.

```
.boxshadow{ -moz-box-shadow:4px 4px 4px 4px rgb(167, 130, 106); -webkit-box-shadow:4px 4px 4px 4px rgb(167, 130, 106); box-shadow:4px 4px 4px 4px rgb(167, 130, 106) }
```

Background

The CSS property to change the background color of an element to RYB 167, 146, 106 is called "background". The background property can be set on classes, ids or directly on the HTML element.

```
.background, #background, body{  
background: rgb(167, 130, 106) }
```

If only the background color should be changed can be used:

```
.background{ background-color: rgb(167,  
130, 106) }
```

This example shows the color as background, it is applied via the CSS property "background".

To optimize and compress your CSS code, you can use our [online CSS compressor and optimizer](#) based on csstidy. If you want to create a linear or radial gradient as background or border, check our [CSS Gradient Generator](#).

Hey! You found this booklet interesting? Support Converting Colors with the new Membership Option!

The pro membership hides all ads, plus gives you double the colors in the color bucket, and more awesome pro features!

[Learn more, Memberships starting at \\$2.50/m!](#)

**Follow me
on Twitter!**

@ConvertingColor