

Converting Colors

`RYB(168, 155, 93)`

Have a look what the booklet for
RYB(168, 155, 93) contains.

RYB(168, 155, 93)	3
<i>Conversions</i>	4
<i>Details</i>	6
<i>Harmonies</i>	11
<i>Previews</i>	23
<i>Color Blindness Simulation</i>	26
<i>CSS Examples</i>	29

Color

`RYB(168, 155, 93)`

Conversions

Conversions Part 1

Format	Color
Hex	A87F5D
RGB	168, 127, 93
RGB Percent	66%, 50%, 36%
CMY	0.3412, 0.5022, 0.6353
CMYK	0.00, 0.24, 0.45, 0.34
HSL	27°, 30%, 51%
HSV	27°, 45%, 66%
XYZ	25.7061, 24.2788, 13.6873
YIQ	135.3830, 35.3500, -1.8820

Conversions

Conversions Part 2

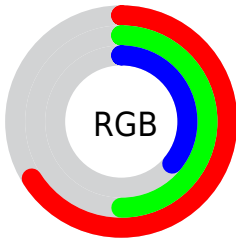
Format	Color
RYB	168, 155, 93
Decimal	11042653
CIELab	56.37, 11.43, 24.58
CIELCh	56, 27.106, 65.070
Yxy	24.2788, 0.4037, 0.3813
Android (android.graphics.Color)	4289232733 (0xFFA87F5D)
YUV	135.3830, -20.8948, 28.6051
Hunter-Lab	49.2735, 6.8950, 18.0217

Details

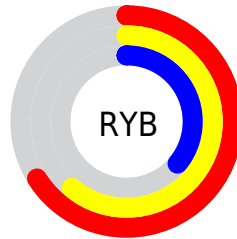
The RYB color **168, 155, 93** is a dark color, and the websafe version is hex **CC9966**. A complement of this color would be **93, 120, 168**, and the grayscale version is **136, 136, 136**.

A 20% lighter version of the original color is **225, 209, 144**, and **114, 106, 46** is the 20% darker color. If you saturate the color by 10%, you get **168, 153, 76**, and if you desaturate by 10%, it is **168, 157, 110**.

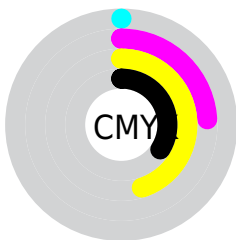
Distribution



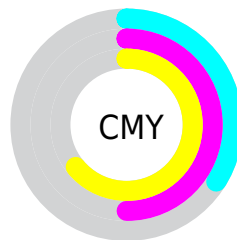
- Red (66%)
- Green (50%)
- Blue (36%)



- Red (66%)
- Yellow (61%)
- Blue (36%)



- Cyan (0%)
- Magenta (24%)
- Yellow (45%)
- Black (34%)



- Cyan (34%)
- Magenta (50%)
- Yellow (64%)

Brightness & Saturation Gradients

These gradients show how the RYB color 168, 155, 93 changes by changing the brightness by 10 percent. The first figure shows a shift by +10% for each color and the second figure -10%.

Similar to the brightness gradients but the following saturation gradients show a change of the RYB color 168, 155, 93 by changing the saturation by 10% instead.



168, 155, 93



168, 155, 93

255, 255, 255



141, 130, 69



225, 209, 144



114, 106, 46



254, 236, 170



88, 82, 25



229, 255, 198



57, 63, 0



226, 255, 226



39, 20, 0

254, 255, 254



0, 0, 0



168, 155, 93



168, 155, 93



168, 153, 76



168, 157, 110



168, 151, 59



168, 159, 127

■ 168, 144, 43

■ 168, 166, 143

■ 168, 143, 26

■ 168, 168, 160

■ 168, 141, 9

■ 168, 171, 177

■ 168, 139, 0

■ 168, 177, 194

■ 168, 183, 211

■ 168, 189, 227

■ 168, 195, 244

Harmonies

Analogous

The Analogous color harmony consists of three colors that are next to each other on the color wheel.



180, 122, 109



168, 155, 93



105, 148, 88

Triad

The Triadic color harmony groups three colors that are evenly spaced from another and form a triangle on the color wheel.



168, 155, 93



68, 111, 148



144, 128, 174

Complementary

The Complementary color scheme is a pair of colors which are on the opposite of each other on the color wheel.



168, 155, 93



93, 120, 168

Split Complementary

Split-complementary colors differ from the complementary color scheme. The scheme consists of three colors, the original color and two neighbors of the complement color.



110, 129, 182



168, 155, 93



55, 104, 161

Square

The Square scheme is like the rectangle color scheme, but the four colors are evenly spaced on the color wheel.



168, 155, 93



94, 131, 146



74, 115, 177



169, 120, 155

Rectangle

The Rectangle color scheme consists of four colors that form a rectangle on the color wheel.



168, 155, 93



92, 140, 101



74, 115, 177



133, 130, 178

Sweetspot

The Sweet Spot groups the original color and five complimentary colors.



168, 155, 93



219, 215, 191



168, 93, 134



110, 106, 92



237, 237, 237



110, 110, 110

Same Dimension

The Same Dimension uses a secret algorithm to generate beautiful new colors.



168, 155, 93



219, 197, 101



97, 168, 93



84, 84, 76



148, 122, 0



20, 16, 0

Inverse Universe

The Inverse Universe completely reimagines the original color for something new.



93, 120, 168



101, 143, 219



93, 97, 168



76, 79, 84



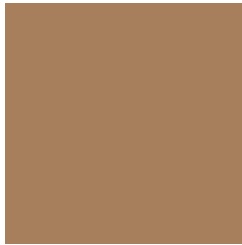
0, 52, 148



0, 7, 20

Previews

White Background



This preview shows how the RYB color 168, 155, 93 looks on a white background.

Color Contrast Check

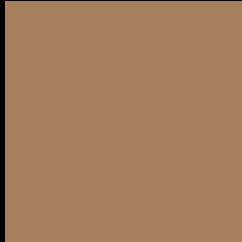
Large Text (above 18pt) WCAG AA ✓ Pass

Any Text WCAG AA ✗ Fail

Large Text (above 18pt) WCAG AAA ✗ Fail

Any Text WCAG AAA ✗ Fail

Black Background



This preview shows how the RYB color 168, 155, 93 looks on a black background.

Color Contrast Check

Large Text (above 18pt) WCAG AA ✓ Pass

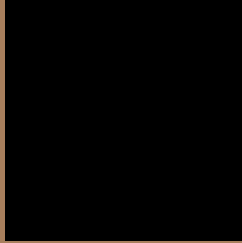
Any Text WCAG AA ✓ Pass

Large Text (above 18pt) WCAG AAA ✓ Pass

Any Text WCAG AAA × Fail

If you want to check with other color combinations, try the [Color Contrast Checker](#).

R Y B 168, 155, 93 Background



This preview shows how black text looks on a background with the RYB color 168, 155, 93.



This preview shows how white text looks on a background with the RYB color 168, 155, 93.

Color Blindness Simulation

Color vision deficiency is a very complex topic, and I could not describe the different causes any better than Wikipedia does, so if you want to learn more, you should check out their [article about color blindness](#).

Dichromacy



Original Color
168, 155, 93

Protanopia
111, 146, 97

Deuteranopia
151, 162, 92



Tritanopia
172, 122, 131

Trichromacy



Original Color
168, 155, 93

Protanomaly
131, 154, 96

Deuteranomaly
160, 164, 92

Tritanomaly
171, 125, 117

Monochromacy



Original Color
168, 155, 93

Achromatopsia
135, 135, 135

Achromatomaly
147, 142, 120

CSS Examples

Text

The CSS property to change the color of the text to RYB 168, 155, 93 is called "color". The color property can be set on classes, ids or directly on the HTML element.

This example shows how text in the color `rgb(168, 127, 93)` looks like.

```
.text, #text, p{  
    color:rgb(168, 127, 93)  
}
```

If you want to add a text shadow in that color use the text-shadow property, you can generate a text shadow directly with our [CSS Text Shadow Generator](#).

Here you see how black text with a 4 pixel rgb(168, 127, 93) colored shadow looks like.

```
.shadow{ text-shadow: 4px 4px 2px rgb(168, 127, 93) }
```

Border

The CSS property to change the border of an element to RYB 168, 155, 93 is called "border". The border property can be set on classes, ids or directly on the HTML element.

This example shows the color as border, it can be applied via the CSS property "border" or "border-color".

```
.border, #border, table{ border:4px solid rgb(168, 127, 93) }
```

If only the border color should be changed use the property border-color.

```
.border{ border-color:rgb(168, 127, 93) }
```

If you want to add a box shadow in that color use:

Here you see how a box with a 4 pixel rgb(168, 127, 93) colored shadow looks like.

```
.boxshadow{ -moz-box-shadow:4px 4px 4px  
4px rgb(168, 127, 93); -webkit-box-  
shadow:4px 4px 4px 4px rgb(168, 127, 93);  
box-shadow:4px 4px 4px 4px rgb(168, 127,  
93) }
```

Background

The CSS property to change the background color of an element to RYB 168, 127, 93 is called "background". The background property can be set on classes, ids or directly on the HTML element.

```
.background, #background, body{  
background: rgb(168, 127, 93) }
```

If only the background color should be changed can be used:

```
.background{ background-color: rgb(168,  
127, 93) }
```

This example shows the color as background, it is applied via the CSS property "background".

To optimize and compress your CSS code, you can use our [online CSS compressor and optimizer](#) based on csstidy. If you want to create a linear or radial gradient as background or border, check our [CSS Gradient Generator](#).

Hey! You found this booklet interesting? Support Converting Colors with the new Membership Option!

The pro membership hides all ads, plus gives you double the colors in the color bucket, and more awesome pro features!

[Learn more, Memberships starting at \\$2.50/m!](#)

**Follow me
on Twitter!**

@ConvertingColor