

Converting Colors

`RYB(172, 168, 124)`

Have a look what the booklet for
RYB(172, 168, 124) contains.

RYB(172, 168, 124)	3
<i>Conversions</i>	4
<i>Details</i>	6
<i>Harmonies</i>	11
<i>Previews</i>	23
<i>Color Blindness Simulation</i>	26
<i>CSS Examples</i>	29

Color

$\text{RYB}(172, 168, 124)$

Conversions

Conversions Part 1

Format	Color
Hex	AC937C
RGB	172, 147, 124
RGB Percent	67%, 58%, 49%
CMY	0.3255, 0.4237, 0.5137
CMYK	0.00, 0.15, 0.28, 0.33
HSL	29°, 22%, 58%
HSV	29°, 28%, 67%
XYZ	31.0783, 31.0798, 23.4298
YIQ	151.8530, 22.2830, -1.8530

Conversions

Conversions Part 2

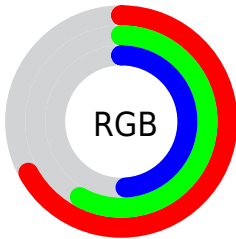
Format	Color
RYB	172, 168, 124
Decimal	11309948
CIELab	62.57, 5.78, 15.63
CIElCh	63, 16.660, 69.706
Yxy	31.0798, 0.3631, 0.3631
Android (android.graphics.Color)	4289500028 (0xFFAC937C)
YUV	151.8530, -13.7315, 17.6689
Hunter-Lab	55.7493, 1.9464, 14.1066

Details

The RYB color **172, 168, 124** is a dark color, and the websafe version is hex **CC9999**. A complement of this color would be **124, 140, 172**, and the grayscale version is **152, 152, 152**.

A 20% lighter version of the original color is **228, 222, 177**, and **119, 115, 75** is the 20% darker color. If you saturate the color by 10%, you get **172, 166, 107**, and if you desaturate by 10%, it is **172, 170, 141**.

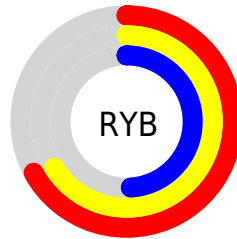
Distribution



Red (67%)

Green (58%)

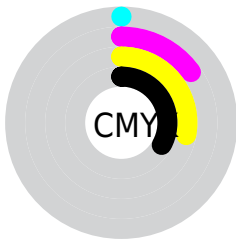
Blue (49%)



Red (67%)

Yellow (66%)

Blue (49%)

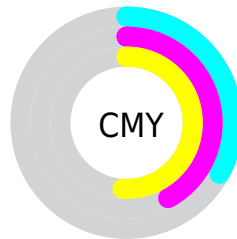


Cyan (0%)

Magenta (15%)

Yellow (28%)

Black (33%)



Cyan (33%)


Magenta (42%)

Yellow (51%)

Brightness & Saturation Gradients

These gradients show how the RYB color 172, 168, 124 changes by changing the brightness by 10 percent. The first figure shows a shift by +10% for each color and the second figure -10%.

Similar to the brightness gradients but the following saturation gradients show a change of the RYB color 172, 168, 124 by changing the saturation by 10% instead.


 172, 168, 124

255, 255, 255

 228, 222, 177

 255, 253, 204

 232, 255, 232

 172, 168, 124

 145, 141, 99

 119, 115, 75


 94, 94, 52

 69, 69, 31

 39, 46, 8


 24, 5, 0


 0, 0, 0

 172, 168, 124

 172, 166, 107


 172, 168, 124

 172, 170, 141


 172, 164, 90

 172, 172, 158

 172, 164, 72

 172, 173, 176

 172, 162, 55

 172, 179, 193


 172, 161, 38

 172, 185, 210

 172, 159, 21

 172, 191, 227

 172, 157, 4

 172, 197, 244

 172, 157, 0

 172, 202, 255

 172, 205, 255

Harmonies

Analogous

The Analogous color harmony consists of three colors that are next to each other on the color wheel.



181, 146, 133



172, 168, 124



129, 158, 122

Triad

The Triadic color harmony groups three colors that are evenly spaced from another and form a triangle on the color wheel.



172, 168, 124



114, 138, 160



160, 146, 174

Complementary

The Complementary color scheme is a pair of colors which are on the opposite of each other on the color wheel.



172, 168, 124



124, 140, 172

Split Complementary

Split-complementary colors differ from the complementary color scheme. The scheme consists of three colors, the original color and two neighbors of the complement color.



141, 149, 180



172, 168, 124



112, 138, 170

Square

The Square scheme is like the rectangle color scheme, but the four colors are evenly spaced on the color wheel.



172, 168, 124



125, 148, 159



123, 144, 179



175, 142, 162

Rectangle

The Rectangle color scheme consists of four colors that form a rectangle on the color wheel.



172, 168, 124



125, 155, 133



123, 144, 179



154, 148, 177

Sweetspot

The Sweet Spot groups the original color and five complimentary colors.



172, 168, 124



224, 224, 206



172, 124, 150



112, 110, 101



240, 240, 240



112, 112, 112

Same Dimension

The Same Dimension uses a secret algorithm to generate beautiful new colors.



172, 168, 124



224, 220, 150



126, 172, 124



87, 85, 78



150, 138, 0



23, 21, 0

Inverse Universe

The Inverse Universe completely reimagines the original color for something new.



124, 140, 172



150, 176, 224



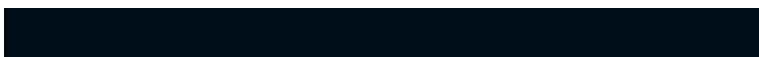
124, 126, 172



78, 81, 87



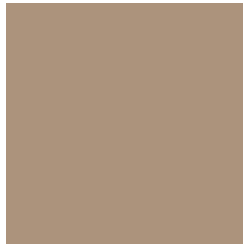
0, 51, 150



0, 8, 23

Previews

White Background



This preview shows how the RYB color 172, 168, 124 looks on a white background.

Color Contrast Check

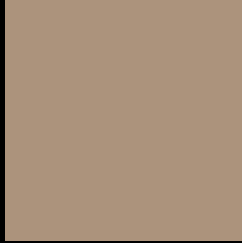
Large Text (above 18pt) WCAG AA × Fail

Any Text WCAG AA × Fail

Large Text (above 18pt) WCAG AAA × Fail

Any Text WCAG AAA × Fail

Black Background



This preview shows how the RYB color 172, 168, 124 looks on a black background.

Color Contrast Check

Large Text (above 18pt) WCAG AA ✓ Pass

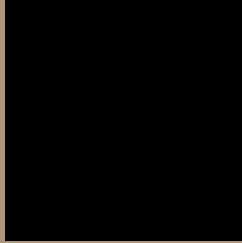
Any Text WCAG AA ✓ Pass

Large Text (above 18pt) WCAG AAA ✓ Pass

Any Text WCAG AAA ✓ Pass

If you want to check with other color combinations, try the [Color Contrast Checker](#).

RYB 172, 168, 124 Background



This preview shows how black text looks on a background with the RYB color 172, 168, 124.



This preview shows how white text looks on a background with the RYB color 172, 168, 124.

Color Blindness Simulation

Color vision deficiency is a very complex topic, and I could not describe the different causes any better than Wikipedia does, so if you want to learn more, you should check out their [article about color blindness](#).


Dichromacy



Original Color
172, 168, 124

Protanopia
138, 160, 126

Deuteranopia
176, 162, 124



Tritanopia
175, 143, 154

Trichromacy



Original Color

172, 168, 124

Protanomaly

147, 164, 125

Deuteranomaly

175, 163, 124

Tritanomaly

174, 144, 143

Monochromacy



Original Color

172, 168, 124

Achromatopsia

152, 152, 152

Achromatomaly

159, 157, 142

CSS Examples

Text

The CSS property to change the color of the text to RYB 172, 168, 124 is called "color". The color property can be set on classes, ids or directly on the HTML element.

This example shows how text in the color `rgb(172, 147, 124)` looks like.

```
.text, #text, p{  
    color:rgb(172, 147, 124)  
}
```

If you want to add a text shadow in that color use the text-shadow property, you can generate a text shadow directly with our [CSS Text Shadow Generator](#).

Here you see how black text with a 4 pixel rgb(172, 147, 124) colored shadow looks like.

```
.shadow{ text-shadow: 4px 4px 2px rgb(172, 147, 124) }
```

Border

The CSS property to change the border of an element to RYB 172, 168, 124 is called "border". The border property can be set on classes, ids or directly on the HTML element.

This example shows the color as border, it can be applied via the CSS property "border" or "border-color".

```
.border, #border, table{ border:4px solid rgb(172, 147, 124) }
```

If only the border color should be changed use the property `border-color`.

```
.border{ border-color:rgb(172, 147, 124) }
```

If you want to add a box shadow in that color use:

Here you see how a box with a 4 pixel `rgb(172, 147, 124)` colored shadow looks like.

```
.boxshadow{ -moz-box-shadow:4px 4px 4px  
4px rgb(172, 147, 124); -webkit-box-  
shadow:4px 4px 4px 4px rgb(172, 147, 124);  
box-shadow:4px 4px 4px 4px rgb(172, 147,  
124) }
```

Background

The CSS property to change the background color of an element to RYB 172, 168, 124 is called "background". The background property can be set on classes, ids or directly on the HTML element.

```
.background, #background, body{  
background: rgb(172, 147, 124) }
```

If only the background color should be changed can be used:

```
.background{ background-color: rgb(172,  
147, 124) }
```

This example shows the color as background, it is applied via the CSS property "background".

To optimize and compress your CSS code, you can use our [online CSS compressor and optimizer](#) based on csstidy. If you want to create a linear or radial gradient as background or border, check our [CSS Gradient Generator](#).

Hey! You found this booklet interesting? Support Converting Colors with the new Membership Option!

The pro membership hides all ads, plus gives you double the colors in the color bucket, and more awesome pro features!

[Learn more, Memberships starting at \\$2.50/m!](#)

**Follow me
on Twitter!**

@ConvertingColor