

Converting Colors

`RYB(173, 133, 133)`

Have a look what the booklet for
RYB(173, 133, 133) contains.

RYB(173, 133, 133)	3
<i>Conversions</i>	4
<i>Details</i>	6
<i>Harmonies</i>	11
<i>Previews</i>	23
<i>Color Blindness Simulation</i>	26
<i>CSS Examples</i>	29

Color

R_YB(173, 133, 133)

Conversions

Conversions Part 1

Format	Color
Hex	AD8585
RGB	173, 133, 133
RGB Percent	68%, 52%, 52%
CMY	0.3216, 0.4784, 0.4784
CMYK	0.00, 0.23, 0.23, 0.32
HSL	0°, 20%, 60%
HSV	0°, 23%, 68%
XYZ	29.8547, 27.3527, 25.8964
YIQ	144.9600, 23.8400, 8.4800

Conversions

Conversions Part 2

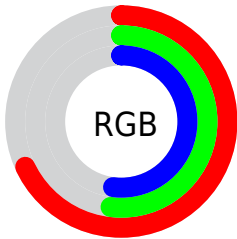
Format	Color
R_{YB}	173, 133, 133
Decimal	11371909
CIE _{Lab}	59.30, 15.32, 5.91
CIE _{LCh}	59, 16.417, 21.107
Yxy	27.3527, 0.3592, 0.3291
Android (android.graphics.Color)	4289561989 (0xFFAD8585)
YUV	144.9600, -5.8963, 24.5911
Hunter-Lab	52.2999, 10.3698, 7.2523

Details

The RYB color **173, 133, 133** is a dark color, and the websafe version is hex **CC9999**. A complement of this color would be **133, 153, 173**, and the grayscale version is **145, 145, 145**.

A 20% lighter version of the original color is **229, 186, 186**, and **120, 83, 84** is the 20% darker color. If you saturate the color by 10%, you get **173, 116, 116**, and if you desaturate by 10%, it is **173, 150, 150**.

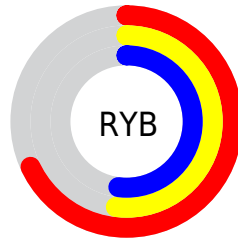
Distribution



Red (68%)

Green (52%)

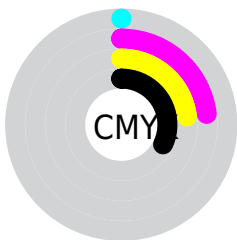
Blue (52%)



Red (68%)

Yellow (52%)

Blue (52%)

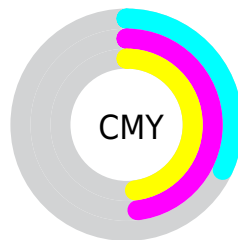


Cyan (0%)

Magenta (23%)

Yellow (23%)

Black (32%)



Cyan (32%)

Magenta (48%)

Yellow (48%)

Brightness & Saturation Gradients

These gradients show how the RYB color 173, 133, 133 changes by changing the brightness by 10 percent. The first figure shows a shift by +10% for each color and the second figure -10%.

Similar to the brightness gradients but the following saturation gradients show a change of the RYB color 173, 133, 133 by changing the saturation by 10% instead.

 173, 133, 133


255, 255, 255


 229, 186, 186

 255, 214, 214

 255, 242, 242

 173, 133, 133

 146, 108, 108

 120, 83, 84

 94, 60, 61

 70, 38, 39

 47, 17, 18

 25, 0, 1

 0, 0, 0

 173, 133, 133

 173, 116, 116

 173, 133, 133

 173, 150, 150

 173, 98, 98

 173, 168, 168

 173, 81, 81

 173, 179, 185

 173, 64, 64

 173, 188, 202

 173, 47, 47

 173, 197, 220

 173, 29, 29

 173, 205, 237

 173, 12, 12

 173, 214, 254

 173, 0, 0

 173, 214, 255

Harmonies

Analogous

The Analogous color harmony consists of three colors that are next to each other on the color wheel.



169, 133, 148



173, 133, 133



169, 143, 121

Triad

The Triadic color harmony groups three colors that are evenly spaced from another and form a triangle on the color wheel.



173, 133, 133



124, 149, 146



121, 137, 171

Complementary

The Complementary color scheme is a pair of colors which are on the opposite of each other on the color wheel.



173, 133, 133



133, 153, 173

Split Complementary

Split-complementary colors differ from the complementary color scheme. The scheme consists of three colors, the original color and two neighbors of the complement color.



107, 131, 165



173, 133, 133



112, 135, 151

Square

The Square scheme is like the rectangle color scheme, but the four colors are evenly spaced on the color wheel.



173, 133, 133



116, 145, 118



104, 128, 153



140, 141, 169

Rectangle

The Rectangle color scheme consists of four colors that form a rectangle on the color wheel.



173, 133, 133



162, 162, 116



104, 128, 153



115, 135, 170

Sweetspot

The Sweet Spot groups the original color and five complimentary colors.



173, 133, 133



224, 209, 209



173, 133, 173



112, 103, 103



240, 240, 240



112, 112, 112

Same Dimension

The Same Dimension uses a secret algorithm to generate beautiful new colors.



173, 133, 133



224, 162, 162



173, 173, 133



87, 78, 78



150, 0, 0



23, 0, 0

Inverse Universe

The Inverse Universe completely reimagines the original color for something new.



133, 153, 173



162, 193, 224



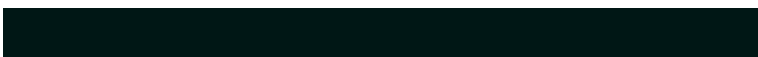
133, 146, 173



78, 83, 87



0, 75, 150



0, 12, 23

Previews

White Background



This preview shows how the RYB color 173, 133, 133 looks on a white background.

Color Contrast Check

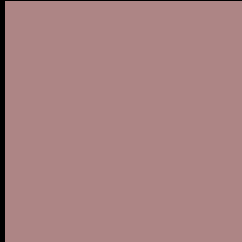
Large Text (above 18pt) WCAG AA ✓ Pass

Any Text WCAG AA × Fail

Large Text (above 18pt) WCAG AAA × Fail

Any Text WCAG AAA × Fail

Black Background



This preview shows how the RYB color 173, 133, 133 looks on a black background.

Color Contrast Check

Large Text (above 18pt) WCAG AA ✓ Pass

Any Text WCAG AA ✓ Pass

Large Text (above 18pt) WCAG AAA ✓ Pass

Any Text WCAG AAA × Fail

If you want to check with other color combinations, try the [Color Contrast Checker](#).

RYB 173, 133, 133 Background



This preview shows how black text looks on a background with the RYB color 173, 133, 133.



This preview shows how white text looks on a background with the RYB color 173, 133, 133.

Color Blindness Simulation

Color vision deficiency is a very complex topic, and I could not describe the different causes any better than Wikipedia does, so if you want to learn more, you should check out their [article about color blindness](#).

Dichromacy



Original Color
173, 133, 133

Protanopia
147, 145, 138

Deuteranopia
161, 140, 132



Tritanopia
174, 132, 142

Trichromacy



Original Color

173, 133, 133

Protanomaly

156, 140, 136

Deuteranomaly

165, 137, 132

Tritanomaly

174, 132, 139

Monochromacy



Original Color

173, 133, 133

Achromatopsia

145, 145, 145

Achromatomaly

155, 141, 141

CSS Examples

Text

The CSS property to change the color of the text to RYB 173, 133, 133 is called "color". The color property can be set on classes, ids or directly on the HTML element.

This example shows how text in the color rgb(173, 133, 133) looks like.

```
.text, #text, p{  
    color:rgb(173, 133, 133)  
}
```

If you want to add a text shadow in that color use the text-shadow property, you can generate a text shadow directly with our [CSS Text Shadow Generator](#).

Here you see how black text with a 4 pixel rgb(173, 133, 133) colored shadow looks like.

```
.shadow{ text-shadow: 4px 4px 2px rgb(173, 133, 133) }
```

Border

The CSS property to change the border of an element to RYB 173, 133, 133 is called "border". The border property can be set on classes, ids or directly on the HTML element.

This example shows the color as border, it can be applied via the CSS property "border" or "border-color".

```
.border, #border, table{ border:4px solid rgb(173, 133, 133) }
```

If only the border color should be changed use the property `border-color`.

```
.border{ border-color:rgb(173, 133, 133) }
```

If you want to add a box shadow in that color use:

Here you see how a box with a 4 pixel `rgb(173, 133, 133)` colored shadow looks like.

```
.boxshadow{ -moz-box-shadow:4px 4px 4px  
4px rgb(173, 133, 133); -webkit-box-  
shadow:4px 4px 4px 4px rgb(173, 133, 133);  
box-shadow:4px 4px 4px 4px rgb(173, 133,  
133) }
```

Background

The CSS property to change the background color of an element to RYB 173, 133, 133 is called "background". The background property can be set on classes, ids or directly on the HTML element.

```
.background, #background, body{  
background: rgb(173, 133, 133) }
```

If only the background color should be changed can be used:

```
.background{ background-color: rgb(173,  
133, 133) }
```

This example shows the color as background, it is applied via the CSS property "background".

To optimize and compress your CSS code, you can use our [online CSS compressor and optimizer](#) based on csstidy. If you want to create a linear or radial gradient as background or border, check our [CSS Gradient Generator](#).

Hey! You found this booklet interesting? Support Converting Colors with the new Membership Option!

The pro membership hides all ads, plus gives you double the colors in the color bucket, and more awesome pro features!

[Learn more, Memberships starting at \\$2.50/m!](#)

**Follow me
on Twitter!**

@ConvertingColor