

Converting Colors

`RYB(174, 131, 131)`

Have a look what the booklet for
RYB(174, 131, 131) contains.

RYB(174, 131, 131)	3
<i>Conversions</i>	4
<i>Details</i>	6
<i>Harmonies</i>	11
<i>Previews</i>	23
<i>Color Blindness Simulation</i>	26
<i>CSS Examples</i>	29

Color

R_YB(174, 131, 131)

Conversions

Conversions Part 1

Format	Color
Hex	AE8383
RGB	174, 131, 131
RGB Percent	68%, 51%, 51%
CMY	0.3176, 0.4863, 0.4863
CMYK	0.00, 0.25, 0.25, 0.32
HSL	0°, 21%, 60%
HSV	0°, 25%, 68%
XYZ	29.6686, 26.8700, 25.0954
YIQ	143.8570, 25.6280, 9.1160

Conversions

Conversions Part 2

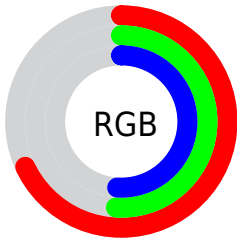
Format	Color
RYB	174, 131, 131
Decimal	11436931
CIELab	58.85, 16.53, 6.43
CIElCh	59, 17.737, 21.270
Yxy	26.8700, 0.3634, 0.3292
Android (android.graphics.Color)	4289627011 (0xFFAE8383)
YUV	143.8570, -6.3385, 26.4354
Hunter-Lab	51.8362, 11.4514, 7.5813

Details

The RYB color **174, 131, 131** is a dark color, and the websafe version is hex **CC9999**. A complement of this color would be **131, 153, 174**, and the grayscale version is **144, 144, 144**.

A 20% lighter version of the original color is **230, 184, 184**, and **121, 81, 82** is the 20% darker color. If you saturate the color by 10%, you get **174, 114, 114**, and if you desaturate by 10%, it is **174, 148, 148**.

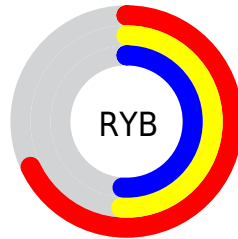
Distribution



Red (68%)

Green (51%)

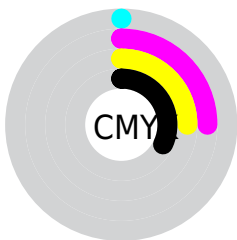
Blue (51%)



Red (68%)

Yellow (51%)

Blue (51%)

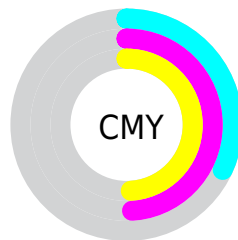


Cyan (0%)

Magenta (25%)

Yellow (25%)

Black (32%)



Cyan (32%)


Magenta (49%)

Yellow (49%)


Brightness & Saturation Gradients

These gradients show how the RYB color 174, 131, 131 changes by changing the brightness by 10 percent. The first figure shows a shift by +10% for each color and the second figure -10%.

Similar to the brightness gradients but the following saturation gradients show a change of the RYB color 174, 131, 131 by changing the saturation by 10% instead.


 174, 131, 131


255, 255, 255


 230, 184, 184

 255, 212, 212

 255, 240, 240

 174, 131, 131

 147, 106, 106

 121, 81, 82


 95, 58, 59


 70, 36, 37


 47, 15, 16


 24, 0, 1

 0, 0, 0

 174, 131, 131

 174, 114, 114


 174, 131, 131

 174, 148, 148

 174, 96, 96

 174, 166, 166

 174, 79, 79

 174, 179, 183

 174, 61, 61

 174, 188, 201

 174, 44, 44

 174, 196, 218

 174, 27, 27

 174, 205, 235

 174, 9, 9

 174, 214, 253

 174, 0, 0

 174, 215, 255

Harmonies

Analogous

The Analogous color harmony consists of three colors that are next to each other on the color wheel.



170, 131, 147



174, 131, 131



169, 141, 118

Triad

The Triadic color harmony groups three colors that are evenly spaced from another and form a triangle on the color wheel.



174, 131, 131



122, 148, 146



118, 136, 172

Complementary

The Complementary color scheme is a pair of colors which are on the opposite of each other on the color wheel.



174, 131, 131



131, 153, 174

Split Complementary

Split-complementary colors differ from the complementary color scheme. The scheme consists of three colors, the original color and two neighbors of the complement color.



102, 129, 165



174, 131, 131



108, 133, 150

Square

The Square scheme is like the rectangle color scheme, but the four colors are evenly spaced on the color wheel.



174, 131, 131



112, 144, 114



99, 125, 152



138, 139, 170

Rectangle

The Rectangle color scheme consists of four colors that form a rectangle on the color wheel.



174, 131, 131



162, 160, 113



99, 125, 152



112, 134, 171

Sweetspot

The Sweet Spot groups the original color and five complimentary colors.



174, 131, 131



227, 211, 211



174, 131, 174



115, 106, 106



242, 242, 242



115, 115, 115

Same Dimension

The Same Dimension uses a secret algorithm to generate beautiful new colors.



174, 131, 131



227, 159, 159



172, 174, 131



87, 78, 78



150, 0, 0



23, 0, 0

Inverse Universe

The Inverse Universe completely reimagines the original color for something new.



131, 153, 174



159, 193, 227



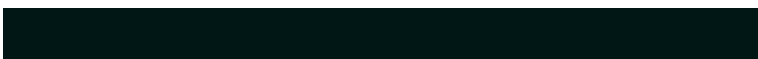
131, 146, 174



78, 83, 87



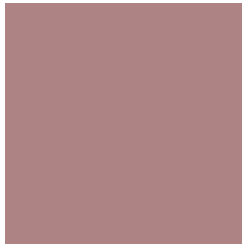
0, 75, 150



0, 12, 23

Previews

White Background



This preview shows how the RYB color 174, 131, 131 looks on a white background.

Color Contrast Check

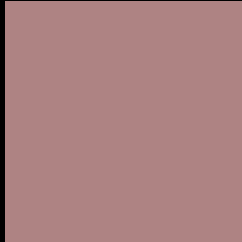
Large Text (above 18pt) WCAG AA ✓ Pass

Any Text WCAG AA × Fail

Large Text (above 18pt) WCAG AAA × Fail

Any Text WCAG AAA × Fail

Black Background



This preview shows how the RYB color 174, 131, 131 looks on a black background.

Color Contrast Check

Large Text (above 18pt) WCAG AA ✓ Pass

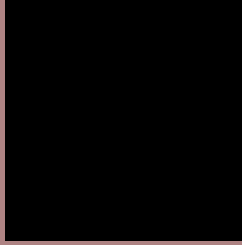
Any Text WCAG AA ✓ Pass

Large Text (above 18pt) WCAG AAA ✓ Pass

Any Text WCAG AAA × Fail

If you want to check with other color combinations, try the [Color Contrast Checker](#).

RYB 174, 131, 131 Background



This preview shows how black text looks on a background with the RYB color 174, 131, 131.



This preview shows how white text looks on a background with the RYB color 174, 131, 131.

Color Blindness Simulation

Color vision deficiency is a very complex topic, and I could not describe the different causes any better than Wikipedia does, so if you want to learn more, you should check out their [article about color blindness](#).


Dichromacy



Original Color
174, 131, 131

Protanopia
146, 144, 137

Deuteranopia
160, 139, 130



Tritanopia
175, 130, 140

Trichromacy



Original Color

174, 131, 131

Protanomaly

156, 137, 135

Deuteranomaly

165, 136, 130

Tritanomaly

175, 130, 137

Monochromacy



Original Color

174, 131, 131

Achromatopsia

144, 144, 144

Achromatomaly

155, 139, 139

CSS Examples

Text

The CSS property to change the color of the text to RYB 174, 131, 131 is called "color". The color property can be set on classes, ids or directly on the HTML element.

This example shows how text in the color `rgb(174, 131, 131)` looks like.

```
.text, #text, p{  
    color:rgb(174, 131, 131)  
}
```

If you want to add a text shadow in that color use the text-shadow property, you can generate a text shadow directly with our [CSS Text Shadow Generator](#).

Here you see how black text with a 4 pixel rgb(174, 131, 131) colored shadow looks like.

```
.shadow{ text-shadow: 4px 4px 2px rgb(174, 131, 131) }
```

Border

The CSS property to change the border of an element to RYB 174, 131, 131 is called "border". The border property can be set on classes, ids or directly on the HTML element.

This example shows the color as border, it can be applied via the CSS property "border" or "border-color".

```
.border, #border, table{ border:4px solid rgb(174, 131, 131) }
```

If only the border color should be changed use the property `border-color`.

```
.border{ border-color:rgb(174, 131, 131) }
```

If you want to add a box shadow in that color use:

Here you see how a box with a 4 pixel `rgb(174, 131, 131)` colored shadow looks like.

```
.boxshadow{ -moz-box-shadow:4px 4px 4px  
4px rgb(174, 131, 131); -webkit-box-  
shadow:4px 4px 4px 4px rgb(174, 131, 131);  
box-shadow:4px 4px 4px 4px rgb(174, 131,  
131) }
```

Background

The CSS property to change the background color of an element to RYB 174, 131, 131 is called "background". The background property can be set on classes, ids or directly on the HTML element.

```
.background, #background, body{  
background: rgb(174, 131, 131) }
```

If only the background color should be changed can be used:

```
.background{ background-color: rgb(174,  
131, 131) }
```

This example shows the color as background, it is applied via the CSS property "background".

To optimize and compress your CSS code, you can use our [online CSS compressor and optimizer](#) based on csstidy. If you want to create a linear or radial gradient as background or border, check our [CSS Gradient Generator](#).

Hey! You found this booklet interesting? Support Converting Colors with the new Membership Option!

The pro membership hides all ads, plus gives you double the colors in the color bucket, and more awesome pro features!

[Learn more, Memberships starting at \\$2.50/m!](#)

**Follow me
on Twitter!**

@ConvertingColor