

# Converting Colors

`RYB(175, 121, 124)`

Have a look what the booklet for  
RYB(175, 121, 124) contains.

<b>RYB(175, 121, 124)</b> .....	3
<i><b>Conversions</b></i> .....	4
<i><b>Details</b></i> .....	6
<i><b>Harmonies</b></i> .....	11
<i><b>Previews</b></i> .....	23
<i><b>Color Blindness Simulation</b></i> .....	26
<i><b>CSS Examples</b></i> .....	29

# Color

**R<sub>Y</sub>B(175, 121, 124)**

# Conversions

## Conversions Part 1

<b>Format</b>	<b>Color</b>
Hex	AF797C
RGB	175, 121, 124
RGB Percent	69%, 47%, 49%
CMY	0.3137, 0.5255, 0.5137
CMYK	0.00, 0.31, 0.29, 0.31
HSL	357°, 25%, 58%
HSV	357°, 31%, 69%
XYZ	28.1547, 24.2439, 22.2644
YIQ	137.4880, 31.2210, 12.3810

# Conversions

## Conversions Part 2

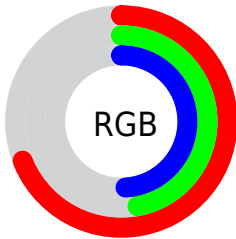
<b>Format</b>	<b>Color</b>
<b>R<sub>YB</sub></b>	175, 121, 124
Decimal	11499900
CIE <sub>Lab</sub>	56.33, 21.53, 6.88
CIE <sub>LCh</sub>	56, 22.605, 17.724
Yxy	24.2439, 0.3771, 0.3247
Android (android.graphics.Color)	4289689980 (0xFFAF797C)
YUV	137.4880, -6.6496, 32.8980
Hunter-Lab	49.2381, 15.9006, 7.6570

# Details

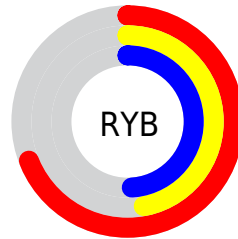
The RYB color **175, 121, 124** is a dark color, and the websafe version is hex **996666**. A complement of this color would be **121, 149, 175**, and the grayscale version is **138, 138, 138**.

A 20% lighter version of the original color is **232, 174, 176**, and **121, 72, 75** is the 20% darker color. If you saturate the color by 10%, you get **175, 104, 107**, and if you desaturate by 10%, it is **175, 139, 141**.

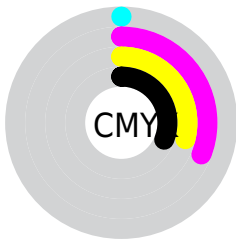
# Distribution



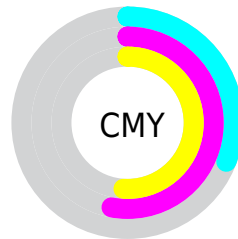
- Red (69%)
- Green (47%)
- Blue (49%)



- Red (69%)
- Yellow (47%)
- Blue (49%)



- Cyan (0%)
- Magenta (31%)
- Yellow (29%)
- Black (31%)



- Cyan (31%)
- Magenta (53%)
- Yellow (51%)

# Brightness & Saturation Gradients

These gradients show how the RYB color 175, 121, 124 changes by changing the brightness by 10 percent. The first figure shows a shift by +10% for each color and the second figure -10%.

Similar to the brightness gradients but the following saturation gradients show a change of the RYB color 175, 121, 124 by changing the saturation by 10% instead.



 175, 121, 124

255, 255, 255


 232, 174, 176

 255, 201, 204


 255, 229, 232

 175, 121, 124

 148, 96, 99

 121, 72, 75

 95, 49, 53

 70, 26, 32

 47, 4, 7


 14, 0, 0

 0, 0, 0

 175, 121, 124

 175, 104, 107

 175, 121, 124

 175, 139, 141

 175, 86, 91

 175, 156, 157


 175, 68, 74

 175, 174, 174

 175, 51, 58

 175, 183, 191

 175, 33, 41

 175, 192, 208

 175, 16, 25

 175, 201, 226

 175, 0, 10

 175, 211, 244

 175, 215, 255

# Harmonies

## Analogous

The Analogous color harmony consists of three colors that are next to each other on the color wheel.



169, 121, 144



175, 121, 124



170, 132, 107

# Triad

The Triadic color harmony groups three colors that are evenly spaced from another and form a triangle on the color wheel.



175, 121, 124



108, 143, 136



99, 125, 173

# Complementary

The Complementary color scheme is a pair of colors which are on the opposite of each other on the color wheel.



175, 121, 124



121, 149, 175

# Split Complementary

Split-complementary colors differ from the complementary color scheme. The scheme consists of three colors, the original color and two neighbors of the complement color.



79, 116, 163



175, 121, 124



93, 126, 146

# Square

The Square scheme is like the rectangle color scheme, but the four colors are evenly spaced on the color wheel.



175, 121, 124



97, 138, 98



77, 112, 146



127, 132, 172

# Rectangle

The Rectangle color scheme consists of four colors that form a rectangle on the color wheel.



175, 121, 124



162, 156, 99



77, 112, 146



91, 122, 171



# Sweetspot

The Sweet Spot groups the original color and five complimentary colors.



175, 121, 124



227, 207, 208



171, 121, 175



115, 102, 103



242, 242, 242



115, 115, 115



# Same Dimension

The Same Dimension uses a secret algorithm to generate beautiful new colors.



175, 121, 124



227, 143, 148



175, 161, 121



87, 78, 79



150, 0, 8



23, 0, 1



# Inverse Universe

The Inverse Universe completely reimagines the original color for something new.



175, 121, 124



227, 143, 148



121, 141, 175



87, 78, 79



150, 0, 8

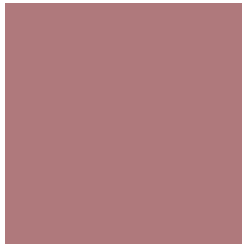


23, 0, 1



# Previews

## White Background



This preview shows how the RYB color 175, 121, 124 looks on a white background.

## Color Contrast Check

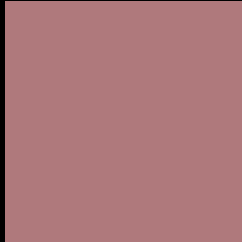
Large Text (above 18pt) WCAG AA ✓ Pass

Any Text WCAG AA × Fail

Large Text (above 18pt) WCAG AAA × Fail

Any Text WCAG AAA × Fail

# Black Background



This preview shows how the RYB color 175, 121, 124 looks on a black background.

## Color Contrast Check

Large Text (above 18pt) WCAG AA ✓ Pass

Any Text WCAG AA ✓ Pass

Large Text (above 18pt) WCAG AAA ✓ Pass

Any Text WCAG AAA × Fail

If you want to check with other color combinations, try the [Color Contrast Checker](#).



## **RYB 175, 121, 124 Background**



This preview shows how black text looks on a background with the RYB color 175, 121, 124.



This preview shows how white text looks on a background with the RYB color 175, 121, 124.

# Color Blindness Simulation

Color vision deficiency is a very complex topic, and I could not describe the different causes any better than Wikipedia does, so if you want to learn more, you should check out their [article about color blindness](#).

## Dichromacy



**Original Color**  
175, 121, 124

**Protanopia**  
139, 137, 132

**Deuteranopia**  
153, 135, 122



**Tritanopia**  
176, 120, 129

# Trichromacy



**Original Color**

175, 121, 124

**Protanomaly**

152, 130, 129

**Deuteranomaly**

161, 127, 123

**Tritanomaly**

176, 120, 127

# Monochromacy



**Original Color**

175, 121, 124

**Achromatopsia**

137, 137, 137

**Achromatomaly**

151, 131, 132

# CSS Examples

## Text

The CSS property to change the color of the text to RYB 175, 121, 124 is called "color". The color property can be set on classes, ids or directly on the HTML element.

This example shows how text in the color rgb(175, 121, 124) looks like.

```
.text, #text, p{  
    color:rgb(175, 121, 124)  
}
```

If you want to add a text shadow in that color use the text-shadow property, you can generate a text shadow directly with our [CSS Text Shadow Generator](#).

Here you see how black text with a 4 pixel rgb(175, 121, 124) colored shadow looks like.

```
.shadow{ text-shadow: 4px 4px 2px rgb(175, 121, 124) }
```

## Border

The CSS property to change the border of an element to RYB 175, 121, 124 is called "border". The border property can be set on classes, ids or directly on the HTML element.

This example shows the color as border, it can be applied via the CSS property "border" or "border-color".

```
.border, #border, table{ border:4px solid rgb(175, 121, 124) }
```

If only the border color should be changed use the property `border-color`.

```
.border{ border-color:rgb(175, 121, 124) }
```

If you want to add a box shadow in that color use:

Here you see how a box with a 4 pixel `rgb(175, 121, 124)` colored shadow looks like.

```
.boxshadow{ -moz-box-shadow:4px 4px 4px  
4px rgb(175, 121, 124); -webkit-box-  
shadow:4px 4px 4px 4px rgb(175, 121, 124);  
box-shadow:4px 4px 4px 4px rgb(175, 121,  
124) }
```

# Background

The CSS property to change the background color of an element to RYB 175, 121, 124 is called "background". The background property can be set on classes, ids or directly on the HTML element.

```
.background, #background, body{  
background: rgb(175, 121, 124) }
```

If only the background color should be changed can be used:

```
.background{ background-color: rgb(175,  
121, 124) }
```

This example shows the color as background, it is applied via the CSS property "background".

To optimize and compress your CSS code, you can use our [online CSS compressor and optimizer](#) based on csstidy. If you want to create a linear or radial gradient as background or border, check our [CSS Gradient Generator](#).



Hey! You found this booklet interesting? Support Converting Colors with the new Membership Option!

The pro membership hides all ads, plus gives you double the colors in the color bucket, and more awesome pro features!

**[Learn more, Memberships starting at \\$2.50/m!](#)**

**Follow me  
on Twitter!**

@ConvertingColor