

Converting Colors

`RYB(175, 124, 106)`

Have a look what the booklet for
RYB(175, 124, 106) contains.

RYB(175, 124, 106)	3
<i>Conversions</i>	4
<i>Details</i>	6
<i>Harmonies</i>	11
<i>Previews</i>	23
<i>Color Blindness Simulation</i>	26
<i>CSS Examples</i>	29

Color

R_YB(175, 124, 106)

Conversions

Conversions Part 1

Format	Color
Hex	AF786A
RGB	175, 120, 106
RGB Percent	69%, 47%, 42%
CMY	0.3137, 0.5283, 0.5843
CMYK	0.00, 0.31, 0.39, 0.31
HSL	12°, 30%, 55%
HSV	12°, 39%, 69%
XYZ	27.0304, 23.6540, 16.7767
YIQ	134.8490, 37.2740, 7.3060

Conversions

Conversions Part 2

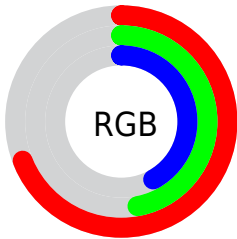
Format	Color
R_{YB}	175, 124, 106
Decimal	11499626
CIE _{Lab}	55.74, 19.58, 16.47
CIE _{LCh}	56, 25.588, 40.060
Yxy	23.6540, 0.4007, 0.3506
Android (android.graphics.Color)	4289689706 (0xFFAF786A)
YUV	134.8490, -14.2226, 35.2124
Hunter-Lab	48.6353, 14.0944, 13.5927

Details

The RYB color **175, 124, 106** is a dark color, and the websafe version is hex **996666**. A complement of this color would be **106, 137, 175**, and the grayscale version is **135, 135, 135**.

A 20% lighter version of the original color is **232, 177, 157**, and **120, 74, 59** is the 20% darker color. If you saturate the color by 10%, you get **175, 110, 89**, and if you desaturate by 10%, it is **175, 136, 124**.

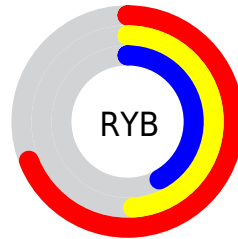
Distribution



Red (69%)

Green (47%)

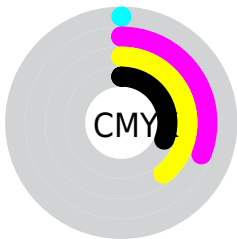
Blue (42%)



Red (69%)

Yellow (49%)

Blue (42%)

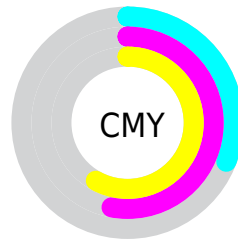


Cyan (0%)

Magenta (31%)

Yellow (39%)

Black (31%)



Cyan (31%)

Magenta (53%)

Yellow (58%)

Brightness & Saturation Gradients

These gradients show how the RYB color 175, 124, 106 changes by changing the brightness by 10 percent. The first figure shows a shift by +10% for each color and the second figure -10%.

Similar to the brightness gradients but the following saturation gradients show a change of the RYB color 175, 124, 106 by changing the saturation by 10% instead.

 175, 124, 106

255, 255, 255

 232, 177, 157

 255, 205, 184

 255, 240, 212

 240, 255, 240

 175, 124, 106

 175, 110, 89

 175, 124, 106

 147, 98, 82

 120, 74, 59

 94, 51, 37


 69, 28, 16

 45, 4, 0

 3, 0, 0

 0, 0, 0

 175, 124, 106

 175, 136, 124

175, 99, 71

175, 150, 141

175, 86, 54

175, 163, 159

175, 73, 36

175, 176, 176

175, 59, 19

175, 183, 194

175, 46, 1

175, 191, 211

175, 45, 0

175, 199, 229

175, 206, 246

175, 212, 255

Harmonies

Analogous

The Analogous color harmony consists of three colors that are next to each other on the color wheel.



178, 117, 127



175, 124, 106



162, 162, 92

Triad

The Triadic color harmony groups three colors that are evenly spaced from another and form a triangle on the color wheel.



175, 124, 106



91, 127, 145



116, 129, 177

Complementary

The Complementary color scheme is a pair of colors which are on the opposite of each other on the color wheel.



175, 124, 106



106, 137, 175

Split Complementary

Split-complementary colors differ from the complementary color scheme. The scheme consists of three colors, the original color and two neighbors of the complement color.



83, 118, 175



175, 124, 106



68, 109, 146

Square

The Square scheme is like the rectangle color scheme, but the four colors are evenly spaced on the color wheel.



175, 124, 106



99, 141, 123



62, 107, 161



146, 125, 168

Rectangle

The Rectangle color scheme consists of four colors that form a rectangle on the color wheel.



175, 124, 106



113, 149, 89



62, 107, 161



104, 126, 178

Sweetspot

The Sweet Spot groups the original color and five complimentary colors.



175, 124, 106



227, 206, 200



175, 106, 161



115, 103, 99



242, 242, 242



115, 115, 115

Same Dimension

The Same Dimension uses a secret algorithm to generate beautiful new colors.



175, 124, 106



227, 148, 120



136, 175, 106



87, 81, 78



150, 39, 0



23, 6, 0

Inverse Universe

The Inverse Universe completely reimagines the original color for something new.



106, 137, 175



120, 167, 227



106, 122, 175



78, 82, 87



0, 66, 150



0, 10, 23

Previews

White Background



This preview shows how the RYB color 175, 124, 106 looks on a white background.

Color Contrast Check

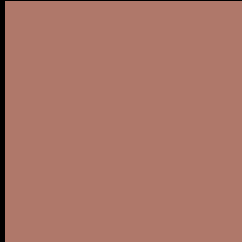
Large Text (above 18pt) WCAG AA ✓ Pass

Any Text WCAG AA × Fail

Large Text (above 18pt) WCAG AAA × Fail

Any Text WCAG AAA × Fail

Black Background



This preview shows how the RYB color 175, 124, 106 looks on a black background.

Color Contrast Check

Large Text (above 18pt) WCAG AA ✓ Pass

Any Text WCAG AA ✓ Pass

Large Text (above 18pt) WCAG AAA ✓ Pass

Any Text WCAG AAA × Fail

If you want to check with other color combinations, try the [Color Contrast Checker](#).

RYB 175, 124, 106 Background



This preview shows how black text looks on a background with the RYB color 175, 124, 106.

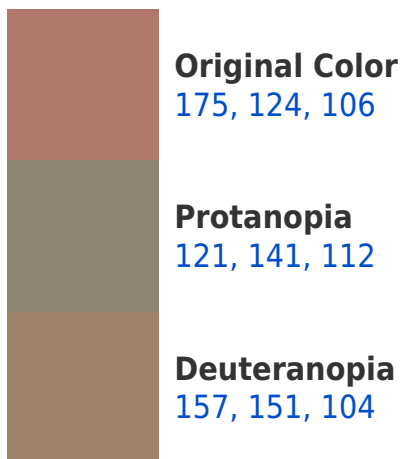


This preview shows how white text looks on a background with the RYB color 175, 124, 106.

Color Blindness Simulation

Color vision deficiency is a very complex topic, and I could not describe the different causes any better than Wikipedia does, so if you want to learn more, you should check out their [article about color blindness](#).

Dichromacy





Tritanopia
177, 117, 126

Trichromacy



Original Color

175, 124, 106

Protanomaly

153, 144, 110

Deuteranomaly

164, 138, 105

Tritanomaly

176, 118, 119

Monochromacy



Original Color

175, 124, 106

Achromatopsia

135, 135, 135

Achromatomaly

150, 132, 124

CSS Examples

Text

The CSS property to change the color of the text to RYB 175, 124, 106 is called "color". The color property can be set on classes, ids or directly on the HTML element.

This example shows how text in the color `rgb(175, 120, 106)` looks like.

```
.text, #text, p{  
    color:rgb(175, 120, 106)  
}
```

If you want to add a text shadow in that color use the text-shadow property, you can generate a text shadow directly with our [CSS Text Shadow Generator](#).

Here you see how black text with a 4 pixel rgb(175, 120, 106) colored shadow looks like.

```
.shadow{ text-shadow: 4px 4px 2px rgb(175, 120, 106) }
```

Border

The CSS property to change the border of an element to RYB 175, 124, 106 is called "border". The border property can be set on classes, ids or directly on the HTML element.

This example shows the color as border, it can be applied via the CSS property "border" or "border-color".

```
.border, #border, table{ border:4px solid rgb(175, 120, 106) }
```

If only the border color should be changed use the property `border-color`.

```
.border{ border-color:rgb(175, 120, 106) }
```

If you want to add a box shadow in that color use:

Here you see how a box with a 4 pixel `rgb(175, 120, 106)` colored shadow looks like.

```
.boxshadow{ -moz-box-shadow:4px 4px 4px  
4px rgb(175, 120, 106); -webkit-box-  
shadow:4px 4px 4px 4px rgb(175, 120, 106);  
box-shadow:4px 4px 4px 4px rgb(175, 120,  
106) }
```

Background

The CSS property to change the background color of an element to RYB 175, 124, 106 is called "background". The background property can be set on classes, ids or directly on the HTML element.

```
.background, #background, body{  
background: rgb(175, 120, 106) }
```

If only the background color should be changed can be used:

```
.background{ background-color: rgb(175,  
120, 106) }
```

This example shows the color as background, it is applied via the CSS property "background".

To optimize and compress your CSS code, you can use our [online CSS compressor and optimizer](#) based on csstidy. If you want to create a linear or radial gradient as background or border, check our [CSS Gradient Generator](#).

Hey! You found this booklet interesting? Support Converting Colors with the new Membership Option!

The pro membership hides all ads, plus gives you double the colors in the color bucket, and more awesome pro features!

[Learn more, Memberships starting at \\$2.50/m!](#)

**Follow me
on Twitter!**

@ConvertingColor