

Converting Colors

`RYB(175, 132, 142)`

Have a look what the booklet for
RYB(175, 132, 142) contains.

RYB(175, 132, 142)	3
<i>Conversions</i>	4
<i>Details</i>	6
<i>Harmonies</i>	11
<i>Previews</i>	23
<i>Color Blindness Simulation</i>	26
<i>CSS Examples</i>	29

Color

R_YB(175, 132, 142)

Conversions

Conversions Part 1

Format	Color
Hex	AF848E
RGB	175, 132, 142
RGB Percent	69%, 52%, 56%
CMY	0.3137, 0.4824, 0.4431
CMYK	0.00, 0.25, 0.19, 0.31
HSL	346°, 21%, 60%
HSV	346°, 25%, 69%
XYZ	30.8129, 27.5695, 29.2886
YIQ	145.9970, 22.4180, 12.2260

Conversions

Conversions Part 2

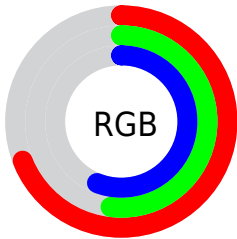
Format	Color
RYB	175, 132, 142
Decimal	11502734
CIELab	59.50, 18.06, 1.06
CIELCh	59, 18.090, 3.371
Yxy	27.5695, 0.3515, 0.3145
Android (android.graphics.Color)	4289692814 (0xFFAF848E)
YUV	145.9970, -1.9705, 25.4356
Hunter-Lab	52.5066, 12.8641, 3.6822

Details

The RYB color **175, 132, 142** is a dark color, and the websafe version is hex **CC9999**. A complement of this color would be **132, 156, 175**, and the grayscale version is **146, 146, 146**.

A 20% lighter version of the original color is **231, 185, 196**, and **122, 82, 92** is the 20% darker color. If you saturate the color by 10%, you get **175, 115, 129**, and if you desaturate by 10%, it is **175, 150, 155**.

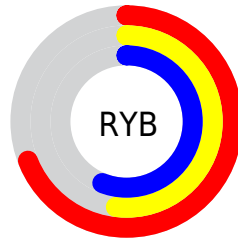
Distribution



Red (69%)

Green (52%)

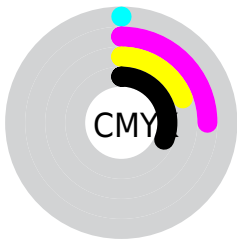
Blue (56%)



Red (69%)

Yellow (52%)

Blue (56%)

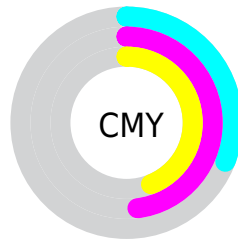


Cyan (0%)

Magenta (25%)

Yellow (19%)

Black (31%)



Cyan (31%)

Magenta (48%)

Yellow (44%)

Brightness & Saturation Gradients

These gradients show how the RYB color 175, 132, 142 changes by changing the brightness by 10 percent. The first figure shows a shift by +10% for each color and the second figure -10%.

Similar to the brightness gradients but the following saturation gradients show a change of the RYB color 175, 132, 142 by changing the saturation by 10% instead.

 175, 132, 142

255, 255, 255

 231, 185, 196

 255, 213, 224

 255, 242, 252


 175, 132, 142

 148, 107, 116

 122, 82, 92

 96, 59, 68

 72, 37, 46

 48, 15, 26

 29, 0, 1

 0, 0, 0

 175, 132, 142

 175, 115, 129

 175, 132, 142

 175, 150, 155

 175, 97, 115

 175, 167, 169

 175, 80, 102

 175, 181, 185

 175, 62, 88

 175, 190, 202

 175, 45, 75

 175, 201, 220

 175, 27, 61

 175, 210, 237

 175, 10, 48

 175, 220, 255

 175, 0, 41

 175, 217, 255

 175, 215, 255

Harmonies

Analogous

The Analogous color harmony consists of three colors that are next to each other on the color wheel.



166, 134, 158



175, 132, 142



175, 134, 127

Triad

The Triadic color harmony groups three colors that are evenly spaced from another and form a triangle on the color wheel.



175, 132, 142



116, 148, 128



108, 133, 171

Complementary

The Complementary color scheme is a pair of colors which are on the opposite of each other on the color wheel.



175, 132, 142



132, 156, 175

Split Complementary

Split-complementary colors differ from the complementary color scheme. The scheme consists of three colors, the original color and two neighbors of the complement color.



99, 127, 160



175, 132, 142



118, 143, 151

Square

The Square scheme is like the rectangle color scheme, but the four colors are evenly spaced on the color wheel.



175, 132, 142



127, 154, 112



104, 130, 152



127, 140, 175

Rectangle

The Rectangle color scheme consists of four colors that form a rectangle on the color wheel.



175, 132, 142



171, 145, 118



104, 130, 152



104, 131, 168

Sweetspot

The Sweet Spot groups the original color and five complimentary colors.



175, 132, 142



227, 211, 215



165, 132, 175



115, 106, 108



242, 242, 242



115, 115, 115

Same Dimension

The Same Dimension uses a secret algorithm to generate beautiful new colors.



175, 132, 142



227, 161, 176



175, 147, 132



87, 78, 80



150, 0, 35



23, 0, 5

Inverse Universe

The Inverse Universe completely reimagines the original color for something new.



175, 132, 142



227, 161, 176



132, 150, 175



87, 78, 80



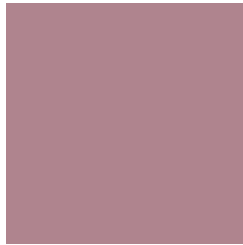
150, 0, 35



23, 0, 5

Previews

White Background



This preview shows how the RYB color 175, 132, 142 looks on a white background.

Color Contrast Check

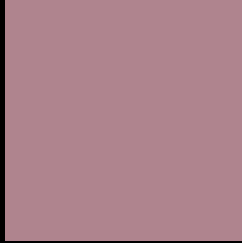
Large Text (above 18pt) WCAG AA ✓ Pass

Any Text WCAG AA ✗ Fail

Large Text (above 18pt) WCAG AAA ✗ Fail

Any Text WCAG AAA ✗ Fail

Black Background



This preview shows how the RYB color 175, 132, 142 looks on a black background.

Color Contrast Check

Large Text (above 18pt) WCAG AA ✓ Pass

Any Text WCAG AA ✓ Pass

Large Text (above 18pt) WCAG AAA ✓ Pass

Any Text WCAG AAA × Fail

If you want to check with other color combinations, try the [Color Contrast Checker](#).

RYP 175, 132, 142 Background



This preview shows how black text looks on a background with the RYP color 175, 132, 142.



This preview shows how white text looks on a background with the RYP color 175, 132, 142.

Color Blindness Simulation

Color vision deficiency is a very complex topic, and I could not describe the different causes any better than Wikipedia does, so if you want to learn more, you should check out their [article about color blindness](#).


Dichromacy



Original Color
175, 132, 142

Protanopia
145, 143, 148

Deuteranopia
158, 139, 141



Tritanopia
175, 132, 142

Trichromacy



Original Color

175, 132, 142

Protanomaly

156, 139, 146

Deuteranomaly

164, 136, 141

Tritanomaly

175, 132, 142

Monochromacy



Original Color

175, 132, 142

Achromatopsia

146, 146, 146

Achromatomaly

157, 141, 145

CSS Examples

Text

The CSS property to change the color of the text to RYB 175, 132, 142 is called "color". The color property can be set on classes, ids or directly on the HTML element.

This example shows how text in the color rgb(175, 132, 142) looks like.

```
.text, #text, p{  
    color:rgb(175, 132, 142)  
}
```

If you want to add a text shadow in that color use the text-shadow property, you can generate a text shadow directly with our [CSS Text Shadow Generator](#).

Here you see how black text with a 4 pixel rgb(175, 132, 142) colored shadow looks like.

```
.shadow{ text-shadow: 4px 4px 2px rgb(175, 132, 142) }
```

Border

The CSS property to change the border of an element to RYB 175, 132, 142 is called "border". The border property can be set on classes, ids or directly on the HTML element.

This example shows the color as border, it can be applied via the CSS property "border" or "border-color".

```
.border, #border, table{ border:4px solid rgb(175, 132, 142) }
```

If only the border color should be changed use the property `border-color`.

```
.border{ border-color:rgb(175, 132, 142) }
```

If you want to add a box shadow in that color use:

Here you see how a box with a 4 pixel `rgb(175, 132, 142)` colored shadow looks like.

```
.boxshadow{ -moz-box-shadow:4px 4px 4px  
4px rgb(175, 132, 142); -webkit-box-  
shadow:4px 4px 4px 4px rgb(175, 132, 142);  
box-shadow:4px 4px 4px 4px rgb(175, 132,  
142) }
```

Background

The CSS property to change the background color of an element to RYB 175, 132, 142 is called "background". The background property can be set on classes, ids or directly on the HTML element.

```
.background, #background, body{  
background: rgb(175, 132, 142) }
```

If only the background color should be changed can be used:

```
.background{ background-color: rgb(175,  
132, 142) }
```

This example shows the color as background, it is applied via the CSS property "background".

To optimize and compress your CSS code, you can use our [online CSS compressor and optimizer](#) based on csstidy. If you want to create a linear or radial gradient as background or border, check our [CSS Gradient Generator](#).

Hey! You found this booklet interesting? Support Converting Colors with the new Membership Option!

The pro membership hides all ads, plus gives you double the colors in the color bucket, and more awesome pro features!

[Learn more, Memberships starting at \\$2.50/m!](#)

**Follow me
on Twitter!**

@ConvertingColor