

Converting Colors

`RYB(175, 140, 140)`

Have a look what the booklet for
RYB(175, 140, 140) contains.

RYB(175, 140, 140)	3
<i>Conversions</i>	4
<i>Details</i>	6
<i>Harmonies</i>	11
<i>Previews</i>	23
<i>Color Blindness Simulation</i>	26
<i>CSS Examples</i>	29

Color

R_YB(175, 140, 140)

Conversions

Conversions Part 1

Format	Color
Hex	AF8C8C
RGB	175, 140, 140
RGB Percent	69%, 55%, 55%
CMY	0.3137, 0.4510, 0.4510
CMYK	0.00, 0.20, 0.20, 0.31
HSL	0°, 18%, 62%
HSV	0°, 20%, 69%
XYZ	31.7909, 29.7636, 28.8803
YIQ	150.4650, 20.8600, 7.4200

Conversions

Conversions Part 2

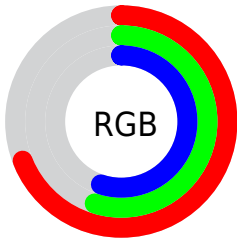
Format	Color
R _Y B	175, 140, 140
Decimal	11504780
CIE Lab	61.45, 13.24, 5.03
CIE LCh	61, 14.165, 20.807
Yxy	29.7636, 0.3515, 0.3291
Android (android.graphics.Color)	4289694860 (0xFFAF8C8C)
YUV	150.4650, -5.1592, 21.5172
Hunter-Lab	54.5560, 8.5426, 6.8028

Details

The RYB color **175, 140, 140** is a dark color, and the websafe version is hex **CC9999**. A complement of this color would be **140, 158, 175**, and the grayscale version is **151, 151, 151**.

A 20% lighter version of the original color is **231, 194, 193**, and **122, 90, 90** is the 20% darker color. If you saturate the color by 10%, you get **175, 123, 123**, and if you desaturate by 10%, it is **175, 158, 158**.

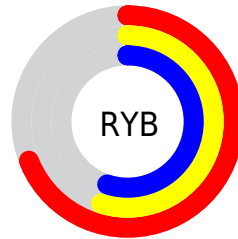
Distribution



Red (69%)

Green (55%)

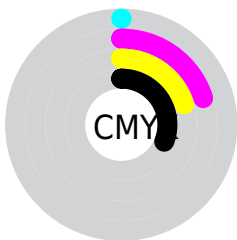
Blue (55%)



Red (69%)

Yellow (55%)

Blue (55%)

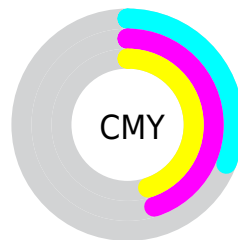


Cyan (0%)

Magenta (20%)

Yellow (20%)

Black (31%)



Cyan (31%)

Magenta (45%)

Yellow (45%)

Brightness & Saturation Gradients

These gradients show how the RYB color 175, 140, 140 changes by changing the brightness by 10 percent. The first figure shows a shift by +10% for each color and the second figure -10%.

Similar to the brightness gradients but the following saturation gradients show a change of the RYB color 175, 140, 140 by changing the saturation by 10% instead.

 175, 140, 140

255, 255, 255

 231, 194, 193

 255, 222, 221

 255, 250, 250

 175, 140, 140

 148, 114, 115

 122, 90, 90

 97, 66, 67

 72, 44, 45

 49, 23, 24

 30, 0, 0

 0, 0, 0

 175, 140, 140

 175, 123, 123

 175, 140, 140

 175, 158, 158

 175, 105, 105

 175, 175, 175

 175, 88, 88

 175, 184, 193

 175, 70, 70

 175, 193, 210

 175, 53, 53

 175, 202, 228

 175, 35, 35

 175, 210, 245

 175, 17, 17

 175, 215, 255

 175, 0, 0

Harmonies

Analogous

The Analogous color harmony consists of three colors that are next to each other on the color wheel.



171, 140, 153



175, 140, 140



172, 148, 129

Triad

The Triadic color harmony groups three colors that are evenly spaced from another and form a triangle on the color wheel.



175, 140, 140



132, 154, 151



130, 144, 173

Complementary

The Complementary color scheme is a pair of colors which are on the opposite of each other on the color wheel.



175, 140, 140



140, 158, 175

Split Complementary

Split-complementary colors differ from the complementary color scheme. The scheme consists of three colors, the original color and two neighbors of the complement color.



118, 139, 167



175, 140, 140



122, 142, 155

Square

The Square scheme is like the rectangle color scheme, but the four colors are evenly spaced on the color wheel.



175, 140, 140



125, 150, 126



116, 136, 157



146, 146, 172

Rectangle

The Rectangle color scheme consists of four colors that form a rectangle on the color wheel.



175, 140, 140



166, 164, 125



116, 136, 157



125, 142, 172

Sweetspot

The Sweet Spot groups the original color and five complimentary colors.



175, 140, 140



227, 213, 213



175, 140, 175



115, 107, 107



242, 242, 242



115, 115, 115

Same Dimension

The Same Dimension uses a secret algorithm to generate beautiful new colors.



175, 140, 140



227, 172, 172



173, 175, 140



87, 78, 78



150, 0, 0



23, 0, 0

Inverse Universe

The Inverse Universe completely reimagines the original color for something new.



140, 158, 175



172, 200, 227



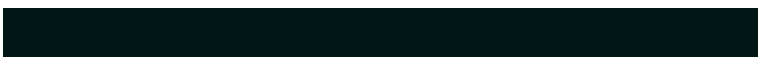
140, 152, 175



78, 83, 87



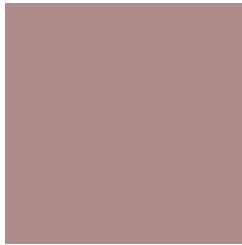
0, 75, 150



0, 12, 23

Previews

White Background



This preview shows how the RYB color 175, 140, 140 looks on a white background.

Color Contrast Check

Large Text (above 18pt) WCAG AA ✓ Pass

Any Text WCAG AA × Fail

Large Text (above 18pt) WCAG AAA × Fail

Any Text WCAG AAA × Fail

Black Background



This preview shows how the RYB color 175, 140, 140 looks on a black background.

Color Contrast Check

Large Text (above 18pt) WCAG AA ✓ Pass

Any Text WCAG AA ✓ Pass

Large Text (above 18pt) WCAG AAA ✓ Pass

Any Text WCAG AAA × Fail

If you want to check with other color combinations, try the [Color Contrast Checker](#).

RYB 175, 140, 140 Background



This preview shows how black text looks on a background with the RYB color 175, 140, 140.




This preview shows how white text looks on a background with the RYB color 175, 140, 140.

Color Blindness Simulation

Color vision deficiency is a very complex topic, and I could not describe the different causes any better than Wikipedia does, so if you want to learn more, you should check out their [article about color blindness](#).

Dichromacy





Tritanopia
176, 139, 149

Trichromacy



Original Color

175, 140, 140

Protanomaly

160, 145, 143

Deuteranomaly

169, 142, 139

Tritanomaly

176, 139, 146

Monochromacy



Original Color

175, 140, 140

Achromatopsia

150, 150, 150

Achromatomaly

159, 146, 146

CSS Examples

Text

The CSS property to change the color of the text to RYB 175, 140, 140 is called "color". The color property can be set on classes, ids or directly on the HTML element.

This example shows how text in the color `rgb(175, 140, 140)` looks like.

```
.text, #text, p{  
    color:rgb(175, 140, 140)  
}
```

If you want to add a text shadow in that color use the text-shadow property, you can generate a text shadow directly with our [CSS Text Shadow Generator](#).

Here you see how black text with a 4 pixel rgb(175, 140, 140) colored shadow looks like.

```
.shadow{ text-shadow: 4px 4px 2px rgb(175, 140, 140) }
```

Border

The CSS property to change the border of an element to RYB 175, 140, 140 is called "border". The border property can be set on classes, ids or directly on the HTML element.

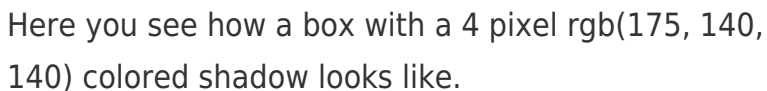
This example shows the color as border, it can be applied via the CSS property "border" or "border-color".

```
.border, #border, table{ border:4px solid rgb(175, 140, 140) }
```

If only the border color should be changed use the property `border-color`.

```
.border{ border-color:rgb(175, 140, 140) }
```

If you want to add a box shadow in that color use:



Here you see how a box with a 4 pixel `rgb(175, 140, 140)` colored shadow looks like.

```
.boxshadow{ -moz-box-shadow:4px 4px 4px 4px rgb(175, 140, 140); -webkit-box-shadow:4px 4px 4px 4px rgb(175, 140, 140); box-shadow:4px 4px 4px 4px rgb(175, 140, 140) }
```

Background

The CSS property to change the background color of an element to RYB 175, 140, 140 is called "background". The background property can be set on classes, ids or directly on the HTML element.

```
.background, #background, body{  
background: rgb(175, 140, 140) }
```

If only the background color should be changed can be used:

```
.background{ background-color: rgb(175,  
140, 140) }
```

This example shows the color as background, it is applied via the CSS property "background".

To optimize and compress your CSS code, you can use our [online CSS compressor and optimizer](#) based on csstidy. If you want to create a linear or radial gradient as background or border, check our [CSS Gradient Generator](#).

Hey! You found this booklet interesting? Support Converting Colors with the new Membership Option!

The pro membership hides all ads, plus gives you double the colors in the color bucket, and more awesome pro features!

[Learn more, Memberships starting at \\$2.50/m!](#)

**Follow me
on Twitter!**

@ConvertingColor