

Converting Colors

`RYB(175, 160, 161)`

Have a look what the booklet for
RYB(175, 160, 161) contains.

RYB(175, 160, 161)	3
<i>Conversions</i>	4
<i>Details</i>	6
<i>Harmonies</i>	11
<i>Previews</i>	23
<i>Color Blindness Simulation</i>	26
<i>CSS Examples</i>	29

Color

R_YB(175, 160, 161)

Conversions

Conversions Part 1

Format	Color
Hex	AFA0A1
RGB	175, 160, 161
RGB Percent	69%, 63%, 63%
CMY	0.3137, 0.3725, 0.3686
CMYK	0.00, 0.09, 0.08, 0.31
HSL	356°, 9%, 66%
HSV	356°, 9%, 69%
XYZ	36.6830, 36.8288, 38.8935
YIQ	164.5990, 8.6190, 3.4910

Conversions

Conversions Part 2

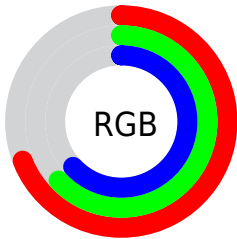
Format	Color
RYB	175, 160, 161
Decimal	11509921
CIELab	67.15, 5.64, 1.45
CIELCh	67, 5.823, 14.447
Yxy	36.8288, 0.3263, 0.3276
Android (android.graphics.Color)	4289700001 (0xFFAFA0A1)
YUV	164.5990, -1.7743, 9.1217
Hunter-Lab	60.6867, 1.6953, 4.4824

Details

The RYB color **175, 160, 161** is a light color, and the websafe version is hex **999999**. A complement of this color would be **160, 168, 175**, and the grayscale version is **165, 165, 165**.

A 20% lighter version of the original color is **231, 215, 216**, and **122, 109, 110** is the 20% darker color. If you saturate the color by 10%, you get **175, 143, 145**, and if you desaturate by 10%, it is **175, 177, 178**.

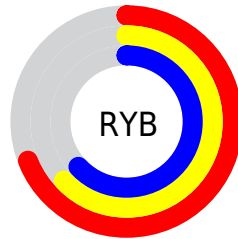
Distribution



Red (69%)

Green (63%)

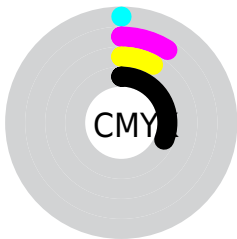
Blue (63%)



Red (69%)

Yellow (63%)

Blue (63%)

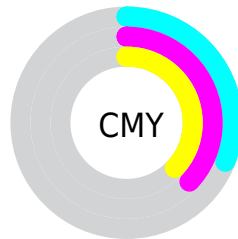


Cyan (0%)

Magenta (9%)

Yellow (8%)

Black (31%)



Cyan (31%)

Magenta (37%)

Yellow (37%)

Brightness & Saturation Gradients

These gradients show how the RYB color 175, 160, 161 changes by changing the brightness by 10 percent. The first figure shows a shift by +10% for each color and the second figure -10%.

Similar to the brightness gradients but the following saturation gradients show a change of the RYB color 175, 160, 161 by changing the saturation by 10% instead.


 175, 160, 161


255, 255, 255

 231, 215, 216

 255, 243, 244


 175, 160, 161

 148, 134, 135

 122, 109, 110

 98, 84, 85

 74, 61, 62

 51, 39, 40

 30, 19, 20

 0, 0, 0

 175, 160, 161

 175, 143, 145

 175, 160, 161

 175, 177, 178

 175, 125, 128

 175, 185, 195

 175, 108, 112

 175, 194, 212

 175, 90, 96

 175, 204, 230

 175, 73, 79

 175, 213, 248

 175, 55, 63

 175, 215, 255

 175, 38, 47

 175, 20, 30

 175, 3, 14

Harmonies

Analogous

The Analogous color harmony consists of three colors that are next to each other on the color wheel.



173, 160, 166



175, 160, 161



174, 163, 156

Triad

The Triadic color harmony groups three colors that are evenly spaced from another and form a triangle on the color wheel.



175, 160, 161



156, 165, 162



155, 161, 173

Complementary

The Complementary color scheme is a pair of colors which are on the opposite of each other on the color wheel.



175, 160, 161



160, 168, 175

Split Complementary

Split-complementary colors differ from the complementary color scheme. The scheme consists of three colors, the original color and two neighbors of the complement color.



151, 160, 171



175, 160, 161



154, 162, 166

Square

The Square scheme is like the rectangle color scheme, but the four colors are evenly spaced on the color wheel.



175, 160, 161



154, 165, 153



151, 159, 167



161, 163, 173

Rectangle

The Rectangle color scheme consists of four colors that form a rectangle on the color wheel.



175, 160, 161



172, 168, 154



151, 159, 167



154, 161, 173

Sweetspot

The Sweet Spot groups the original color and five complimentary colors.



175, 160, 161



227, 220, 221



174, 160, 175



115, 110, 110



242, 242, 242



115, 115, 115

Same Dimension

The Same Dimension uses a secret algorithm to generate beautiful new colors.



175, 160, 161



227, 204, 206



175, 173, 160



87, 78, 79



150, 0, 10



23, 0, 2

Inverse Universe

The Inverse Universe completely reimagines the original color for something new.



175, 160, 161



227, 204, 206



160, 166, 175



87, 78, 79



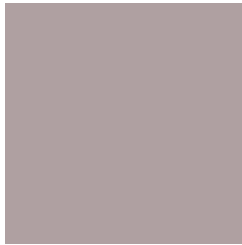
150, 0, 10



23, 0, 2

Previews

White Background



This preview shows how the RYB color 175, 160, 161 looks on a white background.

Color Contrast Check

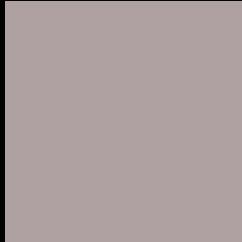
Large Text (above 18pt) WCAG AA × Fail

Any Text WCAG AA × Fail

Large Text (above 18pt) WCAG AAA × Fail

Any Text WCAG AAA × Fail

Black Background



This preview shows how the RYB color 175, 160, 161 looks on a black background.

Color Contrast Check

Large Text (above 18pt) WCAG AA ✓ Pass

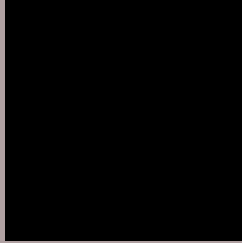
Any Text WCAG AA ✓ Pass

Large Text (above 18pt) WCAG AAA ✓ Pass

Any Text WCAG AAA ✓ Pass

If you want to check with other color combinations, try the [Color Contrast Checker](#).

RYB 175, 160, 161 Background



This preview shows how black text looks on a background with the RYB color 175, 160, 161.



This preview shows how white text looks on a background with the RYB color 175, 160, 161.

Color Blindness Simulation

Color vision deficiency is a very complex topic, and I could not describe the different causes any better than Wikipedia does, so if you want to learn more, you should check out their [article about color blindness](#).

Dichromacy



Original Color

175, 160, 161

Protanopia

166, 163, 163

Deuteranopia

180, 158, 161



Tritanopia
176, 158, 171

Trichromacy



Original Color

175, 160, 161

Protanomaly

169, 162, 162

Deuteranomaly

178, 159, 161

Tritanomaly

176, 159, 167

Monochromacy



Original Color

175, 160, 161

Achromatopsia

165, 165, 165

Achromatomaly

169, 163, 164

CSS Examples

Text

The CSS property to change the color of the text to RYB 175, 160, 161 is called "color". The color property can be set on classes, ids or directly on the HTML element.

This example shows how text in the color rgb(175, 160, 161) looks like.

```
.text, #text, p{  
    color:rgb(175, 160, 161)  
}
```

If you want to add a text shadow in that color use the text-shadow property, you can generate a text shadow directly with our [CSS Text Shadow Generator](#).

Here you see how black text with a 4 pixel rgb(175, 160, 161) colored shadow looks like.

```
.shadow{ text-shadow: 4px 4px 2px rgb(175, 160, 161) }
```

Border

The CSS property to change the border of an element to RYB 175, 160, 161 is called "border". The border property can be set on classes, ids or directly on the HTML element.

This example shows the color as border, it can be applied via the CSS property "border" or "border-color".

```
.border, #border, table{ border:4px solid rgb(175, 160, 161) }
```

If only the border color should be changed use the property `border-color`.

```
.border{ border-color:rgb(175, 160, 161) }
```

If you want to add a box shadow in that color use:

Here you see how a box with a 4 pixel `rgb(175, 160, 161)` colored shadow looks like.

```
.boxshadow{ -moz-box-shadow:4px 4px 4px  
4px rgb(175, 160, 161); -webkit-box-  
shadow:4px 4px 4px 4px rgb(175, 160, 161);  
box-shadow:4px 4px 4px 4px rgb(175, 160,  
161) }
```

Background

The CSS property to change the background color of an element to RYB 175, 160, 161 is called "background". The background property can be set on classes, ids or directly on the HTML element.

```
.background, #background, body{  
background: rgb(175, 160, 161) }
```

If only the background color should be changed can be used:

```
.background{ background-color: rgb(175,  
160, 161) }
```

This example shows the color as background, it is applied via the CSS property "background".

To optimize and compress your CSS code, you can use our [online CSS compressor and optimizer](#) based on csstidy. If you want to create a linear or radial gradient as background or border, check our [CSS Gradient Generator](#).

Hey! You found this booklet interesting? Support Converting Colors with the new Membership Option!

The pro membership hides all ads, plus gives you double the colors in the color bucket, and more awesome pro features!

[Learn more, Memberships starting at \\$2.50/m!](#)

**Follow me
on Twitter!**

@ConvertingColor