

Converting Colors

`RYB(176, 127, 134)`

Have a look what the booklet for
RYB(176, 127, 134) contains.

RYB(176, 127, 134)	3
<i>Conversions</i>	4
<i>Details</i>	6
<i>Harmonies</i>	11
<i>Previews</i>	23
<i>Color Blindness Simulation</i>	26
<i>CSS Examples</i>	29

Color

`RYB(176, 127, 134)`

Conversions

Conversions Part 1

Format	Color
Hex	B07F86
RGB	176, 127, 134
RGB Percent	69%, 50%, 53%
CMY	0.3098, 0.5020, 0.4745
CMYK	0.00, 0.28, 0.24, 0.31
HSL	351°, 24%, 59%
HSV	351°, 28%, 69%
XYZ	29.7969, 26.1301, 26.0274
YIQ	142.4490, 26.9570, 12.5650

Conversions

Conversions Part 2

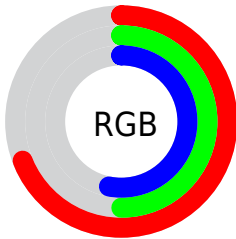
Format	Color
R_{YB}	176, 127, 134
Decimal	11566982
CIE _{Lab}	58.16, 20.01, 3.74
CIE _{LCh}	58, 20.353, 10.587
Yxy	26.1301, 0.3636, 0.3188
Android (android.graphics.Color)	4289757062 (0xFFB07F86)
YUV	142.4490, -4.1654, 29.4242
Hunter-Lab	51.1176, 14.5936, 5.5938

Details

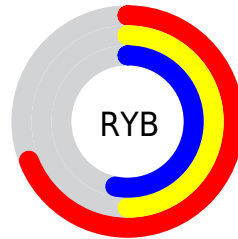
The RYB color **176, 127, 134** is a dark color, and the websafe version is hex **CC9999**. A complement of this color would be **127, 153, 176**, and the grayscale version is **142, 142, 142**.

A 20% lighter version of the original color is **232, 180, 187**, and **122, 77, 85** is the 20% darker color. If you saturate the color by 10%, you get **176, 109, 119**, and if you desaturate by 10%, it is **176, 145, 149**.

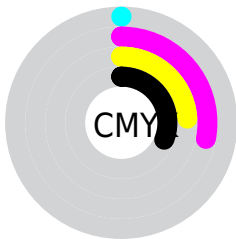
Distribution



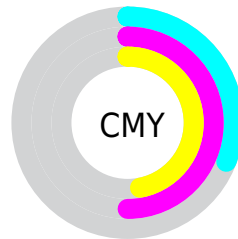
- Red (69%)
- Green (50%)
- Blue (53%)



- Red (69%)
- Yellow (50%)
- Blue (53%)



- Cyan (0%)
- Magenta (28%)
- Yellow (24%)
- Black (31%)



- Cyan (31%)
- Magenta (50%)
- Yellow (47%)

Brightness & Saturation Gradients

These gradients show how the RYB color 176, 127, 134 changes by changing the brightness by 10 percent. The first figure shows a shift by +10% for each color and the second figure -10%.

Similar to the brightness gradients but the following saturation gradients show a change of the RYB color 176, 127, 134 by changing the saturation by 10% instead.

 176, 127, 134

255, 255, 255

 232, 180, 187

 255, 208, 215

 255, 236, 243

 176, 127, 134

 149, 102, 109

 122, 77, 85

 97, 54, 61

 72, 32, 40

 48, 10, 19

 25, 0, 1


 0, 0, 0

 176, 127, 134

 176, 109, 119


 176, 127, 134

 176, 145, 149

 176, 92, 104

 176, 162, 164

 176, 74, 89

 176, 178, 180

 176, 57, 74

 176, 187, 197

 176, 39, 59

 176, 197, 215

 176, 21, 43

 176, 207, 233

 176, 4, 28

 176, 216, 250

 176, 0, 25

 176, 216, 255

Harmonies

Analogous

The Analogous color harmony consists of three colors that are next to each other on the color wheel.



168, 128, 152



176, 127, 134



174, 134, 117

Triad

The Triadic color harmony groups three colors that are evenly spaced from another and form a triangle on the color wheel.



176, 127, 134



112, 146, 131



104, 130, 173

Complementary

The Complementary color scheme is a pair of colors which are on the opposite of each other on the color wheel.



176, 127, 134



127, 153, 176

Split Complementary

Split-complementary colors differ from the complementary color scheme. The scheme consists of three colors, the original color and two neighbors of the complement color.



90, 122, 162



176, 127, 134



107, 135, 149

Square

The Square scheme is like the rectangle color scheme, but the four colors are evenly spaced on the color wheel.



176, 127, 134



112, 147, 105



92, 122, 150



127, 137, 175

Rectangle

The Rectangle color scheme consists of four colors that form a rectangle on the color wheel.



176, 127, 134



168, 149, 109



92, 122, 150



97, 126, 170

Sweetspot

The Sweet Spot groups the original color and five complimentary colors.



176, 127, 134



230, 211, 214



169, 127, 176



115, 103, 105



242, 242, 242



115, 115, 115

Same Dimension

The Same Dimension uses a secret algorithm to generate beautiful new colors.



176, 127, 134



230, 154, 165



176, 153, 127



89, 80, 82



153, 0, 22



26, 0, 4

Inverse Universe

The Inverse Universe completely reimagines the original color for something new.



176, 127, 134



230, 154, 165



127, 146, 176



89, 80, 82



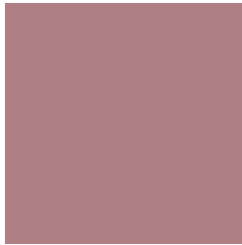
153, 0, 22



26, 0, 4

Previews

White Background



This preview shows how the RYB color 176, 127, 134 looks on a white background.

Color Contrast Check

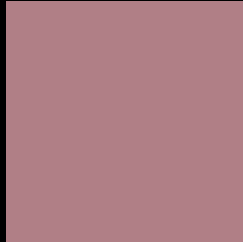
Large Text (above 18pt) WCAG AA ✓ Pass

Any Text WCAG AA ✗ Fail

Large Text (above 18pt) WCAG AAA ✗ Fail

Any Text WCAG AAA ✗ Fail

Black Background



This preview shows how the RYB color 176, 127, 134 looks on a black background.

Color Contrast Check

Large Text (above 18pt) WCAG AA ✓ Pass

Any Text WCAG AA ✓ Pass

Large Text (above 18pt) WCAG AAA ✓ Pass

Any Text WCAG AAA × Fail

If you want to check with other color combinations, try the [Color Contrast Checker](#).

R Y B 176, 127, 134 Background



This preview shows how black text looks on a background with the R Y B color 176, 127, 134.

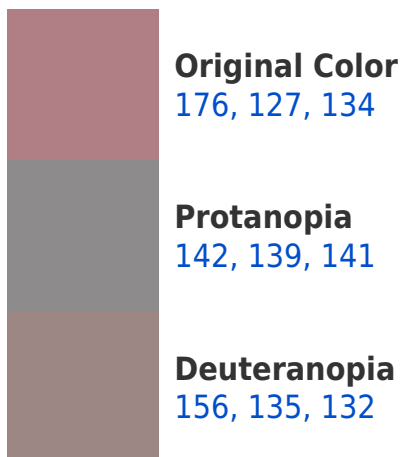


This preview shows how white text looks on a background with the R Y B color 176, 127, 134.

Color Blindness Simulation

Color vision deficiency is a very complex topic, and I could not describe the different causes any better than Wikipedia does, so if you want to learn more, you should check out their [article about color blindness](#).

Dichromacy





Tritanopia
176, 127, 136

Trichromacy



Original Color
176, 127, 134

Protanomaly
154, 135, 138

Deuteranomaly
163, 132, 133

Tritanomaly
176, 127, 135

Monochromacy



Original Color
176, 127, 134

Achromatopsia
142, 142, 142

Achromatomaly
154, 137, 139

CSS Examples

Text

The CSS property to change the color of the text to RYB 176, 127, 134 is called "color". The color property can be set on classes, ids or directly on the HTML element.

This example shows how text in the color rgb(176, 127, 134) looks like.

```
.text, #text, p{  
    color:rgb(176, 127, 134)  
}
```

If you want to add a text shadow in that color use the text-shadow property, you can generate a text shadow directly with our [CSS Text Shadow Generator](#).

Here you see how black text with a 4 pixel rgb(176, 127, 134) colored shadow looks like.

```
.shadow{ text-shadow: 4px 4px 2px rgb(176, 127, 134) }
```

Border

The CSS property to change the border of an element to RYB 176, 127, 134 is called "border". The border property can be set on classes, ids or directly on the HTML element.

This example shows the color as border, it can be applied via the CSS property "border" or "border-color".

```
.border, #border, table{ border:4px solid rgb(176, 127, 134) }
```

If only the border color should be changed use the property `border-color`.

```
.border{ border-color:rgb(176, 127, 134) }
```

If you want to add a box shadow in that color use:

Here you see how a box with a 4 pixel `rgb(176, 127, 134)` colored shadow looks like.

```
.boxshadow{ -moz-box-shadow:4px 4px 4px  
4px rgb(176, 127, 134); -webkit-box-  
shadow:4px 4px 4px 4px rgb(176, 127, 134);  
box-shadow:4px 4px 4px 4px rgb(176, 127,  
134) }
```

Background

The CSS property to change the background color of an element to RYB 176, 127, 134 is called "background". The background property can be set on classes, ids or directly on the HTML element.

```
.background, #background, body{  
background: rgb(176, 127, 134) }
```

If only the background color should be changed can be used:

```
.background{ background-color: rgb(176,  
127, 134) }
```

This example shows the color as background, it is applied via the CSS property "background".

To optimize and compress your CSS code, you can use our [online CSS compressor and optimizer](#) based on csstidy. If you want to create a linear or radial gradient as background or border, check our [CSS Gradient Generator](#).

Hey! You found this booklet interesting? Support Converting Colors with the new Membership Option!

The pro membership hides all ads, plus gives you double the colors in the color bucket, and more awesome pro features!

[Learn more, Memberships starting at \\$2.50/m!](#)

**Follow me
on Twitter!**

@ConvertingColor