

Converting Colors

`RYB(176, 128, 128)`

Have a look what the booklet for
RYB(176, 128, 128) contains.

RYB(176, 128, 128)	3
<i>Conversions</i>	4
<i>Details</i>	6
<i>Harmonies</i>	11
<i>Previews</i>	23
<i>Color Blindness Simulation</i>	26
<i>CSS Examples</i>	29

Color

R_YB(176, 128, 128)

Conversions

Conversions Part 1

Format	Color
Hex	B08080
RGB	176, 128, 128
RGB Percent	69%, 50%, 50%
CMY	0.3098, 0.4980, 0.4980
CMYK	0.00, 0.27, 0.27, 0.31
HSL	0°, 23%, 60%
HSV	0°, 27%, 69%
XYZ	29.5199, 26.2270, 23.9285
YIQ	142.3520, 28.6080, 10.1760

Conversions

Conversions Part 2

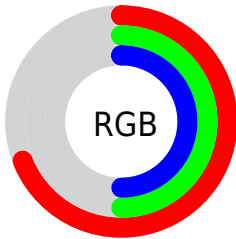
Format	Color
RYB	176, 128, 128
Decimal	11567232
CIELab	58.25, 18.56, 7.33
CIELCh	58, 19.950, 21.549
Yxy	26.2270, 0.3705, 0.3292
Android (android.graphics.Color)	4289757312 (0xFFB08080)
YUV	142.3520, -7.0755, 29.5093
Hunter-Lab	51.2123, 13.2701, 8.1458

Details

The RYB color **176, 128, 128** is a light color, and the websafe version is hex **CC9999**. A complement of this color would be **128, 152, 176**, and the grayscale version is **142, 142, 142**.

A 20% lighter version of the original color is **233, 181, 181**, and **122, 78, 79** is the 20% darker color. If you saturate the color by 10%, you get **176, 110, 110**, and if you desaturate by 10%, it is **176, 146, 146**.

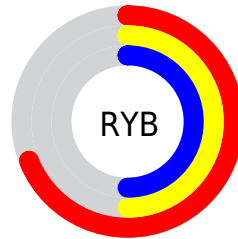
Distribution



Red (69%)

Green (50%)

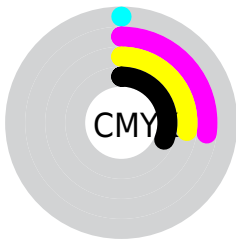
Blue (50%)



Red (69%)

Yellow (50%)

Blue (50%)

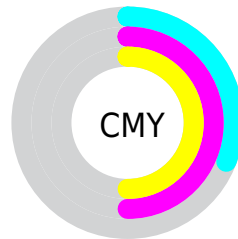


Cyan (0%)

Magenta (27%)

Yellow (27%)

Black (31%)



Cyan (31%)

Magenta (50%)

Yellow (50%)

Brightness & Saturation Gradients

These gradients show how the RYB color 176, 128, 128 changes by changing the brightness by 10 percent. The first figure shows a shift by +10% for each color and the second figure -10%.

Similar to the brightness gradients but the following saturation gradients show a change of the RYB color 176, 128, 128 by changing the saturation by 10% instead.


 176, 128, 128

255, 255, 255

 233, 181, 181

 255, 209, 208

 255, 237, 237


 176, 128, 128

 149, 103, 103

 122, 78, 79

 97, 55, 56

 72, 33, 35

 48, 12, 13


 23, 0, 0

 0, 0, 0

 176, 128, 128

 176, 110, 110


 176, 128, 128

 176, 146, 146

 176, 93, 93

 176, 163, 163

 176, 75, 75

 176, 179, 181

 176, 58, 58

 176, 187, 198

 176, 40, 40

 176, 196, 216

 176, 22, 22

 176, 205, 234

 176, 5, 5

 176, 214, 251

 176, 0, 0

 176, 216, 255

Harmonies

Analogous

The Analogous color harmony consists of three colors that are next to each other on the color wheel.



172, 128, 146



176, 128, 128



171, 141, 113

Triad

The Triadic color harmony groups three colors that are evenly spaced from another and form a triangle on the color wheel.



176, 128, 128



118, 147, 145



113, 133, 174

Complementary

The Complementary color scheme is a pair of colors which are on the opposite of each other on the color wheel.



176, 128, 128



128, 152, 176

Split Complementary

Split-complementary colors differ from the complementary color scheme. The scheme consists of three colors, the original color and two neighbors of the complement color.



94, 125, 167



176, 128, 128



101, 130, 150

Square

The Square scheme is like the rectangle color scheme, but the four colors are evenly spaced on the color wheel.



176, 128, 128



107, 143, 110



91, 121, 152



136, 137, 172

Rectangle

The Rectangle color scheme consists of four colors that form a rectangle on the color wheel.



176, 128, 128



163, 163, 107



91, 121, 152



105, 130, 173

Sweetspot

The Sweet Spot groups the original color and five complimentary colors.



176, 128, 128



230, 211, 211



176, 128, 176



115, 103, 103



242, 242, 242



115, 115, 115

Same Dimension

The Same Dimension uses a secret algorithm to generate beautiful new colors.



176, 128, 128



230, 154, 154



176, 176, 128



89, 80, 80



153, 0, 0



26, 0, 0

Inverse Universe

The Inverse Universe completely reimagines the original color for something new.



128, 152, 176



154, 192, 230



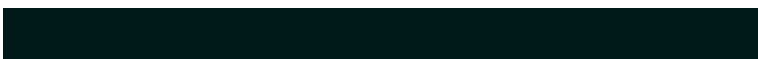
128, 144, 176



80, 85, 89



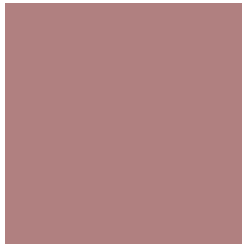
0, 77, 153



0, 13, 26

Previews

White Background



This preview shows how the RYB color 176, 128, 128 looks on a white background.

Color Contrast Check

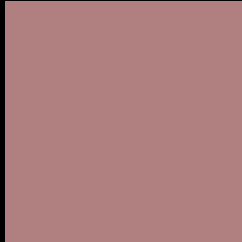
Large Text (above 18pt) WCAG AA ✓ Pass

Any Text WCAG AA × Fail

Large Text (above 18pt) WCAG AAA × Fail

Any Text WCAG AAA × Fail

Black Background



This preview shows how the RYB color 176, 128, 128 looks on a black background.

Color Contrast Check

Large Text (above 18pt) WCAG AA ✓ Pass

Any Text WCAG AA ✓ Pass

Large Text (above 18pt) WCAG AAA ✓ Pass

Any Text WCAG AAA × Fail

If you want to check with other color combinations, try the [Color Contrast Checker](#).

RYB 176, 128, 128 Background



This preview shows how black text looks on a background with the RYB color 176, 128, 128.



This preview shows how white text looks on a background with the RYB color 176, 128, 128.

Color Blindness Simulation

Color vision deficiency is a very complex topic, and I could not describe the different causes any better than Wikipedia does, so if you want to learn more, you should check out their [article about color blindness](#).

Dichromacy



Original Color
176, 128, 128

Protanopia
141, 144, 134

Deuteranopia
159, 138, 127



Tritanopia
177, 127, 136

Trichromacy



Original Color
176, 128, 128

Protanomaly
156, 137, 132

Deuteranomaly
165, 133, 127

Tritanomaly
177, 127, 133

Monochromacy



Original Color
176, 128, 128

Achromatopsia
142, 142, 142

Achromatomaly
154, 137, 137

CSS Examples

Text

The CSS property to change the color of the text to RYB 176, 128, 128 is called "color". The color property can be set on classes, ids or directly on the HTML element.

This example shows how text in the color `rgb(176, 128, 128)` looks like.

```
.text, #text, p{  
    color:rgb(176, 128, 128)  
}
```

If you want to add a text shadow in that color use the text-shadow property, you can generate a text shadow directly with our [CSS Text Shadow Generator](#).

Here you see how black text with a 4 pixel rgb(176, 128, 128) colored shadow looks like.

```
.shadow{ text-shadow: 4px 4px 2px rgb(176, 128, 128) }
```

Border

The CSS property to change the border of an element to RYB 176, 128, 128 is called "border". The border property can be set on classes, ids or directly on the HTML element.

This example shows the color as border, it can be applied via the CSS property "border" or "border-color".

```
.border, #border, table{ border:4px solid rgb(176, 128, 128) }
```

If only the border color should be changed use the property `border-color`.

```
.border{ border-color:rgb(176, 128, 128) }
```

If you want to add a box shadow in that color use:

Here you see how a box with a 4 pixel `rgb(176, 128, 128)` colored shadow looks like.

```
.boxshadow{ -moz-box-shadow:4px 4px 4px 4px rgb(176, 128, 128); -webkit-box-shadow:4px 4px 4px 4px rgb(176, 128, 128); box-shadow:4px 4px 4px 4px rgb(176, 128, 128) }
```

Background

The CSS property to change the background color of an element to RGB 176, 128, 128 is called "background". The background property can be set on classes, ids or directly on the HTML element.

```
.background, #background, body{  
background: rgb(176, 128, 128) }
```

If only the background color should be changed can be used:

```
.background{ background-color: rgb(176,  
128, 128) }
```

This example shows the color as background, it is applied via the CSS property "background".

To optimize and compress your CSS code, you can use our [online CSS compressor and optimizer](#) based on csstidy. If you want to create a linear or radial gradient as background or border, check our [CSS Gradient Generator](#).

Hey! You found this booklet interesting? Support Converting Colors with the new Membership Option!

The pro membership hides all ads, plus gives you double the colors in the color bucket, and more awesome pro features!

[Learn more, Memberships starting at \\$2.50/m!](#)

**Follow me
on Twitter!**

@ConvertingColor