

Converting Colors

`RYB(176, 135, 138)`

Have a look what the booklet for
RYB(176, 135, 138) contains.

RYB(176, 135, 138)	3
<i>Conversions</i>	4
<i>Details</i>	6
<i>Harmonies</i>	11
<i>Previews</i>	23
<i>Color Blindness Simulation</i>	26
<i>CSS Examples</i>	29

Color

R_YB(176, 135, 138)

Conversions

Conversions Part 1

Format	Color
Hex	B0878A
RGB	176, 135, 138
RGB Percent	69%, 53%, 54%
CMY	0.3098, 0.4706, 0.4588
CMYK	0.00, 0.23, 0.22, 0.31
HSL	356°, 21%, 61%
HSV	356°, 23%, 69%
XYZ	31.1559, 28.3930, 27.8831
YIQ	147.6010, 23.4730, 9.6250

Conversions

Conversions Part 2

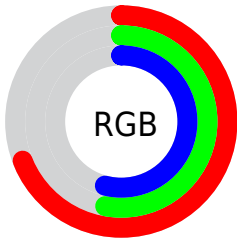
Format	Color
RYB	176, 135, 138
Decimal	11569034
CIELab	60.24, 16.12, 4.45
CIELCh	60, 16.722, 15.420
Yxy	28.3930, 0.3563, 0.3247
Android (android.graphics.Color)	4289759114 (0xFFB0878A)
YUV	147.6010, -4.7333, 24.9059
Hunter-Lab	53.2851, 11.1204, 6.2743

Details

The RYB color **176, 135, 138** is a light color, and the websafe version is hex **CC9999**. A complement of this color would be **135, 156, 176**, and the grayscale version is **148, 148, 148**.

A 20% lighter version of the original color is **232, 188, 191**, and **123, 85, 88** is the 20% darker color. If you saturate the color by 10%, you get **176, 117, 122**, and if you desaturate by 10%, it is **176, 153, 154**.

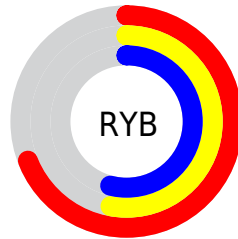
Distribution



Red (69%)

Green (53%)

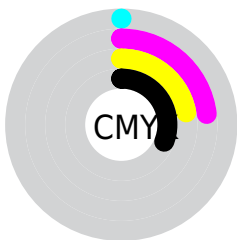
Blue (54%)



Red (69%)

Yellow (53%)

Blue (54%)

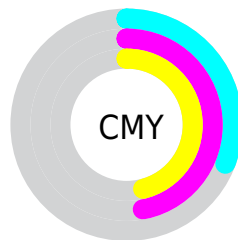


Cyan (0%)

Magenta (23%)

Yellow (22%)

Black (31%)



Cyan (31%)

Magenta (47%)

Yellow (46%)

Brightness & Saturation Gradients

These gradients show how the RYB color 176, 135, 138 changes by changing the brightness by 10 percent. The first figure shows a shift by +10% for each color and the second figure -10%.

Similar to the brightness gradients but the following saturation gradients show a change of the RYB color 176, 135, 138 by changing the saturation by 10% instead.


 176, 135, 138

255, 255, 255

 232, 188, 191

 255, 216, 219

 255, 245, 248

 176, 135, 138

 149, 110, 113

 123, 85, 88

 97, 62, 65

 73, 39, 43


 49, 18, 23

 30, 0, 1

 0, 0, 0

 176, 135, 138

 176, 117, 122


 176, 135, 138

 176, 153, 154

 176, 100, 105

 176, 170, 171

 176, 82, 89

 176, 182, 188

 176, 65, 73

 176, 191, 205

 176, 47, 56

 176, 200, 223

 176, 29, 40

 176, 210, 241

 176, 12, 24

 176, 216, 255

 176, 0, 13

 176, 216, 255

Harmonies

Analogous

The Analogous color harmony consists of three colors that are next to each other on the color wheel.



170, 136, 153



176, 135, 138



173, 141, 125

Triad

The Triadic color harmony groups three colors that are evenly spaced from another and form a triangle on the color wheel.



176, 135, 138



124, 151, 143



120, 139, 173

Complementary

The Complementary color scheme is a pair of colors which are on the opposite of each other on the color wheel.



176, 135, 138



135, 156, 176

Split Complementary

Split-complementary colors differ from the complementary color scheme. The scheme consists of three colors, the original color and two neighbors of the complement color.



107, 133, 166



176, 135, 138



116, 140, 153

Square

The Square scheme is like the rectangle color scheme, but the four colors are evenly spaced on the color wheel.



176, 135, 138



119, 149, 117



106, 131, 154



138, 143, 173

Rectangle

The Rectangle color scheme consists of four colors that form a rectangle on the color wheel.



176, 135, 138



167, 156, 119



106, 131, 154



114, 136, 172

Sweetspot

The Sweet Spot groups the original color and five complimentary colors.



176, 135, 138



230, 213, 215



173, 135, 176



115, 106, 106



242, 242, 242



115, 115, 115

Same Dimension

The Same Dimension uses a secret algorithm to generate beautiful new colors.



176, 135, 138



230, 165, 170



176, 164, 135



89, 80, 81



153, 0, 11



26, 0, 2

Inverse Universe

The Inverse Universe completely reimagines the original color for something new.



176, 135, 138



230, 165, 170



135, 150, 176



89, 80, 81



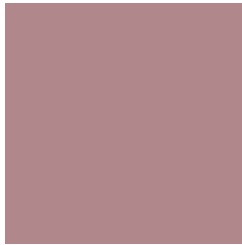
153, 0, 11



26, 0, 2

Previews

White Background



This preview shows how the RYB color 176, 135, 138 looks on a white background.

Color Contrast Check

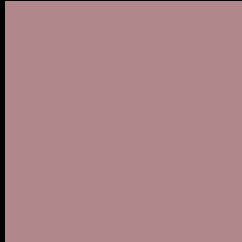
Large Text (above 18pt) WCAG AA ✓ Pass

Any Text WCAG AA × Fail

Large Text (above 18pt) WCAG AAA × Fail

Any Text WCAG AAA × Fail

Black Background



This preview shows how the RYB color 176, 135, 138 looks on a black background.

Color Contrast Check

Large Text (above 18pt) WCAG AA ✓ Pass

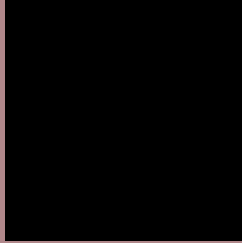
Any Text WCAG AA ✓ Pass

Large Text (above 18pt) WCAG AAA ✓ Pass

Any Text WCAG AAA × Fail

If you want to check with other color combinations, try the [Color Contrast Checker](#).

RYB 176, 135, 138 Background



This preview shows how black text looks on a background with the RYB color 176, 135, 138.



This preview shows how white text looks on a background with the RYB color 176, 135, 138.

Color Blindness Simulation

Color vision deficiency is a very complex topic, and I could not describe the different causes any better than Wikipedia does, so if you want to learn more, you should check out their [article about color blindness](#).


Dichromacy



Original Color
176, 135, 138

Protanopia
148, 146, 143

Deuteranopia
163, 140, 137



Tritanopia
177, 134, 144

Trichromacy



Original Color

176, 135, 138

Protanomaly

158, 141, 141

Deuteranomaly

168, 138, 137

Tritanomaly

177, 134, 142

Monochromacy



Original Color

176, 135, 138

Achromatopsia

148, 148, 148

Achromatomaly

158, 143, 144

CSS Examples

Text

The CSS property to change the color of the text to RYB 176, 135, 138 is called "color". The color property can be set on classes, ids or directly on the HTML element.

This example shows how text in the color rgb(176, 135, 138) looks like.

```
.text, #text, p{  
    color:rgb(176, 135, 138)  
}
```

If you want to add a text shadow in that color use the text-shadow property, you can generate a text shadow directly with our [CSS Text Shadow Generator](#).

Here you see how black text with a 4 pixel rgb(176, 135, 138) colored shadow looks like.

```
.shadow{ text-shadow: 4px 4px 2px rgb(176, 135, 138) }
```

Border

The CSS property to change the border of an element to RYB 176, 135, 138 is called "border". The border property can be set on classes, ids or directly on the HTML element.

This example shows the color as border, it can be applied via the CSS property "border" or "border-color".

```
.border, #border, table{ border:4px solid rgb(176, 135, 138) }
```

If only the border color should be changed use the property `border-color`.

```
.border{ border-color:rgb(176, 135, 138) }
```

If you want to add a box shadow in that color use:

Here you see how a box with a 4 pixel `rgb(176, 135, 138)` colored shadow looks like.

```
.boxshadow{ -moz-box-shadow:4px 4px 4px  
4px rgb(176, 135, 138); -webkit-box-  
shadow:4px 4px 4px 4px rgb(176, 135, 138);  
box-shadow:4px 4px 4px 4px rgb(176, 135,  
138) }
```

Background

The CSS property to change the background color of an element to RYB 176, 135, 138 is called "background". The background property can be set on classes, ids or directly on the HTML element.

```
.background, #background, body{  
background: rgb(176, 135, 138) }
```

If only the background color should be changed can be used:

```
.background{ background-color: rgb(176,  
135, 138) }
```

This example shows the color as background, it is applied via the CSS property "background".

To optimize and compress your CSS code, you can use our [online CSS compressor and optimizer](#) based on csstidy. If you want to create a linear or radial gradient as background or border, check our [CSS Gradient Generator](#).

Hey! You found this booklet interesting? Support Converting Colors with the new Membership Option!

The pro membership hides all ads, plus gives you double the colors in the color bucket, and more awesome pro features!

[Learn more, Memberships starting at \\$2.50/m!](#)

**Follow me
on Twitter!**

@ConvertingColor