

Converting Colors

`RYB(177, 132, 144)`

Have a look what the booklet for
RYB(177, 132, 144) contains.

RYB(177, 132, 144)	3
<i>Conversions</i>	4
<i>Details</i>	6
<i>Harmonies</i>	11
<i>Previews</i>	23
<i>Color Blindness Simulation</i>	26
<i>CSS Examples</i>	29

Color

R_YB(177, 132, 144)

Conversions

Conversions Part 1

Format	Color
Hex	B18490
RGB	177, 132, 144
RGB Percent	69%, 52%, 56%
CMY	0.3059, 0.4824, 0.4353
CMYK	0.00, 0.25, 0.19, 0.31
HSL	344°, 22%, 61%
HSV	344°, 25%, 69%
XYZ	31.4168, 27.8633, 30.1079
YIQ	146.8230, 22.9680, 13.2720

Conversions

Conversions Part 2

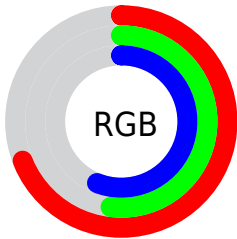
Format	Color
RYB	177, 132, 144
Decimal	11633808
CIELab	59.76, 19.14, 0.33
CIELCh	60, 19.139, 0.993
Yxy	27.8633, 0.3515, 0.3117
Android (android.graphics.Color)	4289823888 (0xFFB18490)
YUV	146.8230, -1.3917, 26.4652
Hunter-Lab	52.7857, 13.8641, 3.1322

Details

The RYB color **177, 132, 144** is a light color, and the websafe version is hex **CC9999**. A complement of this color would be **132, 158, 177**, and the grayscale version is **147, 147, 147**.

A 20% lighter version of the original color is **233, 185, 198**, and **124, 82, 94** is the 20% darker color. If you saturate the color by 10%, you get **177, 114, 131**, and if you desaturate by 10%, it is **177, 150, 157**.

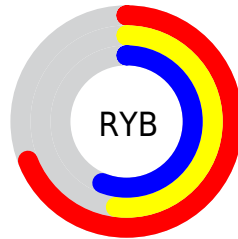
Distribution



Red (69%)

Green (52%)

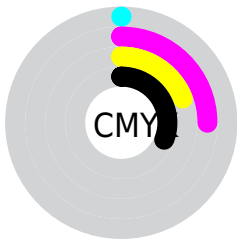
Blue (56%)



Red (69%)

Yellow (52%)

Blue (56%)

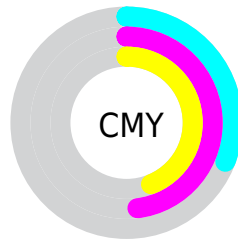


Cyan (0%)

Magenta (25%)

Yellow (19%)

Black (31%)



Cyan (31%)

Magenta (48%)

Yellow (44%)

Brightness & Saturation Gradients

These gradients show how the RYB color 177, 132, 144 changes by changing the brightness by 10 percent. The first figure shows a shift by +10% for each color and the second figure -10%.

Similar to the brightness gradients but the following saturation gradients show a change of the RYB color 177, 132, 144 by changing the saturation by 10% instead.

 177, 132, 144


255, 255, 255

 233, 185, 198

 255, 213, 226


 255, 242, 254

 177, 132, 144

 150, 107, 118

 124, 82, 94

 98, 59, 70

 73, 36, 48

 50, 15, 27

 32, 0, 1

 0, 0, 0

 177, 132, 144

 177, 114, 131


 177, 132, 144

 177, 150, 157

 177, 97, 118

 177, 167, 170

 177, 79, 105

 177, 182, 185

 177, 61, 92

 177, 192, 203

 177, 44, 79

 177, 202, 221

 177, 26, 66

 177, 212, 238

 177, 8, 53

 177, 222, 255

 177, 0, 47

 177, 218, 255

 177, 216, 255

Harmonies

Analogous

The Analogous color harmony consists of three colors that are next to each other on the color wheel.



166, 134, 161



177, 132, 144



178, 134, 127

Triad

The Triadic color harmony groups three colors that are evenly spaced from another and form a triangle on the color wheel.



177, 132, 144



115, 148, 125



105, 132, 173

Complementary

The Complementary color scheme is a pair of colors which are on the opposite of each other on the color wheel.



177, 132, 144



132, 158, 177

Split Complementary

Split-complementary colors differ from the complementary color scheme. The scheme consists of three colors, the original color and two neighbors of the complement color.



97, 127, 161



177, 132, 144



119, 146, 152

Square

The Square scheme is like the rectangle color scheme, but the four colors are evenly spaced on the color wheel.



177, 132, 144



128, 156, 110



103, 131, 154



125, 139, 177

Rectangle

The Rectangle color scheme consists of four colors that form a rectangle on the color wheel.



177, 132, 144



174, 145, 118



103, 131, 154



101, 130, 170

Sweetspot

The Sweet Spot groups the original color and five complimentary colors.



177, 132, 144



230, 211, 216



165, 132, 177



115, 103, 106



242, 242, 242



115, 115, 115

Same Dimension

The Same Dimension uses a secret algorithm to generate beautiful new colors.



177, 132, 144



230, 158, 177



177, 147, 132



89, 80, 83



153, 0, 41



26, 0, 7

Inverse Universe

The Inverse Universe completely reimagines the original color for something new.



177, 132, 144



230, 158, 177



132, 152, 177



89, 80, 83



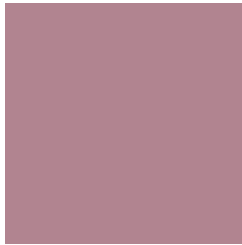
153, 0, 41



26, 0, 7

Previews

White Background



This preview shows how the RYB color 177, 132, 144 looks on a white background.

Color Contrast Check

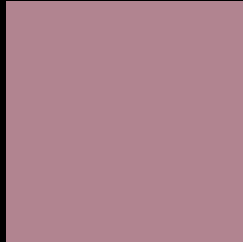
Large Text (above 18pt) WCAG AA ✓ Pass

Any Text WCAG AA ✗ Fail

Large Text (above 18pt) WCAG AAA ✗ Fail

Any Text WCAG AAA ✗ Fail

Black Background



This preview shows how the RYB color 177, 132, 144 looks on a black background.

Color Contrast Check

Large Text (above 18pt) WCAG AA ✓ Pass

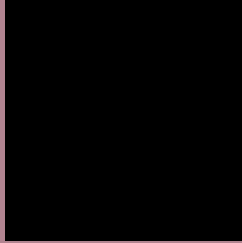
Any Text WCAG AA ✓ Pass

Large Text (above 18pt) WCAG AAA ✓ Pass

Any Text WCAG AAA × Fail

If you want to check with other color combinations, try the [Color Contrast Checker](#).

RYB 177, 132, 144 Background



This preview shows how black text looks on a background with the RYB color 177, 132, 144.



This preview shows how white text looks on a background with the RYB color 177, 132, 144.

Color Blindness Simulation

Color vision deficiency is a very complex topic, and I could not describe the different causes any better than Wikipedia does, so if you want to learn more, you should check out their [article about color blindness](#).

Dichromacy



Original Color

177, 132, 144

Protanopia

145, 143, 151

Deuteranopia

159, 140, 143



Tritanopia
177, 132, 142

Trichromacy



Original Color
177, 132, 144

Protanomaly
157, 139, 148

Deuteranomaly
166, 137, 143

Tritanomaly
177, 132, 143

Monochromacy



Original Color
177, 132, 144

Achromatopsia
147, 147, 147

Achromatomaly
158, 142, 146

CSS Examples

Text

The CSS property to change the color of the text to RYB 177, 132, 144 is called "color". The color property can be set on classes, ids or directly on the HTML element.

This example shows how text in the color `rgb(177, 132, 144)` looks like.

```
.text, #text, p{  
    color:rgb(177, 132, 144)  
}
```

If you want to add a text shadow in that color use the text-shadow property, you can generate a text shadow directly with our [CSS Text Shadow Generator](#).

Here you see how black text with a 4 pixel rgb(177, 132, 144) colored shadow looks like.

```
.shadow{ text-shadow: 4px 4px 2px rgb(177, 132, 144) }
```

Border

The CSS property to change the border of an element to RYB 177, 132, 144 is called "border". The border property can be set on classes, ids or directly on the HTML element.

This example shows the color as border, it can be applied via the CSS property "border" or "border-color".

```
.border, #border, table{ border:4px solid rgb(177, 132, 144) }
```

If only the border color should be changed use the property `border-color`.

```
.border{ border-color:rgb(177, 132, 144) }
```

If you want to add a box shadow in that color use:

Here you see how a box with a 4 pixel `rgb(177, 132, 144)` colored shadow looks like.

```
.boxshadow{ -moz-box-shadow:4px 4px 4px  
4px rgb(177, 132, 144); -webkit-box-  
shadow:4px 4px 4px 4px rgb(177, 132, 144);  
box-shadow:4px 4px 4px 4px rgb(177, 132,  
144) }
```

Background

The CSS property to change the background color of an element to RYB 177, 132, 144 is called "background". The background property can be set on classes, ids or directly on the HTML element.

```
.background, #background, body{  
background: rgb(177, 132, 144) }
```

If only the background color should be changed can be used:

```
.background{ background-color: rgb(177,  
132, 144) }
```

This example shows the color as background, it is applied via the CSS property "background".

To optimize and compress your CSS code, you can use our [online CSS compressor and optimizer](#) based on csstidy. If you want to create a linear or radial gradient as background or border, check our [CSS Gradient Generator](#).

Hey! You found this booklet interesting? Support Converting Colors with the new Membership Option!

The pro membership hides all ads, plus gives you double the colors in the color bucket, and more awesome pro features!

[Learn more, Memberships starting at \\$2.50/m!](#)

**Follow me
on Twitter!**

@ConvertingColor