

Converting Colors

`RYB(177, 139, 146)`

Have a look what the booklet for
RYB(177, 139, 146) contains.

RYB(177, 139, 146)	3
<i>Conversions</i>	4
<i>Details</i>	6
<i>Harmonies</i>	11
<i>Previews</i>	23
<i>Color Blindness Simulation</i>	26
<i>CSS Examples</i>	29

Color

R_YB(177, 139, 146)

Conversions

Conversions Part 1

Format	Color
Hex	B18B92
RGB	177, 139, 146
RGB Percent	69%, 55%, 57%
CMY	0.3059, 0.4549, 0.4275
CMYK	0.00, 0.21, 0.18, 0.31
HSL	349°, 20%, 62%
HSV	349°, 21%, 69%
XYZ	32.5524, 29.8877, 31.2473
YIQ	151.1600, 20.4010, 10.2330

Conversions

Conversions Part 2

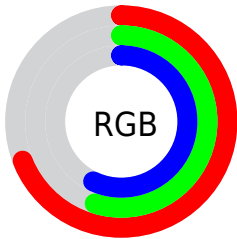
Format	Color
RYB	177, 139, 146
Decimal	11635602
CIELab	61.56, 15.53, 1.80
CIELCh	62, 15.631, 6.606
Yxy	29.8877, 0.3475, 0.3190
Android (android.graphics.Color)	4289825682 (0xFFB18B92)
YUV	151.1600, -2.5439, 22.6617
Hunter-Lab	54.6696, 10.6139, 4.3805

Details

The RYB color **177, 139, 146** is a light color, and the websafe version is hex **CC9999**. A complement of this color would be **139, 160, 177**, and the grayscale version is **151, 151, 151**.

A 20% lighter version of the original color is **233, 193, 200**, and **124, 89, 96** is the 20% darker color. If you saturate the color by 10%, you get **177, 121, 132**, and if you desaturate by 10%, it is **177, 157, 160**.

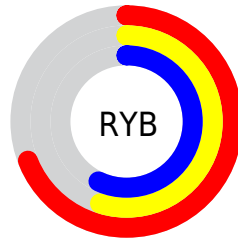
Distribution



Red (69%)

Green (55%)

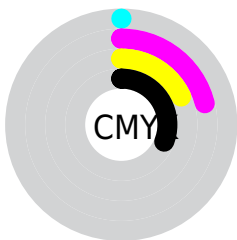
Blue (57%)



Red (69%)

Yellow (55%)

Blue (57%)

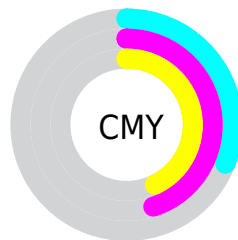


Cyan (0%)

Magenta (21%)

Yellow (18%)

Black (31%)



Cyan (31%)

Magenta (45%)

Yellow (43%)

Brightness & Saturation Gradients

These gradients show how the RYB color 177, 139, 146 changes by changing the brightness by 10 percent. The first figure shows a shift by +10% for each color and the second figure -10%.

Similar to the brightness gradients but the following saturation gradients show a change of the RYB color 177, 139, 146 by changing the saturation by 10% instead.

 177, 139, 146

255, 255, 255

 233, 193, 200


 255, 221, 228

 255, 249, 255


 177, 139, 146

 150, 113, 120

 124, 89, 96

 98, 65, 72

 74, 43, 50

 51, 22, 29

 32, 0, 2

 0, 0, 0

 177, 139, 146

 177, 121, 132

 177, 139, 146

 177, 157, 160

■ 177, 104, 117

■ 177, 174, 175

■ 177, 86, 103

■ 177, 185, 192

■ 177, 68, 88

■ 177, 195, 210

■ 177, 51, 74

■ 177, 204, 227

■ 177, 33, 59

■ 177, 214, 245

■ 177, 15, 45

■ 177, 218, 255

■ 177, 0, 33

■ 177, 216, 255

Harmonies

Analogous

The Analogous color harmony consists of three colors that are next to each other on the color wheel.



169, 140, 160



177, 139, 146



177, 141, 133

Triad

The Triadic color harmony groups three colors that are evenly spaced from another and form a triangle on the color wheel.



177, 139, 146



126, 153, 138



121, 141, 174

Complementary

The Complementary color scheme is a pair of colors which are on the opposite of each other on the color wheel.



177, 139, 146



139, 160, 177

Split Complementary

Split-complementary colors differ from the complementary color scheme. The scheme consists of three colors, the original color and two neighbors of the complement color.



112, 136, 165



177, 139, 146



126, 148, 156

Square

The Square scheme is like the rectangle color scheme, but the four colors are evenly spaced on the color wheel.



177, 139, 146



130, 156, 121



114, 137, 157



137, 146, 176

Rectangle

The Rectangle color scheme consists of four colors that form a rectangle on the color wheel.



177, 139, 146



172, 153, 126



114, 137, 157



117, 139, 171

Sweetspot

The Sweet Spot groups the original color and five complimentary colors.



177, 139, 146



230, 216, 218



169, 139, 177



115, 107, 108



242, 242, 242



115, 115, 115

Same Dimension

The Same Dimension uses a secret algorithm to generate beautiful new colors.



177, 139, 146



230, 170, 181



177, 154, 139



89, 80, 82



153, 0, 28



26, 0, 5

Inverse Universe

The Inverse Universe completely reimagines the original color for something new.



177, 139, 146



230, 170, 181



139, 155, 177



89, 80, 82



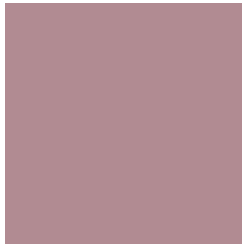
153, 0, 28



26, 0, 5

Previews

White Background



This preview shows how the RYB color 177, 139, 146 looks on a white background.

Color Contrast Check

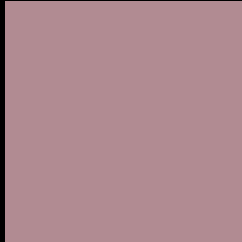
Large Text (above 18pt) WCAG AA ✓ Pass

Any Text WCAG AA ✗ Fail

Large Text (above 18pt) WCAG AAA ✗ Fail

Any Text WCAG AAA ✗ Fail

Black Background



This preview shows how the RYB color 177, 139, 146 looks on a black background.

Color Contrast Check

Large Text (above 18pt) WCAG AA ✓ Pass

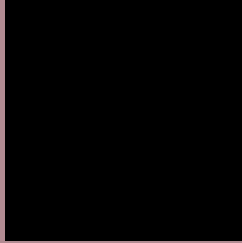
Any Text WCAG AA ✓ Pass

Large Text (above 18pt) WCAG AAA ✓ Pass

Any Text WCAG AAA × Fail

If you want to check with other color combinations, try the [Color Contrast Checker](#).

RYP 177, 139, 146 Background



This preview shows how black text looks on a background with the RYB color 177, 139, 146.



This preview shows how white text looks on a background with the RYB color 177, 139, 146.

Color Blindness Simulation

Color vision deficiency is a very complex topic, and I could not describe the different causes any better than Wikipedia does, so if you want to learn more, you should check out their [article about color blindness](#).

Dichromacy



Original Color
177, 139, 146

Protanopia
151, 148, 151

Deuteranopia
165, 144, 145



Tritanopia
177, 138, 149

Trichromacy



Original Color
177, 139, 146

Protanomaly
160, 145, 149

Deuteranomaly
169, 142, 145

Tritanomaly
177, 138, 148

Monochromacy



Original Color
177, 139, 146

Achromatopsia
151, 151, 151

Achromatomaly
160, 147, 149

CSS Examples

Text

The CSS property to change the color of the text to RYB 177, 139, 146 is called "color". The color property can be set on classes, ids or directly on the HTML element.

This example shows how text in the color rgb(177, 139, 146) looks like.

```
.text, #text, p{  
    color:rgb(177, 139, 146)  
}
```

If you want to add a text shadow in that color use the text-shadow property, you can generate a text shadow directly with our [CSS Text Shadow Generator](#).

Here you see how black text with a 4 pixel rgb(177, 139, 146) colored shadow looks like.

```
.shadow{ text-shadow: 4px 4px 2px rgb(177, 139, 146) }
```

Border

The CSS property to change the border of an element to RYB 177, 139, 146 is called "border". The border property can be set on classes, ids or directly on the HTML element.

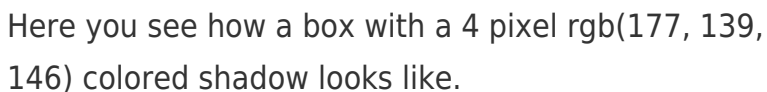
This example shows the color as border, it can be applied via the CSS property "border" or "border-color".

```
.border, #border, table{ border:4px solid rgb(177, 139, 146) }
```

If only the border color should be changed use the property `border-color`.

```
.border{ border-color:rgb(177, 139, 146) }
```

If you want to add a box shadow in that color use:



Here you see how a box with a 4 pixel `rgb(177, 139, 146)` colored shadow looks like.

```
.boxshadow{ -moz-box-shadow:4px 4px 4px  
4px rgb(177, 139, 146); -webkit-box-  
shadow:4px 4px 4px 4px rgb(177, 139, 146);  
box-shadow:4px 4px 4px 4px rgb(177, 139,  
146) }
```

Background

The CSS property to change the background color of an element to RYB 177, 139, 146 is called "background". The background property can be set on classes, ids or directly on the HTML element.

```
.background, #background, body{  
background: rgb(177, 139, 146) }
```

If only the background color should be changed can be used:

```
.background{ background-color: rgb(177,  
139, 146) }
```

This example shows the color as background, it is applied via the CSS property "background".

To optimize and compress your CSS code, you can use our [online CSS compressor and optimizer](#) based on csstidy. If you want to create a linear or radial gradient as background or border, check our [CSS Gradient Generator](#).

Hey! You found this booklet interesting? Support Converting Colors with the new Membership Option!

The pro membership hides all ads, plus gives you double the colors in the color bucket, and more awesome pro features!

[Learn more, Memberships starting at \\$2.50/m!](#)

**Follow me
on Twitter!**

@ConvertingColor