

Converting Colors

`RYB(177, 152, 155)`

Have a look what the booklet for
RYB(177, 152, 155) contains.

RYB(177, 152, 155)	3
<i>Conversions</i>	4
<i>Details</i>	6
<i>Harmonies</i>	11
<i>Previews</i>	23
<i>Color Blindness Simulation</i>	26
<i>CSS Examples</i>	29

Color

R_YB(177, 152, 155)

Conversions

Conversions Part 1

Format	Color
Hex	B1989B
RGB	177, 152, 155
RGB Percent	69%, 60%, 61%
CMY	0.3059, 0.4039, 0.3922
CMYK	0.00, 0.14, 0.12, 0.31
HSL	353°, 14%, 65%
HSV	353°, 14%, 69%
XYZ	35.2761, 34.1701, 35.7466
YIQ	159.8170, 13.9370, 6.2330

Conversions

Conversions Part 2

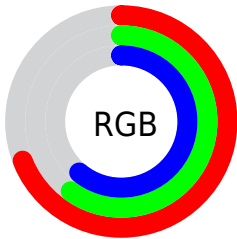
Format	Color
RYB	177, 152, 155
Decimal	11638939
CIELab	65.10, 9.76, 1.85
CIElCh	65, 9.939, 10.739
Yxy	34.1701, 0.3353, 0.3248
Android (android.graphics.Color)	4289829019 (0xFFB1989B)
YUV	159.8170, -2.3748, 15.0695
Hunter-Lab	58.4552, 5.4231, 4.6616

Details

The RYB color **177, 152, 155** is a light color, and the websafe version is hex **999999**. A complement of this color would be **152, 165, 177**, and the grayscale version is **160, 160, 160**.

A 20% lighter version of the original color is **233, 206, 209**, and **124, 101, 104** is the 20% darker color. If you saturate the color by 10%, you get **177, 134, 139**, and if you desaturate by 10%, it is **177, 170, 171**.

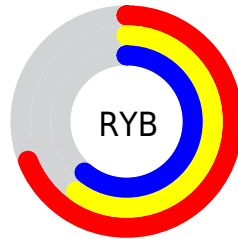
Distribution



Red (69%)

Green (60%)

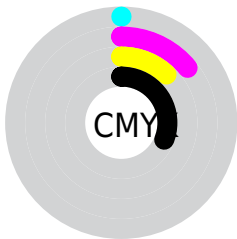
Blue (61%)



Red (69%)

Yellow (60%)

Blue (61%)

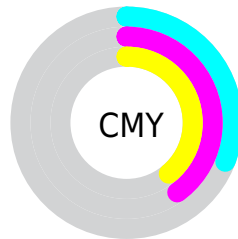


Cyan (0%)

Magenta (14%)

Yellow (12%)

Black (31%)



Cyan (31%)

Magenta (40%)

Yellow (39%)

Brightness & Saturation Gradients

These gradients show how the RYB color 177, 152, 155 changes by changing the brightness by 10 percent. The first figure shows a shift by +10% for each color and the second figure -10%.

Similar to the brightness gradients but the following saturation gradients show a change of the RYB color 177, 152, 155 by changing the saturation by 10% instead.


 177, 152, 155


255, 255, 255

 233, 206, 209

 255, 235, 238

 177, 152, 155


 150, 126, 129

 124, 101, 104


 99, 77, 80


 75, 54, 57


 52, 33, 36


 31, 11, 14


 0, 0, 0

 177, 152, 155

 177, 134, 139

 177, 152, 155

 177, 170, 171

 177, 117, 124

 177, 182, 187

 177, 99, 108

 177, 192, 205

 177, 81, 93

 177, 202, 223

 177, 64, 77

 177, 211, 241

 177, 46, 62

 177, 218, 255

 177, 28, 46

 177, 216, 255

 177, 10, 30

 177, 0, 21

Harmonies

Analogous

The Analogous color harmony consists of three colors that are next to each other on the color wheel.



173, 153, 164



177, 152, 155



176, 155, 147

Triad

The Triadic color harmony groups three colors that are evenly spaced from another and form a triangle on the color wheel.



177, 152, 155



144, 161, 153



142, 154, 174

Complementary

The Complementary color scheme is a pair of colors which are on the opposite of each other on the color wheel.



177, 152, 155



152, 165, 177

Split Complementary

Split-complementary colors differ from the complementary color scheme. The scheme consists of three colors, the original color and two neighbors of the complement color.



136, 151, 169



177, 152, 155



142, 156, 163

Square

The Square scheme is like the rectangle color scheme, but the four colors are evenly spaced on the color wheel.



177, 152, 155



146, 162, 141



137, 151, 163



153, 157, 175

Rectangle

The Rectangle color scheme consists of four colors that form a rectangle on the color wheel.



177, 152, 155



173, 163, 143



137, 151, 163



140, 153, 173

Sweetspot

The Sweet Spot groups the original color and five complimentary colors.



177, 152, 155



230, 220, 221



174, 152, 177



115, 109, 110



242, 242, 242



115, 115, 115

Same Dimension

The Same Dimension uses a secret algorithm to generate beautiful new colors.



177, 152, 155



230, 190, 195



177, 166, 152



89, 80, 81



153, 0, 18



26, 0, 3

Inverse Universe

The Inverse Universe completely reimagines the original color for something new.



177, 152, 155



230, 190, 195



152, 162, 177



89, 80, 81



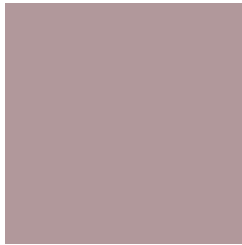
153, 0, 18



26, 0, 3

Previews

White Background



This preview shows how the RYB color 177, 152, 155 looks on a white background.

Color Contrast Check

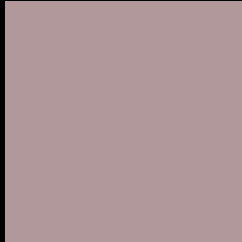
Large Text (above 18pt) WCAG AA × Fail

Any Text WCAG AA × Fail

Large Text (above 18pt) WCAG AAA × Fail

Any Text WCAG AAA × Fail

Black Background



This preview shows how the RYB color 177, 152, 155 looks on a black background.

Color Contrast Check

Large Text (above 18pt) WCAG AA ✓ Pass

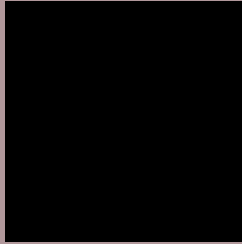
Any Text WCAG AA ✓ Pass

Large Text (above 18pt) WCAG AAA ✓ Pass

Any Text WCAG AAA ✓ Pass

If you want to check with other color combinations, try the [Color Contrast Checker](#).

RYB 177, 152, 155 Background



This preview shows how black text looks on a background with the RYB color 177, 152, 155.



This preview shows how white text looks on a background with the RYB color 177, 152, 155.

Color Blindness Simulation

Color vision deficiency is a very complex topic, and I could not describe the different causes any better than Wikipedia does, so if you want to learn more, you should check out their [article about color blindness](#).


Dichromacy



Original Color
177, 152, 155

Protanopia
161, 157, 158

Deuteranopia
175, 153, 155



Tritanopia
178, 151, 163

Trichromacy



Original Color

177, 152, 155

Protanomaly

167, 155, 157

Deuteranomaly

176, 153, 155

Tritanomaly

178, 151, 160

Monochromacy



Original Color

177, 152, 155

Achromatopsia

160, 160, 160

Achromatomaly

166, 157, 158

CSS Examples

Text

The CSS property to change the color of the text to RGB 177, 152, 155 is called "color". The color property can be set on classes, ids or directly on the HTML element.

This example shows how text in the color rgb(177, 152, 155) looks like.

```
.text, #text, p{  
    color:rgb(177, 152, 155)  
}
```

If you want to add a text shadow in that color use the text-shadow property, you can generate a text shadow directly with our [CSS Text Shadow Generator](#).

Here you see how black text with a 4 pixel rgb(177, 152, 155) colored shadow looks like.

```
.shadow{ text-shadow: 4px 4px 2px rgb(177, 152, 155) }
```

Border

The CSS property to change the border of an element to RYB 177, 152, 155 is called "border". The border property can be set on classes, ids or directly on the HTML element.

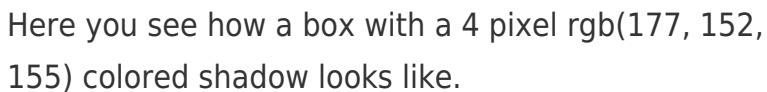
This example shows the color as border, it can be applied via the CSS property "border" or "border-color".

```
.border, #border, table{ border:4px solid rgb(177, 152, 155) }
```

If only the border color should be changed use the property `border-color`.

```
.border{ border-color:rgb(177, 152, 155) }
```

If you want to add a box shadow in that color use:



Here you see how a box with a 4 pixel `rgb(177, 152, 155)` colored shadow looks like.

```
.boxshadow{ -moz-box-shadow:4px 4px 4px  
4px rgb(177, 152, 155); -webkit-box-  
shadow:4px 4px 4px 4px rgb(177, 152, 155);  
box-shadow:4px 4px 4px 4px rgb(177, 152,  
155) }
```

Background

The CSS property to change the background color of an element to RYB 177, 152, 155 is called "background". The background property can be set on classes, ids or directly on the HTML element.

```
.background, #background, body{  
background: rgb(177, 152, 155) }
```

If only the background color should be changed can be used:

```
.background{ background-color: rgb(177,  
152, 155) }
```

This example shows the color as background, it is applied via the CSS property "background".

To optimize and compress your CSS code, you can use our [online CSS compressor and optimizer](#) based on csstidy. If you want to create a linear or radial gradient as background or border, check our [CSS Gradient Generator](#).

Hey! You found this booklet interesting? Support Converting Colors with the new Membership Option!

The pro membership hides all ads, plus gives you double the colors in the color bucket, and more awesome pro features!

[Learn more, Memberships starting at \\$2.50/m!](#)

**Follow me
on Twitter!**

@ConvertingColor