

# Converting Colors

`RYB(178, 146, 125)`

Have a look what the booklet for  
RYB(178, 146, 125) contains.

<b>RYB(178, 146, 125)</b> .....	3
<b><i>Conversions</i></b> .....	4
<b><i>Details</i></b> .....	6
<b><i>Harmonies</i></b> .....	11
<b><i>Previews</i></b> .....	23
<b><i>Color Blindness Simulation</i></b> .....	26
<b><i>CSS Examples</i></b> .....	29

# Color

**R<sub>Y</sub>B(178, 146, 125)**

# Conversions

## Conversions Part 1

<b>Format</b>	<b>Color</b>
Hex	B28C7D
RGB	178, 140, 125
RGB Percent	70%, 55%, 49%
CMY	0.3020, 0.4508, 0.5098
CMYK	0.00, 0.21, 0.30, 0.30
HSL	17°, 26%, 59%
HSV	17°, 30%, 70%
XYZ	31.4458, 29.7137, 23.4800
YIQ	149.6520, 27.4630, 3.3910

# Conversions

## Conversions Part 2

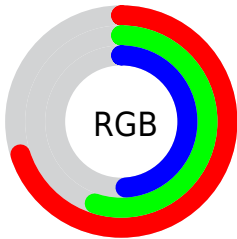
<b>Format</b>	<b>Color</b>
<b>R<sub>YB</sub></b>	178, 146, 125
Decimal	11701373
CIE <sub>Lab</sub>	61.41, 12.17, 13.53
CIE <sub>LCh</sub>	61, 18.193, 48.025
Yxy	29.7137, 0.3715, 0.3511
Android (android.graphics.Color)	4289891453 (0xFFB28C7D)
YUV	149.6520, -12.1534, 24.8612
Hunter-Lab	54.5102, 7.5799, 12.6183

# Details

The RYB color **178, 146, 125** is a dark color, and the websafe version is hex **CC9999**. A complement of this color would be **125, 147, 178**, and the grayscale version is **150, 150, 150**.

A 20% lighter version of the original color is **235, 200, 178**, and **124, 96, 76** is the 20% darker color. If you saturate the color by 10%, you get **178, 135, 107**, and if you desaturate by 10%, it is **178, 157, 143**.

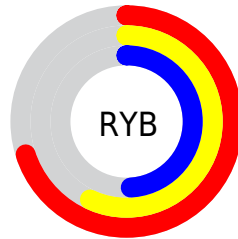
# Distribution



Red (70%)

Green (55%)

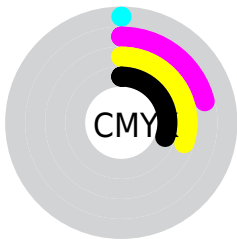
Blue (49%)



Red (70%)

Yellow (57%)

Blue (49%)

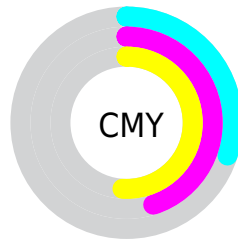


Cyan (0%)

Magenta (21%)

Yellow (30%)

Black (30%)



Cyan (30%)

Magenta (45%)

Yellow (51%)

# Brightness & Saturation Gradients

These gradients show how the RYB color 178, 146, 125 changes by changing the brightness by 10 percent. The first figure shows a shift by +10% for each color and the second figure -10%.

Similar to the brightness gradients but the following saturation gradients show a change of the RYB color 178, 146, 125 by changing the saturation by 10% instead.



 178, 146, 125


255, 255, 255

 235, 200, 178

 255, 231, 205

 239, 255, 233

 178, 146, 125

 151, 119, 100

 124, 96, 76

 99, 71, 53

 74, 49, 32

 50, 30, 9

 29, 0, 0


 0, 0, 0

 178, 146, 125


 178, 135, 107

 178, 146, 125


 178, 157, 143

 178, 126, 89

 178, 168, 161

 178, 114, 72

 178, 178, 178

 178, 103, 54

 178, 186, 196

 178, 92, 36

 178, 193, 214

 178, 83, 18

 178, 201, 232

 178, 71, 0

 178, 208, 250

 178, 213, 255

 178, 217, 255

# Harmonies

## Analogous

The Analogous color harmony consists of three colors that are next to each other on the color wheel.



182, 137, 139



178, 146, 125



156, 167, 117

# Triad

The Triadic color harmony groups three colors that are evenly spaced from another and form a triangle on the color wheel.



178, 146, 125



115, 141, 157



143, 146, 179

# Complementary

The Complementary color scheme is a pair of colors which are on the opposite of each other on the color wheel.



178, 146, 125



125, 147, 178

# Split Complementary

Split-complementary colors differ from the complementary color scheme. The scheme consists of three colors, the original color and two neighbors of the complement color.



121, 141, 179



178, 146, 125



105, 131, 158

# Square

The Square scheme is like the rectangle color scheme, but the four colors are evenly spaced on the color wheel.



178, 146, 125



126, 155, 149



107, 135, 172



163, 141, 170

# Rectangle

The Rectangle color scheme consists of four colors that form a rectangle on the color wheel.



178, 146, 125



124, 156, 116



107, 135, 172



135, 145, 180



# Sweetspot

The Sweet Spot groups the original color and five complimentary colors.



178, 146, 125



232, 219, 211



178, 125, 163



117, 110, 104



245, 245, 245



117, 117, 117



# Same Dimension

The Same Dimension uses a secret algorithm to generate beautiful new colors.



178, 146, 125



232, 181, 149



139, 178, 125



89, 85, 80



153, 60, 0



26, 10, 0



# Inverse Universe

The Inverse Universe completely reimagines the original color for something new.



125, 147, 178



149, 183, 232



125, 134, 178



80, 84, 89



0, 64, 153



0, 11, 26



# Previews

## White Background



This preview shows how the RYB color 178, 146, 125 looks on a white background.

## Color Contrast Check

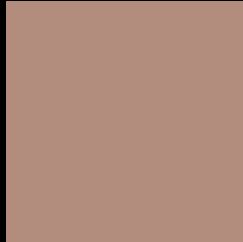
Large Text (above 18pt) WCAG AA ✓ Pass

Any Text WCAG AA × Fail

Large Text (above 18pt) WCAG AAA × Fail

Any Text WCAG AAA × Fail

# Black Background



This preview shows how the RYB color 178, 146, 125 looks on a black background.

## Color Contrast Check

Large Text (above 18pt) WCAG AA ✓ Pass

Any Text WCAG AA ✓ Pass

Large Text (above 18pt) WCAG AAA ✓ Pass

Any Text WCAG AAA × Fail

If you want to check with other color combinations, try the [Color Contrast Checker](#).



## **RYB 178, 146, 125 Background**



This preview shows how black text looks on a background with the RYB color 178, 146, 125.



This preview shows how white text looks on a background with the RYB color 178, 146, 125.

# Color Blindness Simulation

Color vision deficiency is a very complex topic, and I could not describe the different causes any better than Wikipedia does, so if you want to learn more, you should check out their [article about color blindness](#).

## Dichromacy





**Tritanopia**  
180, 137, 147

# Trichromacy



**Original Color**

178, 146, 125

**Protanomaly**

164, 160, 128

**Deuteranomaly**

174, 152, 124

**Tritanomaly**

179, 138, 139

# Monochromacy



**Original Color**

178, 146, 125

**Achromatopsia**

150, 150, 150

**Achromatomaly**

160, 148, 141

# CSS Examples

## Text

The CSS property to change the color of the text to RYB 178, 146, 125 is called "color". The color property can be set on classes, ids or directly on the HTML element.

This example shows how text in the color rgb(178, 140, 125) looks like.

```
.text, #text, p{  
    color:rgb(178, 140, 125)  
}
```

If you want to add a text shadow in that color use the text-shadow property, you can generate a text shadow directly with our [CSS Text Shadow Generator](#).

Here you see how black text with a 4 pixel rgb(178, 140, 125) colored shadow looks like.

```
.shadow{ text-shadow: 4px 4px 2px rgb(178, 140, 125) }
```

## Border

The CSS property to change the border of an element to RYB 178, 146, 125 is called "border". The border property can be set on classes, ids or directly on the HTML element.

This example shows the color as border, it can be applied via the CSS property "border" or "border-color".

```
.border, #border, table{ border:4px solid rgb(178, 140, 125) }
```

If only the border color should be changed use the property `border-color`.

```
.border{ border-color:rgb(178, 140, 125) }
```

If you want to add a box shadow in that color use:

Here you see how a box with a 4 pixel `rgb(178, 140, 125)` colored shadow looks like.

```
.boxshadow{ -moz-box-shadow:4px 4px 4px  
4px rgb(178, 140, 125); -webkit-box-  
shadow:4px 4px 4px 4px rgb(178, 140, 125);  
box-shadow:4px 4px 4px 4px rgb(178, 140,  
125) }
```

# Background

The CSS property to change the background color of an element to RYB 178, 146, 125 is called "background". The background property can be set on classes, ids or directly on the HTML element.

```
.background, #background, body{  
background: rgb(178, 140, 125) }
```

If only the background color should be changed can be used:

```
.background{ background-color: rgb(178,  
140, 125) }
```

This example shows the color as background, it is applied via the CSS property "background".

To optimize and compress your CSS code, you can use our [online CSS compressor and optimizer](#) based on csstidy. If you want to create a linear or radial gradient as background or border, check our [CSS Gradient Generator](#).



Hey! You found this booklet interesting? Support Converting Colors with the new Membership Option!

The pro membership hides all ads, plus gives you double the colors in the color bucket, and more awesome pro features!

**[Learn more, Memberships starting at \\$2.50/m!](#)**

**Follow me  
on Twitter!**

@ConvertingColor