

Converting Colors

`RYB(178, 178, 110)`

Have a look what the booklet for
RYB(178, 178, 110) contains.

RYB(178, 178, 110)	3
<i>Conversions</i>	4
<i>Details</i>	6
<i>Harmonies</i>	11
<i>Previews</i>	23
<i>Color Blindness Simulation</i>	26
<i>CSS Examples</i>	29

Color

R_YB(178, 178, 110)

Conversions

Conversions Part 1

Format	Color
Hex	B2906E
RGB	178, 144, 110
RGB Percent	70%, 56%, 43%
CMY	0.3020, 0.4353, 0.5686
CMYK	0.00, 0.19, 0.38, 0.30
HSL	30°, 31%, 56%
HSV	30°, 38%, 70%
XYZ	31.1478, 30.5373, 19.0045
YIQ	150.2900, 31.1780, -3.3660

Conversions

Conversions Part 2

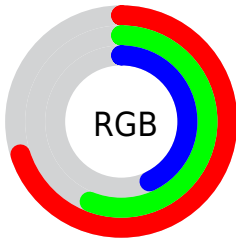
Format	Color
RYB	178, 178, 110
Decimal	11702382
CIELab	62.12, 8.02, 22.91
CIELCh	62, 24.273, 70.713
Yxy	30.5373, 0.3860, 0.3785
Android (android.graphics.Color)	4289892462 (0xFFB2906E)
YUV	150.2900, -19.8630, 24.3017
Hunter-Lab	55.2606, 3.9063, 18.2922

Details

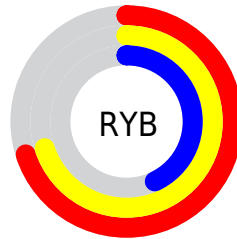
The RYB color **178, 178, 110** is a dark color, and the websafe version is hex **CC9966**. A complement of this color would be **110, 133, 178**, and the grayscale version is **150, 150, 150**.

A 20% lighter version of the original color is **235, 233, 162**, and **120, 124, 62** is the 20% darker color. If you saturate the color by 10%, you get **178, 178, 92**, and if you desaturate by 10%, it is **178, 178, 128**.

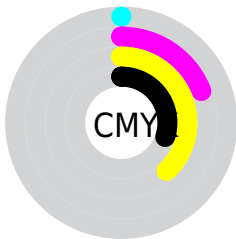
Distribution



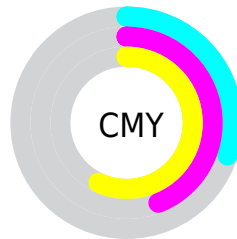
- Red (70%)
- Green (56%)
- Blue (43%)



- Red (70%)
- Yellow (70%)
- Blue (43%)



- Cyan (0%)
- Magenta (19%)
- Yellow (38%)
- Black (30%)



- Cyan (30%)
- Magenta (44%)
- Yellow (57%)

Brightness & Saturation Gradients

These gradients show how the RYB color 178, 178, 110 changes by changing the brightness by 10 percent. The first figure shows a shift by +10% for each color and the second figure -10%.

Similar to the brightness gradients but the following saturation gradients show a change of the RYB color 178, 178, 110 by changing the saturation by 10% instead.

 178, 178, 110

255, 255, 255


 235, 233, 162

 241, 255, 189

 218, 255, 217

 245, 255, 245

 178, 178, 110

 151, 151, 85

 120, 124, 62

 94, 98, 40


 64, 73, 18

 40, 49, 0

 25, 1, 0

 0, 0, 0

 178, 178, 110

 178, 178, 92

 178, 178, 110

 178, 178, 128

■ 178, 178, 74

■ 178, 178, 146

■ 178, 176, 57

■ 176, 178, 163

■ 178, 176, 39

■ 178, 179, 181

■ 178, 176, 21

■ 178, 185, 199

■ 176, 178, 3

■ 178, 191, 217

■ 178, 178, 0

■ 178, 197, 235

■ 178, 203, 252

■ 178, 207, 255

Harmonies

Analogous

The Analogous color harmony consists of three colors that are next to each other on the color wheel.



191, 142, 123



178, 178, 110



116, 158, 108

Triad

The Triadic color harmony groups three colors that are evenly spaced from another and form a triangle on the color wheel.



178, 178, 110



90, 127, 162



163, 142, 183

Complementary

The Complementary color scheme is a pair of colors which are on the opposite of each other on the color wheel.



178, 178, 110



110, 133, 178

Split Complementary

Split-complementary colors differ from the complementary color scheme. The scheme consists of three colors, the original color and two neighbors of the complement color.



134, 146, 192



178, 178, 110



86, 127, 177

Square

The Square scheme is like the rectangle color scheme, but the four colors are evenly spaced on the color wheel.



178, 178, 110



109, 144, 161



105, 137, 190



184, 136, 165

Rectangle

The Rectangle color scheme consists of four colors that form a rectangle on the color wheel.



178, 178, 110



113, 155, 126



105, 137, 190



154, 144, 187

Sweetspot

The Sweet Spot groups the original color and five complimentary colors.



178, 178, 110



232, 230, 207



178, 110, 144



115, 117, 102



245, 245, 245



117, 117, 117

Same Dimension

The Same Dimension uses a secret algorithm to generate beautiful new colors.



178, 178, 110



230, 232, 125



110, 178, 110



87, 89, 80



151, 153, 0



26, 26, 0

Inverse Universe

The Inverse Universe completely reimagines the original color for something new.



110, 133, 178



125, 161, 232



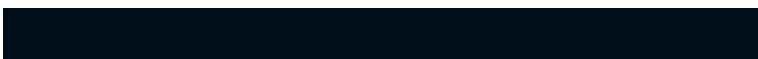
110, 110, 178



80, 83, 89



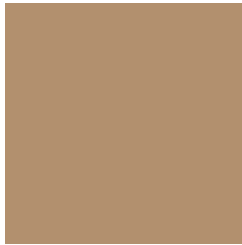
0, 51, 153



0, 9, 26

Previews

White Background



This preview shows how the RYB color 178, 178, 110 looks on a white background.

Color Contrast Check

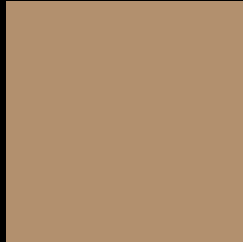
Large Text (above 18pt) WCAG AA × Fail

Any Text WCAG AA × Fail

Large Text (above 18pt) WCAG AAA × Fail

Any Text WCAG AAA × Fail

Black Background



This preview shows how the RYB color 178, 178, 110 looks on a black background.

Color Contrast Check

Large Text (above 18pt) WCAG AA ✓ Pass

Any Text WCAG AA ✓ Pass

Large Text (above 18pt) WCAG AAA ✓ Pass

Any Text WCAG AAA ✓ Pass

If you want to check with other color combinations, try the [Color Contrast Checker](#).

R Y B 178, 178, 110 Background



This preview shows how black text looks on a background with the RYB color 178, 178, 110.



This preview shows how white text looks on a background with the RYB color 178, 178, 110.

Color Blindness Simulation

Color vision deficiency is a very complex topic, and I could not describe the different causes any better than Wikipedia does, so if you want to learn more, you should check out their [article about color blindness](#).

Dichromacy



Original Color
178, 178, 110

Protanopia
127, 161, 113

Deuteranopia
178, 178, 110



Tritanopia

182, 139, 149

Trichromacy



Original Color
178, 178, 110

Protanomaly
141, 167, 112

Deuteranomaly
178, 178, 110

Tritanomaly
181, 142, 135

Monochromacy



Original Color
178, 178, 110

Achromatopsia
150, 150, 150

Achromatomaly
158, 160, 135

CSS Examples

Text

The CSS property to change the color of the text to RYB 178, 178, 110 is called "color". The color property can be set on classes, ids or directly on the HTML element.

This example shows how text in the color `rgb(178, 144, 110)` looks like.

```
.text, #text, p{  
    color:rgb(178, 144, 110)  
}
```

If you want to add a text shadow in that color use the text-shadow property, you can generate a text shadow directly with our [CSS Text Shadow Generator](#).

Here you see how black text with a 4 pixel rgb(178, 144, 110) colored shadow looks like.

```
.shadow{ text-shadow: 4px 4px 2px rgb(178, 144, 110) }
```

Border

The CSS property to change the border of an element to RYB 178, 178, 110 is called "border". The border property can be set on classes, ids or directly on the HTML element.

This example shows the color as border, it can be applied via the CSS property "border" or "border-color".

```
.border, #border, table{ border:4px solid rgb(178, 144, 110) }
```

If only the border color should be changed use the property `border-color`.

```
.border{ border-color:rgb(178, 144, 110) }
```

If you want to add a box shadow in that color use:

Here you see how a box with a 4 pixel `rgb(178, 144, 110)` colored shadow looks like.

```
.boxshadow{ -moz-box-shadow:4px 4px 4px  
4px rgb(178, 144, 110); -webkit-box-  
shadow:4px 4px 4px 4px rgb(178, 144, 110);  
box-shadow:4px 4px 4px 4px rgb(178, 144,  
110) }
```

Background

The CSS property to change the background color of an element to RYB 178, 178, 110 is called "background". The background property can be set on classes, ids or directly on the HTML element.

```
.background, #background, body{  
background: rgb(178, 144, 110) }
```

If only the background color should be changed can be used:

```
.background{ background-color: rgb(178,  
144, 110) }
```

This example shows the color as background, it is applied via the CSS property "background".

To optimize and compress your CSS code, you can use our [online CSS compressor and optimizer](#) based on csstidy. If you want to create a linear or radial gradient as background or border, check our [CSS Gradient Generator](#).

Hey! You found this booklet interesting? Support Converting Colors with the new Membership Option!

The pro membership hides all ads, plus gives you double the colors in the color bucket, and more awesome pro features!

[Learn more, Memberships starting at \\$2.50/m!](#)

**Follow me
on Twitter!**

@ConvertingColor