

Converting Colors

`RYB(180, 128, 133)`

Have a look what the booklet for
RYB(180, 128, 133) contains.

RYB(180, 128, 133)	3
<i>Conversions</i>	4
<i>Details</i>	6
<i>Harmonies</i>	11
<i>Previews</i>	23
<i>Color Blindness Simulation</i>	26
<i>CSS Examples</i>	29

Color

R_YB(180, 128, 133)

Conversions

Conversions Part 1

Format	Color
Hex	B48085
RGB	180, 128, 133
RGB Percent	71%, 50%, 52%
CMY	0.2941, 0.4980, 0.4784
CMYK	0.00, 0.29, 0.26, 0.29
HSL	354°, 26%, 60%
HSV	354°, 29%, 71%
XYZ	30.7752, 26.8351, 25.7480
YIQ	144.1180, 29.3870, 12.5790

Conversions

Conversions Part 2

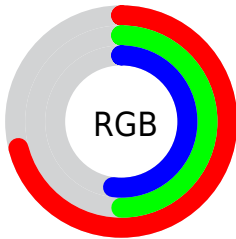
Format	Color
RYB	180, 128, 133
Decimal	11829381
CIELab	58.82, 20.83, 5.32
CIELCh	59, 21.504, 14.337
Yxy	26.8351, 0.3692, 0.3219
Android (android.graphics.Color)	4290019461 (0xFFB48085)
YUV	144.1180, -5.4812, 31.4685
Hunter-Lab	51.8026, 15.3898, 6.7923

Details

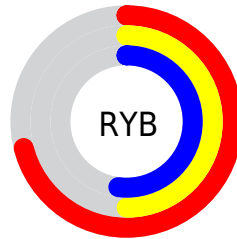
The RYB color **180, 128, 133** is a light color, and the websafe version is hex **CC9999**. A complement of this color would be **128, 155, 180**, and the grayscale version is **144, 144, 144**.

A 20% lighter version of the original color is **237, 181, 186**, and **126, 78, 84** is the 20% darker color. If you saturate the color by 10%, you get **180, 110, 117**, and if you desaturate by 10%, it is **180, 146, 149**.

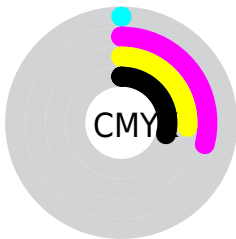
Distribution



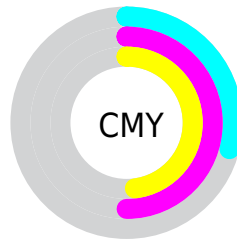
- Red (71%)
- Green (50%)
- Blue (52%)



- Red (71%)
- Yellow (50%)
- Blue (52%)



- Cyan (0%)
- Magenta (29%)
- Yellow (26%)
- Black (29%)




- Cyan (29%)
- Magenta (50%)
- Yellow (48%)

Brightness & Saturation Gradients

These gradients show how the RYB color 180, 128, 133 changes by changing the brightness by 10 percent. The first figure shows a shift by +10% for each color and the second figure -10%.

Similar to the brightness gradients but the following saturation gradients show a change of the RYB color 180, 128, 133 by changing the saturation by 10% instead.


 180, 128, 133


255, 255, 255

 237, 181, 186

 255, 209, 214

 255, 237, 242


 180, 128, 133

 153, 103, 108

 126, 78, 84

 100, 55, 61

 75, 33, 39

 51, 11, 18


 29, 0, 1

 0, 0, 0


 180, 128, 133

 180, 110, 117


 180, 128, 133

 180, 146, 149


 180, 92, 100

 180, 164, 166

 180, 74, 84

 180, 181, 182

 180, 56, 68

 180, 191, 200

 180, 38, 52

 180, 200, 218

 180, 20, 35

 180, 209, 236

 180, 2, 19

 180, 219, 254

 180, 0, 17

 180, 218, 255

Harmonies

Analogous

The Analogous color harmony consists of three colors that are next to each other on the color wheel.



173, 129, 152



180, 128, 133



177, 136, 116

Triad

The Triadic color harmony groups three colors that are evenly spaced from another and form a triangle on the color wheel.



180, 128, 133



114, 148, 137



105, 131, 177

Complementary

The Complementary color scheme is a pair of colors which are on the opposite of each other on the color wheel.



180, 128, 133



128, 155, 180

Split Complementary

Split-complementary colors differ from the complementary color scheme. The scheme consists of three colors, the original color and two neighbors of the complement color.



88, 123, 167



180, 128, 133



104, 134, 151

Square

The Square scheme is like the rectangle color scheme, but the four colors are evenly spaced on the color wheel.



180, 128, 133



108, 146, 105



89, 121, 152



131, 139, 178

Rectangle

The Rectangle color scheme consists of four colors that form a rectangle on the color wheel.



180, 128, 133



169, 156, 108



89, 121, 152



98, 128, 175

Sweetspot

The Sweet Spot groups the original color and five complimentary colors.



180, 128, 133



235, 213, 216



175, 128, 180



117, 104, 106



245, 245, 245



117, 117, 117

Same Dimension

The Same Dimension uses a secret algorithm to generate beautiful new colors.



180, 128, 133



235, 152, 160



180, 163, 128



89, 80, 81



153, 0, 15



26, 0, 2

Inverse Universe

The Inverse Universe completely reimagines the original color for something new.



180, 128, 133



235, 152, 160



128, 147, 180



89, 80, 81



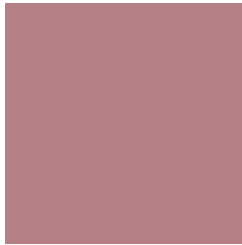
153, 0, 15



26, 0, 2

Previews

White Background



This preview shows how the RYB color 180, 128, 133 looks on a white background.

Color Contrast Check

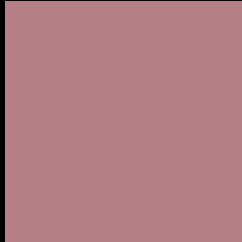
Large Text (above 18pt) WCAG AA ✓ Pass

Any Text WCAG AA × Fail

Large Text (above 18pt) WCAG AAA × Fail

Any Text WCAG AAA × Fail

Black Background



This preview shows how the RYB color 180, 128, 133 looks on a black background.

Color Contrast Check

Large Text (above 18pt) WCAG AA ✓ Pass

Any Text WCAG AA ✓ Pass

Large Text (above 18pt) WCAG AAA ✓ Pass

Any Text WCAG AAA × Fail

If you want to check with other color combinations, try the [Color Contrast Checker](#).

RYP 180, 128, 133 Background



This preview shows how black text looks on a background with the RYB color 180, 128, 133.



This preview shows how white text looks on a background with the RYB color 180, 128, 133.

Color Blindness Simulation

Color vision deficiency is a very complex topic, and I could not describe the different causes any better than Wikipedia does, so if you want to learn more, you should check out their [article about color blindness](#).

Dichromacy



Original Color
180, 128, 133

Protanopia
145, 141, 140

Deuteranopia
159, 139, 131



Tritanopia
180, 127, 137

Trichromacy



Original Color
180, 128, 133

Protanomaly
158, 136, 137

Deuteranomaly
167, 134, 132

Tritanomaly
180, 127, 136

Monochromacy



Original Color
180, 128, 133

Achromatopsia
144, 144, 144

Achromatomaly
157, 138, 140

CSS Examples

Text

The CSS property to change the color of the text to RYB 180, 128, 133 is called "color". The color property can be set on classes, ids or directly on the HTML element.

This example shows how text in the color `rgb(180, 128, 133)` looks like.

```
.text, #text, p{  
    color:rgb(180, 128, 133)  
}
```

If you want to add a text shadow in that color use the text-shadow property, you can generate a text shadow directly with our [CSS Text Shadow Generator](#).

Here you see how black text with a 4 pixel rgb(180, 128, 133) colored shadow looks like.

```
.shadow{ text-shadow: 4px 4px 2px rgb(180, 128, 133) }
```

Border

The CSS property to change the border of an element to RYB 180, 128, 133 is called "border". The border property can be set on classes, ids or directly on the HTML element.

This example shows the color as border, it can be applied via the CSS property "border" or "border-color".

```
.border, #border, table{ border:4px solid rgb(180, 128, 133) }
```

If only the border color should be changed use the property `border-color`.

```
.border{ border-color:rgb(180, 128, 133) }
```

If you want to add a box shadow in that color use:

Here you see how a box with a 4 pixel `rgb(180, 128, 133)` colored shadow looks like.

```
.boxshadow{ -moz-box-shadow:4px 4px 4px  
4px rgb(180, 128, 133); -webkit-box-  
shadow:4px 4px 4px 4px rgb(180, 128, 133);  
box-shadow:4px 4px 4px 4px rgb(180, 128,  
133) }
```

Background

The CSS property to change the background color of an element to RYB 180, 128, 133 is called "background". The background property can be set on classes, ids or directly on the HTML element.

```
.background, #background, body{  
background: rgb(180, 128, 133) }
```

If only the background color should be changed can be used:

```
.background{ background-color: rgb(180,  
128, 133) }
```

This example shows the color as background, it is applied via the CSS property "background".

To optimize and compress your CSS code, you can use our [online CSS compressor and optimizer](#) based on csstidy. If you want to create a linear or radial gradient as background or border, check our [CSS Gradient Generator](#).

Hey! You found this booklet interesting? Support Converting Colors with the new Membership Option!

The pro membership hides all ads, plus gives you double the colors in the color bucket, and more awesome pro features!

[Learn more, Memberships starting at \\$2.50/m!](#)

**Follow me
on Twitter!**

@ConvertingColor