

# Converting Colors

`RYB(180, 129, 97)`

Have a look what the booklet for  
RYB(180, 129, 97) contains.

<b>RYB(180, 129, 97)</b> .....	3
<b><i>Conversions</i></b> .....	4
<b><i>Details</i></b> .....	6
<b><i>Harmonies</i></b> .....	11
<b><i>Previews</i></b> .....	23
<b><i>Color Blindness Simulation</i></b> .....	26
<b><i>CSS Examples</i></b> .....	29

# Color

**R<sub>Y</sub>B(180, 129, 97)**

# Conversions

## Conversions Part 1

<b>Format</b>	<b>Color</b>
Hex	B47861
RGB	180, 120, 97
RGB Percent	71%, 47%, 38%
CMY	0.2941, 0.5290, 0.6196
CMYK	0.00, 0.33, 0.46, 0.29
HSL	17°, 36%, 54%
HSV	17°, 46%, 71%
XYZ	27.7080, 24.0223, 14.4857
YIQ	135.3180, 43.1430, 5.5670

# Conversions

## Conversions Part 2

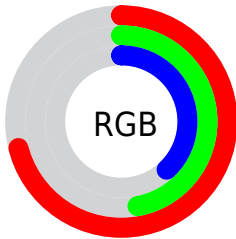
Format	Color
R <sub>Y</sub> B	180, 129, 97
Decimal	11827297
CIE Lab	56.11, 20.71, 22.23
CIE LCh	56, 30.383, 47.022
Yxy	24.0223, 0.4184, 0.3628
Android (android.graphics.Color)	4290017377 (0xFFB47861)
YUV	135.3180, -18.8908, 39.1861
Hunter-Lab	49.0126, 15.1385, 16.7857

# Details

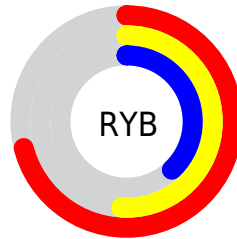
The RYB color **180, 129, 97** is a dark color, and the websafe version is hex **996666**. A complement of this color would be **97, 132, 180**, and the grayscale version is **136, 136, 136**.

A 20% lighter version of the original color is **238, 183, 148**, and **125, 79, 50** is the 20% darker color. If you saturate the color by 10%, you get **180, 118, 79**, and if you desaturate by 10%, it is **180, 140, 115**.

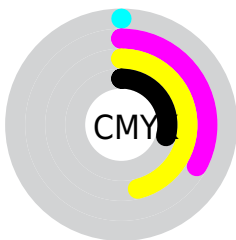
# Distribution



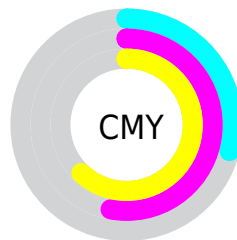
- Red (71%)
- Green (47%)
- Blue (38%)



- Red (71%)
- Yellow (51%)
- Blue (38%)



- Cyan (0%)
- Magenta (33%)
- Yellow (46%)
- Black (29%)



- Cyan (29%)
- Magenta (53%)
- Yellow (62%)

# Brightness & Saturation Gradients

These gradients show how the RYB color 180, 129, 97 changes by changing the brightness by 10 percent. The first figure shows a shift by +10% for each color and the second figure -10%.

Similar to the brightness gradients but the following saturation gradients show a change of the RYB color 180, 129, 97 by changing the saturation by 10% instead.




 180, 129, 97       180, 129, 97

255, 255, 255       152, 103, 73

 238, 183, 148       125, 79, 50

 255, 212, 174       98, 55, 29

 255, 253, 202       72, 36, 5

 230, 255, 230       47, 4, 0

 10, 0, 0

 0, 0, 0

 180, 129, 97       180, 129, 97

 180, 118, 79       180, 140, 115

180, 107, 61

180, 151, 133

180, 96, 43

180, 162, 151

180, 85, 25

180, 173, 169

180, 73, 7

180, 183, 187

180, 69, 0

180, 190, 205

180, 198, 223

180, 206, 241

180, 212, 255

# Harmonies

## Analogous

The Analogous color harmony consists of three colors that are next to each other on the color wheel.



186, 115, 120



180, 129, 97



140, 162, 83

# Triad

The Triadic color harmony groups three colors that are evenly spaced from another and form a triangle on the color wheel.



180, 129, 97



74, 119, 148



121, 130, 185

# Complementary

The Complementary color scheme is a pair of colors which are on the opposite of each other on the color wheel.



180, 129, 97



97, 132, 180

# Split Complementary

Split-complementary colors differ from the complementary color scheme. The scheme consists of three colors, the original color and two neighbors of the complement color.



78, 117, 185



180, 129, 97



40, 95, 149

# Square

The Square scheme is like the rectangle color scheme, but the four colors are evenly spaced on the color wheel.



180, 129, 97



98, 144, 135



37, 97, 172



156, 122, 171

# Rectangle

The Rectangle color scheme consists of four colors that form a rectangle on the color wheel.



180, 129, 97



95, 146, 82



37, 97, 172



107, 128, 187



# Sweetspot

The Sweet Spot groups the original color and five complimentary colors.



180, 129, 97



235, 214, 202



180, 97, 158



117, 106, 97



245, 245, 245



117, 117, 117



# Same Dimension

The Same Dimension uses a secret algorithm to generate beautiful new colors.



180, 129, 97



235, 154, 106



122, 180, 97



89, 85, 80



153, 60, 0



26, 10, 0



# Inverse Universe

The Inverse Universe completely reimagines the original color for something new.



97, 132, 180



106, 160, 235



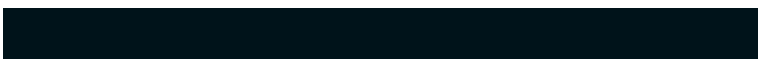
97, 112, 180



80, 84, 89



0, 64, 153



0, 11, 26



# Previews

## White Background



This preview shows how the RYB color 180, 129, 97 looks on a white background.

## Color Contrast Check

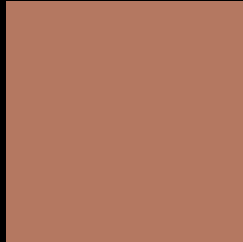
Large Text (above 18pt) WCAG AA ✓ Pass

Any Text WCAG AA × Fail

Large Text (above 18pt) WCAG AAA × Fail

Any Text WCAG AAA × Fail

# Black Background



This preview shows how the RYB color 180, 129, 97 looks on a black background.

## Color Contrast Check

Large Text (above 18pt) WCAG AA ✓ Pass

Any Text WCAG AA ✓ Pass

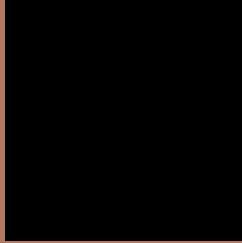
Large Text (above 18pt) WCAG AAA ✓ Pass

Any Text WCAG AAA × Fail

If you want to check with other color combinations, try the [Color Contrast Checker](#).



## R Y B 180, 129, 97 Background



This preview shows how black text looks on a background with the R Y B color 180, 129, 97.

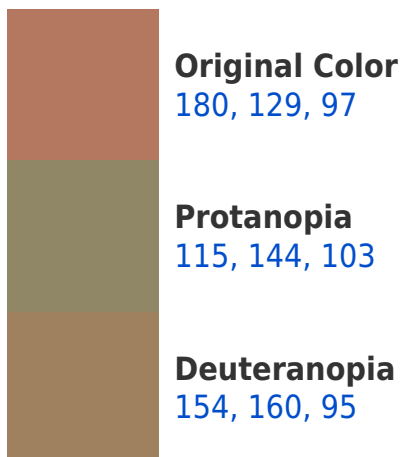



This preview shows how white text looks on a background with the R Y B color 180, 129, 97.

# Color Blindness Simulation

Color vision deficiency is a very complex topic, and I could not describe the different causes any better than Wikipedia does, so if you want to learn more, you should check out their [article about color blindness](#).

## Dichromacy





**Tritanopia**  
182, 116, 125

# Trichromacy



**Original Color**

180, 129, 97

**Protanomaly**

153, 157, 101

**Deuteranomaly**

167, 148, 96

**Tritanomaly**

181, 117, 115

# Monochromacy



**Original Color**

180, 129, 97

**Achromatopsia**

135, 135, 135

**Achromatomaly**

151, 134, 121

# CSS Examples

## Text

The CSS property to change the color of the text to RYB 180, 129, 97 is called "color". The color property can be set on classes, ids or directly on the HTML element.

This example shows how text in the color `rgb(180, 120, 97)` looks like.

```
.text, #text, p{  
    color:rgb(180, 120, 97)  
}
```

If you want to add a text shadow in that color use the text-shadow property, you can generate a text shadow directly with our [CSS Text Shadow Generator](#).

Here you see how black text with a 4 pixel rgb(180, 120, 97) colored shadow looks like.

```
.shadow{ text-shadow: 4px 4px 2px rgb(180, 120, 97) }
```

## Border

The CSS property to change the border of an element to RYB 180, 129, 97 is called "border". The border property can be set on classes, ids or directly on the HTML element.

This example shows the color as border, it can be applied via the CSS property "border" or "border-color".

```
.border, #border, table{ border:4px solid rgb(180, 120, 97) }
```

If only the border color should be changed use the property `border-color`.

```
.border{ border-color:rgb(180, 120, 97) }
```

If you want to add a box shadow in that color use:

Here you see how a box with a 4 pixel `rgb(180, 120, 97)` colored shadow looks like.

```
.boxshadow{ -moz-box-shadow:4px 4px 4px  
4px rgb(180, 120, 97); -webkit-box-  
shadow:4px 4px 4px 4px rgb(180, 120, 97);  
box-shadow:4px 4px 4px 4px rgb(180, 120,  
97) }
```

# Background

The CSS property to change the background color of an element to RGB 180, 129, 97 is called "background".

The background property can be set on classes, ids or directly on the HTML element.

```
.background, #background, body{  
background: rgb(180, 120, 97) }
```

If only the background color should be changed can be used:

```
.background{ background-color: rgb(180,  
120, 97) }
```

This example shows the color as background, it is applied via the CSS property "background".

To optimize and compress your CSS code, you can use our [online CSS compressor and optimizer](#) based on csstidy. If you want to create a linear or radial gradient as background or border, check our [CSS Gradient Generator](#).



Hey! You found this booklet interesting? Support Converting Colors with the new Membership Option!

The pro membership hides all ads, plus gives you double the colors in the color bucket, and more awesome pro features!

**[Learn more, Memberships starting at \\$2.50/m!](#)**

**Follow me  
on Twitter!**

@ConvertingColor