

Converting Colors

`RYB(180, 138, 136)`

Have a look what the booklet for
RYB(180, 138, 136) contains.

RYB(180, 138, 136)	3
<i>Conversions</i>	4
<i>Details</i>	6
<i>Harmonies</i>	11
<i>Previews</i>	23
<i>Color Blindness Simulation</i>	26
<i>CSS Examples</i>	29

Color

R_YB(180, 138, 136)

Conversions

Conversions Part 1

Format	Color
Hex	B48A88
RGB	180, 138, 136
RGB Percent	71%, 54%, 53%
CMY	0.2941, 0.4592, 0.4667
CMYK	0.00, 0.23, 0.24, 0.29
HSL	3°, 23%, 62%
HSV	3°, 24%, 71%
XYZ	32.3423, 29.6329, 27.3076
YIQ	150.3300, 25.6740, 8.2820

Conversions

Conversions Part 2

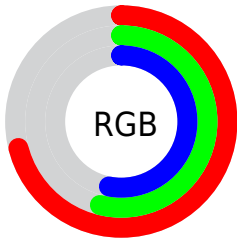
Format	Color
RYB	180, 138, 136
Decimal	11831944
CIELab	61.34, 15.73, 7.21
CIELCh	61, 17.301, 24.637
Yxy	29.6329, 0.3622, 0.3319
Android (android.graphics.Color)	4290022024 (0xFFB48A88)
YUV	150.3300, -7.0647, 26.0206
Hunter-Lab	54.4361, 10.7897, 8.3627

Details

The RYB color **180, 138, 136** is a light color, and the websafe version is hex **CC9999**. A complement of this color would be **136, 157, 180**, and the grayscale version is **150, 150, 150**.

A 20% lighter version of the original color is **236, 192, 189**, and **126, 88, 86** is the 20% darker color. If you saturate the color by 10%, you get **180, 121, 118**, and if you desaturate by 10%, it is **180, 155, 154**.

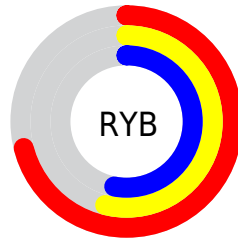
Distribution



Red (71%)

Green (54%)

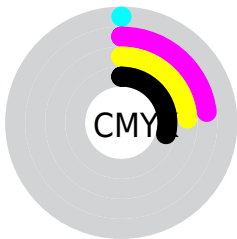
Blue (53%)



Red (71%)

Yellow (54%)

Blue (53%)

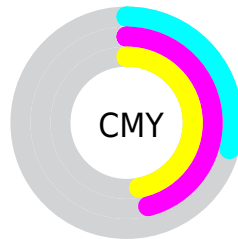


Cyan (0%)

Magenta (23%)

Yellow (24%)

Black (29%)



Cyan (29%)


Magenta (46%)

Yellow (47%)

Brightness & Saturation Gradients

These gradients show how the RYB color 180, 138, 136 changes by changing the brightness by 10 percent. The first figure shows a shift by +10% for each color and the second figure -10%.

Similar to the brightness gradients but the following saturation gradients show a change of the RYB color 180, 138, 136 by changing the saturation by 10% instead.


 180, 138, 136


255, 255, 255

 236, 192, 189


 255, 219, 217

 255, 249, 245

 180, 138, 136

 153, 112, 111

 126, 88, 86

 101, 64, 63

 76, 42, 41

 52, 21, 21


 32, 0, 0


 0, 0, 0


 180, 138, 136

 180, 121, 118


 180, 138, 136

 180, 155, 154


 180, 103, 100

 180, 172, 172

 180, 86, 82

 180, 185, 190

 180, 69, 64


 180, 194, 208

 180, 52, 46

 180, 202, 226

 180, 35, 28

 180, 211, 244

 180, 17, 10

 180, 218, 255

 180, 8, 0

Harmonies

Analogous

The Analogous color harmony consists of three colors that are next to each other on the color wheel.



177, 138, 151



180, 138, 136



175, 150, 124

Triad

The Triadic color harmony groups three colors that are evenly spaced from another and form a triangle on the color wheel.



180, 138, 136



129, 154, 155



127, 143, 178

Complementary

The Complementary color scheme is a pair of colors which are on the opposite of each other on the color wheel.



180, 138, 136



136, 157, 180

Split Complementary

Split-complementary colors differ from the complementary color scheme. The scheme consists of three colors, the original color and two neighbors of the complement color.



111, 136, 172



180, 138, 136



114, 139, 157

Square

The Square scheme is like the rectangle color scheme, but the four colors are evenly spaced on the color wheel.



180, 138, 136



120, 151, 125



107, 133, 160



147, 145, 176

Rectangle

The Rectangle color scheme consists of four colors that form a rectangle on the color wheel.



180, 138, 136



163, 167, 119



107, 133, 160



121, 141, 177

Sweetspot

The Sweet Spot groups the original color and five complimentary colors.



180, 138, 136



235, 219, 218



180, 136, 179



117, 108, 108



245, 245, 245



117, 117, 117

Same Dimension

The Same Dimension uses a secret algorithm to generate beautiful new colors.



180, 138, 136



235, 170, 167



176, 180, 136



89, 81, 80



153, 7, 0



26, 1, 0

Inverse Universe

The Inverse Universe completely reimagines the original color for something new.



136, 157, 180



167, 200, 235



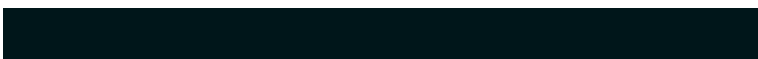
136, 150, 180



80, 85, 89



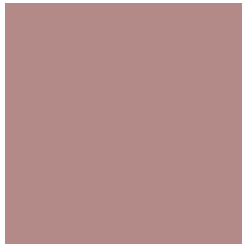
0, 75, 153



0, 12, 26

Previews

White Background



This preview shows how the RYB color 180, 138, 136 looks on a white background.

Color Contrast Check

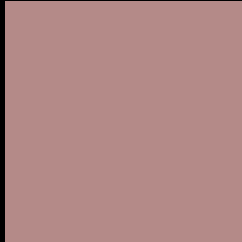
Large Text (above 18pt) WCAG AA ✓ Pass

Any Text WCAG AA × Fail

Large Text (above 18pt) WCAG AAA × Fail

Any Text WCAG AAA × Fail

Black Background



This preview shows how the RYB color 180, 138, 136 looks on a black background.

Color Contrast Check

Large Text (above 18pt) WCAG AA ✓ Pass

Any Text WCAG AA ✓ Pass

Large Text (above 18pt) WCAG AAA ✓ Pass

Any Text WCAG AAA × Fail

If you want to check with other color combinations, try the [Color Contrast Checker](#).

RYB 180, 138, 136 Background



This preview shows how black text looks on a background with the RYB color 180, 138, 136.



This preview shows how white text looks on a background with the RYB color 180, 138, 136.

Color Blindness Simulation

Color vision deficiency is a very complex topic, and I could not describe the different causes any better than Wikipedia does, so if you want to learn more, you should check out their [article about color blindness](#).

Dichromacy



Original Color
180, 138, 136

Protanopia
150, 153, 141

Deuteranopia
168, 146, 135



Tritanopia

181, 136, 147

Trichromacy



Original Color

180, 138, 136

Protanomaly

163, 145, 139

Deuteranomaly

172, 142, 135

Tritanomaly

181, 137, 143

Monochromacy



Original Color

180, 138, 136

Achromatopsia

150, 150, 150

Achromatomaly

161, 146, 145

CSS Examples

Text

The CSS property to change the color of the text to RYB 180, 138, 136 is called "color". The color property can be set on classes, ids or directly on the HTML element.

This example shows how text in the color rgb(180, 138, 136) looks like.

```
.text, #text, p{  
    color:rgb(180, 138, 136)  
}
```

If you want to add a text shadow in that color use the text-shadow property, you can generate a text shadow directly with our [CSS Text Shadow Generator](#).

Here you see how black text with a 4 pixel rgb(180, 138, 136) colored shadow looks like.

```
.shadow{ text-shadow: 4px 4px 2px rgb(180, 138, 136) }
```

Border

The CSS property to change the border of an element to RYB 180, 138, 136 is called "border". The border property can be set on classes, ids or directly on the HTML element.

This example shows the color as border, it can be applied via the CSS property "border" or "border-color".

```
.border, #border, table{ border:4px solid rgb(180, 138, 136) }
```

If only the border color should be changed use the property `border-color`.

```
.border{ border-color:rgb(180, 138, 136) }
```

If you want to add a box shadow in that color use:

Here you see how a box with a 4 pixel `rgb(180, 138, 136)` colored shadow looks like.

```
.boxshadow{ -moz-box-shadow:4px 4px 4px  
4px rgb(180, 138, 136); -webkit-box-  
shadow:4px 4px 4px 4px rgb(180, 138, 136);  
box-shadow:4px 4px 4px 4px rgb(180, 138,  
136) }
```

Background

The CSS property to change the background color of an element to RYB 180, 138, 136 is called "background". The background property can be set on classes, ids or directly on the HTML element.

```
.background, #background, body{  
background: rgb(180, 138, 136) }
```

If only the background color should be changed can be used:

```
.background{ background-color: rgb(180,  
138, 136) }
```

This example shows the color as background, it is applied via the CSS property "background".

To optimize and compress your CSS code, you can use our [online CSS compressor and optimizer](#) based on csstidy. If you want to create a linear or radial gradient as background or border, check our [CSS Gradient Generator](#).

Hey! You found this booklet interesting? Support Converting Colors with the new Membership Option!

The pro membership hides all ads, plus gives you double the colors in the color bucket, and more awesome pro features!

[Learn more, Memberships starting at \\$2.50/m!](#)

**Follow me
on Twitter!**

@ConvertingColor