

Converting Colors

`RYB(182, 125, 131)`

Have a look what the booklet for
RYB(182, 125, 131) contains.

RYB(182, 125, 131)	3
<i>Conversions</i>	4
<i>Details</i>	6
<i>Harmonies</i>	11
<i>Previews</i>	23
<i>Color Blindness Simulation</i>	26
<i>CSS Examples</i>	29

Color

R_YB(182, 125, 131)

Conversions

Conversions Part 1

Format	Color
Hex	B67D83
RGB	182, 125, 131
RGB Percent	71%, 49%, 51%
CMY	0.2863, 0.5098, 0.4863
CMYK	0.00, 0.31, 0.28, 0.29
HSL	354°, 28%, 60%
HSV	354°, 31%, 71%
XYZ	30.7218, 26.2510, 24.9205
YIQ	142.7270, 32.0460, 13.9500

Conversions

Conversions Part 2

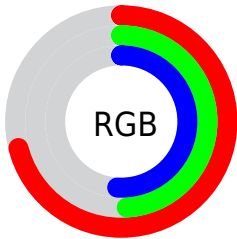
Format	Color
R_{YB}	182, 125, 131
Decimal	11959683
CIE _{Lab}	58.27, 22.99, 5.72
CIE _{LCh}	58, 23.693, 13.974
Yxy	26.2510, 0.3751, 0.3206
Android (android.graphics.Color)	4290149763 (0xFFB67D83)
YUV	142.7270, -5.7814, 34.4424
Hunter-Lab	51.2357, 17.3689, 7.0270

Details

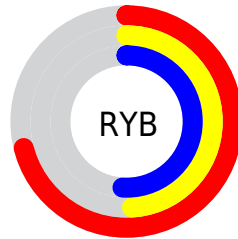
The RYB color **182, 125, 131** is a dark color, and the websafe version is hex **996666**. A complement of this color would be **125, 155, 182**, and the grayscale version is **143, 143, 143**.

A 20% lighter version of the original color is **239, 178, 184**, and **128, 75, 82** is the 20% darker color. If you saturate the color by 10%, you get **182, 107, 115**, and if you desaturate by 10%, it is **182, 143, 147**.

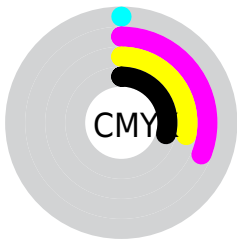
Distribution



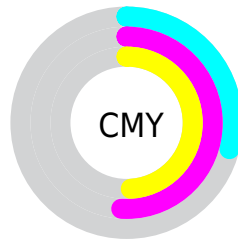
- Red (71%)
- Green (49%)
- Blue (51%)



- Red (71%)
- Yellow (49%)
- Blue (51%)



- Cyan (0%)
- Magenta (31%)
- Yellow (28%)
- Black (29%)




- Cyan (29%)
- Magenta (51%)
- Yellow (49%)


Brightness & Saturation Gradients

These gradients show how the RYB color 182, 125, 131 changes by changing the brightness by 10 percent. The first figure shows a shift by +10% for each color and the second figure -10%.

Similar to the brightness gradients but the following saturation gradients show a change of the RYB color 182, 125, 131 by changing the saturation by 10% instead.


 182, 125, 131


255, 255, 255

 239, 178, 184

 255, 206, 212

 255, 234, 240

 182, 125, 131

 154, 100, 106

 128, 75, 82

 102, 52, 59

 76, 29, 37


 52, 7, 16


 29, 0, 1

 0, 0, 0

 182, 125, 131

 182, 107, 115


 182, 125, 131

 182, 143, 147


 182, 89, 98

 182, 161, 164

 182, 70, 82

 182, 180, 180

 182, 52, 66

 182, 191, 198

 182, 34, 50

 182, 200, 216

 182, 16, 33

 182, 209, 234

 182, 0, 19

 182, 219, 252

 182, 219, 255

Harmonies

Analogous

The Analogous color harmony consists of three colors that are next to each other on the color wheel.



174, 126, 152



182, 125, 131



178, 135, 112

Triad

The Triadic color harmony groups three colors that are evenly spaced from another and form a triangle on the color wheel.



182, 125, 131



110, 147, 135



99, 128, 179

Complementary

The Complementary color scheme is a pair of colors which are on the opposite of each other on the color wheel.



182, 125, 131



125, 155, 182

Split Complementary

Split-complementary colors differ from the complementary color scheme. The scheme consists of three colors, the original color and two neighbors of the complement color.



79, 118, 168



182, 125, 131



98, 132, 151

Square

The Square scheme is like the rectangle color scheme, but the four colors are evenly spaced on the color wheel.



182, 125, 131



103, 145, 100



80, 117, 152



128, 137, 180

Rectangle

The Rectangle color scheme consists of four colors that form a rectangle on the color wheel.



182, 125, 131



170, 157, 103



80, 117, 152



90, 124, 177

Sweetspot

The Sweet Spot groups the original color and five complimentary colors.



182, 125, 131



237, 216, 218



175, 125, 182



120, 107, 108



247, 247, 247



120, 120, 120

Same Dimension

The Same Dimension uses a secret algorithm to generate beautiful new colors.



182, 125, 131



237, 147, 157



182, 161, 125



92, 83, 84



156, 0, 16



28, 0, 3

Inverse Universe

The Inverse Universe completely reimagines the original color for something new.



182, 125, 131



237, 147, 157



125, 147, 182



92, 83, 84



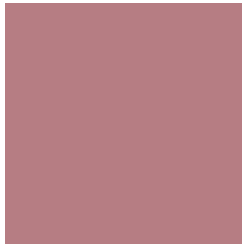
156, 0, 16



28, 0, 3

Previews

White Background



This preview shows how the RYB color 182, 125, 131 looks on a white background.

Color Contrast Check

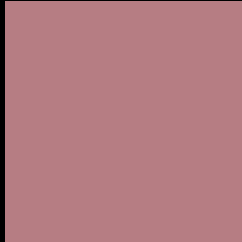
Large Text (above 18pt) WCAG AA ✓ Pass

Any Text WCAG AA × Fail

Large Text (above 18pt) WCAG AAA × Fail

Any Text WCAG AAA × Fail

Black Background



This preview shows how the RYB color 182, 125, 131 looks on a black background.

Color Contrast Check

Large Text (above 18pt) WCAG AA ✓ Pass

Any Text WCAG AA ✓ Pass

Large Text (above 18pt) WCAG AAA ✓ Pass

Any Text WCAG AAA × Fail

If you want to check with other color combinations, try the [Color Contrast Checker](#).

RYB 182, 125, 131 Background



This preview shows how black text looks on a background with the RYB color 182, 125, 131.



This preview shows how white text looks on a background with the RYB color 182, 125, 131.

Color Blindness Simulation

Color vision deficiency is a very complex topic, and I could not describe the different causes any better than Wikipedia does, so if you want to learn more, you should check out their [article about color blindness](#).

Dichromacy



Original Color
182, 125, 131

Protanopia
143, 140, 139

Deuteranopia
158, 137, 129



Tritanopia

182, 125, 134

Trichromacy



Original Color
182, 125, 131

Protanomaly
157, 135, 136

Deuteranomaly
167, 131, 130

Tritanomaly
182, 125, 133

Monochromacy



Original Color
182, 125, 131

Achromatopsia
143, 143, 143

Achromatomaly
157, 136, 139

CSS Examples

Text

The CSS property to change the color of the text to RYB 182, 125, 131 is called "color". The color property can be set on classes, ids or directly on the HTML element.

This example shows how text in the color `rgb(182, 125, 131)` looks like.

```
.text, #text, p{  
    color:rgb(182, 125, 131)  
}
```

If you want to add a text shadow in that color use the text-shadow property, you can generate a text shadow directly with our [CSS Text Shadow Generator](#).

Here you see how black text with a 4 pixel rgb(182, 125, 131) colored shadow looks like.

```
.shadow{ text-shadow: 4px 4px 2px rgb(182, 125, 131) }
```

Border

The CSS property to change the border of an element to RYB 182, 125, 131 is called "border". The border property can be set on classes, ids or directly on the HTML element.

This example shows the color as border, it can be applied via the CSS property "border" or "border-color".

```
.border, #border, table{ border:4px solid rgb(182, 125, 131) }
```

If only the border color should be changed use the property `border-color`.

```
.border{ border-color:rgb(182, 125, 131) }
```

If you want to add a box shadow in that color use:

Here you see how a box with a 4 pixel `rgb(182, 125, 131)` colored shadow looks like.

```
.boxshadow{ -moz-box-shadow:4px 4px 4px  
4px rgb(182, 125, 131); -webkit-box-  
shadow:4px 4px 4px 4px rgb(182, 125, 131);  
box-shadow:4px 4px 4px 4px rgb(182, 125,  
131) }
```

Background

The CSS property to change the background color of an element to RYB 182, 125, 131 is called "background". The background property can be set on classes, ids or directly on the HTML element.

```
.background, #background, body{  
background: rgb(182, 125, 131) }
```

If only the background color should be changed can be used:

```
.background{ background-color: rgb(182,  
125, 131) }
```

This example shows the color as background, it is applied via the CSS property "background".

To optimize and compress your CSS code, you can use our [online CSS compressor and optimizer](#) based on csstidy. If you want to create a linear or radial gradient as background or border, check our [CSS Gradient Generator](#).

Hey! You found this booklet interesting? Support Converting Colors with the new Membership Option!

The pro membership hides all ads, plus gives you double the colors in the color bucket, and more awesome pro features!

[Learn more, Memberships starting at \\$2.50/m!](#)

**Follow me
on Twitter!**

@ConvertingColor