

Converting Colors

`RYB(182, 132, 123)`

Have a look what the booklet for
RYB(182, 132, 123) contains.

RYB(182, 132, 123)	3
<i>Conversions</i>	4
<i>Details</i>	6
<i>Harmonies</i>	11
<i>Previews</i>	23
<i>Color Blindness Simulation</i>	26
<i>CSS Examples</i>	29

Color

`RYB(182, 132, 123)`

Conversions

Conversions Part 1

Format	Color
Hex	B6837B
RGB	182, 131, 123
RGB Percent	71%, 51%, 48%
CMY	0.2863, 0.4870, 0.5176
CMYK	0.00, 0.28, 0.32, 0.29
HSL	8°, 29%, 60%
HSV	8°, 32%, 71%
XYZ	30.9572, 27.5564, 22.4262
YIQ	145.3370, 32.9640, 8.3240

Conversions

Conversions Part 2

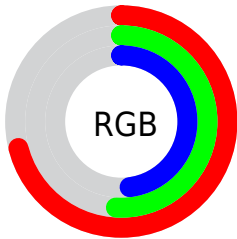
Format	Color
R_{YB}	182, 132, 123
Decimal	11961211
CIE _{Lab}	59.49, 18.65, 12.04
CIE _{LCh}	59, 22.192, 32.843
Yxy	27.5564, 0.3825, 0.3405
Android (android.graphics.Color)	4290151291 (0xFFB6837B)
YUV	145.3370, -11.0121, 32.1535
Hunter-Lab	52.4942, 13.4012, 11.4165

Details

The RYB color **182, 132, 123** is a dark color, and the websafe version is hex **CC9999**. A complement of this color would be **123, 150, 182**, and the grayscale version is **145, 145, 145**.

A 20% lighter version of the original color is **239, 185, 175**, and **128, 82, 74** is the 20% darker color. If you saturate the color by 10%, you get **182, 116, 105**, and if you desaturate by 10%, it is **182, 148, 141**.

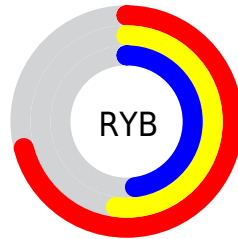
Distribution



Red (71%)

Green (51%)

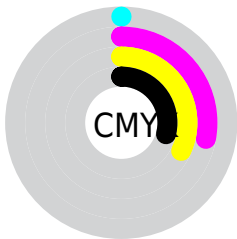
Blue (48%)



Red (71%)

Yellow (52%)

Blue (48%)

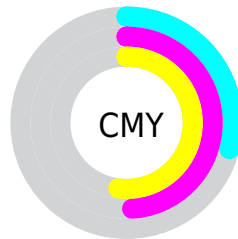


Cyan (0%)

Magenta (28%)

Yellow (32%)

Black (29%)



Cyan (29%)


Magenta (49%)

Yellow (52%)


Brightness & Saturation Gradients

These gradients show how the RYB color 182, 132, 123 changes by changing the brightness by 10 percent. The first figure shows a shift by +10% for each color and the second figure -10%.

Similar to the brightness gradients but the following saturation gradients show a change of the RYB color 182, 132, 123 by changing the saturation by 10% instead.


 182, 132, 123

255, 255, 255

 239, 185, 175


 255, 214, 203

 255, 245, 231

 182, 132, 123

 154, 106, 98

 128, 82, 74

 101, 59, 52

 76, 35, 31


 52, 16, 6


 30, 0, 1

 0, 0, 0


 182, 132, 123

 182, 116, 105


 182, 132, 123

 182, 148, 141

 182, 101, 87

 182, 162, 159

 182, 85, 68

 182, 178, 178

 182, 71, 50

 182, 188, 196

 182, 55, 32

 182, 197, 214

 182, 39, 14

 182, 205, 232

 182, 28, 0

 182, 214, 250

 182, 219, 255

Harmonies

Analogous

The Analogous color harmony consists of three colors that are next to each other on the color wheel.



181, 129, 142



182, 132, 123



173, 156, 109

Triad

The Triadic color harmony groups three colors that are evenly spaced from another and form a triangle on the color wheel.



182, 132, 123



112, 143, 153



122, 138, 182

Complementary

The Complementary color scheme is a pair of colors which are on the opposite of each other on the color wheel.



182, 132, 123



123, 150, 182

Split Complementary

Split-complementary colors differ from the complementary color scheme. The scheme consists of three colors, the original color and two neighbors of the complement color.



97, 129, 177



182, 132, 123



93, 126, 154

Square

The Square scheme is like the rectangle color scheme, but the four colors are evenly spaced on the color wheel.



182, 132, 123



110, 148, 123



86, 122, 164



149, 138, 176

Rectangle

The Rectangle color scheme consists of four colors that form a rectangle on the color wheel.



182, 132, 123



141, 162, 105



86, 122, 164



113, 135, 181

Sweetspot

The Sweet Spot groups the original color and five complimentary colors.



182, 132, 123



237, 218, 213



182, 123, 175



120, 107, 105



247, 247, 247



120, 120, 120

Same Dimension

The Same Dimension uses a secret algorithm to generate beautiful new colors.



182, 132, 123



237, 159, 145



161, 182, 123



92, 84, 83



156, 24, 0



28, 5, 0

Inverse Universe

The Inverse Universe completely reimagines the original color for something new.



123, 150, 182



145, 188, 237



123, 140, 182



83, 87, 92



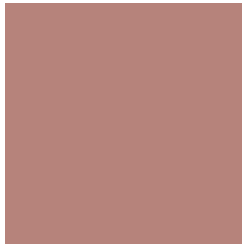
0, 72, 156



0, 13, 28

Previews

White Background



This preview shows how the RYB color 182, 132, 123 looks on a white background.

Color Contrast Check

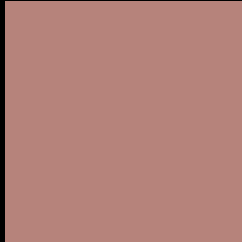
Large Text (above 18pt) WCAG AA ✓ Pass

Any Text WCAG AA ✗ Fail

Large Text (above 18pt) WCAG AAA ✗ Fail

Any Text WCAG AAA ✗ Fail

Black Background



This preview shows how the RYB color 182, 132, 123 looks on a black background.

Color Contrast Check

Large Text (above 18pt) WCAG AA ✓ Pass

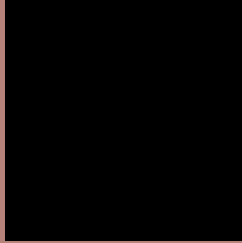
Any Text WCAG AA ✓ Pass

Large Text (above 18pt) WCAG AAA ✓ Pass

Any Text WCAG AAA × Fail

If you want to check with other color combinations, try the [Color Contrast Checker](#).

RYB 182, 132, 123 Background



This preview shows how black text looks on a background with the RYB color 182, 132, 123.



This preview shows how white text looks on a background with the RYB color 182, 132, 123.

Color Blindness Simulation

Color vision deficiency is a very complex topic, and I could not describe the different causes any better than Wikipedia does, so if you want to learn more, you should check out their [article about color blindness](#).


Dichromacy



Original Color
182, 132, 123

Protanopia
138, 149, 129

Deuteranopia
165, 147, 122



Tritanopia
184, 129, 138

Trichromacy



Original Color
182, 132, 123

Protanomaly
161, 146, 127

Deuteranomaly
171, 140, 122

Tritanomaly
183, 130, 133

Monochromacy



Original Color
182, 132, 123

Achromatopsia
145, 145, 145

Achromatomaly
158, 141, 137

CSS Examples

Text

The CSS property to change the color of the text to RYB 182, 132, 123 is called "color". The color property can be set on classes, ids or directly on the HTML element.

This example shows how text in the color rgb(182, 131, 123) looks like.

```
.text, #text, p{  
    color:rgb(182, 131, 123)  
}
```

If you want to add a text shadow in that color use the text-shadow property, you can generate a text shadow directly with our [CSS Text Shadow Generator](#).

Here you see how black text with a 4 pixel rgb(182, 131, 123) colored shadow looks like.

```
.shadow{ text-shadow: 4px 4px 2px rgb(182, 131, 123) }
```

Border

The CSS property to change the border of an element to RYB 182, 132, 123 is called "border". The border property can be set on classes, ids or directly on the HTML element.

This example shows the color as border, it can be applied via the CSS property "border" or "border-color".

```
.border, #border, table{ border:4px solid rgb(182, 131, 123) }
```

If only the border color should be changed use the property `border-color`.

```
.border{ border-color:rgb(182, 131, 123) }
```

If you want to add a box shadow in that color use:

Here you see how a box with a 4 pixel `rgb(182, 131, 123)` colored shadow looks like.

```
.boxshadow{ -moz-box-shadow:4px 4px 4px  
4px rgb(182, 131, 123); -webkit-box-  
shadow:4px 4px 4px 4px rgb(182, 131, 123);  
box-shadow:4px 4px 4px 4px rgb(182, 131,  
123) }
```

Background

The CSS property to change the background color of an element to RYB 182, 132, 123 is called "background". The background property can be set on classes, ids or directly on the HTML element.

```
.background, #background, body{  
background: rgb(182, 131, 123) }
```

If only the background color should be changed can be used:

```
.background{ background-color: rgb(182,  
131, 123) }
```

This example shows the color as background, it is applied via the CSS property "background".

To optimize and compress your CSS code, you can use our [online CSS compressor and optimizer](#) based on csstidy. If you want to create a linear or radial gradient as background or border, check our [CSS Gradient Generator](#).

Hey! You found this booklet interesting? Support Converting Colors with the new Membership Option!

The pro membership hides all ads, plus gives you double the colors in the color bucket, and more awesome pro features!

[Learn more, Memberships starting at \\$2.50/m!](#)

**Follow me
on Twitter!**

@ConvertingColor