

Converting Colors

`RYB(182, 151, 154)`

Have a look what the booklet for
RYB(182, 151, 154) contains.

RYB(182, 151, 154)	3
<i>Conversions</i>	4
<i>Details</i>	6
<i>Harmonies</i>	11
<i>Previews</i>	23
<i>Color Blindness Simulation</i>	26
<i>CSS Examples</i>	29

Color

R_YB(182, 151, 154)

Conversions

Conversions Part 1

Format	Color
Hex	B6979A
RGB	182, 151, 154
RGB Percent	71%, 59%, 60%
CMY	0.2863, 0.4078, 0.3961
CMYK	0.00, 0.17, 0.15, 0.29
HSL	354°, 18%, 65%
HSV	354°, 17%, 71%
XYZ	36.1907, 34.4114, 35.3065
YIQ	160.6110, 17.5130, 7.5050

Conversions

Conversions Part 2

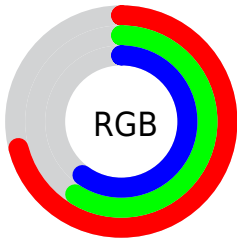
Format	Color
RYB	182, 151, 154
Decimal	11966362
CIELab	65.29, 12.02, 2.75
CIELCh	65, 12.333, 12.879
Yxy	34.4114, 0.3417, 0.3249
Android (android.graphics.Color)	4290156442 (0xFFB6979A)
YUV	160.6110, -3.2592, 18.7582
Hunter-Lab	58.6612, 7.4675, 5.3780

Details

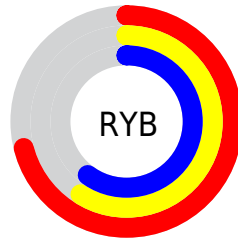
The RYB color **182, 151, 154** is a light color, and the websafe version is hex **CC9999**. A complement of this color would be **151, 167, 182**, and the grayscale version is **161, 161, 161**.

A 20% lighter version of the original color is **238, 205, 208**, and **129, 100, 103** is the 20% darker color. If you saturate the color by 10%, you get **182, 133, 138**, and if you desaturate by 10%, it is **182, 169, 170**.

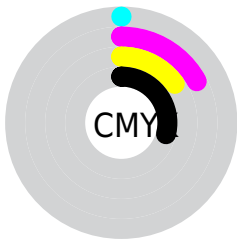
Distribution



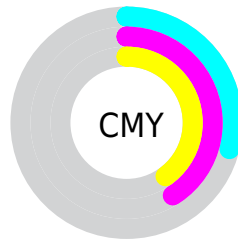
- Red (71%)
- Green (59%)
- Blue (60%)



- Red (71%)
- Yellow (59%)
- Blue (60%)



- Cyan (0%)
- Magenta (17%)
- Yellow (15%)
- Black (29%)



- Cyan (29%)
- Magenta (41%)
- Yellow (40%)

Brightness & Saturation Gradients

These gradients show how the RYB color 182, 151, 154 changes by changing the brightness by 10 percent. The first figure shows a shift by +10% for each color and the second figure -10%.

Similar to the brightness gradients but the following saturation gradients show a change of the RYB color 182, 151, 154 by changing the saturation by 10% instead.

 182, 151, 154

255, 255, 255

 238, 205, 208

 255, 233, 237

 182, 151, 154


 155, 125, 128

 129, 100, 103


 103, 76, 79

 79, 53, 56


 55, 32, 35

 34, 10, 13

 0, 0, 0

 182, 151, 154

 182, 133, 138


 182, 151, 154

 182, 169, 170

 182, 115, 121

 182, 185, 187

 182, 96, 105

 182, 195, 206

 182, 78, 88

 182, 204, 224

 182, 60, 72

 182, 214, 242

 182, 42, 55

 182, 219, 255

 182, 24, 39

 182, 219, 255

 182, 5, 22

 182, 0, 18

Harmonies

Analogous

The Analogous color harmony consists of three colors that are next to each other on the color wheel.



177, 152, 165



182, 151, 154



181, 156, 144

Triad

The Triadic color harmony groups three colors that are evenly spaced from another and form a triangle on the color wheel.



182, 151, 154



142, 162, 154



140, 154, 179

Complementary

The Complementary color scheme is a pair of colors which are on the opposite of each other on the color wheel.



182, 151, 154



151, 167, 182

Split Complementary

Split-complementary colors differ from the complementary color scheme. The scheme consists of three colors, the original color and two neighbors of the complement color.



131, 149, 173



182, 151, 154



138, 156, 165

Square

The Square scheme is like the rectangle color scheme, but the four colors are evenly spaced on the color wheel.



182, 151, 154



140, 162, 137



131, 149, 165



153, 157, 180

Rectangle

The Rectangle color scheme consists of four colors that form a rectangle on the color wheel.



182, 151, 154



176, 164, 139



131, 149, 165



136, 152, 178

Sweetspot

The Sweet Spot groups the original color and five complimentary colors.



182, 151, 154



237, 225, 226



179, 151, 182



120, 113, 113



247, 247, 247



120, 120, 120

Same Dimension

The Same Dimension uses a secret algorithm to generate beautiful new colors.



182, 151, 154



237, 190, 194



182, 171, 151



92, 83, 84



156, 0, 15



28, 0, 3

Inverse Universe

The Inverse Universe completely reimagines the original color for something new.



182, 151, 154



237, 190, 194



151, 163, 182



92, 83, 84



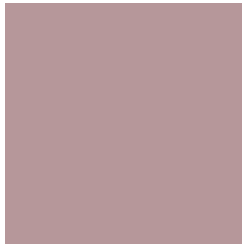
156, 0, 15



28, 0, 3

Previews

White Background



This preview shows how the RYB color 182, 151, 154 looks on a white background.

Color Contrast Check

Large Text (above 18pt) WCAG AA × Fail

Any Text WCAG AA × Fail

Large Text (above 18pt) WCAG AAA × Fail

Any Text WCAG AAA × Fail

Black Background



This preview shows how the RYB color 182, 151, 154 looks on a black background.

Color Contrast Check

Large Text (above 18pt) WCAG AA ✓ Pass

Any Text WCAG AA ✓ Pass

Large Text (above 18pt) WCAG AAA ✓ Pass

Any Text WCAG AAA ✓ Pass

If you want to check with other color combinations, try the [Color Contrast Checker](#).

RYB 182, 151, 154 Background



This preview shows how black text looks on a background with the RYB color 182, 151, 154.



This preview shows how white text looks on a background with the RYB color 182, 151, 154.

Color Blindness Simulation

Color vision deficiency is a very complex topic, and I could not describe the different causes any better than Wikipedia does, so if you want to learn more, you should check out their [article about color blindness](#).

Dichromacy



Original Color
182, 151, 154

Protanopia
162, 158, 158

Deuteranopia
176, 153, 154



Tritanopia
183, 150, 161

Trichromacy



Original Color

182, 151, 154

Protanomaly

169, 155, 157

Deuteranomaly

178, 152, 154

Tritanomaly

183, 150, 158

Monochromacy



Original Color

182, 151, 154

Achromatopsia

161, 161, 161

Achromatomaly

169, 157, 158

CSS Examples

Text

The CSS property to change the color of the text to RYB 182, 151, 154 is called "color". The color property can be set on classes, ids or directly on the HTML element.

This example shows how text in the color rgb(182, 151, 154) looks like.

```
.text, #text, p{  
    color:rgb(182, 151, 154)  
}
```

If you want to add a text shadow in that color use the text-shadow property, you can generate a text shadow directly with our [CSS Text Shadow Generator](#).

Here you see how black text with a 4 pixel rgb(182, 151, 154) colored shadow looks like.

```
.shadow{ text-shadow: 4px 4px 2px rgb(182, 151, 154) }
```

Border

The CSS property to change the border of an element to RYB 182, 151, 154 is called "border". The border property can be set on classes, ids or directly on the HTML element.

This example shows the color as border, it can be applied via the CSS property "border" or "border-color".

```
.border, #border, table{ border:4px solid rgb(182, 151, 154) }
```

If only the border color should be changed use the property `border-color`.

```
.border{ border-color:rgb(182, 151, 154) }
```

If you want to add a box shadow in that color use:

Here you see how a box with a 4 pixel `rgb(182, 151, 154)` colored shadow looks like.

```
.boxshadow{ -moz-box-shadow:4px 4px 4px  
4px rgb(182, 151, 154); -webkit-box-  
shadow:4px 4px 4px 4px rgb(182, 151, 154);  
box-shadow:4px 4px 4px 4px rgb(182, 151,  
154) }
```

Background

The CSS property to change the background color of an element to RYB 182, 151, 154 is called "background". The background property can be set on classes, ids or directly on the HTML element.

```
.background, #background, body{  
background: rgb(182, 151, 154) }
```

If only the background color should be changed can be used:

```
.background{ background-color: rgb(182,  
151, 154) }
```

This example shows the color as background, it is applied via the CSS property "background".

To optimize and compress your CSS code, you can use our [online CSS compressor and optimizer](#) based on csstidy. If you want to create a linear or radial gradient as background or border, check our [CSS Gradient Generator](#).

Hey! You found this booklet interesting? Support Converting Colors with the new Membership Option!

The pro membership hides all ads, plus gives you double the colors in the color bucket, and more awesome pro features!

[Learn more, Memberships starting at \\$2.50/m!](#)

**Follow me
on Twitter!**

@ConvertingColor