

Converting Colors

`RYB(182, 152, 158)`

Have a look what the booklet for
RYB(182, 152, 158) contains.

RYB(182, 152, 158)	3
<i>Conversions</i>	4
<i>Details</i>	6
<i>Harmonies</i>	11
<i>Previews</i>	23
<i>Color Blindness Simulation</i>	26
<i>CSS Examples</i>	29

Color

R_YB(182, 152, 158)

Conversions

Conversions Part 1

Format	Color
Hex	B6989E
RGB	182, 152, 158
RGB Percent	71%, 60%, 62%
CMY	0.2863, 0.4039, 0.3804
CMYK	0.00, 0.16, 0.13, 0.29
HSL	348°, 17%, 65%
HSV	348°, 16%, 71%
XYZ	36.6912, 34.8702, 37.1445
YIQ	161.6540, 15.9540, 8.2260

Conversions

Conversions Part 2

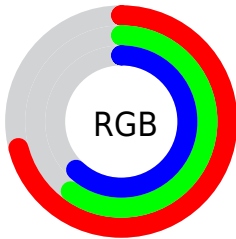
Format	Color
RYB	182, 152, 158
Decimal	11966622
CIELab	65.65, 12.14, 1.02
CIELCh	66, 12.179, 4.827
Yxy	34.8702, 0.3375, 0.3208
Android (android.graphics.Color)	4290156702 (0xFFB6989E)
YUV	161.6540, -1.8014, 17.8434
Hunter-Lab	59.0510, 7.5714, 4.0408

Details

The RYB color **182, 152, 158** is a light color, and the websafe version is hex **CC9999**. A complement of this color would be **152, 169, 182**, and the grayscale version is **162, 162, 162**.

A 20% lighter version of the original color is **238, 206, 213**, and **129, 101, 107** is the 20% darker color. If you saturate the color by 10%, you get **182, 134, 143**, and if you desaturate by 10%, it is **182, 170, 173**.

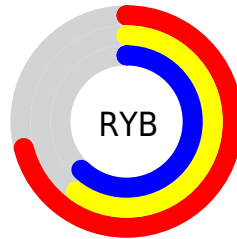
Distribution



Red (71%)

Green (60%)

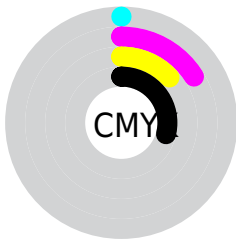
Blue (62%)



Red (71%)

Yellow (60%)

Blue (62%)

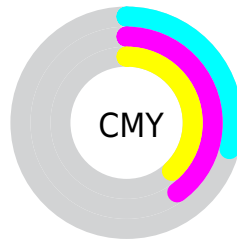


Cyan (0%)

Magenta (16%)

Yellow (13%)

Black (29%)



Cyan (29%)

Magenta (40%)

Yellow (38%)

Brightness & Saturation Gradients

These gradients show how the RYB color 182, 152, 158 changes by changing the brightness by 10 percent. The first figure shows a shift by +10% for each color and the second figure -10%.

Similar to the brightness gradients but the following saturation gradients show a change of the RYB color 182, 152, 158 by changing the saturation by 10% instead.

 182, 152, 158

255, 255, 255

 238, 206, 213

 255, 235, 241

 182, 152, 158


 155, 126, 132

 129, 101, 107


 103, 77, 83

 79, 54, 60


 56, 32, 38

 34, 11, 17

 0, 0, 0

 182, 152, 158

 182, 134, 143

 182, 152, 158

 182, 170, 173

■ 182, 116, 129

■ 182, 185, 188

■ 182, 97, 114

■ 182, 196, 207

■ 182, 79, 100

■ 182, 206, 225

■ 182, 61, 85

■ 182, 216, 243

■ 182, 43, 71

■ 182, 221, 255

■ 182, 25, 56

■ 182, 219, 255

■ 182, 6, 42

■ 182, 0, 36

Harmonies

Analogous

The Analogous color harmony consists of three colors that are next to each other on the color wheel.



175, 153, 169



182, 152, 158



182, 154, 147

Triad

The Triadic color harmony groups three colors that are evenly spaced from another and form a triangle on the color wheel.



182, 152, 158



141, 163, 150



138, 154, 179

Complementary

The Complementary color scheme is a pair of colors which are on the opposite of each other on the color wheel.



182, 152, 158



152, 169, 182

Split Complementary

Split-complementary colors differ from the complementary color scheme. The scheme consists of three colors, the original color and two neighbors of the complement color.



132, 150, 171



182, 152, 158



142, 159, 165

Square

The Square scheme is like the rectangle color scheme, but the four colors are evenly spaced on the color wheel.



182, 152, 158



149, 167, 138



134, 151, 166



150, 158, 181

Rectangle

The Rectangle color scheme consists of four colors that form a rectangle on the color wheel.



182, 152, 158



179, 162, 142



134, 151, 166



135, 152, 177

Sweetspot

The Sweet Spot groups the original color and five complimentary colors.



182, 152, 158



237, 225, 228



176, 152, 182



120, 113, 114



247, 247, 247



120, 120, 120

Same Dimension

The Same Dimension uses a secret algorithm to generate beautiful new colors.



182, 152, 158



237, 190, 199



182, 165, 152



92, 83, 84



156, 0, 31



28, 0, 6

Inverse Universe

The Inverse Universe completely reimagines the original color for something new.



182, 152, 158



237, 190, 199



152, 164, 182



92, 83, 84



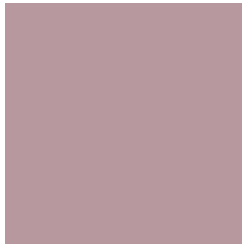
156, 0, 31



28, 0, 6

Previews

White Background



This preview shows how the RYB color 182, 152, 158 looks on a white background.

Color Contrast Check

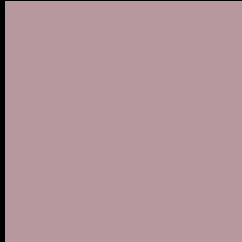
Large Text (above 18pt) WCAG AA × Fail

Any Text WCAG AA × Fail

Large Text (above 18pt) WCAG AAA × Fail

Any Text WCAG AAA × Fail

Black Background



This preview shows how the RYB color 182, 152, 158 looks on a black background.

Color Contrast Check

Large Text (above 18pt) WCAG AA ✓ Pass

Any Text WCAG AA ✓ Pass

Large Text (above 18pt) WCAG AAA ✓ Pass

Any Text WCAG AAA ✓ Pass

If you want to check with other color combinations, try the [Color Contrast Checker](#).

RYB 182, 152, 158 Background



This preview shows how black text looks on a background with the RYB color 182, 152, 158.



This preview shows how white text looks on a background with the RYB color 182, 152, 158.

Color Blindness Simulation

Color vision deficiency is a very complex topic, and I could not describe the different causes any better than Wikipedia does, so if you want to learn more, you should check out their [article about color blindness](#).


Dichromacy



Original Color
182, 152, 158

Protanopia
162, 159, 162

Deuteranopia
176, 154, 158



Tritanopia
183, 151, 163

Trichromacy



Original Color

182, 152, 158

Protanomaly

169, 156, 161

Deuteranomaly

178, 153, 158

Tritanomaly

183, 151, 161

Monochromacy



Original Color

182, 152, 158

Achromatopsia

162, 162, 162

Achromatomaly

169, 158, 161

CSS Examples

Text

The CSS property to change the color of the text to RYB 182, 152, 158 is called "color". The color property can be set on classes, ids or directly on the HTML element.

This example shows how text in the color rgb(182, 152, 158) looks like.

```
.text, #text, p{  
    color:rgb(182, 152, 158)  
}
```

If you want to add a text shadow in that color use the text-shadow property, you can generate a text shadow directly with our [CSS Text Shadow Generator](#).

Here you see how black text with a 4 pixel rgb(182, 152, 158) colored shadow looks like.

```
.shadow{ text-shadow: 4px 4px 2px rgb(182, 152, 158) }
```

Border

The CSS property to change the border of an element to RYB 182, 152, 158 is called "border". The border property can be set on classes, ids or directly on the HTML element.

This example shows the color as border, it can be applied via the CSS property "border" or "border-color".

```
.border, #border, table{ border:4px solid rgb(182, 152, 158) }
```

If only the border color should be changed use the property `border-color`.

```
.border{ border-color:rgb(182, 152, 158) }
```

If you want to add a box shadow in that color use:

Here you see how a box with a 4 pixel `rgb(182, 152, 158)` colored shadow looks like.

```
.boxshadow{ -moz-box-shadow:4px 4px 4px  
4px rgb(182, 152, 158); -webkit-box-  
shadow:4px 4px 4px 4px rgb(182, 152, 158);  
box-shadow:4px 4px 4px 4px rgb(182, 152,  
158) }
```

Background

The CSS property to change the background color of an element to RYB 182, 152, 158 is called "background". The background property can be set on classes, ids or directly on the HTML element.

```
.background, #background, body{  
background: rgb(182, 152, 158) }
```

If only the background color should be changed can be used:

```
.background{ background-color: rgb(182,  
152, 158) }
```

This example shows the color as background, it is applied via the CSS property "background".

To optimize and compress your CSS code, you can use our [online CSS compressor and optimizer](#) based on csstidy. If you want to create a linear or radial gradient as background or border, check our [CSS Gradient Generator](#).

Hey! You found this booklet interesting? Support Converting Colors with the new Membership Option!

The pro membership hides all ads, plus gives you double the colors in the color bucket, and more awesome pro features!

[Learn more, Memberships starting at \\$2.50/m!](#)

**Follow me
on Twitter!**

@ConvertingColor