

Converting Colors

`RYB(182, 168, 112)`

Have a look what the booklet for
RYB(182, 168, 112) contains.

RYB(182, 168, 112)	3
<i>Conversions</i>	4
<i>Details</i>	6
<i>Harmonies</i>	11
<i>Previews</i>	23
<i>Color Blindness Simulation</i>	26
<i>CSS Examples</i>	29

Color

$\text{RYB}(182, 168, 112)$

Conversions

Conversions Part 1

Format	Color
Hex	B68F70
RGB	182, 143, 112
RGB Percent	71%, 56%, 44%
CMY	0.2863, 0.4388, 0.5608
CMYK	0.00, 0.21, 0.38, 0.29
HSL	27°, 32%, 58%
HSV	27°, 38%, 71%
XYZ	32.0552, 30.7932, 19.5834
YIQ	151.1270, 33.1950, -1.3730

Conversions

Conversions Part 2

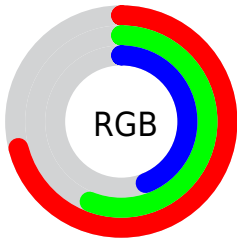
Format	Color
RYB	182, 168, 112
Decimal	11964272
CIELab	62.33, 10.39, 22.16
CIElCh	62, 24.478, 64.872
Yxy	30.7932, 0.3889, 0.3736
Android (android.graphics.Color)	4290154352 (0xFFB68F70)
YUV	151.1270, -19.2896, 27.0756
Hunter-Lab	55.4917, 6.0015, 17.9203

Details

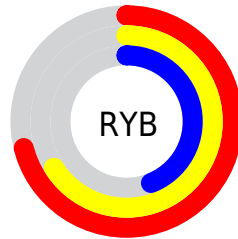
The RYB color **182, 168, 112** is a dark color, and the websafe version is hex **CC9966**. A complement of this color would be **112, 137, 182**, and the grayscale version is **151, 151, 151**.

A 20% lighter version of the original color is **239, 223, 164**, and **128, 117, 64** is the 20% darker color. If you saturate the color by 10%, you get **182, 164, 94**, and if you desaturate by 10%, it is **182, 171, 130**.

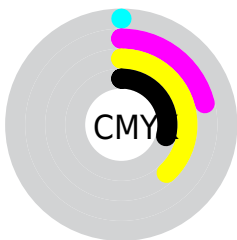
Distribution



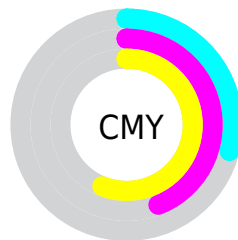
- Red (71%)
- Green (56%)
- Blue (44%)



- Red (71%)
- Yellow (66%)
- Blue (44%)



- Cyan (0%)
- Magenta (21%)
- Yellow (38%)
- Black (29%)




- Cyan (29%)
- Magenta (44%)
- Yellow (56%)

Brightness & Saturation Gradients

These gradients show how the RYB color 182, 168, 112 changes by changing the brightness by 10 percent. The first figure shows a shift by +10% for each color and the second figure -10%.

Similar to the brightness gradients but the following saturation gradients show a change of the RYB color 182, 168, 112 by changing the saturation by 10% instead.

 182, 168, 112


255, 255, 255

 239, 223, 164

 247, 255, 191


 221, 255, 219

 248, 255, 248

 182, 168, 112

 154, 141, 87

 128, 117, 64

 101, 94, 41

 76, 72, 20

 52, 52, 0

 29, 0, 0

 0, 0, 0

 182, 168, 112

 182, 164, 94

 182, 168, 112

 182, 171, 130

■ 182, 160, 76

■ 182, 175, 148

■ 182, 158, 57

■ 182, 177, 167

■ 182, 155, 39

■ 182, 183, 185

■ 182, 151, 21

■ 182, 190, 203

■ 182, 144, 3

■ 182, 196, 221

■ 182, 146, 0

■ 182, 202, 239

■ 182, 209, 255

■ 182, 212, 255

Harmonies

Analogous

The Analogous color harmony consists of three colors that are next to each other on the color wheel.



193, 139, 127



182, 168, 112



124, 163, 107

Triad

The Triadic color harmony groups three colors that are evenly spaced from another and form a triangle on the color wheel.



182, 168, 112



93, 130, 163



159, 144, 186

Complementary

The Complementary color scheme is a pair of colors which are on the opposite of each other on the color wheel.



182, 168, 112



112, 137, 182

Split Complementary

Split-complementary colors differ from the complementary color scheme. The scheme consists of three colors, the original color and two neighbors of the complement color.



128, 145, 194



182, 168, 112



85, 126, 175

Square

The Square scheme is like the rectangle color scheme, but the four colors are evenly spaced on the color wheel.



182, 168, 112



114, 148, 161



100, 135, 189



182, 137, 170

Rectangle

The Rectangle color scheme consists of four colors that form a rectangle on the color wheel.



182, 168, 112



111, 155, 119



100, 135, 189



149, 146, 190

Sweetspot

The Sweet Spot groups the original color and five complimentary colors.



182, 168, 112



237, 230, 209



182, 112, 152



120, 118, 103



247, 247, 247



120, 120, 120

Same Dimension

The Same Dimension uses a secret algorithm to generate beautiful new colors.



182, 168, 112



237, 217, 128



117, 182, 112



92, 90, 83



156, 124, 0



28, 21, 0

Inverse Universe

The Inverse Universe completely reimagines the original color for something new.



112, 137, 182



128, 167, 237



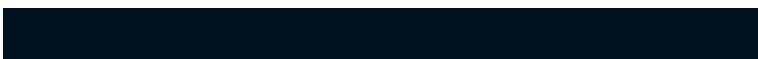
112, 117, 182



83, 86, 92



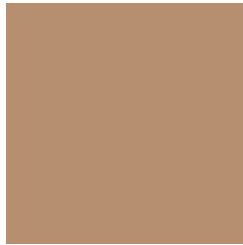
0, 55, 156



0, 10, 28

Previews

White Background



This preview shows how the RYB color 182, 168, 112 looks on a white background.

Color Contrast Check

Large Text (above 18pt) WCAG AA × Fail

Any Text WCAG AA × Fail

Large Text (above 18pt) WCAG AAA × Fail

Any Text WCAG AAA × Fail

Black Background



This preview shows how the RYB color 182, 168, 112 looks on a black background.

Color Contrast Check

Large Text (above 18pt) WCAG AA ✓ Pass

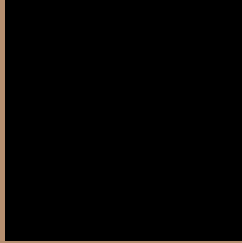
Any Text WCAG AA ✓ Pass

Large Text (above 18pt) WCAG AAA ✓ Pass

Any Text WCAG AAA ✓ Pass

If you want to check with other color combinations, try the [Color Contrast Checker](#).

R Y B 182, 168, 112 Background



This preview shows how black text looks on a background with the RYB color 182, 168, 112.



This preview shows how white text looks on a background with the RYB color 182, 168, 112.

Color Blindness Simulation

Color vision deficiency is a very complex topic, and I could not describe the different causes any better than Wikipedia does, so if you want to learn more, you should check out their [article about color blindness](#).

Dichromacy



Original Color
182, 168, 112

Protanopia
128, 161, 115

Deuteranopia
178, 178, 112



Tritanopia
186, 138, 149

Trichromacy



Original Color

182, 168, 112

Protanomaly

148, 169, 114

Deuteranomaly

179, 173, 112

Tritanomaly

185, 140, 136

Monochromacy



Original Color

182, 168, 112

Achromatopsia

151, 151, 151

Achromatomaly

162, 157, 137

CSS Examples

Text

The CSS property to change the color of the text to RYB 182, 168, 112 is called "color". The color property can be set on classes, ids or directly on the HTML element.

This example shows how text in the color `rgb(182, 143, 112)` looks like.

```
.text, #text, p{  
    color:rgb(182, 143, 112)  
}
```

If you want to add a text shadow in that color use the text-shadow property, you can generate a text shadow directly with our [CSS Text Shadow Generator](#).

Here you see how black text with a 4 pixel rgb(182, 143, 112) colored shadow looks like.

```
.shadow{ text-shadow: 4px 4px 2px rgb(182, 143, 112) }
```

Border

The CSS property to change the border of an element to RYB 182, 168, 112 is called "border". The border property can be set on classes, ids or directly on the HTML element.

This example shows the color as border, it can be applied via the CSS property "border" or "border-color".

```
.border, #border, table{ border:4px solid rgb(182, 143, 112) }
```

If only the border color should be changed use the property `border-color`.

```
.border{ border-color:rgb(182, 143, 112) }
```

If you want to add a box shadow in that color use:

Here you see how a box with a 4 pixel `rgb(182, 143, 112)` colored shadow looks like.

```
.boxshadow{ -moz-box-shadow:4px 4px 4px  
4px rgb(182, 143, 112); -webkit-box-  
shadow:4px 4px 4px 4px rgb(182, 143, 112);  
box-shadow:4px 4px 4px 4px rgb(182, 143,  
112) }
```

Background

The CSS property to change the background color of an element to RYB 182, 168, 112 is called "background". The background property can be set on classes, ids or directly on the HTML element.

```
.background, #background, body{  
background: rgb(182, 143, 112) }
```

If only the background color should be changed can be used:

```
.background{ background-color: rgb(182,  
143, 112) }
```

This example shows the color as background, it is applied via the CSS property "background".

To optimize and compress your CSS code, you can use our [online CSS compressor and optimizer](#) based on csstidy. If you want to create a linear or radial gradient as background or border, check our [CSS Gradient Generator](#).

Hey! You found this booklet interesting? Support Converting Colors with the new Membership Option!

The pro membership hides all ads, plus gives you double the colors in the color bucket, and more awesome pro features!

[Learn more, Memberships starting at \\$2.50/m!](#)

**Follow me
on Twitter!**

@ConvertingColor