

Converting Colors

`RYB(183, 131, 104)`

Have a look what the booklet for
RYB(183, 131, 104) contains.

RYB(183, 131, 104)	3
<i>Conversions</i>	4
<i>Details</i>	6
<i>Harmonies</i>	11
<i>Previews</i>	23
<i>Color Blindness Simulation</i>	26
<i>CSS Examples</i>	29

Color

R_YB(183, 131, 104)

Conversions

Conversions Part 1

Format	Color
Hex	B77C68
RGB	183, 124, 104
RGB Percent	72%, 49%, 41%
CMY	0.2824, 0.5132, 0.5922
CMYK	0.00, 0.32, 0.43, 0.28
HSL	15°, 35%, 56%
HSV	15°, 43%, 72%
XYZ	29.2502, 25.5128, 16.4795
YIQ	139.3610, 41.5840, 6.2880

Conversions

Conversions Part 2

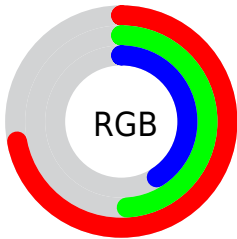
Format	Color
R _Y B	183, 131, 104
Decimal	12024936
CIE Lab	57.57, 20.45, 20.26
CIE LCh	58, 28.791, 44.734
Yxy	25.5128, 0.4106, 0.3581
Android (android.graphics.Color)	4290215016 (0xFFB77C68)
YUV	139.3610, -17.4330, 38.2714
Hunter-Lab	50.5102, 14.9754, 16.0131

Details

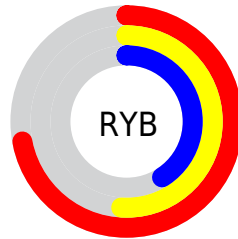
The RYB color **183, 131, 104** is a dark color, and the websafe version is hex **996666**. A complement of this color would be **104, 138, 183**, and the grayscale version is **140, 140, 140**.

A 20% lighter version of the original color is **241, 185, 155**, and **128, 81, 57** is the 20% darker color. If you saturate the color by 10%, you get **183, 118, 86**, and if you desaturate by 10%, it is **183, 144, 122**.

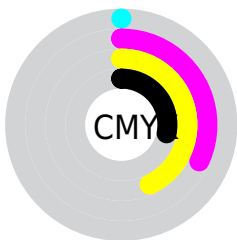
Distribution



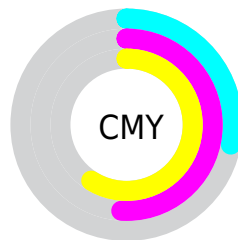
- Red (72%)
- Green (49%)
- Blue (41%)



- Red (72%)
- Yellow (51%)
- Blue (41%)



- Cyan (0%)
- Magenta (32%)
- Yellow (43%)
- Black (28%)



- Cyan (28%)
- Magenta (51%)
- Yellow (59%)


Brightness & Saturation Gradients

These gradients show how the RYB color 183, 131, 104 changes by changing the brightness by 10 percent. The first figure shows a shift by +10% for each color and the second figure -10%.

Similar to the brightness gradients but the following saturation gradients show a change of the RYB color 183, 131, 104 by changing the saturation by 10% instead.

 183, 131, 104

255, 255, 255


 241, 185, 155

 255, 216, 182


 253, 255, 210

 238, 255, 238

 183, 131, 104

 155, 105, 80

 128, 81, 57

 101, 58, 35

 75, 34, 14

 50, 10, 0

 22, 0, 0

 0, 0, 0

 183, 131, 104

 183, 118, 86

 183, 131, 104

 183, 144, 122

183, 107, 67

183, 154, 141

183, 95, 49

183, 167, 159

183, 83, 31

183, 180, 177

183, 71, 12

183, 188, 195

183, 63, 0

183, 196, 214

183, 204, 232

183, 212, 250

183, 217, 255

Harmonies

Analogous

The Analogous color harmony consists of three colors that are next to each other on the color wheel.



188, 119, 127



183, 131, 104



154, 167, 90

Triad

The Triadic color harmony groups three colors that are evenly spaced from another and form a triangle on the color wheel.



183, 131, 104



84, 126, 151



123, 134, 187

Complementary

The Complementary color scheme is a pair of colors which are on the opposite of each other on the color wheel.



183, 131, 104



104, 138, 183

Split Complementary

Split-complementary colors differ from the complementary color scheme. The scheme consists of three colors, the original color and two neighbors of the complement color.



84, 122, 186



183, 131, 104



57, 105, 152

Square

The Square scheme is like the rectangle color scheme, but the four colors are evenly spaced on the color wheel.



183, 131, 104



102, 147, 134



53, 107, 173



157, 127, 174

Rectangle

The Rectangle color scheme consists of four colors that form a rectangle on the color wheel.



183, 131, 104



106, 152, 88



53, 107, 173



110, 131, 188

Sweetspot

The Sweet Spot groups the original color and five complimentary colors.



183, 131, 104



237, 217, 206



183, 104, 163



120, 108, 101



247, 247, 247



120, 120, 120

Same Dimension

The Same Dimension uses a secret algorithm to generate beautiful new colors.



183, 131, 104



237, 155, 114



131, 183, 104



92, 86, 83



156, 54, 0



28, 9, 0

Inverse Universe

The Inverse Universe completely reimagines the original color for something new.



104, 138, 183



114, 167, 237



104, 120, 183



83, 87, 92



0, 67, 156



0, 12, 28

Previews

White Background



This preview shows how the RYB color 183, 131, 104 looks on a white background.

Color Contrast Check

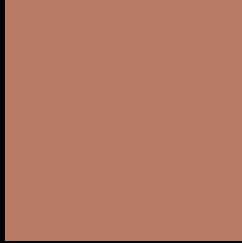
Large Text (above 18pt) WCAG AA ✓ Pass

Any Text WCAG AA × Fail

Large Text (above 18pt) WCAG AAA × Fail

Any Text WCAG AAA × Fail

Black Background



This preview shows how the RYB color 183, 131, 104 looks on a black background.

Color Contrast Check

Large Text (above 18pt) WCAG AA ✓ Pass

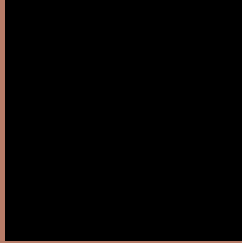
Any Text WCAG AA ✓ Pass

Large Text (above 18pt) WCAG AAA ✓ Pass

Any Text WCAG AAA × Fail

If you want to check with other color combinations, try the [Color Contrast Checker](#).

RYB 183, 131, 104 Background



This preview shows how black text looks on a background with the RYB color 183, 131, 104.



This preview shows how white text looks on a background with the RYB color 183, 131, 104.

Color Blindness Simulation

Color vision deficiency is a very complex topic, and I could not describe the different causes any better than Wikipedia does, so if you want to learn more, you should check out their [article about color blindness](#).


Dichromacy



Original Color
183, 131, 104

Protanopia
123, 147, 111

Deuteranopia
164, 164, 102



Tritanopia
185, 121, 130

Trichromacy



Original Color

183, 131, 104

Protanomaly

160, 156, 108

Deuteranomaly

171, 148, 103

Tritanomaly

184, 122, 121

Monochromacy



Original Color

183, 131, 104

Achromatopsia

139, 139, 139

Achromatomaly

155, 137, 126

CSS Examples

Text

The CSS property to change the color of the text to RYB 183, 131, 104 is called "color". The color property can be set on classes, ids or directly on the HTML element.

This example shows how text in the color `rgb(183, 124, 104)` looks like.

```
.text, #text, p{  
    color:rgb(183, 124, 104)  
}
```

If you want to add a text shadow in that color use the text-shadow property, you can generate a text shadow directly with our [CSS Text Shadow Generator](#).

Here you see how black text with a 4 pixel rgb(183, 124, 104) colored shadow looks like.

```
.shadow{ text-shadow: 4px 4px 2px rgb(183, 124, 104) }
```

Border

The CSS property to change the border of an element to RYB 183, 131, 104 is called "border". The border property can be set on classes, ids or directly on the HTML element.

This example shows the color as border, it can be applied via the CSS property "border" or "border-color".

```
.border, #border, table{ border:4px solid rgb(183, 124, 104) }
```

If only the border color should be changed use the property `border-color`.

```
.border{ border-color:rgb(183, 124, 104) }
```

If you want to add a box shadow in that color use:

Here you see how a box with a 4 pixel `rgb(183, 124, 104)` colored shadow looks like.

```
.boxshadow{ -moz-box-shadow:4px 4px 4px  
4px rgb(183, 124, 104); -webkit-box-  
shadow:4px 4px 4px 4px rgb(183, 124, 104);  
box-shadow:4px 4px 4px 4px rgb(183, 124,  
104) }
```

Background

The CSS property to change the background color of an element to RYB 183, 131, 104 is called "background". The background property can be set on classes, ids or directly on the HTML element.

```
.background, #background, body{  
background: rgb(183, 124, 104) }
```

If only the background color should be changed can be used:

```
.background{ background-color: rgb(183,  
124, 104) }
```

This example shows the color as background, it is applied via the CSS property "background".

To optimize and compress your CSS code, you can use our [online CSS compressor and optimizer](#) based on csstidy. If you want to create a linear or radial gradient as background or border, check our [CSS Gradient Generator](#).

Hey! You found this booklet interesting? Support Converting Colors with the new Membership Option!

The pro membership hides all ads, plus gives you double the colors in the color bucket, and more awesome pro features!

[Learn more, Memberships starting at \\$2.50/m!](#)

**Follow me
on Twitter!**

@ConvertingColor