

Converting Colors

`RYB(183, 138, 139)`

Have a look what the booklet for
RYB(183, 138, 139) contains.

RYB(183, 138, 139)	3
<i>Conversions</i>	4
<i>Details</i>	6
<i>Harmonies</i>	11
<i>Previews</i>	23
<i>Color Blindness Simulation</i>	26
<i>CSS Examples</i>	29

Color

R_YB(183, 138, 139)

Conversions

Conversions Part 1

Format	Color
Hex	B78A8B
RGB	183, 138, 139
RGB Percent	72%, 54%, 55%
CMY	0.2824, 0.4588, 0.4549
CMYK	0.00, 0.25, 0.24, 0.28
HSL	359°, 24%, 63%
HSV	359°, 25%, 72%
XYZ	33.2771, 30.1083, 28.4837
YIQ	151.5690, 26.4990, 9.8510

Conversions

Conversions Part 2

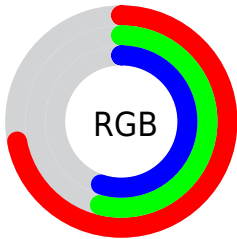
Format	Color
RYB	183, 138, 139
Decimal	12028555
CIELab	61.75, 17.28, 6.14
CIElCh	62, 18.341, 19.546
Yxy	30.1083, 0.3622, 0.3277
Android (android.graphics.Color)	4290218635 (0xFFB78A8B)
YUV	151.5690, -6.1965, 27.5650
Hunter-Lab	54.8710, 12.2289, 7.6322

Details

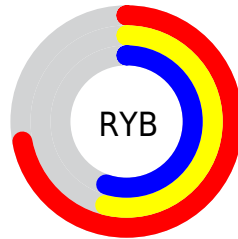
The RYB color **183, 138, 139** is a light color, and the websafe version is hex **CC9999**. A complement of this color would be **138, 161, 183**, and the grayscale version is **152, 152, 152**.

A 20% lighter version of the original color is **240, 192, 192**, and **129, 88, 89** is the 20% darker color. If you saturate the color by 10%, you get **183, 120, 121**, and if you desaturate by 10%, it is **183, 156, 157**.

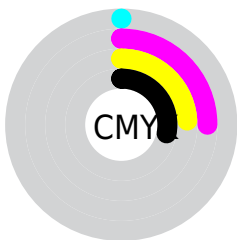
Distribution



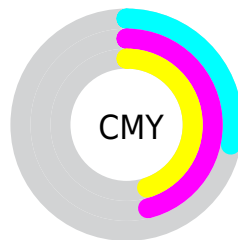
- Red (72%)
- Green (54%)
- Blue (55%)



- Red (72%)
- Yellow (54%)
- Blue (55%)



- Cyan (0%)
- Magenta (25%)
- Yellow (24%)
- Black (28%)



- Cyan (28%)
- Magenta (46%)
- Yellow (45%)

Brightness & Saturation Gradients

These gradients show how the RYB color 183, 138, 139 changes by changing the brightness by 10 percent. The first figure shows a shift by +10% for each color and the second figure -10%.

Similar to the brightness gradients but the following saturation gradients show a change of the RYB color 183, 138, 139 by changing the saturation by 10% instead.

 183, 138, 139


255, 255, 255

 240, 192, 192

 255, 220, 220

 255, 248, 249

 183, 138, 139

 156, 112, 114

 129, 88, 89

 103, 64, 66

 78, 42, 44

 54, 20, 23

 35, 0, 0

 0, 0, 0

 183, 138, 139

 183, 120, 121


 183, 138, 139

 183, 156, 157


 183, 101, 103

 183, 175, 175

 183, 83, 85

 183, 188, 193

 183, 65, 67

 183, 197, 211

 183, 46, 50

 183, 207, 230

 183, 28, 32

 183, 216, 248

 183, 10, 14

 183, 219, 255

 183, 0, 4

Harmonies

Analogous

The Analogous color harmony consists of three colors that are next to each other on the color wheel.



178, 138, 156



183, 138, 139



179, 148, 125

Triad

The Triadic color harmony groups three colors that are evenly spaced from another and form a triangle on the color wheel.



183, 138, 139



128, 156, 152



123, 142, 181

Complementary

The Complementary color scheme is a pair of colors which are on the opposite of each other on the color wheel.



183, 138, 139



138, 161, 183

Split Complementary

Split-complementary colors differ from the complementary color scheme. The scheme consists of three colors, the original color and two neighbors of the complement color.



108, 136, 173



183, 138, 139



115, 141, 158

Square

The Square scheme is like the rectangle color scheme, but the four colors are evenly spaced on the color wheel.



183, 138, 139



118, 151, 119



105, 132, 159



145, 147, 180

Rectangle

The Rectangle color scheme consists of four colors that form a rectangle on the color wheel.



183, 138, 139



172, 166, 119



105, 132, 159



117, 140, 179

Sweetspot

The Sweet Spot groups the original color and five complimentary colors.



183, 138, 139



237, 221, 221



182, 138, 183



120, 110, 110



247, 247, 247



120, 120, 120

Same Dimension

The Same Dimension uses a secret algorithm to generate beautiful new colors.



183, 138, 139



237, 166, 168



183, 177, 138



92, 83, 83



156, 0, 3



28, 0, 1

Inverse Universe

The Inverse Universe completely reimagines the original color for something new.



183, 138, 139



237, 166, 168



138, 154, 183



92, 83, 83



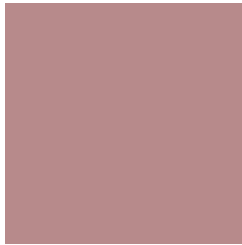
156, 0, 3



28, 0, 1

Previews

White Background



This preview shows how the RYB color 183, 138, 139 looks on a white background.

Color Contrast Check

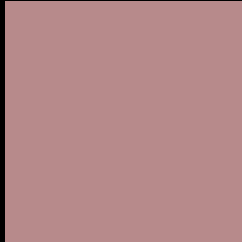
Large Text (above 18pt) WCAG AA × Fail

Any Text WCAG AA × Fail

Large Text (above 18pt) WCAG AAA × Fail

Any Text WCAG AAA × Fail

Black Background



This preview shows how the RYB color 183, 138, 139 looks on a black background.

Color Contrast Check

Large Text (above 18pt) WCAG AA ✓ Pass

Any Text WCAG AA ✓ Pass

Large Text (above 18pt) WCAG AAA ✓ Pass

Any Text WCAG AAA ✓ Pass

If you want to check with other color combinations, try the [Color Contrast Checker](#).

RYP 183, 138, 139 Background



This preview shows how black text looks on a background with the RYP color 183, 138, 139.



This preview shows how white text looks on a background with the RYP color 183, 138, 139.

Color Blindness Simulation

Color vision deficiency is a very complex topic, and I could not describe the different causes any better than Wikipedia does, so if you want to learn more, you should check out their [article about color blindness](#).

Dichromacy



Original Color
183, 138, 139

Protanopia
153, 153, 145

Deuteranopia
168, 146, 138



Tritanopia
184, 137, 147

Trichromacy



Original Color

183, 138, 139

Protanomaly

164, 145, 143

Deuteranomaly

173, 143, 138

Tritanomaly

184, 137, 144

Monochromacy



Original Color

183, 138, 139

Achromatopsia

152, 152, 152

Achromatomaly

163, 147, 147

CSS Examples

Text

The CSS property to change the color of the text to RYB 183, 138, 139 is called "color". The color property can be set on classes, ids or directly on the HTML element.

This example shows how text in the color rgb(183, 138, 139) looks like.

```
.text, #text, p{  
    color:rgb(183, 138, 139)  
}
```

If you want to add a text shadow in that color use the text-shadow property, you can generate a text shadow directly with our [CSS Text Shadow Generator](#).

Here you see how black text with a 4 pixel rgb(183, 138, 139) colored shadow looks like.

```
.shadow{ text-shadow: 4px 4px 2px rgb(183, 138, 139) }
```

Border

The CSS property to change the border of an element to RYB 183, 138, 139 is called "border". The border property can be set on classes, ids or directly on the HTML element.

This example shows the color as border, it can be applied via the CSS property "border" or "border-color".

```
.border, #border, table{ border:4px solid rgb(183, 138, 139) }
```

If only the border color should be changed use the property `border-color`.

```
.border{ border-color:rgb(183, 138, 139) }
```

If you want to add a box shadow in that color use:

Here you see how a box with a 4 pixel `rgb(183, 138, 139)` colored shadow looks like.

```
.boxshadow{ -moz-box-shadow:4px 4px 4px  
4px rgb(183, 138, 139); -webkit-box-  
shadow:4px 4px 4px 4px rgb(183, 138, 139);  
box-shadow:4px 4px 4px 4px rgb(183, 138,  
139) }
```

Background

The CSS property to change the background color of an element to RYB 183, 138, 139 is called "background". The background property can be set on classes, ids or directly on the HTML element.

```
.background, #background, body{  
background: rgb(183, 138, 139) }
```

If only the background color should be changed can be used:

```
.background{ background-color: rgb(183,  
138, 139) }
```

This example shows the color as background, it is applied via the CSS property "background".

To optimize and compress your CSS code, you can use our [online CSS compressor and optimizer](#) based on csstidy. If you want to create a linear or radial gradient as background or border, check our [CSS Gradient Generator](#).

Hey! You found this booklet interesting? Support Converting Colors with the new Membership Option!

The pro membership hides all ads, plus gives you double the colors in the color bucket, and more awesome pro features!

[Learn more, Memberships starting at \\$2.50/m!](#)

**Follow me
on Twitter!**

@ConvertingColor