

Converting Colors

`RYB(183, 146, 146)`

Have a look what the booklet for
RYB(183, 146, 146) contains.

RYB(183, 146, 146)	3
<i>Conversions</i>	4
<i>Details</i>	6
<i>Harmonies</i>	11
<i>Previews</i>	23
<i>Color Blindness Simulation</i>	26
<i>CSS Examples</i>	29

Color

R_YB(183, 146, 146)

Conversions

Conversions Part 1

Format	Color
Hex	B79292
RGB	183, 146, 146
RGB Percent	72%, 57%, 57%
CMY	0.2824, 0.4275, 0.4275
CMYK	0.00, 0.20, 0.20, 0.28
HSL	0°, 20%, 65%
HSV	0°, 20%, 72%
XYZ	34.9956, 32.7004, 31.6615
YIQ	157.0630, 22.0520, 7.8440

Conversions

Conversions Part 2

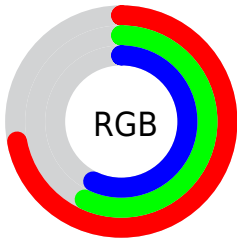
Format	Color
R_{YB}	183, 146, 146
Decimal	12030610
CIE _{Lab}	63.92, 13.90, 5.29
CIE _{LCh}	64, 14.867, 20.833
Yxy	32.7004, 0.3522, 0.3291
Android (android.graphics.Color)	4290220690 (0xFFB79292)
YUV	157.0630, -5.4541, 22.7467
Hunter-Lab	57.1842, 9.1661, 7.2016

Details

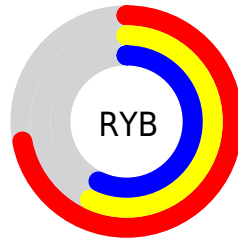
The RYB color **183, 146, 146** is a light color, and the websafe version is hex **CC9999**. A complement of this color would be **146, 165, 183**, and the grayscale version is **157, 157, 157**.

A 20% lighter version of the original color is **239, 200, 200**, and **129, 95, 96** is the 20% darker color. If you saturate the color by 10%, you get **183, 128, 128**, and if you desaturate by 10%, it is **183, 164, 164**.

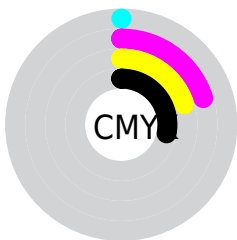
Distribution



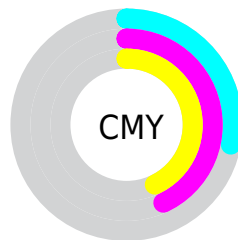
- Red (72%)
- Green (57%)
- Blue (57%)



- Red (72%)
- Yellow (57%)
- Blue (57%)



- Cyan (0%)
- Magenta (20%)
- Yellow (20%)
- Black (28%)



- Cyan (28%)
- Magenta (43%)
- Yellow (43%)

Brightness & Saturation Gradients

These gradients show how the RYB color 183, 146, 146 changes by changing the brightness by 10 percent. The first figure shows a shift by +10% for each color and the second figure -10%.

Similar to the brightness gradients but the following saturation gradients show a change of the RYB color 183, 146, 146 by changing the saturation by 10% instead.

 183, 146, 146

255, 255, 255

 239, 200, 200

 255, 228, 228

 183, 146, 146

 156, 120, 120

 129, 95, 96

 104, 72, 72


 79, 49, 50

 55, 27, 29

 35, 3, 2

 0, 0, 0

 183, 146, 146

 183, 128, 128


 183, 146, 146

 183, 164, 164

 183, 109, 109

 183, 183, 183

 183, 91, 91

 183, 192, 201

 183, 73, 73

 183, 201, 219

 183, 55, 55

 183, 211, 238

 183, 36, 36

 183, 219, 255

 183, 18, 18

 183, 0, 0

Harmonies

Analogous

The Analogous color harmony consists of three colors that are next to each other on the color wheel.



179, 146, 159



183, 146, 146



179, 153, 135

Triad

The Triadic color harmony groups three colors that are evenly spaced from another and form a triangle on the color wheel.



183, 146, 146



138, 160, 158



135, 150, 181

Complementary

The Complementary color scheme is a pair of colors which are on the opposite of each other on the color wheel.



183, 146, 146



146, 165, 183

Split Complementary

Split-complementary colors differ from the complementary color scheme. The scheme consists of three colors, the original color and two neighbors of the complement color.



123, 145, 175



183, 146, 146



127, 148, 162

Square

The Square scheme is like the rectangle color scheme, but the four colors are evenly spaced on the color wheel.



183, 146, 146



130, 157, 132



120, 142, 164



152, 153, 179

Rectangle

The Rectangle color scheme consists of four colors that form a rectangle on the color wheel.



183, 146, 146



173, 171, 130



120, 142, 164



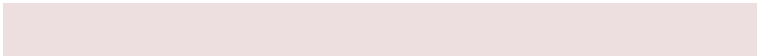
130, 148, 179

Sweetspot

The Sweet Spot groups the original color and five complimentary colors.



183, 146, 146



237, 223, 223



183, 146, 183



120, 111, 111



247, 247, 247



120, 120, 120

Same Dimension

The Same Dimension uses a secret algorithm to generate beautiful new colors.



183, 146, 146



237, 180, 180



181, 183, 146



92, 83, 83



156, 0, 0



28, 0, 0

Inverse Universe

The Inverse Universe completely reimagines the original color for something new.



146, 165, 183



180, 209, 237



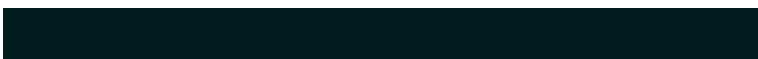
146, 159, 183



83, 88, 92



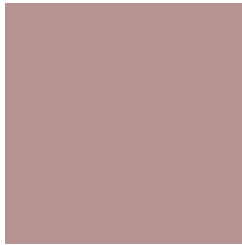
0, 78, 156



0, 14, 28

Previews

White Background



This preview shows how the RYB color 183, 146, 146 looks on a white background.

Color Contrast Check

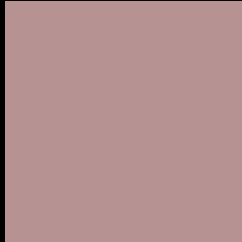
Large Text (above 18pt) WCAG AA × Fail

Any Text WCAG AA × Fail

Large Text (above 18pt) WCAG AAA × Fail

Any Text WCAG AAA × Fail

Black Background



This preview shows how the RYB color 183, 146, 146 looks on a black background.

Color Contrast Check

Large Text (above 18pt) WCAG AA ✓ Pass

Any Text WCAG AA ✓ Pass

Large Text (above 18pt) WCAG AAA ✓ Pass

Any Text WCAG AAA ✓ Pass

If you want to check with other color combinations, try the [Color Contrast Checker](#).

RYB 183, 146, 146 Background



This preview shows how black text looks on a background with the RYB color 183, 146, 146.



This preview shows how white text looks on a background with the RYB color 183, 146, 146.

Color Blindness Simulation

Color vision deficiency is a very complex topic, and I could not describe the different causes any better than Wikipedia does, so if you want to learn more, you should check out their [article about color blindness](#).

Dichromacy



Original Color

183, 146, 146

Protanopia

159, 156, 151

Deuteranopia

174, 151, 145



Tritanopia
184, 144, 156

Trichromacy



Original Color

183, 146, 146

Protanomaly

168, 151, 149

Deuteranomaly

177, 150, 145

Tritanomaly

184, 145, 152

Monochromacy



Original Color

183, 146, 146

Achromatopsia

157, 157, 157

Achromatomaly

166, 153, 153

CSS Examples

Text

The CSS property to change the color of the text to RYB 183, 146, 146 is called "color". The color property can be set on classes, ids or directly on the HTML element.

This example shows how text in the color rgb(183, 146, 146) looks like.

```
.text, #text, p{  
    color:rgb(183, 146, 146)  
}
```

If you want to add a text shadow in that color use the text-shadow property, you can generate a text shadow directly with our [CSS Text Shadow Generator](#).

Here you see how black text with a 4 pixel rgb(183, 146, 146) colored shadow looks like.

```
.shadow{ text-shadow: 4px 4px 2px rgb(183, 146, 146) }
```

Border

The CSS property to change the border of an element to RYB 183, 146, 146 is called "border". The border property can be set on classes, ids or directly on the HTML element.

This example shows the color as border, it can be applied via the CSS property "border" or "border-color".

```
.border, #border, table{ border:4px solid rgb(183, 146, 146) }
```

If only the border color should be changed use the property `border-color`.

```
.border{ border-color:rgb(183, 146, 146) }
```

If you want to add a box shadow in that color use:

Here you see how a box with a 4 pixel `rgb(183, 146, 146)` colored shadow looks like.

```
.boxshadow{ -moz-box-shadow:4px 4px 4px 4px rgb(183, 146, 146); -webkit-box-shadow:4px 4px 4px 4px rgb(183, 146, 146); box-shadow:4px 4px 4px 4px rgb(183, 146, 146) }
```

Background

The CSS property to change the background color of an element to RYB 183, 146, 146 is called "background". The background property can be set on classes, ids or directly on the HTML element.

```
.background, #background, body{  
background: rgb(183, 146, 146) }
```

If only the background color should be changed can be used:

```
.background{ background-color: rgb(183,  
146, 146) }
```

This example shows the color as background, it is applied via the CSS property "background".

To optimize and compress your CSS code, you can use our [online CSS compressor and optimizer](#) based on csstidy. If you want to create a linear or radial gradient as background or border, check our [CSS Gradient Generator](#).

Hey! You found this booklet interesting? Support Converting Colors with the new Membership Option!

The pro membership hides all ads, plus gives you double the colors in the color bucket, and more awesome pro features!

[Learn more, Memberships starting at \\$2.50/m!](#)

**Follow me
on Twitter!**

@ConvertingColor