

Converting Colors

`RYB(183, 147, 154)`

Have a look what the booklet for
RYB(183, 147, 154) contains.

RYB(183, 147, 154)	3
<i>Conversions</i>	4
<i>Details</i>	6
<i>Harmonies</i>	11
<i>Previews</i>	23
<i>Color Blindness Simulation</i>	26
<i>CSS Examples</i>	29

Color

$\text{RYB}(183, 147, 154)$

Conversions

Conversions Part 1

Format	Color
Hex	B7939A
RGB	183, 147, 154
RGB Percent	72%, 58%, 60%
CMY	0.2824, 0.4235, 0.3961
CMYK	0.00, 0.20, 0.16, 0.28
HSL	348°, 20%, 65%
HSV	348°, 20%, 72%
XYZ	35.7949, 33.2678, 35.1066
YIQ	158.5620, 19.2090, 9.8090

Conversions

Conversions Part 2

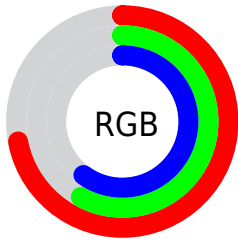
Format	Color
R_{YB}	183, 147, 154
Decimal	12030874
CIE _{Lab}	64.38, 14.62, 1.44
CIE _{LCh}	64, 14.692, 5.619
Yxy	33.2678, 0.3436, 0.3194
Android (android.graphics.Color)	4290220954 (0xFFB7939A)
YUV	158.5620, -2.2491, 21.4321
Hunter-Lab	57.6783, 9.8394, 4.2872

Details

The RYB color **183, 147, 154** is a light color, and the websafe version is hex **CC9999**. A complement of this color would be **147, 167, 183**, and the grayscale version is **159, 159, 159**.

A 20% lighter version of the original color is **239, 201, 208**, and **130, 96, 103** is the 20% darker color. If you saturate the color by 10%, you get **183, 129, 139**, and if you desaturate by 10%, it is **183, 165, 169**.

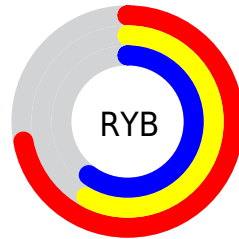
Distribution



Red (72%)

Green (58%)

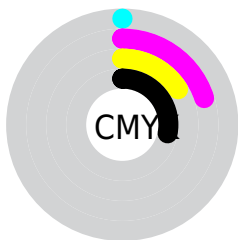
Blue (60%)



Red (72%)

Yellow (58%)

Blue (60%)

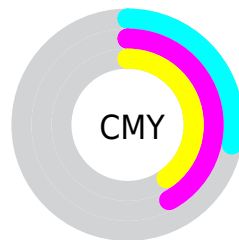


Cyan (0%)

Magenta (20%)

Yellow (16%)

Black (28%)



Cyan (28%)

Magenta (42%)

Yellow (40%)

Brightness & Saturation Gradients

These gradients show how the RYB color 183, 147, 154 changes by changing the brightness by 10 percent. The first figure shows a shift by +10% for each color and the second figure -10%.

Similar to the brightness gradients but the following saturation gradients show a change of the RYB color 183, 147, 154 by changing the saturation by 10% instead.

 183, 147, 154

255, 255, 255

 239, 201, 208

 255, 229, 237

 183, 147, 154

 156, 121, 128

 130, 96, 103

 104, 72, 79

 79, 50, 56

 56, 28, 35

 35, 4, 13

 0, 0, 0

 183, 147, 154

 183, 129, 139

 183, 147, 154

 183, 165, 169

■ 183, 110, 125

■ 183, 184, 184

■ 183, 92, 110

■ 183, 194, 202

■ 183, 74, 95

■ 183, 203, 220

■ 183, 55, 80

■ 183, 214, 239

■ 183, 37, 66

■ 183, 223, 255

■ 183, 19, 51

■ 183, 219, 255

■ 183, 1, 36

■ 183, 0, 36

Harmonies

Analogous

The Analogous color harmony consists of three colors that are next to each other on the color wheel.



175, 148, 167



183, 147, 154



183, 149, 141

Triad

The Triadic color harmony groups three colors that are evenly spaced from another and form a triangle on the color wheel.



183, 147, 154



135, 160, 146



130, 149, 180

Complementary

The Complementary color scheme is a pair of colors which are on the opposite of each other on the color wheel.



183, 147, 154



147, 167, 183

Split Complementary

Split-complementary colors differ from the complementary color scheme. The scheme consists of three colors, the original color and two neighbors of the complement color.



122, 144, 171



183, 147, 154



135, 156, 163

Square

The Square scheme is like the rectangle color scheme, but the four colors are evenly spaced on the color wheel.



183, 147, 154



140, 164, 130



124, 146, 164



145, 153, 182

Rectangle

The Rectangle color scheme consists of four colors that form a rectangle on the color wheel.



183, 147, 154



179, 158, 135



124, 146, 164



126, 147, 177

Sweetspot

The Sweet Spot groups the original color and five complimentary colors.



183, 147, 154



237, 223, 226



176, 147, 183



120, 111, 113



247, 247, 247



120, 120, 120

Same Dimension

The Same Dimension uses a secret algorithm to generate beautiful new colors.



183, 147, 154



237, 180, 191



183, 163, 147



92, 83, 84



156, 0, 30



28, 0, 5

Inverse Universe

The Inverse Universe completely reimagines the original color for something new.



183, 147, 154



237, 180, 191



147, 162, 183



92, 83, 84



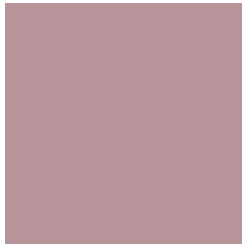
156, 0, 30



28, 0, 5

Previews

White Background



This preview shows how the RYB color 183, 147, 154 looks on a white background.

Color Contrast Check

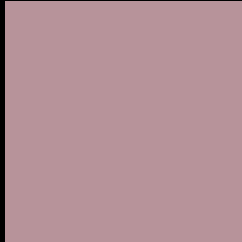
Large Text (above 18pt) WCAG AA × Fail

Any Text WCAG AA × Fail

Large Text (above 18pt) WCAG AAA × Fail

Any Text WCAG AAA × Fail

Black Background



This preview shows how the RYB color 183, 147, 154 looks on a black background.

Color Contrast Check

Large Text (above 18pt) WCAG AA ✓ Pass

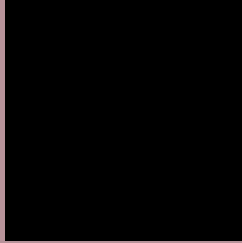
Any Text WCAG AA ✓ Pass

Large Text (above 18pt) WCAG AAA ✓ Pass

Any Text WCAG AAA ✓ Pass

If you want to check with other color combinations, try the [Color Contrast Checker](#).

R Y B 183, 147, 154 Background



This preview shows how black text looks on a background with the RYB color 183, 147, 154.



This preview shows how white text looks on a background with the RYB color 183, 147, 154.

Color Blindness Simulation

Color vision deficiency is a very complex topic, and I could not describe the different causes any better than Wikipedia does, so if you want to learn more, you should check out their [article about color blindness](#).

Dichromacy



Original Color

183, 147, 154

Protanopia

158, 155, 159

Deuteranopia

172, 151, 153



Tritanopia
183, 146, 158

Trichromacy



Original Color

183, 147, 154

Protanomaly

167, 152, 157

Deuteranomaly

176, 150, 153

Tritanomaly

183, 146, 157

Monochromacy



Original Color

183, 147, 154

Achromatopsia

159, 159, 159

Achromatomaly

168, 155, 157

CSS Examples

Text

The CSS property to change the color of the text to RYB 183, 147, 154 is called "color". The color property can be set on classes, ids or directly on the HTML element.

This example shows how text in the color rgb(183, 147, 154) looks like.

```
.text, #text, p{  
    color:rgb(183, 147, 154)  
}
```

If you want to add a text shadow in that color use the text-shadow property, you can generate a text shadow directly with our [CSS Text Shadow Generator](#).

Here you see how black text with a 4 pixel rgb(183, 147, 154) colored shadow looks like.

```
.shadow{ text-shadow: 4px 4px 2px rgb(183, 147, 154) }
```

Border

The CSS property to change the border of an element to RYB 183, 147, 154 is called "border". The border property can be set on classes, ids or directly on the HTML element.

This example shows the color as border, it can be applied via the CSS property "border" or "border-color".

```
.border, #border, table{ border:4px solid rgb(183, 147, 154) }
```

If only the border color should be changed use the property `border-color`.

```
.border{ border-color:rgb(183, 147, 154) }
```

If you want to add a box shadow in that color use:

Here you see how a box with a 4 pixel `rgb(183, 147, 154)` colored shadow looks like.

```
.boxshadow{ -moz-box-shadow:4px 4px 4px 4px rgb(183, 147, 154); -webkit-box-shadow:4px 4px 4px 4px rgb(183, 147, 154); box-shadow:4px 4px 4px 4px rgb(183, 147, 154) }
```

Background

The CSS property to change the background color of an element to RYB 183, 147, 154 is called "background". The background property can be set on classes, ids or directly on the HTML element.

```
.background, #background, body{  
background: rgb(183, 147, 154) }
```

If only the background color should be changed can be used:

```
.background{ background-color: rgb(183,  
147, 154) }
```

This example shows the color as background, it is applied via the CSS property "background".

To optimize and compress your CSS code, you can use our [online CSS compressor and optimizer](#) based on csstidy. If you want to create a linear or radial gradient as background or border, check our [CSS Gradient Generator](#).

Hey! You found this booklet interesting? Support Converting Colors with the new Membership Option!

The pro membership hides all ads, plus gives you double the colors in the color bucket, and more awesome pro features!

[Learn more, Memberships starting at \\$2.50/m!](#)

**Follow me
on Twitter!**

@ConvertingColor