

Converting Colors

`RYB(183, 153, 144)`

Have a look what the booklet for
RYB(183, 153, 144) contains.

| | |
|--|----|
| RYB(183, 153, 144) | 3 |
| <i>Conversions</i> | 4 |
| <i>Details</i> | 6 |
| <i>Harmonies</i> | 11 |
| <i>Previews</i> | 23 |
| <i>Color Blindness Simulation</i> | 26 |
| <i>CSS Examples</i> | 29 |

Color

R_YB(183, 153, 144)

Conversions

Conversions Part 1

| Format | Color |
|---------------|---|
| Hex | B79790 |
| RGB | 183, 151, 144 |
| RGB Percent | 72%, 59%, 56% |
| CMY | 0.2824, 0.4066, 0.4353 |
| CMYK | 0.00, 0.17, 0.21, 0.28 |
| HSL | 11°, 21%, 64% |
| HSV | 11°, 21%, 72% |
| XYZ | 35.6795, 34.3148, 31.1285 |
| YIQ | 159.7700, 21.3190, 4.6070 |

Conversions

Conversions Part 2

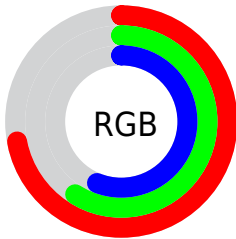
| Format | Color |
|-------------------------------------|--|
| RYB | 183, 153, 144 |
| Decimal | 12031888 |
| CIELab | 65.21, 10.64, 8.27 |
| CIELCh | 65, 13.471, 37.855 |
| Yxy | 34.3148, 0.3528, 0.3393 |
| Android (android.graphics.Color) | 4290221968 (0xFFB79790) |
| YUV | 159.7700, -7.7746, 20.3727 |
| Hunter-Lab | 58.5789, 6.2085, 9.4988 |

Details

The RYB color **183, 153, 144** is a light color, and the websafe version is hex **CC9999**. A complement of this color would be **144, 162, 183**, and the grayscale version is **160, 160, 160**.

A 20% lighter version of the original color is **239, 206, 198**, and **129, 101, 94** is the 20% darker color. If you saturate the color by 10%, you get **183, 138, 126**, and if you desaturate by 10%, it is **183, 167, 162**.

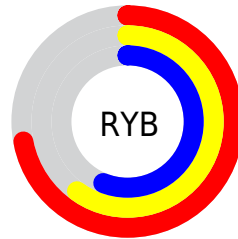
Distribution



Red (72%)

Green (59%)

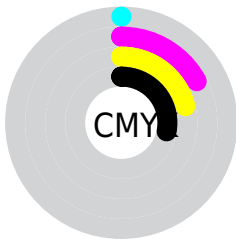
Blue (56%)



Red (72%)

Yellow (60%)

Blue (56%)

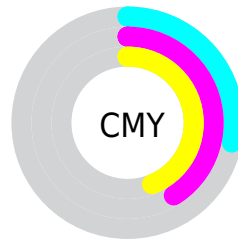


Cyan (0%)

Magenta (17%)

Yellow (21%)

Black (28%)



Cyan (28%)

Magenta (41%)

Yellow (44%)

Brightness & Saturation Gradients

These gradients show how the RYB color 183, 153, 144 changes by changing the brightness by 10 percent. The first figure shows a shift by +10% for each color and the second figure -10%.

Similar to the brightness gradients but the following saturation gradients show a change of the RYB color 183, 153, 144 by changing the saturation by 10% instead.

 183, 153, 144


255, 255, 255

 239, 208, 198

 255, 237, 226

254, 255, 254

 183, 153, 144

 156, 127, 118

 129, 101, 94

 104, 77, 70

 79, 55, 48

 56, 33, 27

 35, 14, 0

 0, 0, 0

 183, 153, 144

 183, 138, 126

 183, 153, 144

 183, 167, 162

■ 183, 126, 107

■ 183, 181, 181

■ 183, 111, 89

■ 183, 190, 199

■ 183, 97, 71

■ 183, 198, 217

■ 183, 82, 53

■ 183, 207, 236

■ 183, 68, 34

■ 183, 215, 254

■ 183, 54, 16

■ 183, 219, 255

■ 183, 42, 0

Harmonies

Analogous

The Analogous color harmony consists of three colors that are next to each other on the color wheel.



183, 150, 155



183, 153, 144



176, 169, 136

Triad

The Triadic color harmony groups three colors that are evenly spaced from another and form a triangle on the color wheel.



183, 153, 144



138, 157, 165



149, 156, 182

Complementary

The Complementary color scheme is a pair of colors which are on the opposite of each other on the color wheel.



183, 153, 144



144, 162, 183

Split Complementary

Split-complementary colors differ from the complementary color scheme. The scheme consists of three colors, the original color and two neighbors of the complement color.



135, 152, 180



183, 153, 144



129, 148, 165

Square

The Square scheme is like the rectangle color scheme, but the four colors are evenly spaced on the color wheel.



183, 153, 144



139, 162, 150



128, 148, 173



165, 154, 177

Rectangle

The Rectangle color scheme consists of four colors that form a rectangle on the color wheel.



183, 153, 144



152, 169, 134



128, 148, 173



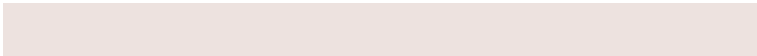
144, 155, 182

Sweetspot

The Sweet Spot groups the original color and five complimentary colors.



183, 153, 144



237, 227, 223



183, 144, 176



120, 114, 111



247, 247, 247



120, 120, 120

Same Dimension

The Same Dimension uses a secret algorithm to generate beautiful new colors.



183, 153, 144



237, 190, 175



161, 183, 144



92, 84, 83



156, 36, 0



28, 6, 0

Inverse Universe

The Inverse Universe completely reimagines the original color for something new.



144, 162, 183



175, 203, 237



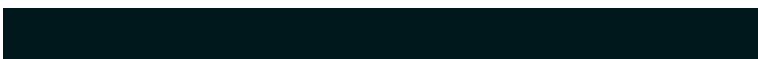
144, 153, 183



83, 87, 92



0, 70, 156



0, 13, 28

Previews

White Background



This preview shows how the RYB color 183, 153, 144 looks on a white background.

Color Contrast Check

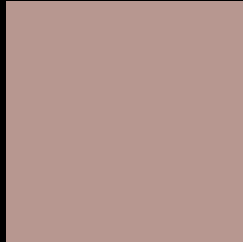
Large Text (above 18pt) WCAG AA × Fail

Any Text WCAG AA × Fail

Large Text (above 18pt) WCAG AAA × Fail

Any Text WCAG AAA × Fail

Black Background



This preview shows how the RYB color 183, 153, 144 looks on a black background.

Color Contrast Check

Large Text (above 18pt) WCAG AA ✓ Pass

Any Text WCAG AA ✓ Pass

Large Text (above 18pt) WCAG AAA ✓ Pass

Any Text WCAG AAA ✓ Pass

If you want to check with other color combinations, try the [Color Contrast Checker](#).

RYB 183, 153, 144 Background



This preview shows how black text looks on a background with the RYB color 183, 153, 144.



This preview shows how white text looks on a background with the RYB color 183, 153, 144.

Color Blindness Simulation

Color vision deficiency is a very complex topic, and I could not describe the different causes any better than Wikipedia does, so if you want to learn more, you should check out their [article about color blindness](#).

Dichromacy



Original Color
183, 153, 144

Protanopia
156, 164, 147

Deuteranopia
179, 156, 144



Tritanopia
185, 149, 160

Trichromacy



Original Color
183, 153, 144

Protanomaly
171, 163, 146

Deuteranomaly
180, 154, 144

Tritanomaly
184, 150, 154

Monochromacy



Original Color
183, 153, 144

Achromatopsia
160, 160, 160

Achromatomaly
168, 158, 154

CSS Examples

Text

The CSS property to change the color of the text to RYB 183, 153, 144 is called "color". The color property can be set on classes, ids or directly on the HTML element.

This example shows how text in the color `rgb(183, 151, 144)` looks like.

```
.text, #text, p{  
    color:rgb(183, 151, 144)  
}
```

If you want to add a text shadow in that color use the text-shadow property, you can generate a text shadow directly with our [CSS Text Shadow Generator](#).

Here you see how black text with a 4 pixel rgb(183, 151, 144) colored shadow looks like.

```
.shadow{ text-shadow: 4px 4px 2px rgb(183, 151, 144) }
```

Border

The CSS property to change the border of an element to RYB 183, 153, 144 is called "border". The border property can be set on classes, ids or directly on the HTML element.

This example shows the color as border, it can be applied via the CSS property "border" or "border-color".

```
.border, #border, table{ border:4px solid rgb(183, 151, 144) }
```

If only the border color should be changed use the property `border-color`.

```
.border{ border-color:rgb(183, 151, 144) }
```

If you want to add a box shadow in that color use:

Here you see how a box with a 4 pixel `rgb(183, 151, 144)` colored shadow looks like.

```
.boxshadow{ -moz-box-shadow:4px 4px 4px 4px rgb(183, 151, 144); -webkit-box-shadow:4px 4px 4px 4px rgb(183, 151, 144); box-shadow:4px 4px 4px 4px rgb(183, 151, 144) }
```

Background

The CSS property to change the background color of an element to RYB 183, 153, 144 is called "background". The background property can be set on classes, ids or directly on the HTML element.

```
.background, #background, body{  
background: rgb(183, 151, 144) }
```

If only the background color should be changed can be used:

```
.background{ background-color: rgb(183,  
151, 144) }
```

This example shows the color as background, it is applied via the CSS property "background".

To optimize and compress your CSS code, you can use our [online CSS compressor and optimizer](#) based on csstidy. If you want to create a linear or radial gradient as background or border, check our [CSS Gradient Generator](#).

Hey! You found this booklet interesting? Support Converting Colors with the new Membership Option!

The pro membership hides all ads, plus gives you double the colors in the color bucket, and more awesome pro features!

[Learn more, Memberships starting at \\$2.50/m!](#)

**Follow me
on Twitter!**

@ConvertingColor