

Converting Colors

`RYB(183, 169, 125)`

Have a look what the booklet for
RYB(183, 169, 125) contains.

RYB(183, 169, 125)	3
<i>Conversions</i>	4
<i>Details</i>	6
<i>Harmonies</i>	11
<i>Previews</i>	23
<i>Color Blindness Simulation</i>	26
<i>CSS Examples</i>	29

Color

R_YB(183, 169, 125)

Conversions

Conversions Part 1

Format	Color
Hex	B7967D
RGB	183, 150, 125
RGB Percent	72%, 59%, 49%
CMY	0.2824, 0.4117, 0.5098
CMYK	0.00, 0.18, 0.32, 0.28
HSL	26°, 29%, 60%
HSV	26°, 32%, 72%
XYZ	34.1396, 33.3669, 24.0431
YIQ	157.0170, 27.6930, -0.7790

Conversions

Conversions Part 2

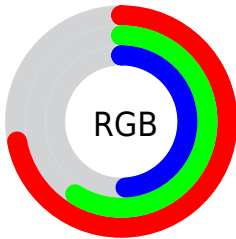
Format	Color
RYB	183, 169, 125
Decimal	12031613
CIELab	64.46, 8.62, 17.83
CIElCh	64, 19.809, 64.192
Yxy	33.3669, 0.3729, 0.3645
Android (android.graphics.Color)	4290221693 (0xFFB7967D)
YUV	157.0170, -15.7844, 22.7871
Hunter-Lab	57.7641, 4.4095, 15.7566

Details

The RYB color **183, 169, 125** is a light color, and the websafe version is hex **CC9999**. A complement of this color would be **125, 146, 183**, and the grayscale version is **157, 157, 157**.

A 20% lighter version of the original color is **240, 223, 178**, and **129, 117, 76** is the 20% darker color. If you saturate the color by 10%, you get **183, 165, 107**, and if you desaturate by 10%, it is **183, 173, 143**.

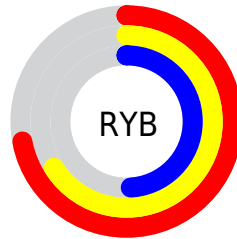
Distribution



Red (72%)

Green (59%)

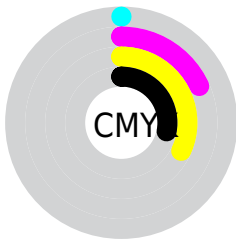
Blue (49%)



Red (72%)

Yellow (66%)

Blue (49%)

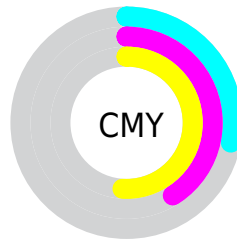


Cyan (0%)

Magenta (18%)

Yellow (32%)

Black (28%)



Cyan (28%)

Magenta (41%)

Yellow (51%)

Brightness & Saturation Gradients

These gradients show how the RYB color 183, 169, 125 changes by changing the brightness by 10 percent. The first figure shows a shift by +10% for each color and the second figure -10%.

Similar to the brightness gradients but the following saturation gradients show a change of the RYB color 183, 169, 125 by changing the saturation by 10% instead.

 183, 169, 125

255, 255, 255


 240, 223, 178

 248, 255, 205


 233, 255, 233

 183, 169, 125

 156, 142, 100

 129, 117, 76

 103, 92, 53

 78, 71, 32

 54, 52, 9

 32, 13, 0


 0, 0, 0

 183, 169, 125


 183, 165, 107


 183, 169, 125


 183, 173, 143

 183, 160, 88


 183, 178, 162

 183, 157, 70


 183, 182, 180

 183, 150, 52

 183, 189, 198

 183, 148, 33

 183, 195, 217

 183, 144, 15

 183, 202, 235

 183, 139, 0

 183, 208, 253

 183, 213, 255

 183, 216, 255

Harmonies

Analogous

The Analogous color harmony consists of three colors that are next to each other on the color wheel.



192, 146, 137



183, 169, 125



135, 167, 121

Triad

The Triadic color harmony groups three colors that are evenly spaced from another and form a triangle on the color wheel.



183, 169, 125



112, 141, 166



163, 151, 186

Complementary

The Complementary color scheme is a pair of colors which are on the opposite of each other on the color wheel.



183, 169, 125



125, 146, 183

Split Complementary

Split-complementary colors differ from the complementary color scheme. The scheme consists of three colors, the original color and two neighbors of the complement color.



139, 152, 191



183, 169, 125



107, 139, 175

Square

The Square scheme is like the rectangle color scheme, but the four colors are evenly spaced on the color wheel.



183, 169, 125



128, 156, 165



118, 145, 188



181, 146, 172

Rectangle

The Rectangle color scheme consists of four colors that form a rectangle on the color wheel.



183, 169, 125



124, 160, 130



118, 145, 188



155, 153, 188

Sweetspot

The Sweet Spot groups the original color and five complimentary colors.



183, 169, 125



237, 233, 213



183, 125, 159



120, 118, 105



247, 247, 247



120, 120, 120

Same Dimension

The Same Dimension uses a secret algorithm to generate beautiful new colors.



183, 169, 125



237, 216, 147



130, 183, 125



92, 90, 83



156, 117, 0



28, 21, 0

Inverse Universe

The Inverse Universe completely reimagines the original color for something new.



125, 146, 183



147, 180, 237



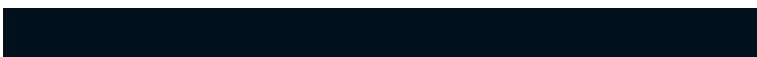
125, 130, 183



83, 86, 92



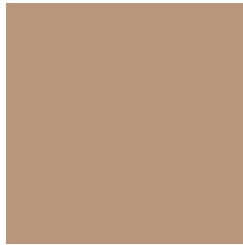
0, 56, 156



0, 10, 28

Previews

White Background



This preview shows how the RYB color 183, 169, 125 looks on a white background.

Color Contrast Check

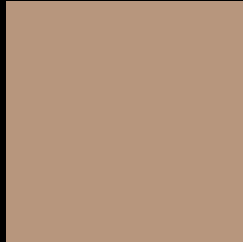
Large Text (above 18pt) WCAG AA × Fail

Any Text WCAG AA × Fail

Large Text (above 18pt) WCAG AAA × Fail

Any Text WCAG AAA × Fail

Black Background



This preview shows how the RYB color 183, 169, 125 looks on a black background.

Color Contrast Check

Large Text (above 18pt) WCAG AA ✓ Pass

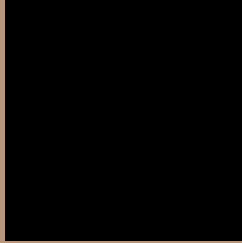
Any Text WCAG AA ✓ Pass

Large Text (above 18pt) WCAG AAA ✓ Pass

Any Text WCAG AAA ✓ Pass

If you want to check with other color combinations, try the [Color Contrast Checker](#).

RYB 183, 169, 125 Background



This preview shows how black text looks on a background with the RYB color 183, 169, 125.



This preview shows how white text looks on a background with the RYB color 183, 169, 125.

Color Blindness Simulation

Color vision deficiency is a very complex topic, and I could not describe the different causes any better than Wikipedia does, so if you want to learn more, you should check out their [article about color blindness](#).

Dichromacy



Original Color

183, 169, 125

Protanopia

142, 166, 128

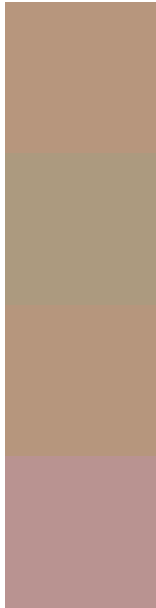
Deuteranopia

182, 170, 125



Tritanopia
186, 146, 157

Trichromacy



Original Color
183, 169, 125

Protanomaly
157, 172, 127

Deuteranomaly
182, 170, 125

Tritanomaly
185, 147, 145

Monochromacy



Original Color
183, 169, 125

Achromatopsia
157, 157, 157

Achromatomaly
166, 161, 145

CSS Examples

Text

The CSS property to change the color of the text to RYB 183, 169, 125 is called "color". The color property can be set on classes, ids or directly on the HTML element.

This example shows how text in the color `rgb(183, 150, 125)` looks like.

```
.text, #text, p{  
    color:rgb(183, 150, 125)  
}
```

If you want to add a text shadow in that color use the text-shadow property, you can generate a text shadow directly with our [CSS Text Shadow Generator](#).

Here you see how black text with a 4 pixel rgb(183, 150, 125) colored shadow looks like.

```
.shadow{ text-shadow: 4px 4px 2px rgb(183, 150, 125) }
```

Border

The CSS property to change the border of an element to RYB 183, 169, 125 is called "border". The border property can be set on classes, ids or directly on the HTML element.

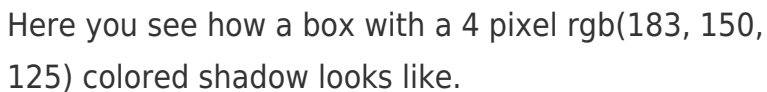
This example shows the color as border, it can be applied via the CSS property "border" or "border-color".

```
.border, #border, table{ border:4px solid rgb(183, 150, 125) }
```

If only the border color should be changed use the property `border-color`.

```
.border{ border-color:rgb(183, 150, 125) }
```

If you want to add a box shadow in that color use:



Here you see how a box with a 4 pixel `rgb(183, 150, 125)` colored shadow looks like.

```
.boxshadow{ -moz-box-shadow:4px 4px 4px 4px rgb(183, 150, 125); -webkit-box-shadow:4px 4px 4px 4px rgb(183, 150, 125); box-shadow:4px 4px 4px 4px rgb(183, 150, 125) }
```

Background

The CSS property to change the background color of an element to RYB 183, 169, 125 is called "background". The background property can be set on classes, ids or directly on the HTML element.

```
.background, #background, body{  
background: rgb(183, 150, 125) }
```

If only the background color should be changed can be used:

```
.background{ background-color: rgb(183,  
150, 125) }
```

This example shows the color as background, it is applied via the CSS property "background".

To optimize and compress your CSS code, you can use our [online CSS compressor and optimizer](#) based on csstidy. If you want to create a linear or radial gradient as background or border, check our [CSS Gradient Generator](#).

Hey! You found this booklet interesting? Support Converting Colors with the new Membership Option!

The pro membership hides all ads, plus gives you double the colors in the color bucket, and more awesome pro features!

[Learn more, Memberships starting at \\$2.50/m!](#)

**Follow me
on Twitter!**

@ConvertingColor