

Converting Colors

`RYB(184, 134, 139)`

Have a look what the booklet for
RYB(184, 134, 139) contains.

RYB(184, 134, 139)	3
<i>Conversions</i>	4
<i>Details</i>	6
<i>Harmonies</i>	11
<i>Previews</i>	23
<i>Color Blindness Simulation</i>	26
<i>CSS Examples</i>	29

Color

R_YB(184, 134, 139)

Conversions

Conversions Part 1

Format	Color
Hex	B8868B
RGB	184, 134, 139
RGB Percent	72%, 53%, 55%
CMY	0.2784, 0.4745, 0.4549
CMYK	0.00, 0.27, 0.24, 0.28
HSL	354°, 26%, 62%
HSV	354°, 27%, 72%
XYZ	32.9525, 29.1046, 28.3071
YIQ	149.5200, 28.1950, 12.1550

Conversions

Conversions Part 2

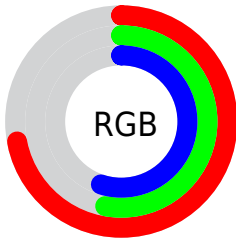
Format	Color
RYB	184, 134, 139
Decimal	12093067
CIELab	60.87, 19.90, 4.89
CIELCh	61, 20.493, 13.819
Yxy	29.1046, 0.3647, 0.3221
Android (android.graphics.Color)	4290283147 (0xFFB8868B)
YUV	149.5200, -5.1864, 30.2390
Hunter-Lab	53.9487, 14.6195, 6.6544

Details

The RYB color **184, 134, 139** is a light color, and the websafe version is hex **CC9999**. A complement of this color would be **134, 160, 184**, and the grayscale version is **150, 150, 150**.

A 20% lighter version of the original color is **241, 187, 192**, and **130, 84, 89** is the 20% darker color. If you saturate the color by 10%, you get **184, 116, 122**, and if you desaturate by 10%, it is **184, 152, 156**.

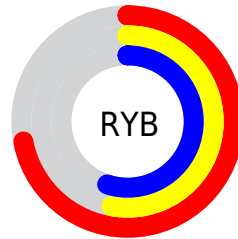
Distribution



Red (72%)

Green (53%)

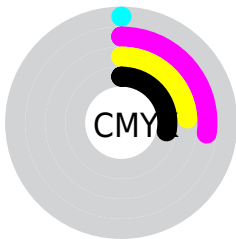
Blue (55%)



Red (72%)

Yellow (53%)

Blue (55%)

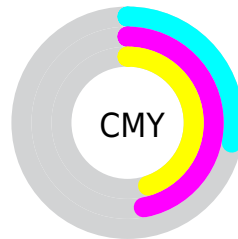


Cyan (0%)

Magenta (27%)

Yellow (24%)

Black (28%)



Cyan (28%)

Magenta (47%)

Yellow (45%)


Brightness & Saturation Gradients

These gradients show how the RYB color 184, 134, 139 changes by changing the brightness by 10 percent. The first figure shows a shift by +10% for each color and the second figure -10%.

Similar to the brightness gradients but the following saturation gradients show a change of the RYB color 184, 134, 139 by changing the saturation by 10% instead.

 184, 134, 139

255, 255, 255

 241, 187, 192

 255, 215, 220

 255, 244, 249

 184, 134, 139

 157, 108, 114

 130, 84, 89


 104, 60, 66


 79, 38, 44


 55, 16, 23


 36, 0, 0

 0, 0, 0

 184, 134, 139

 184, 116, 122

 184, 134, 139

 184, 152, 156

■ 184, 97, 106

■ 184, 171, 172

■ 184, 79, 89

■ 184, 187, 189

■ 184, 60, 73

■ 184, 197, 208

■ 184, 42, 56

■ 184, 206, 226

■ 184, 24, 40

■ 184, 216, 244

■ 184, 5, 23

■ 184, 220, 255

■ 184, 0, 18

Harmonies

Analogous

The Analogous color harmony consists of three colors that are next to each other on the color wheel.



177, 135, 157



184, 134, 139



181, 141, 123

Triad

The Triadic color harmony groups three colors that are evenly spaced from another and form a triangle on the color wheel.



184, 134, 139



120, 153, 142



113, 137, 181

Complementary

The Complementary color scheme is a pair of colors which are on the opposite of each other on the color wheel.



184, 134, 139



134, 160, 184

Split Complementary

Split-complementary colors differ from the complementary color scheme. The scheme consists of three colors, the original color and two neighbors of the complement color.



97, 130, 171



184, 134, 139



111, 140, 156

Square

The Square scheme is like the rectangle color scheme, but the four colors are evenly spaced on the color wheel.



184, 134, 139



116, 152, 112



98, 128, 157



137, 145, 182

Rectangle

The Rectangle color scheme consists of four colors that form a rectangle on the color wheel.



184, 134, 139



174, 158, 115



98, 128, 157



106, 135, 179

Sweetspot

The Sweet Spot groups the original color and five complimentary colors.



184, 134, 139



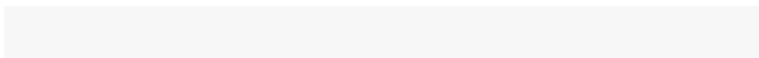
240, 221, 222



179, 134, 184



120, 108, 109



247, 247, 247



120, 120, 120

Same Dimension

The Same Dimension uses a secret algorithm to generate beautiful new colors.



184, 134, 139



240, 161, 169



184, 167, 134



92, 83, 84



156, 0, 16



28, 0, 3

Inverse Universe

The Inverse Universe completely reimagines the original color for something new.



184, 134, 139



240, 161, 169



134, 153, 184



92, 83, 84



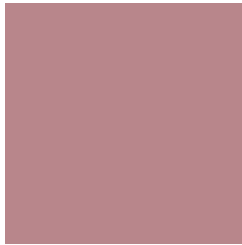
156, 0, 16



28, 0, 3

Previews

White Background



This preview shows how the RYB color 184, 134, 139 looks on a white background.

Color Contrast Check

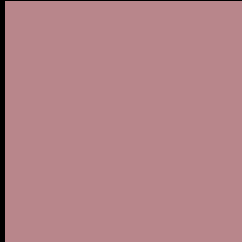
Large Text (above 18pt) WCAG AA ✓ Pass

Any Text WCAG AA × Fail

Large Text (above 18pt) WCAG AAA × Fail

Any Text WCAG AAA × Fail

Black Background



This preview shows how the RYB color 184, 134, 139 looks on a black background.

Color Contrast Check

Large Text (above 18pt) WCAG AA ✓ Pass

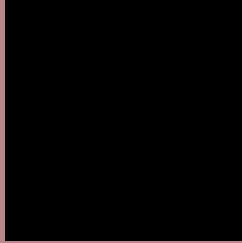
Any Text WCAG AA ✓ Pass

Large Text (above 18pt) WCAG AAA ✓ Pass

Any Text WCAG AAA × Fail

If you want to check with other color combinations, try the [Color Contrast Checker](#).

RYB 184, 134, 139 Background



This preview shows how black text looks on a background with the RYB color 184, 134, 139.



This preview shows how white text looks on a background with the RYB color 184, 134, 139.

Color Blindness Simulation

Color vision deficiency is a very complex topic, and I could not describe the different causes any better than Wikipedia does, so if you want to learn more, you should check out their [article about color blindness](#).


Dichromacy



Original Color
184, 134, 139

Protanopia
150, 146, 146

Deuteranopia
165, 143, 138



Tritanopia

184, 133, 144

Trichromacy



Original Color

184, 134, 139

Protanomaly

162, 142, 143

Deuteranomaly

172, 139, 138

Tritanomaly

184, 133, 142

Monochromacy



Original Color

184, 134, 139

Achromatopsia

150, 150, 150

Achromatomaly

162, 144, 146

CSS Examples

Text

The CSS property to change the color of the text to RYB 184, 134, 139 is called "color". The color property can be set on classes, ids or directly on the HTML element.

This example shows how text in the color rgb(184, 134, 139) looks like.

```
.text, #text, p{  
    color:rgb(184, 134, 139)  
}
```

If you want to add a text shadow in that color use the text-shadow property, you can generate a text shadow directly with our [CSS Text Shadow Generator](#).

Here you see how black text with a 4 pixel rgb(184, 134, 139) colored shadow looks like.

```
.shadow{ text-shadow: 4px 4px 2px rgb(184, 134, 139) }
```

Border

The CSS property to change the border of an element to RYB 184, 134, 139 is called "border". The border property can be set on classes, ids or directly on the HTML element.

This example shows the color as border, it can be applied via the CSS property "border" or "border-color".

```
.border, #border, table{ border:4px solid rgb(184, 134, 139) }
```

If only the border color should be changed use the property `border-color`.

```
.border{ border-color:rgb(184, 134, 139) }
```

If you want to add a box shadow in that color use:

Here you see how a box with a 4 pixel `rgb(184, 134, 139)` colored shadow looks like.

```
.boxshadow{ -moz-box-shadow:4px 4px 4px  
4px rgb(184, 134, 139); -webkit-box-  
shadow:4px 4px 4px 4px rgb(184, 134, 139);  
box-shadow:4px 4px 4px 4px rgb(184, 134,  
139) }
```

Background

The CSS property to change the background color of an element to RYB 184, 134, 139 is called "background". The background property can be set on classes, ids or directly on the HTML element.

```
.background, #background, body{  
background: rgb(184, 134, 139) }
```

If only the background color should be changed can be used:

```
.background{ background-color: rgb(184,  
134, 139) }
```

This example shows the color as background, it is applied via the CSS property "background".

To optimize and compress your CSS code, you can use our [online CSS compressor and optimizer](#) based on csstidy. If you want to create a linear or radial gradient as background or border, check our [CSS Gradient Generator](#).

Hey! You found this booklet interesting? Support Converting Colors with the new Membership Option!

The pro membership hides all ads, plus gives you double the colors in the color bucket, and more awesome pro features!

[Learn more, Memberships starting at \\$2.50/m!](#)

**Follow me
on Twitter!**

@ConvertingColor