

Converting Colors

`RYB(184, 148, 148)`

Have a look what the booklet for
RYB(184, 148, 148) contains.

RYB(184, 148, 148)	3
<i>Conversions</i>	4
<i>Details</i>	6
<i>Harmonies</i>	11
<i>Previews</i>	23
<i>Color Blindness Simulation</i>	26
<i>CSS Examples</i>	29

Color

R_YB(184, 148, 148)

Conversions

Conversions Part 1

Format	Color
Hex	B89494
RGB	184, 148, 148
RGB Percent	72%, 58%, 58%
CMY	0.2784, 0.4196, 0.4196
CMYK	0.00, 0.20, 0.20, 0.28
HSL	0°, 20%, 65%
HSV	0°, 20%, 72%
XYZ	35.7024, 33.5083, 32.6030
YIQ	158.7640, 21.4560, 7.6320

Conversions

Conversions Part 2

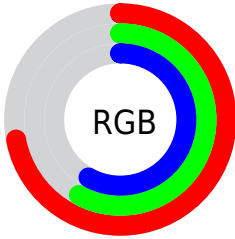
Format	Color
RYB	184, 148, 148
Decimal	12096660
CIELab	64.57, 13.48, 5.11
CIElCh	65, 14.415, 20.773
Yxy	33.5083, 0.3507, 0.3291
Android (android.graphics.Color)	4290286740 (0xFFB89494)
YUV	158.7640, -5.3067, 22.1320
Hunter-Lab	57.8863, 8.7918, 7.1269

Details

The RYB color **184, 148, 148** is a light color, and the websafe version is hex **CC9999**. A complement of this color would be **148, 166, 184**, and the grayscale version is **159, 159, 159**.

A 20% lighter version of the original color is **240, 202, 202**, and **130, 97, 97** is the 20% darker color. If you saturate the color by 10%, you get **184, 130, 130**, and if you desaturate by 10%, it is **184, 166, 166**.

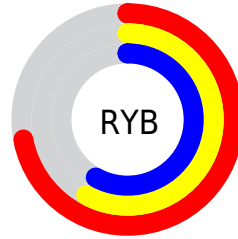
Distribution



Red (72%)

Green (58%)

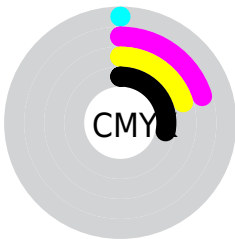
Blue (58%)



Red (72%)

Yellow (58%)

Blue (58%)

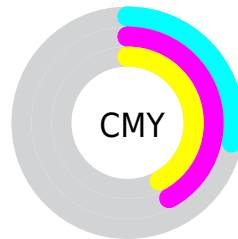


Cyan (0%)

Magenta (20%)

Yellow (20%)

Black (28%)



Cyan (28%)

Magenta (42%)

Yellow (42%)

Brightness & Saturation Gradients

These gradients show how the RYB color 184, 148, 148 changes by changing the brightness by 10 percent. The first figure shows a shift by +10% for each color and the second figure -10%.


Similar to the brightness gradients but the following saturation gradients show a change of the RYB color 184, 148, 148 by changing the saturation by 10% instead.


 184, 148, 148

255, 255, 255


 240, 202, 202

 255, 230, 230

 184, 148, 148

 157, 122, 122

 130, 97, 97


 105, 73, 74


 80, 51, 51


 56, 29, 30


 36, 6, 5


 0, 0, 0

 184, 148, 148

 184, 130, 130


 184, 148, 148

 184, 166, 166

 184, 111, 111

 184, 185, 185

 184, 93, 93

 184, 194, 203

 184, 74, 74

 184, 203, 222

 184, 56, 56

 184, 212, 240

 184, 38, 38

 184, 220, 255

 184, 19, 19

 184, 1, 1

 184, 0, 0

Harmonies

Analogous

The Analogous color harmony consists of three colors that are next to each other on the color wheel.



180, 148, 161



184, 148, 148



180, 156, 137

Triad

The Triadic color harmony groups three colors that are evenly spaced from another and form a triangle on the color wheel.



184, 148, 148



140, 162, 160



138, 152, 182

Complementary

The Complementary color scheme is a pair of colors which are on the opposite of each other on the color wheel.



184, 148, 148



148, 166, 184

Split Complementary

Split-complementary colors differ from the complementary color scheme. The scheme consists of three colors, the original color and two neighbors of the complement color.



126, 147, 176



184, 148, 148



130, 151, 164

Square

The Square scheme is like the rectangle color scheme, but the four colors are evenly spaced on the color wheel.



184, 148, 148



132, 159, 134



123, 144, 165



154, 155, 181

Rectangle

The Rectangle color scheme consists of four colors that form a rectangle on the color wheel.



184, 148, 148



175, 171, 133



123, 144, 165



133, 150, 180

Sweetspot

The Sweet Spot groups the original color and five complimentary colors.



184, 148, 148



240, 225, 225



184, 148, 184



120, 111, 111



247, 247, 247



120, 120, 120

Same Dimension

The Same Dimension uses a secret algorithm to generate beautiful new colors.



184, 148, 148



240, 185, 185



184, 184, 148



92, 83, 83



156, 0, 0



28, 0, 0

Inverse Universe

The Inverse Universe completely reimagines the original color for something new.



148, 166, 184



185, 213, 240



148, 160, 184



83, 88, 92



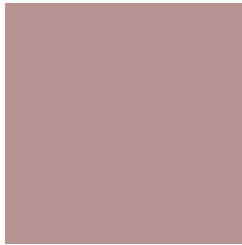
0, 78, 156



0, 14, 28

Previews

White Background



This preview shows how the RYB color 184, 148, 148 looks on a white background.

Color Contrast Check

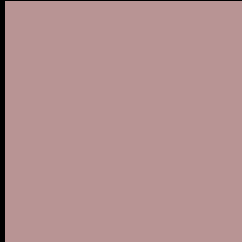
Large Text (above 18pt) WCAG AA × Fail

Any Text WCAG AA × Fail

Large Text (above 18pt) WCAG AAA × Fail

Any Text WCAG AAA × Fail

Black Background



This preview shows how the RYB color 184, 148, 148 looks on a black background.

Color Contrast Check

Large Text (above 18pt) WCAG AA ✓ Pass

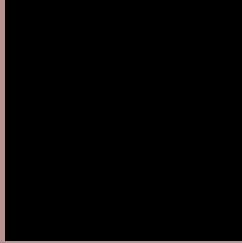
Any Text WCAG AA ✓ Pass

Large Text (above 18pt) WCAG AAA ✓ Pass

Any Text WCAG AAA ✓ Pass

If you want to check with other color combinations, try the [Color Contrast Checker](#).

R_YB 184, 148, 148 Background



This preview shows how black text looks on a background with the R_YB color 184, 148, 148.



This preview shows how white text looks on a background with the R_YB color 184, 148, 148.

Color Blindness Simulation

Color vision deficiency is a very complex topic, and I could not describe the different causes any better than Wikipedia does, so if you want to learn more, you should check out their [article about color blindness](#).

Dichromacy



Original Color

184, 148, 148

Protanopia

161, 159, 152

Deuteranopia

175, 152, 147



Tritanopia
185, 146, 158

Trichromacy



Original Color

184, 148, 148

Protanomaly

169, 153, 151

Deuteranomaly

178, 150, 147

Tritanomaly

185, 147, 154

Monochromacy



Original Color

184, 148, 148

Achromatopsia

159, 159, 159

Achromatomaly

168, 155, 155

CSS Examples

Text

The CSS property to change the color of the text to RYB 184, 148, 148 is called "color". The color property can be set on classes, ids or directly on the HTML element.

This example shows how text in the color `rgb(184, 148, 148)` looks like.

```
.text, #text, p{  
    color:rgb(184, 148, 148)  
}
```

If you want to add a text shadow in that color use the text-shadow property, you can generate a text shadow directly with our [CSS Text Shadow Generator](#).

Here you see how black text with a 4 pixel rgb(184, 148, 148) colored shadow looks like.

```
.shadow{ text-shadow: 4px 4px 2px rgb(184, 148, 148) }
```

Border

The CSS property to change the border of an element to RYB 184, 148, 148 is called "border". The border property can be set on classes, ids or directly on the HTML element.

This example shows the color as border, it can be applied via the CSS property "border" or "border-color".

```
.border, #border, table{ border:4px solid rgb(184, 148, 148) }
```

If only the border color should be changed use the property `border-color`.

```
.border{ border-color:rgb(184, 148, 148) }
```

If you want to add a box shadow in that color use:

Here you see how a box with a 4 pixel `rgb(184, 148, 148)` colored shadow looks like.

```
.boxshadow{ -moz-box-shadow:4px 4px 4px  
4px rgb(184, 148, 148); -webkit-box-  
shadow:4px 4px 4px 4px rgb(184, 148, 148);  
box-shadow:4px 4px 4px 4px rgb(184, 148,  
148) }
```

Background

The CSS property to change the background color of an element to RYB 184, 148, 148 is called "background". The background property can be set on classes, ids or directly on the HTML element.

```
.background, #background, body{  
background: rgb(184, 148, 148) }
```

If only the background color should be changed can be used:

```
.background{ background-color: rgb(184,  
148, 148) }
```

This example shows the color as background, it is applied via the CSS property "background".

To optimize and compress your CSS code, you can use our [online CSS compressor and optimizer](#) based on csstidy. If you want to create a linear or radial gradient as background or border, check our [CSS Gradient Generator](#).

Hey! You found this booklet interesting? Support Converting Colors with the new Membership Option!

The pro membership hides all ads, plus gives you double the colors in the color bucket, and more awesome pro features!

[Learn more, Memberships starting at \\$2.50/m!](#)

**Follow me
on Twitter!**

@ConvertingColor